

Thank you for choosing the USI/SM/HWREP and USI/SM/HWREP/3 photoelectric smoke alarm. This reliable and efficient alarm is designed to protect your home and family. Powered by 120V AC with a 9V battery backup, it provides continuous monitoring, even during power outages. As an interconnection compatible alarm, it can be connected to other units for a comprehensive home safety system. This environmentally friendly does not contain radioactive material, alarm minimizes false alarms, and ensuring peace of mind.

THIS EQUIPMENT SHOULD BE INSTALLED IN ACCORDANCE WITH THE NATIONAL FIRE PROTECTION ASSOCIATION'S STANDARD 72 (National Fire Protection Association, Battery march Park, Quincy, MA 02269).

Typical installation drawing layouts for the unit(s), indicating recommended locations and wiring methods, which shall be in accordance with the applicable requirements outlined in the following:

1. National Electrical Code, NFPA 70, Wiring Methods and Materials;
2. National Fire Alarm and Signaling Code, NFPA 72, Single and Multiple-Station Alarms and Household Fire Alarm Systems for US requirement.

The National Fire Protection Association (NFPA) and the manufacturer recommend replacing this alarm ten years from the date code on back of alarm. Beyond which the device might no longer detect smoke accurately and should be immediately replaced. This instruction manual contains important information on starting operation and using the device.

**ATTENTION!** Please take a few minutes to thoroughly read the instruction manual and familiarize yourself and your family with its operation. And save it for future reference.

**Supplier's Declaration of Conformity:**  
47 CFR § 2.1077 Compliance Information  
**Responsible Party:** Feit Electric Company, Inc.  
4901 Gregg Road, Pico Rivera, CA 90660, USA  
www.feit.com  
**Unique Identifier:** USI/SM/HWREP and USI/SM/HWREP/3

Images are representative only. Actual product may vary slightly.

Table of Contents
1. Smoke Alarm: Steps To Take When The Alarm Sounds
2. Product Safety Information
3. Product Features and Specifications
4. Where to Install Smoke Alarms
5. Installation Locations To Avoid
6. Installation Instructions
7. Replaceable Battery
8. Alarm Operation And Testing
9. Alarm Visual and Audible Indicators
10. Troubleshooting
11. Good Safety Habits: Develop An Escape Plan
12. How to Identify Nuisance Alarms
13. Maintenance Information
14. Special Compliance Considerations
15. Warranty Information

## 1. Smoke Alarm: Steps To Take When The Alarm Sounds

Smoke alarm pattern is three long beeps, a 1.5 second pause, and three long beeps repeating. The red LED blinks in time with the alarm pattern only on the alarm(s) that detected the hazard (initiating alarm).

**What to Do in Case of a Fire**  
**Stay Calm:** Don't panic. Take a deep breath and stay as calm as possible.  
**Exit Quickly:** Leave the house right away. Before opening any door, carefully touch it to see if it's hot. If it is, use another exit. Crawl low to the ground to avoid smoke and don't stop to grab anything.  
**Meet Outside:** Go to a pre-arranged meeting spot outside where everyone knows to gather.  
**Call for Help:** Once you're outside, call the fire department or 911.  
**Stay Out:** Never go back into a burning house. Wait for the fire department to arrive and help.

**NOTE:** These guidelines will assist you in the event of a fire, however, to reduce the chance that fires will start, practice fire safety rules, and prevent hazardous situations.

## 2. Product Safety Information

**DANGER! ELECTRICAL SHOCK HAZARD.** Turn off the power to the circuit before wiring the alarm. Failure to turn off the power first may result in serious electrical shock, injury or death.

**WARNING! PLEASE READ CAREFULLY AND THOROUGHLY.**

- This unit will not alert hearing-impaired residents. It is recommended that you install special units that use devices like flashing strobe lights to alert hearing-impaired residents.
- There are situations where a smoke alarm may not be effective to protect against fire as stated in the NFPA Standard 72. For instance:
  - Fires where the victim is intimate with a flaming-initiated fire; for example, when a person's clothes catch fire while cooking;
  - Fires where the smoke is prevented from reaching the smoke alarm due to a closed door or other obstruction;
  - Incendiary fires where the fire grows so rapidly that an occupants egress is blocked even with properly located smoke alarms.
- Smoke alarms are not to be used with smoke alarm guards unless the combination has been evaluated and found suitable for that purpose.
- This unit must be powered by a 24-hour, 120-volt, pure sine wave, 60 Hz circuit. Be sure the circuit cannot be turned off by a switch, dimmer, or ground fault circuit interrupter. Failure to connect this unit to a 24-hour circuit may prevent it from providing constant protection.
- This smoke alarm must have AC or battery power to operate. If the AC power fails, battery backup will allow the alarm to sound for at least 4 minutes. If AC power fails and the battery is weak, protection should last for up to 7 days. If AC power fails and the battery is missing, the alarm cannot operate.
- Never disconnect the power from an AC-powered unit to stop an unwanted alarm. Doing so will disable the unit and remove your protection. In the case of a true unwanted alarm, open a window or fan the smoke away from the unit. The alarm will reset automatically when it returns to normal operation. Never remove the batteries from a battery operated unit to stop an unwanted alarm (caused by cooking smoke, etc.). Instead open a window or fan the smoke away from the unit. The alarm will reset automatically.
- This Smoke alarm will not protect against the risk of smoke when the battery has been drained with AC power disconnected.
- This device should be installed by a competent person.

- The test button accurately tests the device's functions. Do not use any other test method. Test the device weekly to ensure proper operation.
- If you're sure it isn't a real alarm warning, open windows or fan the air around the device to silence it.
- Observe and follow all location and national electrical and building codes for installation.
- This smoke alarm is designed to be used within a single family only. In multifamily buildings, each individual living unit should have its own smoke alarm device. Do not install it in non-residential buildings. It is not designed for use in a recreational vehicle (RV) or boat. And the device is not a substitute for a complete alarm system.
- This smoke alarm can only sound its alarm when it detects a dangerous level of smoke in the air. The device is designed to give audible warning of dangerous smoke.

Smoke alarms have played a key role in reducing deaths resulting from home fires worldwide. However, like any warning device, Smoke alarms can only work if they are properly located, installed, and maintained, and if smoke reaches the Alarms. **They are not foolproof.**

**Smoke alarms may not waken all individuals.**  
Current studies have shown smoke alarms may not awaken all sleeping individuals, and that

it is the responsibility of individuals in the household that are capable of assisting other to provide assistance to those who may not be awakened by the alarm sound, or to those who may be incapable of safely evacuating the area unassisted. Practice the escape plan at least twice a year, making sure that everyone is involved – from kids to grandparents. Allow children to master fire escape planning and practice before holding a fire drill at night when they are sleeping. If children or others do not readily waken to the sound of the smoke alarm, or if there are infants or family members with mobility limitations, make sure that someone is assigned to assist them in fire drill and in the event of an emergency. It is recommended that you hold a fire drill while family members are sleeping in order to determine their response to the sound of the smoke alarm while sleeping and to determine whether they may need assistance in the event of an emergency.

**Smoke alarms cannot work without power.**  
Battery operated units cannot work if the batteries are missing, disconnected or dead, if the wrong type of batteries are used, or if the batteries are not installed correctly. AC units cannot work if the AC power is cut off for any reason (open fuse or circuit breaker, failure along a power line or at a power station, electrical fire that burns the electrical wires, etc.). If you are concerned about the limitations of battery or AC power, install both types of units.

**Smoke alarms cannot detect fires if the smoke does not reach them.**  
Smoke from fires in chimneys or walls, on roofs, or on the other side of closed doors may not reach the sensing chamber and set off the alarm. That is why one unit should be installed inside each bedroom or sleeping area—especially if bedroom or sleeping area doors are closed at night—and in the hallway between them.

**Smoke alarms may not detect fire on another floor or area of the dwelling.**  
For example, a stand-alone unit on the second floor may not detect smoke from a basement fire until the fire spreads. This may not give you enough time to escape safely. That is why the recommended minimum protection is at least one unit in every sleeping area and every bedroom on every level of your dwelling. Even with a unit on every floor, stand-alone units may not provide as much protection as interconnected units, especially if the fire starts in a remote area. Some safety experts recommend installing interconnected AC-powered units with batteries. Backup or professional fire detection systems, so if one unit senses smoke, all units alarm. Interconnected units may provide an earlier warning than stand-alone units, since all units alarm when one detects smoke.

**Smoke alarms may not be heard.**  
Though the alarm horn in this unit meets or exceeds current standards, it may not be heard if:

- 1) the unit is located outside a closed or partially closed door, 2) residents recently consumed alcohol or drugs, 3) the Alarm is drowned out by noise from the stereo, TV, traffic, air conditioner or other appliances, and 4) residents are hearing impaired or sound sleepers. Special-purpose Units, like those with visual and audible alarms, should be installed for the hearing-impaired residents. Smoke alarms may not have time to sound before the fire itself causes damage, injury, or death since smoke from some fires may not reach the unit immediately. Examples of this include people smoking in bed, children playing with matches, or fires caused by violent explosions resulting from escaping gas.

**Smoke alarms are not foolproof.**  
Like any electronic device, Smoke alarms are made of components that can wear out or fail at any time. You must test the unit weekly to ensure your continued protection. Smoke alarms cannot prevent or extinguish fires. They are not a substitute for property or life insurance. Smoke alarms have a limited life. The unit should be replaced immediately if it is not operating properly. In addition, it is possible for the device to fail at any time. For this reason, you must test the device weekly and replace it every 10 years.

## 3. Product Features and Specifications

**Model:** USI/SM/HWREP & USI/SM/HWREP/3  
**Model Type:** Multi-station photoelectric smoke alarm  
**Product Standards:** Conf. to UL STD 217  
**Power Supply:** 120VAC/60Hz, 70mA Max, 9V battery backup (GP1604S /EVEREADY 1222, Replaceable)  
**Hardware Interconnection:** Up to 12 Alarms  
**Product Lifetime:** 10 years  
**Indicator Light:** Red and Green LED  
**Smoke Alarm Silence:** About 8 minutes  
**Alarm Mode:** Sound and light signal  
**Audible Alarm:** ≥ 85dB at ~10 FT  
**Flame Retardant Rating:** V0,5VA  
**Installation Location:** Ceiling or wall  
**Temperature Operating Range:** 40°F (4.4°C) to 100°F (37.8°C)  
**Humidity Operating range:** 10-95% RH non-condensing  
**Size:** 5.66x1.49 inches (144x38 mm)  
**Weight:** About 240g ( battery included )

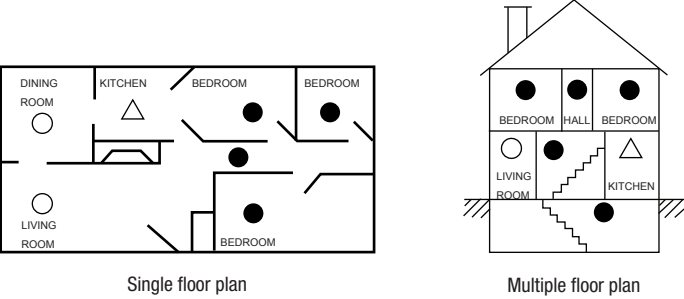
## 4. Where to Install Smoke Alarms

**CAUTION!!** Do not connect it to any other type of alarm or auxiliary device. Connecting anything else to this unit may damage it or prevent it from operating properly.

**CAUTION!!** The battery compartment door can not be closed unless a battery is installed.

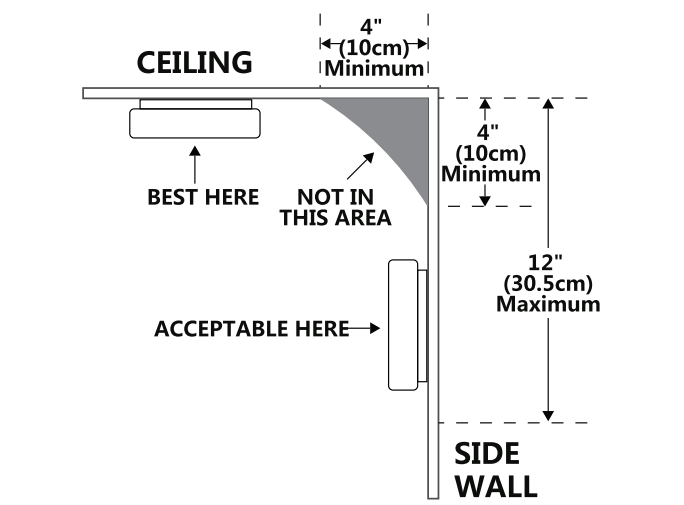
**CAUTION!!** Do not paint over the unit. Paint may seal the openings to the sensing chamber and prevent the unit from operating properly.

The following suggestions are intended to help you with the location and installation of your smoke alarm.



- Smoke alarms for required protection
- Smoke alarms for additional protection
- Smoke alarms with silence control for additional protection

- In all sleeping rooms and guest rooms.
- Outside each separate dwelling unit sleeping area, within 21 feet (6.4 m) of any door to asleeping room, the distance measured along a path of travel.
- On every level of a dwelling unit, including basements.
- On every level of a residential board and care occupancy (small facility), including basements, excluding crawl spaces and unfinished attics.
- In the living area(s) of a guest suite.
- In the living area(s) of a residential board and care occupancy.
- Smoke, heat, and combustion products rise to the ceiling and spread horizontally. Mounting the smoke alarm on the ceiling in the center of the room places it closest to all points in the room. Ceiling mounting is preferred in ordinary residential construction.
- When mounting a device on the ceiling, locate it at a minimum of 4 inches (10 cm) from the side wall.
- When mounting the device on the wall, use an inside wall, with the top edge of the alarm at a minimum of 4 inches (10 cm) and a maximum of 12 inch (30.5cm) below the ceiling.
- Put the device at both ends of a bedroom hallway or large room, if the hallway or room is more than 30 feet (9.1 m) long.
- Install the device on a sloped, peaked or cathedral ceilings at or within 3 feet (0.9 m) of the highest point (measured horizontally).

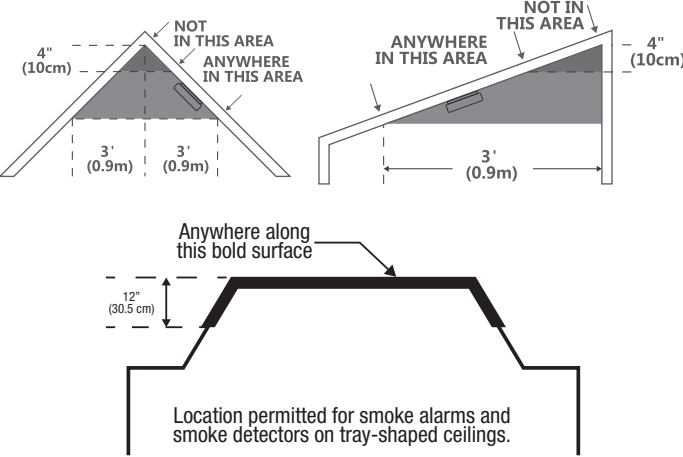


**Mobile Home Installation**  
Modern mobile homes are built to be energy efficient. Follow the standard smoke alarm installation recommendations. However, in older mobile homes with less insulation, extreme heat or cold from the outside can transfer through poorly insulated walls and roofs. This may create a thermal barrier that prevents smoke from reaching a ceiling-mounted alarm. In such cases, install the smoke alarm on an interior wall with the top edge of the alarm no more than 12" (30.5 cm) below the ceiling. If you're unsure about the insulation quality of your mobile home or notice that the exterior walls and ceiling feel hotter or colder than the room air, place the alarm on an interior wall. NFPA 72 (National Fire Protection Association) requires smoke alarms to be installed in each sleeping area.

## 5. Installation Locations To Avoid

To ensure the Smoke Alarm work properly and provide detection performance, do not install the device in the following places:

1. Normal cooking may cause nuisance alarms. If a kitchen alarm is desired, it should have an alarm silence feature and should not be installed within 6 feet of cooking appliances.
2. Do not install within 6 feet of heating appliances.
3. In areas with high humidity, like bathrooms or areas near dishwashers or washing machines or directly above a sink. Install at least 10 feet away from these areas.
4. Avoid spraying aerosols near the device.
5. Next to a door or window, an extractor fan, air returns or heating and cooling supply vents. The air could blow smoke away from the device, interrupting its alarm.
6. In rooms where temperatures may fall below 4.4°C or rise above 37.8°C, or in humidity higher than 95%. These conditions will reduce battery life or cause a fault alarm.
7. In extremely dusty, dirty, or insect infested areas influence particles interfere with the device operation.
8. In the garage. Products of combustion are present when you start your automobile.
9. In an enclosed space (for example in a cupboard or behind a curtain).
10. Where it can be obstructed (for example by furniture).
11. Less than 4" (10cm) from the peak of an "A" frame type ceiling.
12. Near fluorescent lights. Electronic noise may cause nuisance alarms.
13. Avoid installing where the unit will be exposed to direct sunlight.
14. Place out of the reach of children. Under no circumstance should children be allowed to handle the device.



## 6. Installation Instructions

**IMPORTANT!** This alarm is designed to be mounted on a UL Listed or recognized junction box, on either the ceiling or wall (if allowed by local codes). Read "Where to Install Smoke Alarms" and "Installation Locations To Avoid" before you begin installation. **Tools you will need:** needle-nose pliers or utility knife, standard flathead screwdriver, wire strippers (for interconnected Alarms)

**Note:** A dust cover has been placed on the alarm. Keep the dust cover in place until all construction activities (such as drywall work, painting, varnishing, or installing the mounting plate) have been completed for at least 24 hours. Save the dust cover and use it again to protect the alarm during any future construction projects. Construction dust and chemicals can cause contamination and trigger false alarms

**Wiring Requirements**

- This alarm should be installed on a UL-listed or recognized junction box. All connections should be made by a qualified electrician, and the electrical wiring used shall be in accordance with Articles 210 and 300.3(B) of the U.S. National Electrical Code (ANSI/NFPA 70, NFPA 72). And/or any other codes having jurisdiction in your area. The multiple-station interconnect wiring to the alarms must be run on the same raceway or cable as the AC power wiring.
- In addition, the resistance of the interconnect wiring shall be a maximum of 10 ohms.
- The appropriate power source is 120 Volt AC single phase supplied from a non-switchable circuit.
- Smoke alarms are not to be used with detector guards unless the combination (alarm and detector guard) has been evaluated and found suitable for that purpose.
- To reduce the likelihood of nuisance alarm of the device, the accommodation spaces should be well-ventilated when household cleaning supplies or similar contaminants are used.
- The alarm was not designed, agency tested or certified for recessed mounting and should not be installed in this manner. Recessed mounting impedes smoke entry into the smoke chamber, which may prevent the alarm from sounding in a timely manner. This could endanger the lives of occupants in the residence. The alarm was designed, tested and certified for wall (if applicable) and ceiling surface mount only.

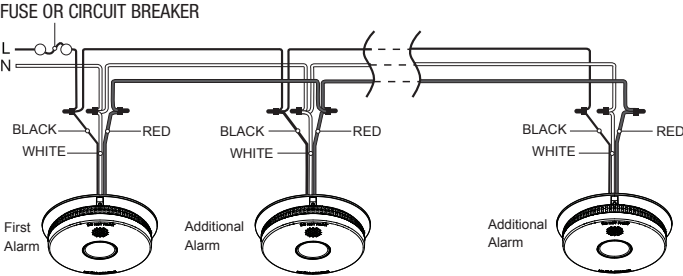
**WARNING!** The alarm cannot be operated with power derived from a square wave or modified square wave. Wave, or modified sine wave, inverter. These types of inverters are sometimes used to supply power to the structure in off-grid installations, such as solar or wind-derived power sources. These power sources produce high peak voltages that will damage the alarm.

## Wiring instructions for AC quick Connector Hamess

**CAUTION!!** Turn off the main power to the circuit before wiring the alarm.

**DANGER! ELECTRICAL SHOCK HAZARD.** Turn off the power to the circuit before wiring the alarm. Failure to turn off the power first may result in serious electrical shock, injury or death. Improper wiring of the power connector or the wiring leading to the power connector will cause damage to the Alarm and may lead to a non-functioning alarm.

- For alarms that are used as single stations, do not connect the red wire to anything. Leave the red wire insulating cap in place to make certain that the red wire cannot contact any metal parts or the electrical box.
- The wire colors are:
  - Black = Live
  - White = Neutral
  - Red = Interconnect
- Make certain alarms are wired to a continuous (non-switched) power line.



**NOTE:** Use standard UL Listed household wire (as required by local codes) available at all electrical supply stores and most hardware stores.

**CAUTION!!** Improper wiring of the power connector or the wiring leading to the power connector will cause damage to the Alarm and may lead to a non-functioning Alarm. All power connections should be done using wire-nuts.

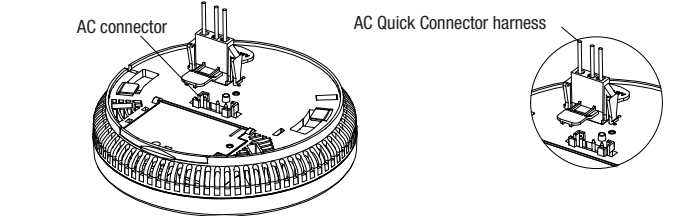
- Turn off the power to the circuit before wiring the alarm.
- Remove the mounting bracket from the base and attach it to the junction box.
- Using wire nuts, connect the AC QUICK Connector harness to the household wiring.
- Insert the batteries into the compartment.
- Plug the AC QUICK CONNECTOR into the back of the unit, making sure that the locks on the connector snap into place.
- Check all connections. Then push the excess wire back into the electrical box through the hole in the center of the mounting bracket.
- Rotate the alarm in the counterclockwise direction and install the alarm completely on the mounting bracket.
- Turn on the power. The green LED will turn on when the alarm is operating from AC power.
- If the green power indicator light does not light, turn off power to the junction box and recheck all connections. If all connections are correct and the green power indicator still does not light when you restore the power, the unit should be replaced immediately.



- STAND-ALONE ALARM ONLY:**
  - If you are only installing one Smoke Alarm, restore power to the junction box.

**INTERCONNECTED UNITS ONLY:**
  - If you are interconnecting multiple Smoke alarms, repeat steps 1–9 for each Smoke Alarm in the series. When you are finished, restore power to the junction box.

10. **Single station alarms:** Test each smoke alarm. Press and hold the test button until the unit alarms.
- Interconnected alarms:** Press and hold the Test/Silence button until the unit alarms. All interconnected Alarms should sound. The other Alarms sounding only tests the interconnect signal among alarms. It does not test each alarm’s operation. You must test each alarm individually to check if the alarm works properly. If any unit in the series does not alarm, turn off power and recheck connections. If it does not alarm when you restore power, replace it.
11. For new construction, place supplied dust cover over alarm to prevent damage from dust and construction debris. Construction dust and chemical scan cause contamination and false alarms When construction is complete, remove dust cover.



**AC Wired Interconnect Model Capability**  
This model has AC hardwire interconnect capability. When one hardwired interconnect unit sounds an alarm, all other compatible hardware or interconnected units will also alarm.

**NOTE:** AC wiring must be completed properly, and the AC quick connector must be attached to the unit for the hard wire interconnect function to work.

Interconnected units can provide earlier warning of fire than stand-alone units, especially if a fire starts in a remote area of the dwelling. If any unit in the series senses smoke, all units will Alarm. To determine which Alarm initiated an Alarm, the red LED blinks in time with alarm pattern indicating that this is the unit initiating the alarm in an interconnected multiple alarm, system.

**NOTE:** It is possible for more than one unit to detect a hazard and become an initiating alarm unit.

- INTERCONNECTED UNITS MUST MEET ALL OF THE FOLLOWING REQUIREMENTS:**
- All interconnected alarms must be supplied from a single power circuit.
  - Do not connect Interconnect wires to a line or neutral connection. An improper connection will result in damage to the alarm, failure to operate, or a shock hazard. Check the connections carefully before turning them on the main power to the circuit. Interconnect Wiring Diagram: See Diagram 4.
  - A maximum of 12 smoke alarms may be interconnected in a multiple-station arrangement.
  - The maximum wire run distance between the first and last unit in an interconnected system is 1000 feet.
  - All wiring must conform to all local electrical codes and NFPA 70 (NEC). Refer to NFPA 72, NFPA 101, and/or your local building code for further connection requirements.

- Mounting Instructions:**
- Hold the bracket against the wall in the desired location and use a pencil to mark the positions for the screw holes.
  - Drill holes at the marked points and insert the provided plastic anchors.
  - Align the bracket with the plugs and secure it by tightening the provided screws.
  - Insert the battery into the battery compartment.
  - Mount the alarm onto the bracket.
  - Press the TEST/SILENCE button to test the device.

**WARNING!** Make sure the alarm is not receiving excessively noisy power. Examples of noisy power could be major appliances on the same circuit, power from a generator or solar power, light dimmer on the same circuit or mounted near fluorescent lighting. Excessively noisy power may cause damage to your alarm.

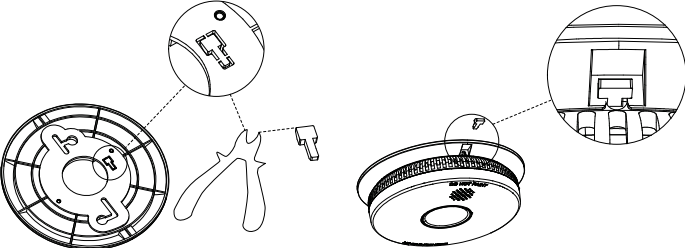
**WARNING!** This device should be located in an open and unobstructed area and shall not be located behind furniture, drapes, or any other object where it might not be seen or heard. The alarm will be heard from all sleeping areas. If you install only one device in your home, install it near bedrooms, not in the basement or furnace room.

**CAUTION!!** This device should be installed by a competent person.



**Optional locking feature**  
The locking feature is designed to discourage unauthorized removal of the Alarm. It is not necessary to activate the locks in single-family households where unauthorized battery or Alarm removal is not a concern.

**Tools you will need:** Needle-nose pliers or utility knife.  
The locking feature uses locking pins, which are molded into the mounting bracket. Using needle-nose pliers or a utility knife, remove one pins from the mounting bracket.



- To Lock the Alarm onto the Mounting Bracket:**
- Use needle-nose pliers to detach one locking pin from the mounting bracket.
  - Install the alarm onto the mounting plate by rotating it clockwise until it locks in place.
  - Insert the locking pin into the lock slot on the side of the alarm, ensuring the pin head remains outside the alarm as shown in the diagram.
  - 4.When the alarm is secured to the mounting bracket, the pin head will fit into a notch on the bracket.

- To Unlock the Mounting Bracket:**
- Remove the locking pin from the bracket.
  - Turn the alarm clockwise to release it from the bracket.

## 7. Replaceable Battery

- Replace Battery**
- Remove alarm from mounting bracket and unplug the AC quick connector. Open the battery cover and remove the old battery. (See Diagram 1-2)
  - After you replacing the battery, close the battery cover, then test smoke alarm using TEST/SILENCE button. Plug the AC quick connector and attaches to mounting bracket. (See Diagram 3-4)

**CAUTION!!** Always test the alarm for proper operation using the test function whenever the battery is replaced.

**WARNING!** CONSTANT EXPOSURE TO HIGH OR LOW TEMPERATURES OR HIGH HUMIDITY MAY REDUCE BATTERY LIFE.

**Battery Type**  
This alarm is powered by a 9-volt external battery located in a battery compartment. Under normal conditions, a fresh battery should last at least one year.

**NOTE:** Battery installation or replacement is necessary for the life of the device.

**WARNING!** CONSTANT EXPOSURE TO HIGH OR LOW TEMPERATURES OR HIGH HUMIDITY MAY REDUCE BATTERY LIFE.

**Battery Deactivation**  
This alarm is equipped with a low battery monitor circuit. If the battery capacity is near the point where it can no longer provide adequate power for all alarm functions, the low battery condition will occur. See the "Troubleshooting Guide". The battery must be replaced within 7 days of the first occurrence of the “Low Battery Warning” to provide continuous alarm protection. Follow the battery replacement steps.

Replace battery with one of the following approved brands:  
**9V Carbon zinc Battery:** GP1604S  
EVEREADY 1222

These batteries can be purchased at your local retailer.

**WARNING!** Use only the batteries specified. Use of different batteries may have a detrimental effect on the alarm.

**NOTE:** Do not use lithium batteries in this unit. A good safety measure is to replace the battery at least once a year.  
**Battery Disposal**

**WARNING!** Fire, explosion, and severe bum hazard. Do not recharge, crush disassemble, heat above 100°C, incinerate or expose contents to water.

- Do not dispose of the battery or the device with regular household waste.
- Dispose of the battery and device in accordance with all applicable federal, state, and local regulations.

## 8. Alarm Operation And Testing

**Speaker:** The speaker is used to send out Smoke alarms and abnormal warning information.

**Test/Silence button:** The test button is used to test the device and to silence the unit during a smoke alarm. Press and hold to activate the test function or press briefly to activate the silence function.

**AC power indicator (Green):** The green LED indicates the device's power status. The green indicator light is always on while AC power is ON.

**Alarm indicator (Red):** The red LED lights up to indicate an alarm status for smoke detection.

**End-of-Life Reset**  
When the device enters the end-of-life warning state in the first 30 days, press the TEST/SILENCE button to reset the end-of-life. At this point, if the device is still available. it will enter the normal standby state for 72 hours, after 72 hours, the device will return to the end-of-life warning state. After 30 days of the first end-of-life warning state, the device can no longer be reset and needs to be replaced in a timely manner.



- 1: Speaker
- 2: Test/Silence Button
- 3: AC power indicator (Green)
- 4: Alarm indicator (Red)

## 9. Alarm Visual and Audible Indicators

Operation mode	Visual (flash) And Audible (beep)
Standby	Red LED flashes every 40 seconds
Test Mode	Press the TEST/SILENCE button for 2 seconds once a week to verify proper alarm operation. The red LED will flash in sync with the alarm pattern, which consists of 3 beeps, followed by a pause, and then 3 more beeps. The beeping sound is in gradual mode, and the test alarm rings for two cycles.
Initiating Smoke Alarm (multiple alarms in an interconnected system)	The red LED will flash in sync with the alarm pattern, which consists of 3 beeps, followed by a pause, and then 3 more beeps. Red LED blinks in time with alarm pattern indicating that this is the unit initiating the alarm in an interconnected multiple alarm, system. <b>NOTE:</b> It is possible for more than one unit to detect a hazard and become an initiating alarm unit.
Alarm Memory	<ol style="list-style-type: none"><li>After alarming without any operation in 24 hours, the device will enter alarm memory mode, the red light will flash twice every 8 seconds.Alarm memory is only retained for 24 hours.</li><li>Push test button to clear alarm memory.</li></ol>
Silence Mode	When the smoke alarm occurs, press the button on the initiating unit to enter the silence mode. The LED will flash once approx every 8 seconds without sound. Silence time: Approx 8 minutes.

## 10. Troubleshooting

Operation mode	Visual (flash) And Audible (beep)	Description/Action
Low Battery	Red LED flashes once approx every 40 sec. Chirp once approx every 40 sec. (Simultaneously with red LED flashing). Press test button once to silence mode for approx 10 hours. Silence mode: Red LED flashes once approx every 40 sec.	Replace new battery for your unit as soon as possible.
Smoke Sensor Fault	Red LED flashes once approx every 40 sec. Chirp once approx every 40 sec. (Out of sync with red LED flashing). Press button once to silence mode for approx 10 hours. Silence mode: LED flashes every 40 sec.	Review Cleaning Your Alarm section. Remove and dispose your unit, and replace as soon as possible
End-of-life	Red LED flashes 3 times approx every 40 sec. Chirp 3 times approx every 40 sec. (Simultaneously with red LED flashing)	Remove and dispose your unit, and replace as soon as possible.

## 11. Good Safety Habits: Develop An Escape Plan

Prepare and practice a home escape plan twice a year, including drills at night. Know two ways out of every room(door & window) and identify a meeting place outside the home where everyone will gather once they have exited the residence. When two people have reached the meeting place, one should leave to call the fire department’s telephone number while the second person stay to account for additional family members. Establish a rule that once you’re out, you never reenter under any circumstance!

- Make a floor plan indicating all doors and windows and least two escape routes from each room. Second story windows may need a rope or chain ladder.
- Have a family meeting and discuss your escape plan, showing everyone what to do in case of fire and where to meet after they leave the house.
- Ensure that small children hear the alarm and wake when it sounds. They must wake up on order to execute the escape plan. Practice allows all occupants to test your plan before an emergency. You may not be able to reach your children. It is important they know what to do.
- Familiarize everyone with the sound of the smoke alarm and train them to leave you home when they hear it.
- Current studies have shown smoke alarms may not awaken all sleeping individuals, and that it is the responsibility of individuals in the household that are capable of assisting other to provide assistance to those who may not be awakened by the alarm sound, or to those who may be incapable of safely evacuating the area unassisted.
- Install and maintain fire extinguishers on every level of the home and in the kitchen, basement and garage. Know how to use a fire extinguisher prior to an emergency.

## 12. How to Identify Nuisance Alarms

**Smoke Nuisance**  
**SILENCE:** If you know why the alarm is sounding, and you can verify that it is not a life-threatening situation, you can push the button to silence the alarm for approx 8 minutes. If the smoke is not too dense, that unit will silence. After the SILENCE period, the smoke alarm will automatically reset and sound the alarm if particles of combustion are still present. You can use SILENCE repeatedly until the air has been cleared of the condition causing the alarm.

**NOTE:** Pressing the button on the initiating smoke unit in your system will silence the alarm notification, including all interconnected units.

**NOTE:** Dense smoke will override SILENCE and sound a continuous alarm. If no fire is present, check to see if one of the reasons listed in "locations to avoid" may have caused the alarm. If a fire is discovered, get out and call the fire department or 911.

This alarm is designed to minimize nuisance alarms. Cigarette smoke will not normally cause the alarm, unless the smoke is blown directly into the alarm. Combustion particles from cooking may set off the alarm if they are located too close to a cooking appliance. Large quantities of combustible particles are generated from spills or when broiling. Using the fan on a range hood that vents to the outside (the non-recirculating type) will also help prevent nuisance alarms from occurring by removing these combustible products from the kitchen.

## 13. Maintenance Information

- To keep your smoke alarm in good working order, please follow these simple steps:**
- Verify the unit's alarm sound and indicator operation by enabling the test button once a week.
  - To remove the alarm from the bracket, rotate the alarm counter clockwise in the direction To disconnect the AC power, squeeze the locking arms on the sides of the AC Quick Connector while pulling the connector away from the bottom of the alarm
  - Clean the alarm cover and vents with a soft brush attachment for the outside of the alarm once a month to remove dust and dirt. You can clean the interior of your alarm (sensing chamber) by using compressed air or a vacuum cleaner hose and blowing or vacuuming through the openings around the perimeter of the alarm.
  - Never use water, detergents or other solvents to clean the unit.
  - Avoid spraying air fresheners, hair spray, or other aerosols near the device.
  - Never attempt to disassemble the unit or clean inside. This action will void your warranty.
  - As soon as possible, place the Smoke alarm back in its proper location to assure continuous protection from fire.
  - When household cleaning supplies or similar contaminants are used, the area should be ventilated.

**WARNING!** Reinstall the alarm as soon as possible to ensure continuous detection.

**WEEKLY TESTING**

- Never use an open flame to test the alarm. This could damage the unit or ignite nearby materials, leading to a fire hazard.
- If the Alarm ever fails to test properly, replace it immediately. Products under warranty may be returned to the manufacturer for replacement. See "Warranty Information" at the end of this manual.

Avoid standing too close to the alarm when it sounds, as the noise may harm your hearing. Always maintain an arm’s length distance when testing the unit. Test the alarm weekly to ensure it is functioning correctly. Use the test button as the recommended method for testing this smoke alarm. Press and hold the test button for 2 seconds to verify proper alarm operation. During testing, the unit may flash a red LED accompanied by periodic alarm sounds. (The beeping sound is in gradual mode, and the test alarm rings for two cycles.). If it does not alarm, make sure the unit is powered properly and test it again. If it still does not work, replace it immediately.

**IMPORTANT:** Retail canned smoke products vary by manufacturer and produce inconsistent results. If the unit does not alarm when canned smoke is applied, conduct a push-to-test to verify proper operation. Over-application of canned smoke can permanently damage the alarm.

**WARNING!** Due to the loudness of the alarm, always stand about 3 feet (0.9 m) away from the unit or use ear protection when testing. Do not use an open flame to test your alarm, you could damage the alarm or ignite combustible materials and start a structure fire.

## 14. Special Compliance Considerations

This smoke alarm alone is not a suitable substitute for complete fire detection systems in places housing many people—like apartment buildings, condominiums, hotels, motels, dormitories, hospitals, long-term health care facilities, nursing homes, day care facilities, or group homes of any kind, even if they were once single-family homes. It is not a suitable substitute for complete fire detection systems in warehouses, industrial facilities, and commercial buildings, and special-purpose non-residential buildings that require special fire detection and alarm systems. Depending on the building codes in your area, this smoke alarm may be used to provide additional protection at these facilities. The following information applies to all four types of buildings listed below: In new construction, most building codes require the use of only AC or AC/DC-powered smoke alarms only. AC, AC/DC, or DC-powered smoke alarms can be used in existing construction as specified by local building codes. Refer to NFPA 72 (the National Fire Alarm Code) and NFPA 101 (Life Safety Code), local building codes, or consult your Fire Department for detailed fire protection requirements in buildings not defined as “households.”

- Single-Family Residence:** single-family home, township. It is recommended smoke alarms be installed on every level of the home, in every bedroom, and in each bedroom hallway.
- Multi-Family or Mixed Occupant Residence:** Apartment building, condominium. This smoke alarms are suitable for use in individual apartments or condos, provided a primary fire detection system already exists to meet fire detection requirements in common areas like lobbies, hallways, or porches. Using this smoke alarm in common areas may not provide sufficient warning to all residents or meet local fire protection ordinances/regulations.
- Institutions:** Hospitals, daycare facilities, and long-term health care facilities. This smoke alarm is suitable for use in individual patient sleeping/resident rooms, provided a primary fire detection system already exists to meet fire detection requirements in common areas like lobbies, hallways, or porches. Using this smoke alarm in common areas may not provide sufficient warning to all residents or meet local fire protection ordinances/regulations.
- Hotels and Motels:** Also boarding houses and dormitories. This smoke alarm is suitable for use inside individual sleeping/resident rooms, provided a primary fire detection system already exists to meet fire detection requirements in common areas like lobbies, hallways, or porches. Using this smoke alarm in common areas may not provide sufficient warning to all residents or meet local fire protection ordinances and regulations.

## 15. Warranty Information

**TEN-YEAR LIMITED WARRANTY**  
This product is warrantied to be free from defects in material and workmanship for a period of 10 (ten) years from the date of purchase. For products containing a sealed battery, this warranty does not cover any damage that may be caused by the battery. Warranty does not apply to repaceable battery. This warranty applies only to the original consumer purchaser and only to products used in normal residential use and service. If this product is found to be defective, the only obligation, and your exclusive remedy, is the repair or replacement of the product, at the company's discretion, provided that the product has not been damaged through misuse, abuse, accident, modification, alteration, neglect, or mishandling. This Warranty shall not apply to any product which is found to have been improperly installed, set-up, or used in any way not in accordance with the instructions supplied with this product.

**ALARM RETURNS**  
For replacement of this alarm under the terms of this Warranty, please contact customer service at [feit.com/help](mailto:feit.com/help) for assistance. The company does not warrant, and specifically disclaims any warranty, whether express or implied, of fitness for a particular purpose, other than the warranty contained herein. No implied warranty on this product, created by state law, shall extend beyond the term of this warranty unless such law otherwise provides. The company specifically disclaims any liability and shall not be liable for any consequential or incidental loss or damage, including, but not limited to, damages to any equipment with which this product is used. Some states do not allow the exclusion or limitation of incidental or consequential damages, so the above limitations or exclusions may not apply to you. No agent, representative, dealer, or employee of the company has the authority to increase or alter the obligations or terms of this Warranty. This Warranty gives you specific legal rights and you may also have other rights which vary from state to state. This Warranty is only valid for merchandise purchased from outlets in the United States and Canada. This warranty expires upon product end-of-service life signal.