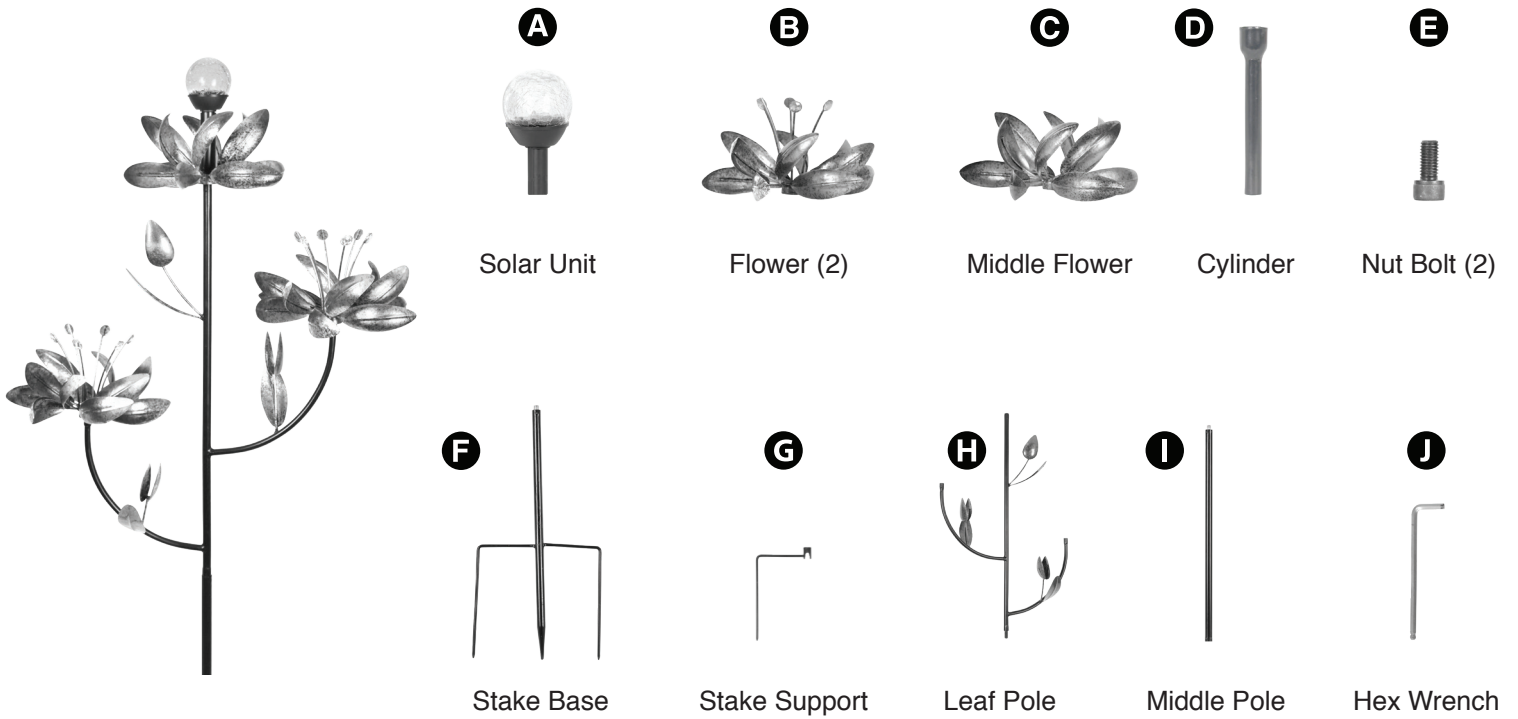


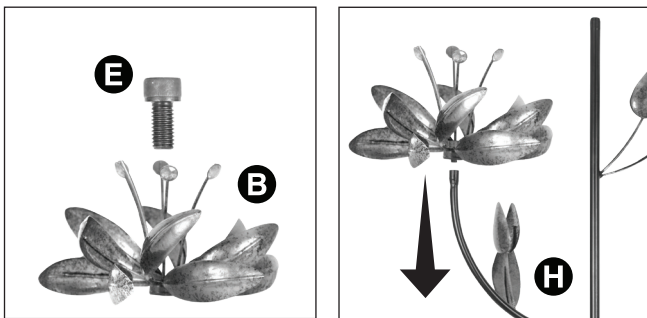
TROPICAL KINETIC SPINNER

Assembly Instructions



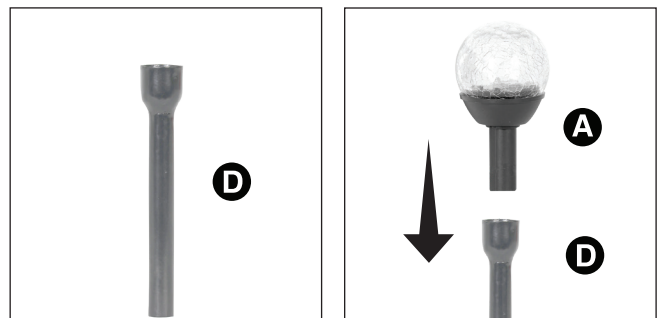
Step 1:

Attach flower (B) to leaf pole (H) by using the nut bolt (E). Use hex wrench (J) to tighten nut bolt (E). Repeat step for the other side.



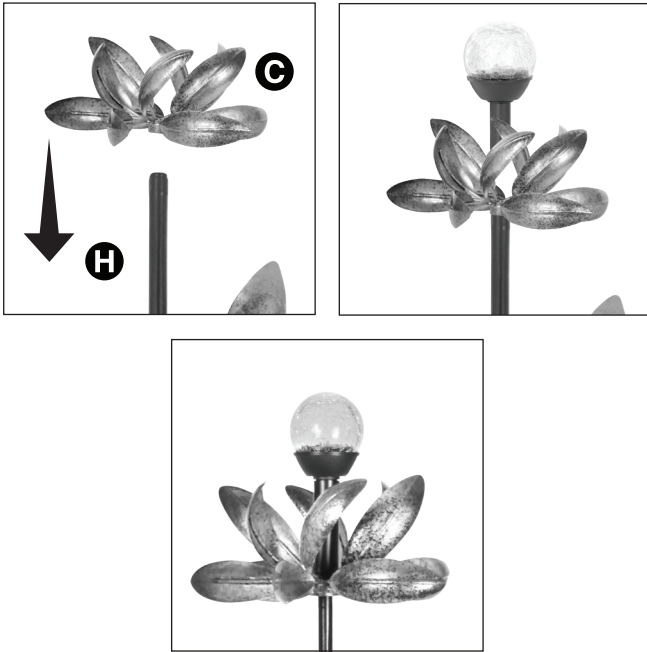
Step 2:

Place solar unit (A) firmly on top of the cylinder (D).



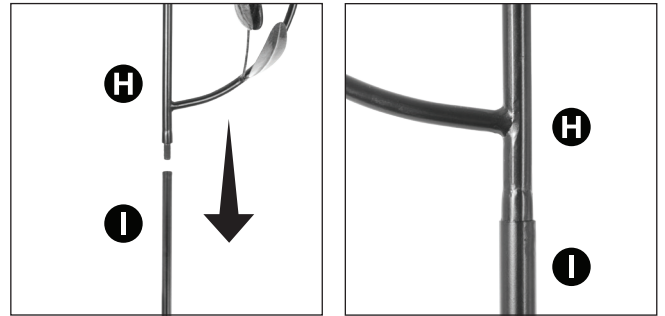
Step 3:

Place middle flower (C) on top of leaf pole (H). Then place solar unit (A) (the result of step 2) firmly on top of leaf pole.



Step 4:

Attach leaf pole (H) to middle pole (I) by turning it to the right until it is firmly tightened.



Lay Assembly on the ground for the following steps.

Step 5:

Slide stake support (G) into stake base (F) by inserting it through the top. Then attach stake base (F) into the bottom of middle pole (I) (result of step 5) by turning it to the right until it is firmly tightened. When everything is assembled, insert stake base firmly into the ground. For best results, install on a flat ground and ensure that the stake is 90 degrees vertical to the ground.

