

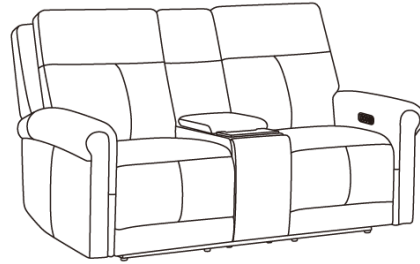
FLEXSTEEL®

Power Reclining Loveseat with Console & Power Headrest & Lumbar

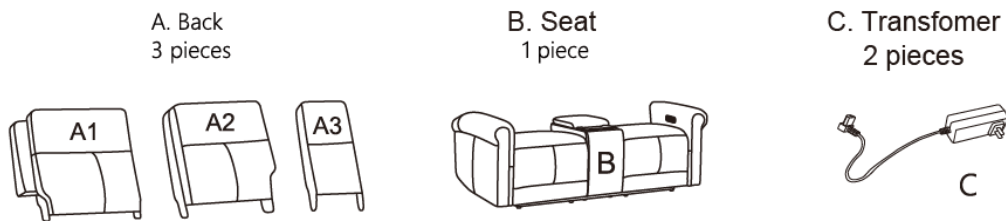
IMPORTANT NOTE

Read these instructions carefully, and familiarize yourself with each procedure before assembling the furniture. Check that you have all the component parts, and familiarize yourself with each part before proceeding.

Take all the fittings out of the plastic bag and separate them into groups. Ensure you have enough space to lay out all the parts before assembly. To prevent damage to the parts, we recommend that you assemble the unit on a soft, flat surface.



Part List



Assembly Instructions

STEP 1

Take out the Transformers (C) from the bottom of the seat (B). (See Figure 1)

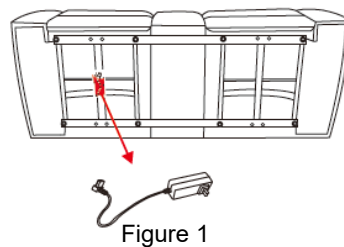


Figure 1

STEP 2

Attach Left Back (A1), Middle Back (A3) and Right Back (A2) to Seat (B), ensure the brackets fit tightly. (See Figure 2)

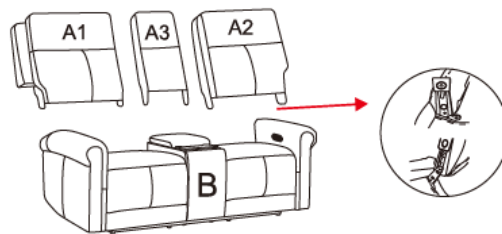


Figure 2

STEP 3

Zip the fabric on bottom of Backs (A1 & A2) with back of Seat (B). (See Figure 3).

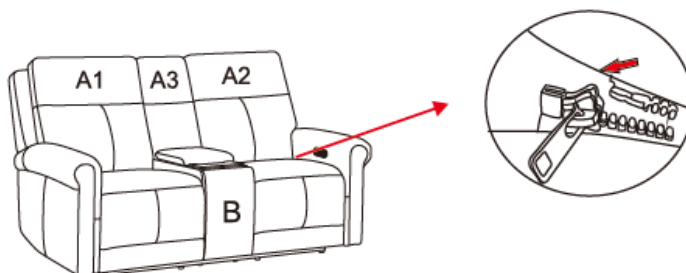
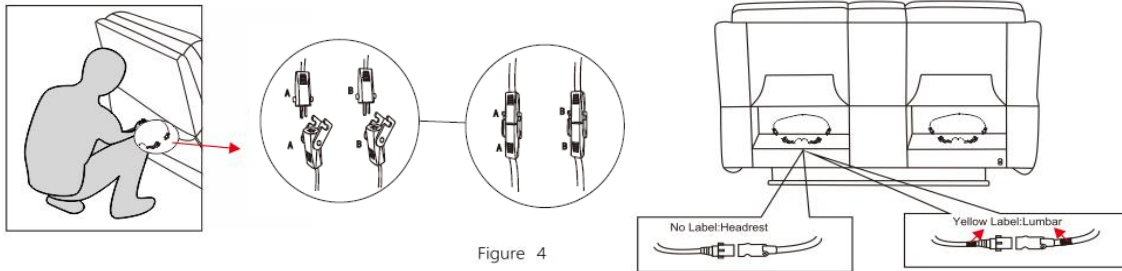


Figure 3

STEP 4

Flip up the back flaps, and remove the headrest and lumbar cables from the Backs (A1 & A2). Connect the headrest cables to the power button control cables, connect the lumbar cables (yellow label) to the power button control cables (yellow label). (See Figure 4)



STEP 5

Connect one transformer (C) into the power port on the back of the piece and connect the other transformer (C) to the cable from the middle seat. Plug both transformers (C) into nearby outlets, ensuring the cables are clear of the metal base. (See Figure 5). Then fasten the back flaps to the bottom of the furniture. (See Figure 6)

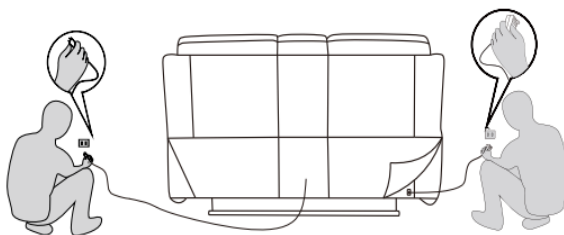


Figure 5

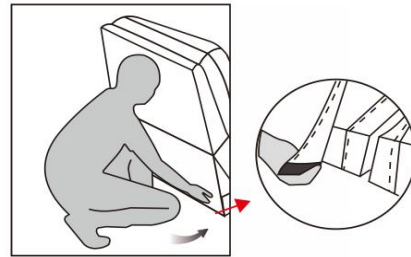


Figure 6

Disassemble Back (A)

Pull up the spring leaf in bracket, then lift Backs (A) up. Unzip the fabric on bottom of backs from backs of seat. (See figure 7)

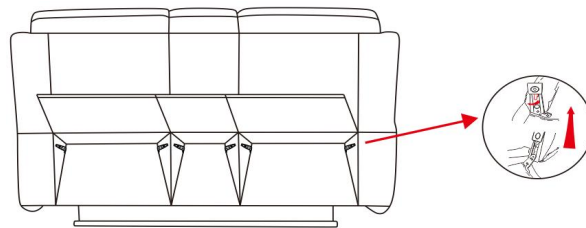
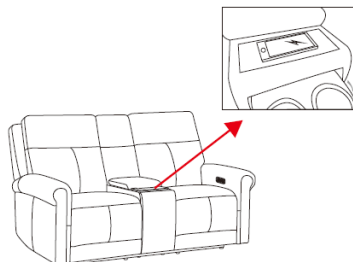


Figure 7

Wireless Charging Pad

Place your Qi compatible device on the wireless charging pad to charge it up to 10 Watts.



IMPORTANT NOTE

- To avoid any risk of suffocation to children or pets, dispose of all plastic bags immediately.
- To ensure proper performance, occasionally check for loose screws and tighten as needed.
- If the reclining functions are not working properly, check for loose cable connections before contacting the retailer.