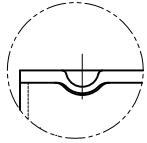
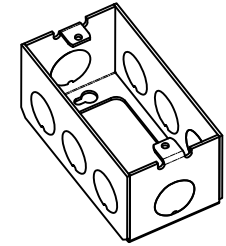


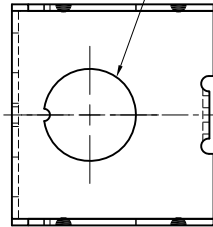
SIDES	BOTTOM
8 1/2" KNOCKOUTS	
Material: Steel-0.0625"-G60 Galvanized	



WELDING STYLE DETAIL VIEW D

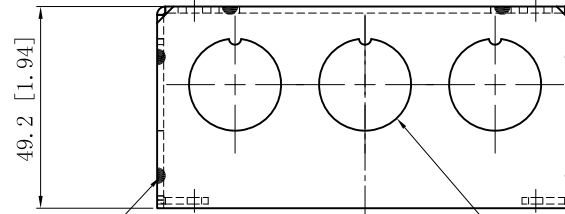


2 1/2" KNOCKOUTS $\phi=22.50$ [$\phi=0.886$]
MIRROR



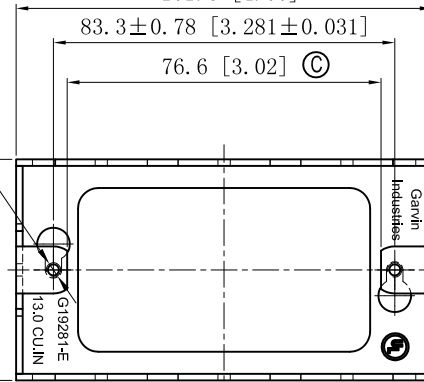
12 PLACES SPOT WELDING

2-#6-32 UNC HOLE



49.2 [1.94]

54.0 [2.13]



101.6 [4.00]

83.3 ± 0.78 [3.281 ± 0.031]

76.6 [3.02] ©

G19281-E
13.0 CU IN

6 1/2" KNOCKOUTS $\phi=22.50$ [$\phi=0.886$]
MIRROR

DESCRIPTION
TRADE REFERENCE TERMS

This data sheet is for reference only .GARVIN INDUSTRIES reserves the right to make changes to the design without prior notice.

STANDARD PACKING	GARVIN INDUSTRIES		
50 PCS	TITLE HANDY UTILITY BOXES & EXTENSION RINGS		
	SIZE A4	DWG NO. G19281-E	REV C
	DATA SHEET		