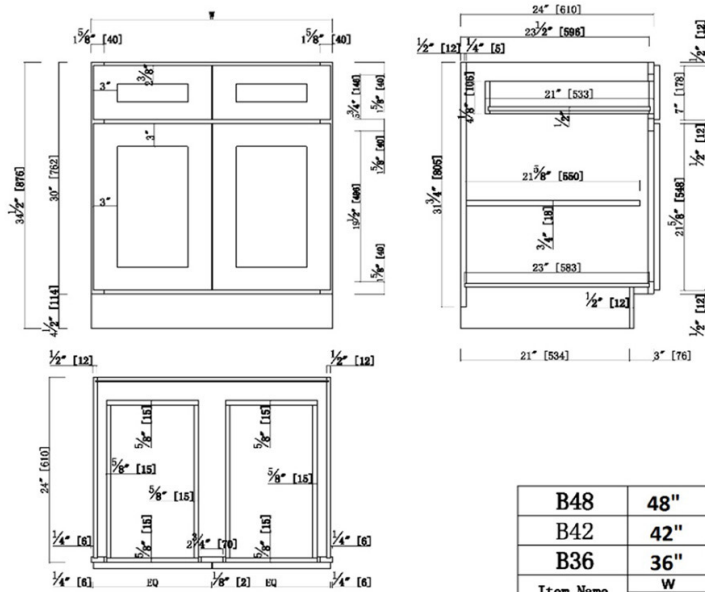


Brookings Unassembled Shaker Base Kitchen Cabinet 36x34.5x24 White



| | | |
|-----------|-----|--------|
| B48 | 48" | 23.75" |
| B42 | 42" | 20.75" |
| B36 | 36" | 17.75" |
| Item Name | W | EQ |

SPECIFICATIONS

MATERIAL CONSTRUCTION: Wood
WOOD SPECIES: Maple
ASSEMBLED DIMENSIONS: 34.5" H x 36" L x 24" D
ASSEMBLED WEIGHT: 89.37 lbs.
KITCHEN CABINET TYPE: Base
MOUNTING TYPE: Floor Mount
CONSTRUCTION TYPE: Face Frame
HINGE STYLE: Soft Close
DOOR STYLE: 2 HDF shaker doors

DRAWER DIMENSIONS 1: 4.17" H x 21" L x 14.48" D
DRAWER DIMENSIONS 2: 4.17" H x 21" L x 14.48" D
DRAWER DIMENSIONS 3: N/A
DWR BOX MATERIAL: SOLID WOOD
DWR CONSTRUCTION: Dove Tail
DWR GLIDE: Dove Tail
FAKE DWR QTY: 0
FAKE DWR LOCATION: N/A

WARRANTY: 1-Year limited warranty
LEGAL FOR SALE IN CALIFORNIA: Yes
CARB COMPLIANT: CARB Phase 2
TSCA TITLE IV COMPLIANT: Yes

NUMBER OF SHELVES: 1
SHELF STYLE: Flat
ADJUSTIBLE SHELVES: Yes
SHELF ADJUSTIBILITY INCREMENTS: 2.5"
SHELF DIMENSIONS: 34.5" W x 21.625" D
SHELF THICKNESS: 0.75"
SHELF MATERIAL: Plywood
FACE FRAME MATERIAL: Solid Maple
SIDES MATERIAL: Plywood
BOTTOM MATERIAL: Plywood
BACK PANEL MATERIAL: Plywood
BACK BRACE MATERIAL: Wood
TOE KICK INSET WIDTH: 3"
TOOLS NEEDED FOR INSTALLATION: Phillips Screwdriver
Mallet Wood Glue
Wood Screw
FASTENER TYPE:



TYPE:
JOB:
ORDER CODE:
APPROVALS: