



DENALI AIRE™

OWNER'S MANUAL

16" OSCILLATING PEDESTAL FAN



MODEL 1DAFP16

SAFETY INSTRUCTIONS

IMPORTANT SAFETY INSTRUCTIONS

CAUTION

Read Rules for Safe Operation and Instructions Carefully.

WARNING

1. Do not leave the fan running unattended.
2. Keep electrical appliances out of reach from children. Do not let them use the appliances without supervision.
3. This appliance has a polarized plug (one blade is wider than the other). To reduce the risk of electric shock, this plug is intended to fit in a polarized outlet only one way. If the plug does not fit fully in the outlet, reverse the plug. If it still does not fit, contact a qualified electrician. Do not attempt to defeat this safety feature.
4. If the supply cord is damaged, it must be replaced by manufacturer or its service agent or a similarly qualified person in order to avoid a hazard.
5. This appliance is not intended for use by persons (including children) with reduced physical, sensory or mental capabilities, or lack of experience and knowledge, unless they have been given supervision or instruction concerning use of the appliance by a person responsible for their safety. Children should be supervised to ensure that they do not play with the appliance.
6. When the fan was assembled, the rotor blade guard shall not be taken off anymore
 - Prior cleaning unplug the fan.
 - The rotor guard shall not be disassembled/opened to clean the rotor blades.
 - Wipe the fan enclosure and rotor blade guard with a slightly damp cloth.

7. To reduce the risk of fire or electric shock, do not use this fan with any solid-state speed control device.
8. This product employs overload protection (fuse). A blown fuse indicates an overload or short-circuit situation. If the fuse blows, unplug the product from the outlet. Replace the fuse as per the user servicing instructions (follow product marking for proper fuse rating) and check the product. If the replacement fuse blows, a short-circuit may be present and the product should be discarded or returned to an authorized service facility for examination and/or repair.
9. Do not operate any fan with a damaged cord or plug. Discard fan or return to an authorized service facility for examination and/or repair.
10. Do not run cord under carpeting. Do not cover cord with throw rugs, runners, or similar coverings. Do not route cord under furniture or appliances. Arrange cord away from traffic area and where it will not be tripped over.

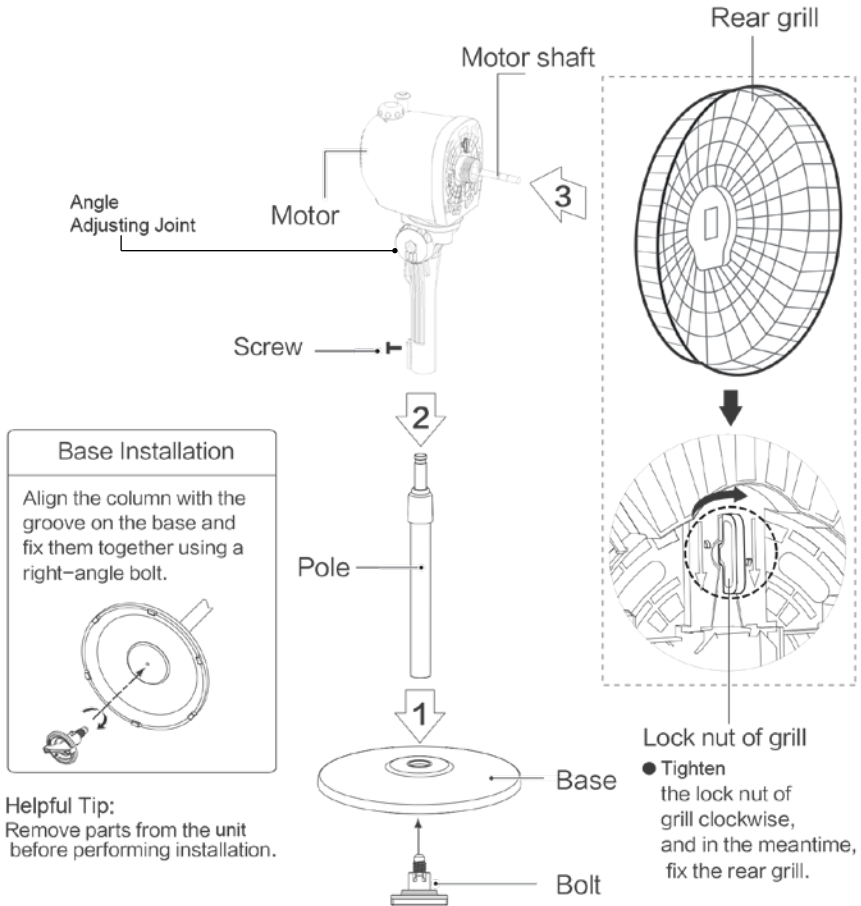
RULES FOR SAFE OPERATION

1. Never insert fingers, pencils, or any other object through the grille when fan is running.
2. Disconnect fan when moving from one location to another.
3. Be sure fan is on a stable surface when operating to avoid overturning.
4. DO NOT use fan in window, rain may create electrical hazard.
5. Household use only.

INSTALLATION

INSTALLATION INSTRUCTIONS

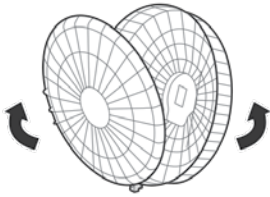
Name of components



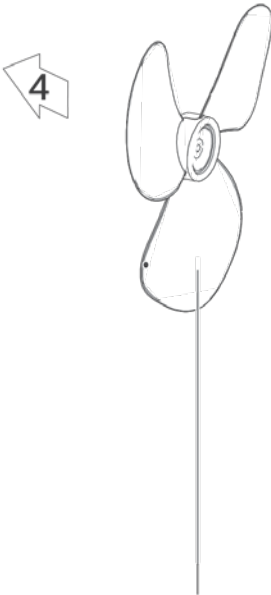
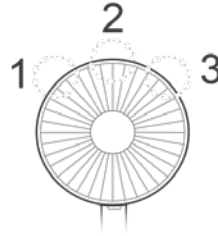
INSTALLATION

(Continued)

Align Catch of the Front Guard with the illustrated position of the Rear Guard.



Press guards against one another with both hands to attach them.

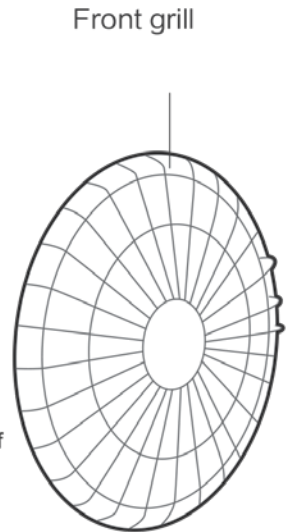


Blade

- Pull the blade to rotate after installing, so as to ensure the blade can be rotated normally.



- Turn the lock nut of blade counter clockwise and then install the front fan cover



INSTRUCTIONS FOR USE

Front and Rear Guard Installation

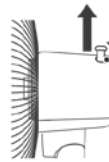
Tilt Adjusting

To adjust the air flow upward or downward, press against the guard to tilt in desired location. A clicking noise will sound when adjusting the tilt, this is normal.



Horizontal Swing

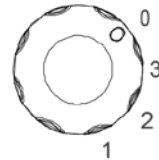
Pull-up for static



Push-down to swing

Swing Pull-knob

Speed control knob



Speed control

0--Off 1--Low 2--Medium 3--High

Height Adjustment

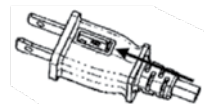
Turn counter clockwise to loosen and then adjust to desired height. Turn clockwise to lock in place.



Height Adjustment Key

USER SERVICING INSTRUCTIONS

1. Grasp plug and remove from the receptacle or other outlet device. Do not unplug by pulling on cord.
2. Open fuse cover. Slide the fuse cover on top of the attachment plug towards the blades.



MAINTENANCE

3. Remove fuse carefully. Insert the tip of your tool into the fuse slot (close with the terminal), then pry the fuse out slowly, but not forcefully. If it feels tight, you can try several times to pry the fuse out little by little. When one side of the fuse has been pry, then you can get the fuse out entirely.
4. Risk of fire. Replace fuse only with 2.5 Amp, 125 Volt fuse.
5. Close fuse cover. Slide the fuse access cover on top of the attachment plug closed.
6. Risk of fire. Do not replace attachment plug, as this contains a safety device (fuse) that should not be removed. Discard the product if the attachment plug is damaged.

NOTICE: When you replace the fuse, please don't operate suddenly or overexert, or else the product will be damaged or cause an accident. If it feels hard to replace the fuse, please make sure you have it inserted the right way.

CARE & MAINTENANCE

1. Be sure to unplug from the electrical supply before cleaning.
2. To ensure adequate air circulation to the fan motor, keep the vents at the rear of the motor housing free of dust, debris, and etc. You can use a vacuum cleaner to clean these vents after the unit has been disconnected from the outlet. Do not disassemble the motor housing to clean.
3. Plastic parts should be cleaned with mild soap and a damp cloth or sponge. Thoroughly remove soap film with clean water. Do not use any abrasive detergent or solvents to avoid scratching the surface. Do not use the following cleaner: gasoline, thinner, benzene.
4. Be sure to not get water or other liquids inside of the motor housing.
5. Be sure to let the unit fully dry before resuming operation.

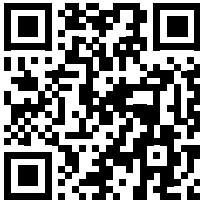
For your records, staple your sales receipt to this manual and record the following:

Date of Purchase: _____

Place of Purchase: _____

NOTE: Proof of purchase is required for all warranty claims.

NOTE: As a result of continual improvements, the design and specifications of the product within may differ slightly to the unit illustrated on the packaging.



SCAN CODE TO
LEAVE A REVIEW

THANK YOU FOR YOUR PURCHASE!

As a small business, reviews are everything!

We'd love to hear how you are enjoying your Denali Aire product! Please take a minute to tell us (and others) about your experience.

Thanks (again!)



DENALI AIRE™

5401 Dansher Road
Countryside, IL 60525

888-433-6254 | support@denali-aire.com | www.denali-aire.com