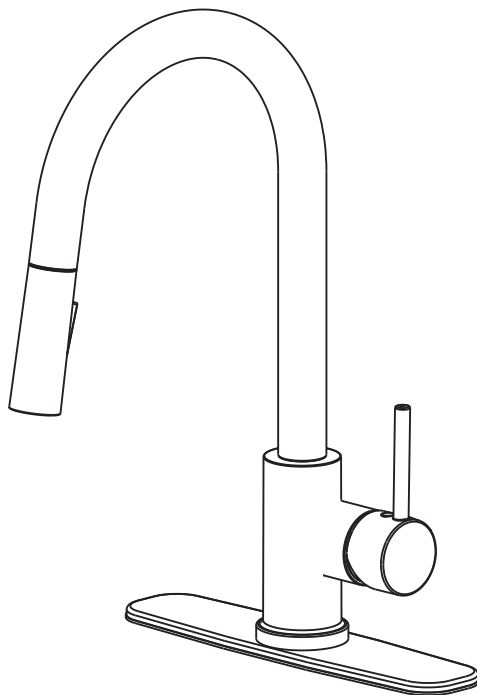




ITEM: KF-AZ601**
ANZZI KITCHEN FAUCET
INSTALLATION & OPERATION MANUAL

V1.0
03/03/2025



DON'T WAIT! REGISTER NOW!

Register your product within 90 days to ensure it is recognized as a purchase and covered under warranty.

Register online at <https://anzzi.com/pages/register> or scan the QR code on PG. 2.

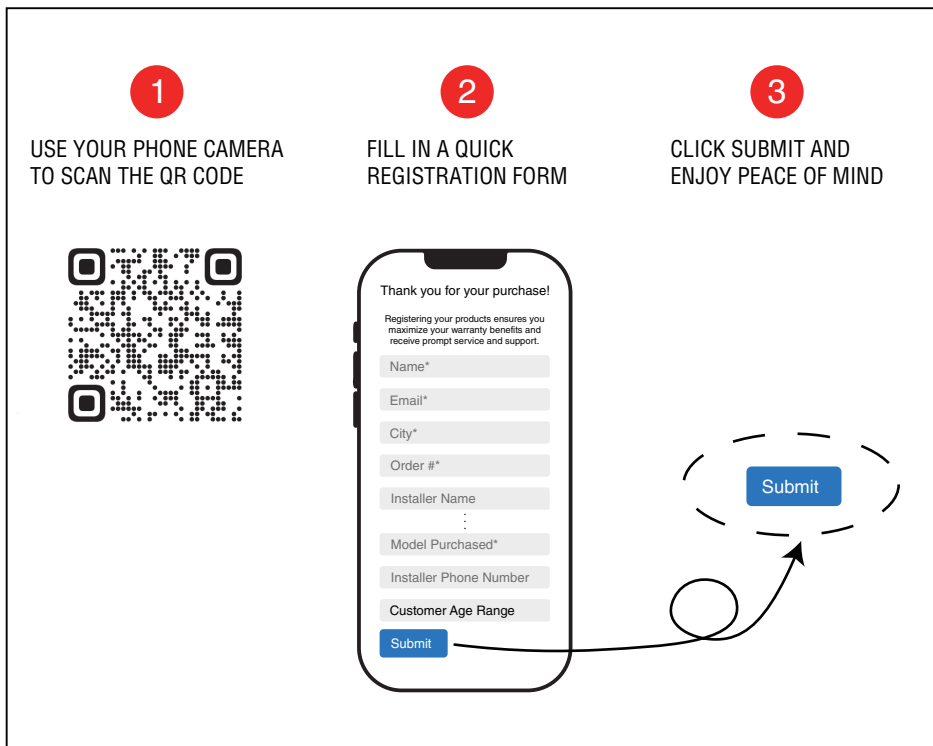


PRODUCT REGISTRATION*

IMPORTANT: Warranty will not be recognized unless product is registered.

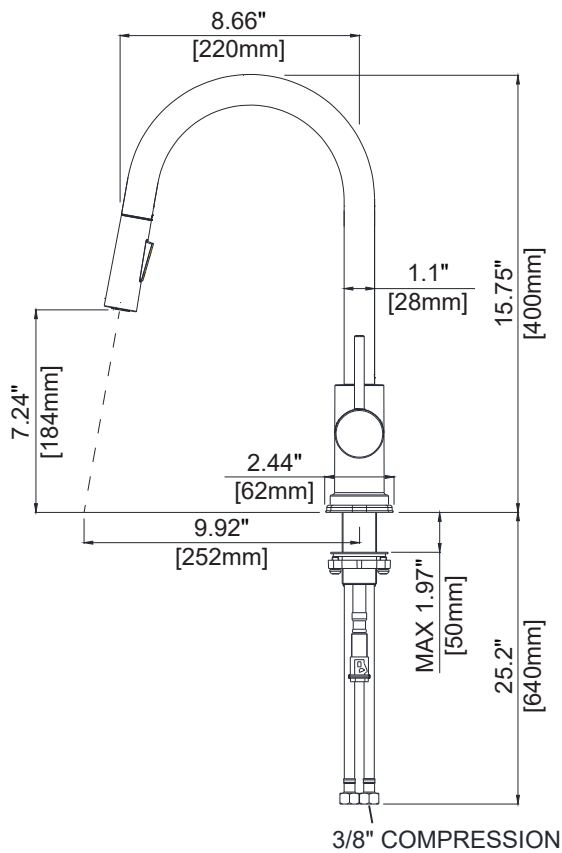
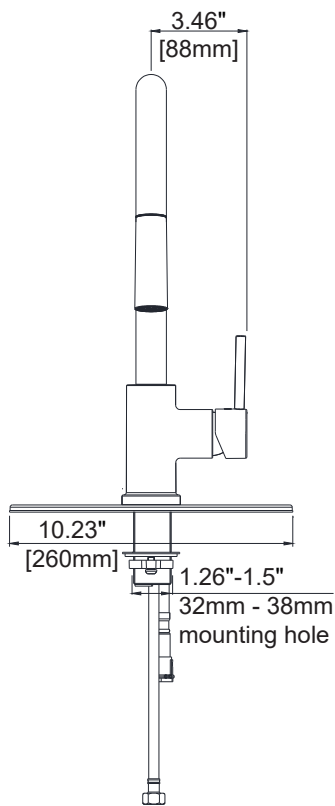
Register online at <https://anzzi.com/pages/register> or Scan the QR code below.

Registering your product maximizes your warranty benefits and ensures prompt service and support.



Need help? For technical support call 305-614-4070 or visit us at www.ANZZI.com

PRODUCT SIZE CHART



TOOLS



Wrench

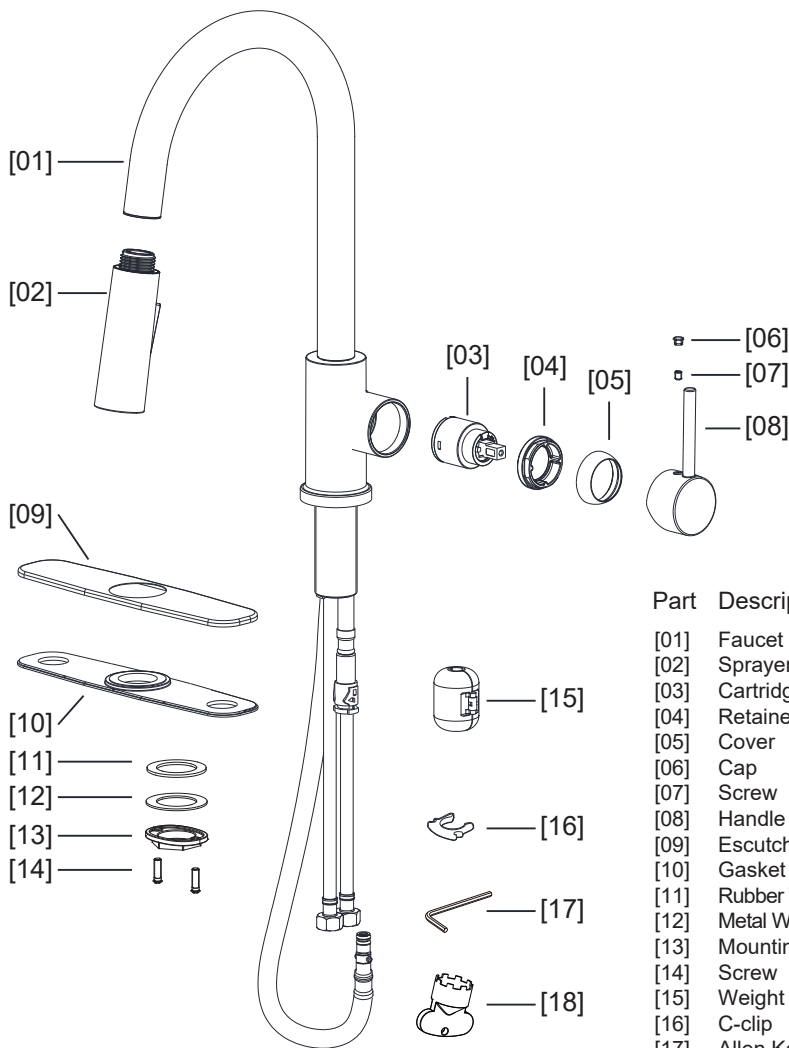


Screwdriver



Bucket

COMPONENTS



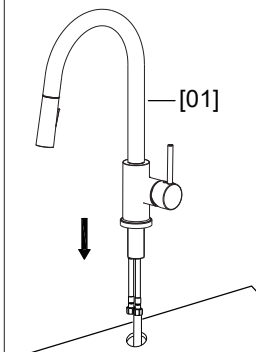
Part	Description	Qty.
[01]	Faucet	1
[02]	Sprayer	1
[03]	Cartridge	1
[04]	Retainer	1
[05]	Cover	1
[06]	Cap	1
[07]	Screw	1
[08]	Handle	1
[09]	Escutcheon	1
[10]	Gasket	1
[11]	Rubber Washer	1
[12]	Metal Washer	1
[13]	Mounting Nut	1
[14]	Screw	2
[15]	Weight	1
[16]	C-clip	1
[17]	Allen Key	1
[18]	Service Key	1

Before installation:

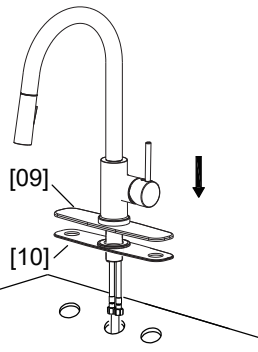
- 1. Please ensure that all components are included.
- 2. Ensure all supply lines are free of debris and that supply stops are installed.
- 3. Ensure water pressure is between 20-125 PSI.
- 4. If you encounter difficulties during installation, please contact a professional plumber.

INSTALLATION

1.1 SINGLE HOLE



1.2 THREE HOLES



STEP 1

Remove the **Rubber Washer [11]**, **Metal Washer [12]** and **Mounting Nut [13]** from the **Faucet [01]**.

For single hole applications, install the **Faucet [01]** through the faucet hole.

For three holes applications, install the **Faucet [01]** through the **Escutcheon [09]** and **Gasket [10]** in the faucet hole.

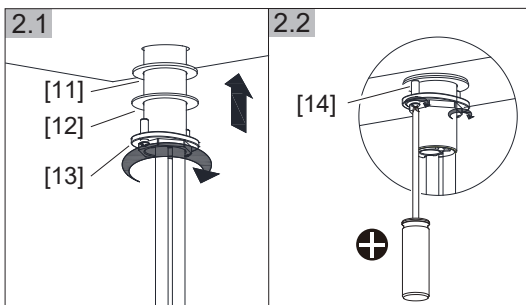
Adjust the **Escutcheon [09]**.

Note: Faucet handle should always be on the right-hand side. (fig 1.1, 1.2)

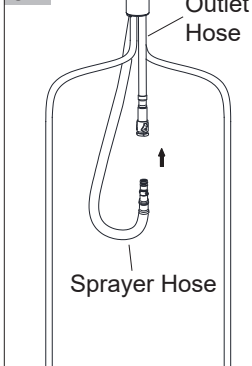
STEP 2

2.1 Slide the **Rubber Washer [11]** and **Metal Washer [12]** onto the **Faucet [01]** from under the sink and secure them with the **Mounting Nut [13]**. (fig 2.1)

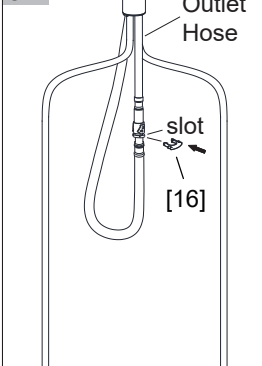
2.2 Hand-tighten the **Mounting Nut [13]** and then tighten the **Screws [14]** with a screwdriver to secure the faucet. (fig 2.2)



3.1



3.2

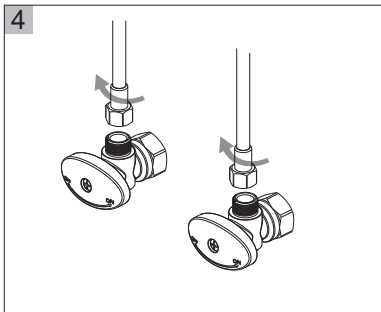


STEP 3

3.1 Connect the **Sprayer Hose** (the longest one) to the connector of the **Outlet Hose** (the shortest one). Push in until a "click" is heard. Then, tug the hose downward to ensure it's connected firmly. (fig 3.1)

3.2 Install and push the **C-clips [16]** to the **slot** of **Outlet Hose** until they stop to secure the connections. (fig 3.2)

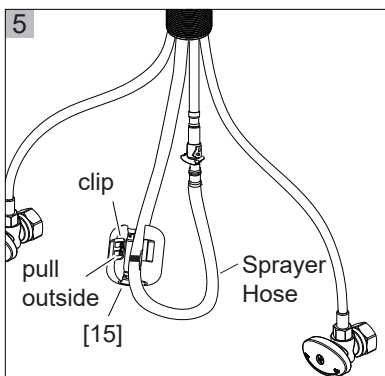
INSTALLATION



STEP 4

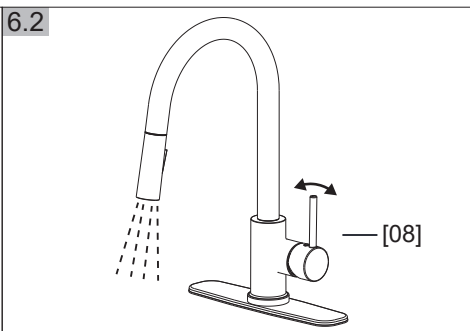
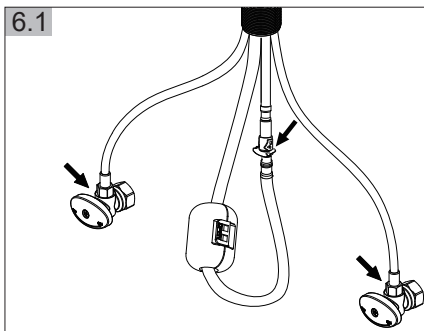
Make sure all fittings and end connections are free of debris. Turn off the supply valves (not provided). Connect the faucet supply hoses to the supply valves, ensuring the hose labeled 'HOT' is connected to the hot supply valve and the hose labeled 'COLD' is connected to the cold supply valve, hand tighten them, then tighten with wrench. **DO NOT OVERTIGHTEN.**

WARNING: Do not use pipe dope or other sealants on water connections.



STEP 5

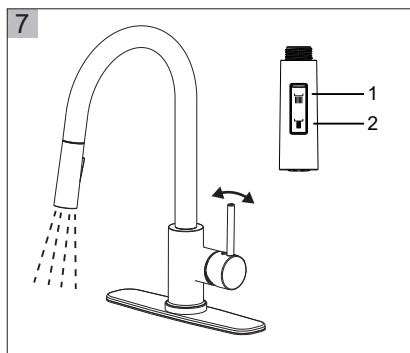
- 5.1 Pull the **clip** of **Weight [15]** outside to open it.
- 5.2 Install the **Weight [15]** to the position of the **Sprayer Hose** where is marked with a "weight" label.
- 5.3 Push to close the **Weight [15]** until a "click" sound is heard.
- 5.4 Shake the **Weight [15]** to make sure it is secured.



STEP 6

- 6.1 Turn on hot and cold water supplies and check all connections at arrows for leaks. Retighten if necessary, but avoid overtightening. (fig 6.1)
- 6.2 Open the handle to start the flow of water. Set the water temperature using the handle. Turning the handle forward will raise the water temperature. Let the water flow and check all connections at arrows for any leaks. Move the handle towards the faucet to turn off the flow of water. (fig 6.2)

OPERATION



SPRAYER FUNCTIONS

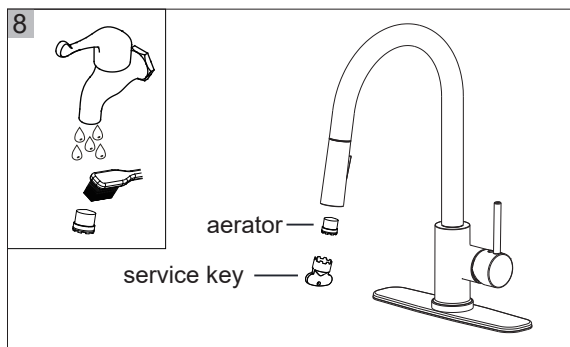
The sprayer will be in flow mode when the faucet is turned on. Press the button to switch to spray mode. The sprayer automatically switches back to flow mode when the faucet is turned off.

Notice:

1. Leaks or damage may occur due to improper installation. Read all instructions before making any final connections and turning on water supplies.
2. When leaving home or not using the faucet for an extended period, please close all water supply lines.

CLEANING & MAINTENANCE

1. To preserve the finish on the metallic parts of your ANZZI faucet, apply a non-abrasive wax, such as car wax, and rinse off any cleaner immediately.
2. Clean the aerator regularly for calcium build-up or any blockage that reduces water flow.
3. If the water flows slower than normal, please clean the aerator at the sprayer.
 - a. Remove the aerator using the service key packed with the product.
 - b. Use a brush and clean water to clean the aerator.
 - c. Install the aerator back to the sprayer.



Troubleshooting Table

Symptoms	Probable Causes	Recommended Action
No flow	The supply stops are closed.	Confirm that the supply stops are open.
	Handle is in the closed position.	Rotate the handle to the open position. Refer to the "Operation" section.

