

APP USER GUIDE



Feit Electric App

For 24/7 customer support, visit feit.com/help

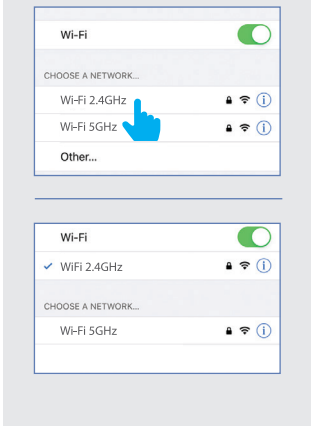
System Requirements
Minimum: iOS 11.0, Android™ 6.0 Marshmallow or higher
- Dedicated 2.4GHz Wi-Fi Network -

Your screen images may differ from this user guide.

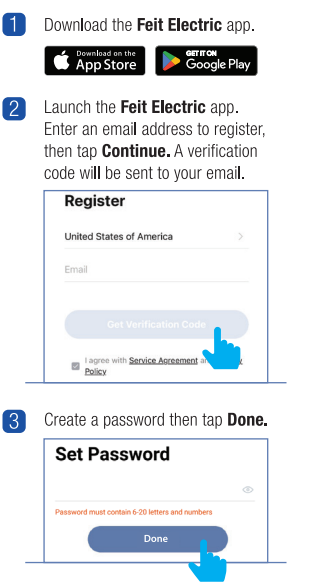
BEFORE USING THIS USER GUIDE SEE INCLUDED INSTALLATION GUIDE FOR PROPER PRODUCT INSTALLATION.

NOTE: Only works with 2.4GHz Wi-Fi networks.

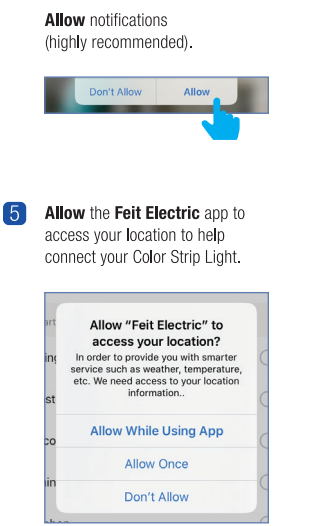
Go to your Wi-Fi settings and connect your phone to your 2.4GHz Wi-Fi network.



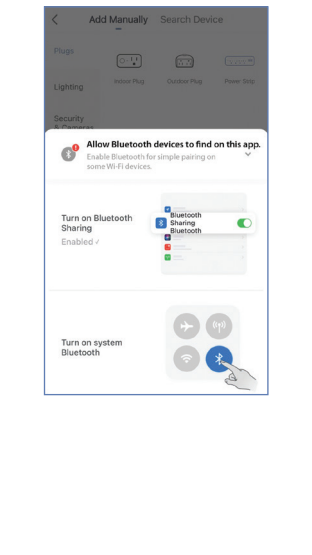
Set Up Device



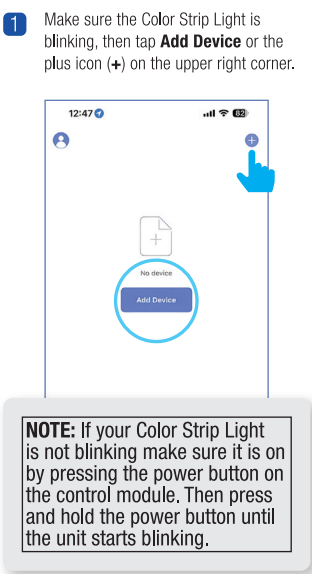
Permissions & Location Access



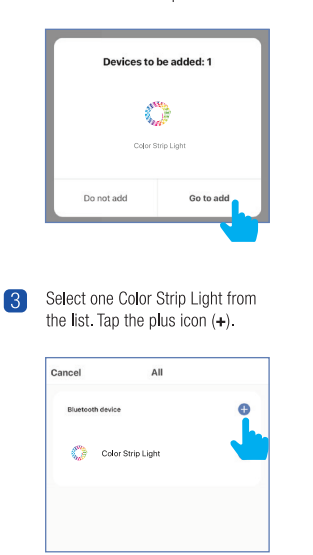
Enable Bluetooth on your smart device to facilitate simple pairing.



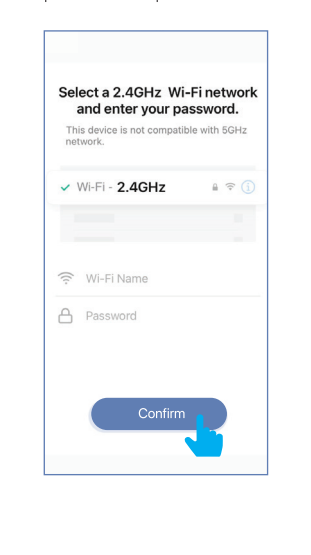
Simple Pairing Mode



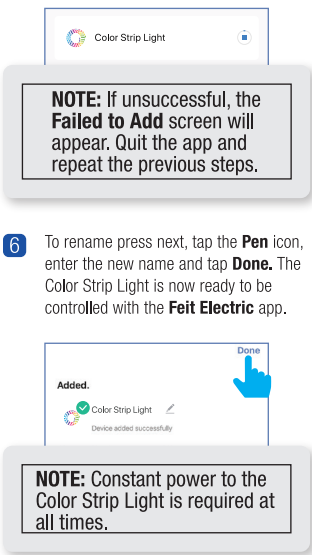
Simple Pairing Mode



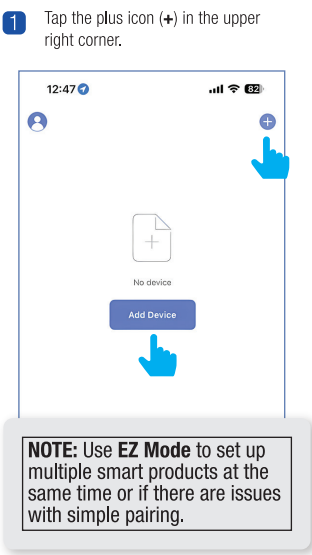
Simple Pairing Mode



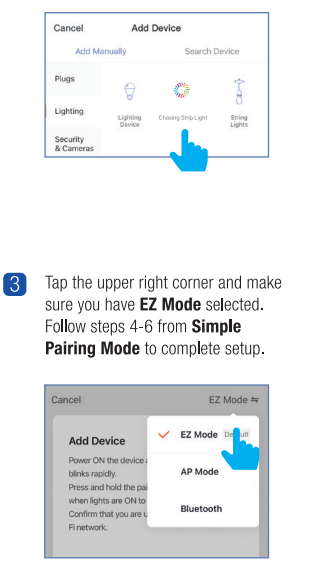
Simple Pairing Mode



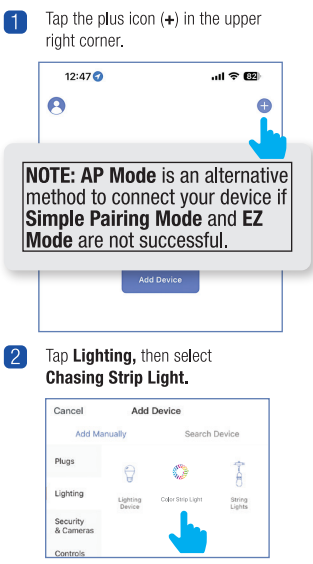
Alternative Set-up Method EZ Mode



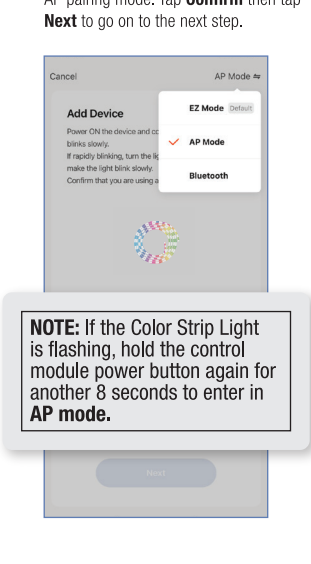
Alternative Set-up Method AP Mode



Alternative Set-up Method AP Mode



Alternative Set-up Method AP Mode



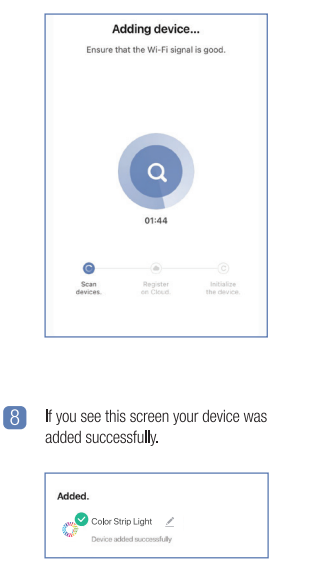
Alternative Set-up Method AP Mode



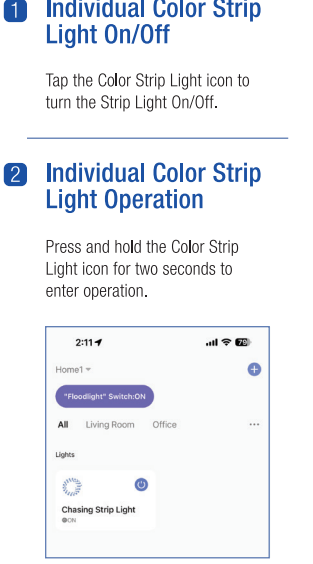
Alternative Set-up Method AP Mode



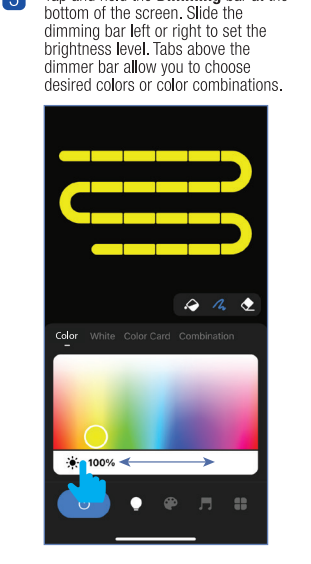
Alternative Set-up Method AP Mode



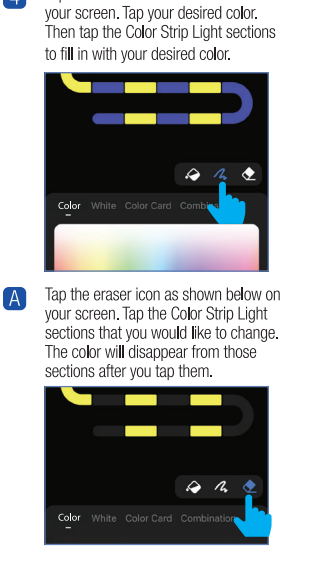
Features



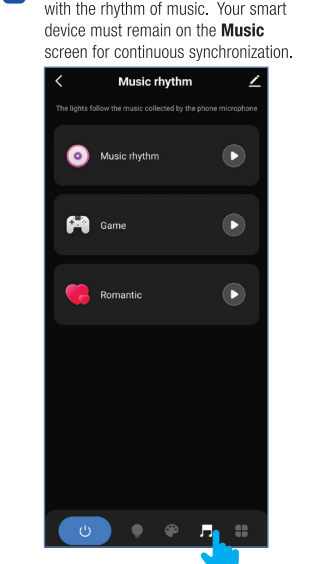
Features



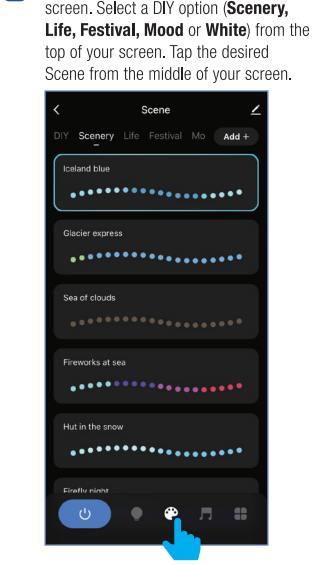
Features



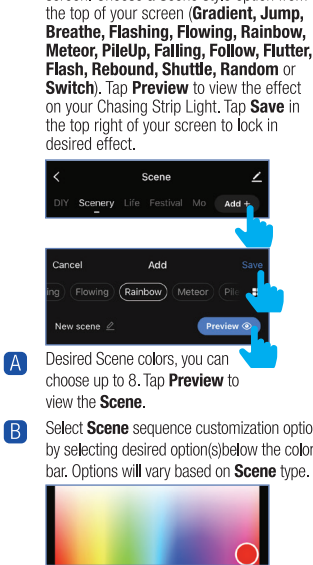
Features



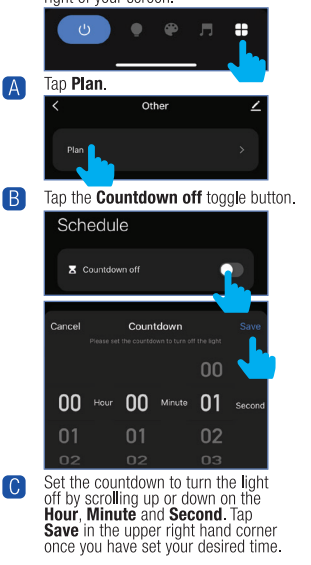
Scene



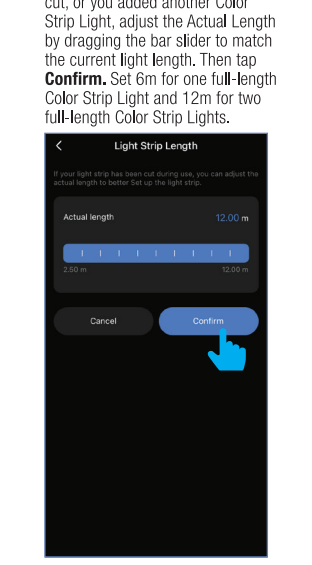
Scene



Scene



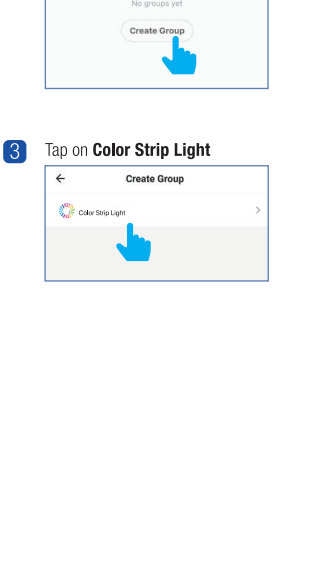
Scene



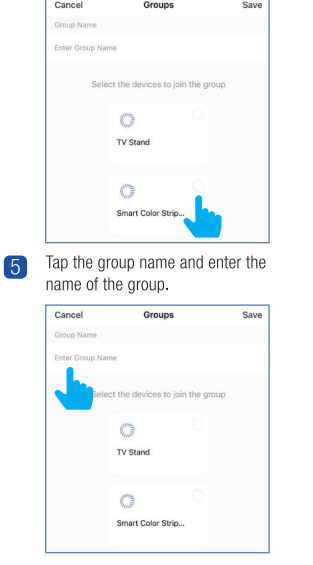
Scene



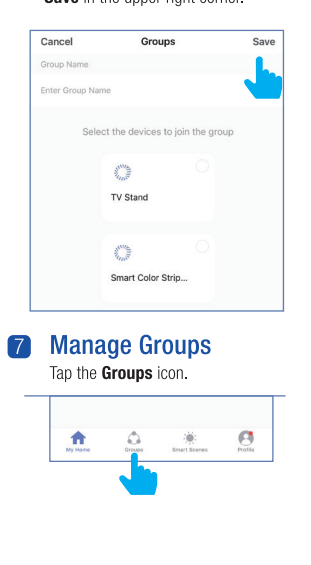
Scene



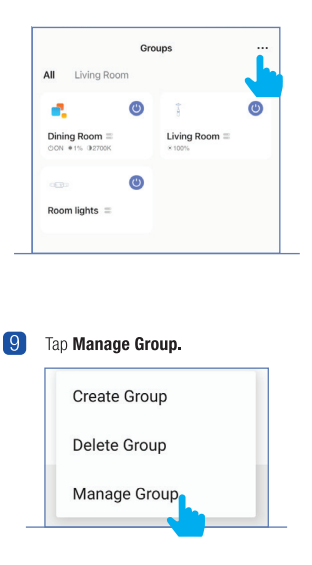
Scene



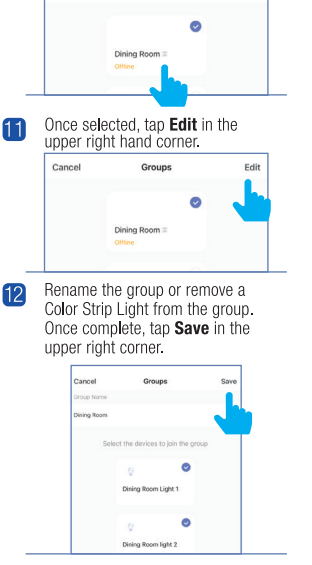
Scene



Scene

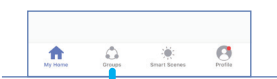


Scene

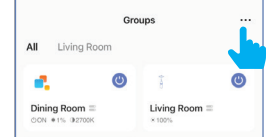


13 Delete Groups

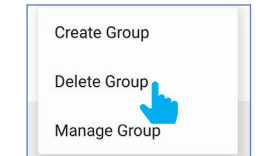
Tap the **Groups** icon.



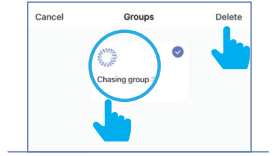
14 Tap the context menu in the upper right corner (⋮).



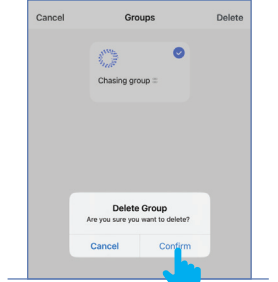
15 Tap **Delete Group**.



16 Select the group to delete. Once selected, tap **Delete Group** in the upper right corner.

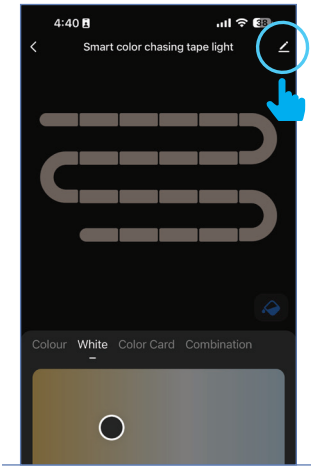


17 Tap **Confirm**.

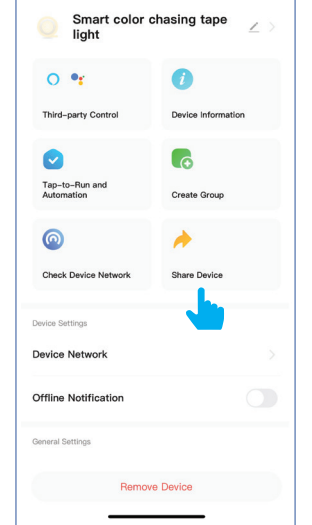


2 Share Control of a Device

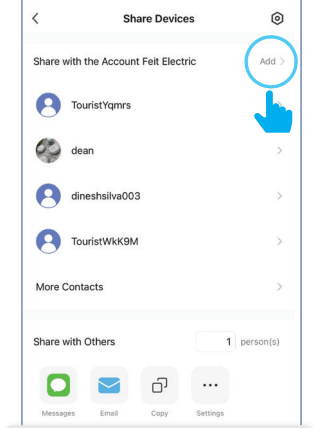
1 Tap on the top right corner.



2 Click Share Device



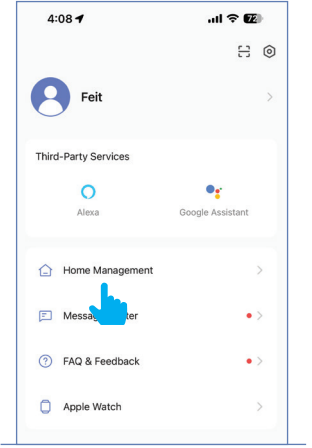
3 Tap Add



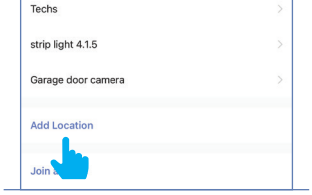
NOTE: New members must set up an account before sharing is possible.

Share Control of All Devices Within a Location

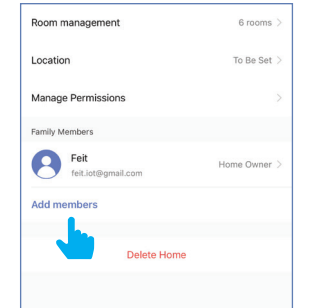
1 Tap Home Management



2 Tap Add Location

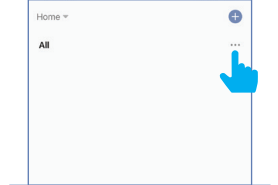


3 Tap Add Members

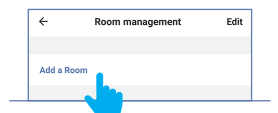


Room Management

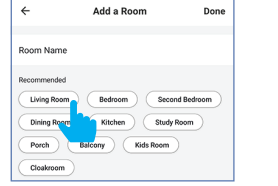
1 Tap the three dots from the home menu, then tap **Room Management**.



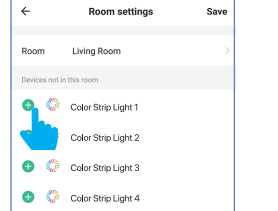
2 Tap **Add a Room**.



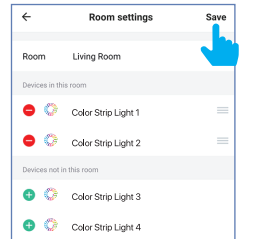
3 Tap on a preset room name or create your own.



4 Add individual lamps by tapping on the icon (+) next to each Color Strip Light's name.

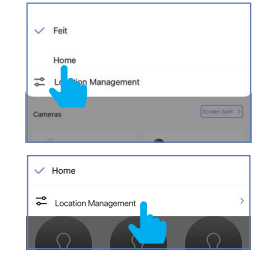


5 Remove individual Color Strip Lights by tapping on the icon (-) next to each Color Strip Lights' name.

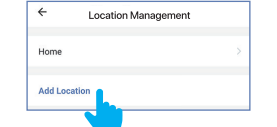


Home Management

1 Tap **Home** from the main menu, then tap **Location Management**.

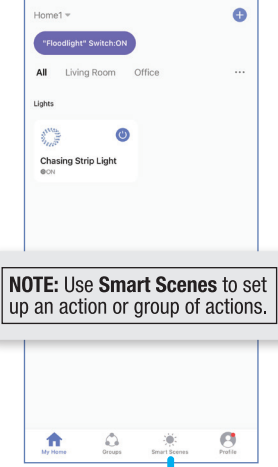


2 Tap **Add Location** to indicate where the bulbs are located.



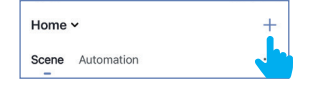
Smart Scenes

1 From the **My Home** page, tap **Smart Scenes** at the bottom of screen.

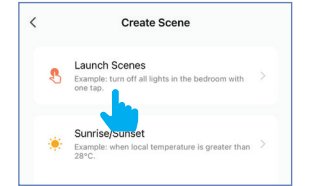


NOTE: Use Smart Scenes to set up an action or group of actions.

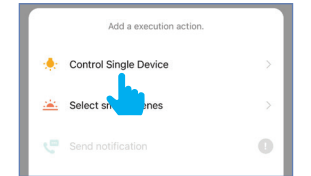
2 In the **Smart Scenes** tab, tap the plus icon (+).



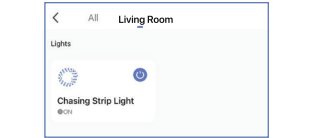
3 Tap on **Launch Scenes**.




4 Tap on **Control Single Device**.



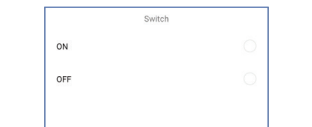
5 Select your device to initiate an action.



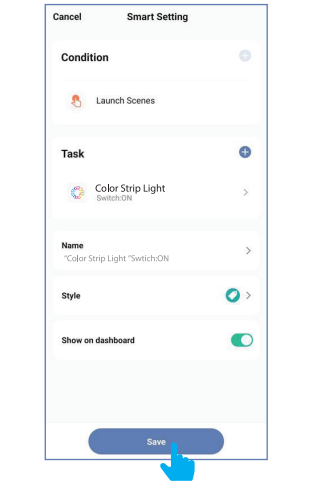
6 On the **Select Function** screen, tap on the action you want the device to perform.



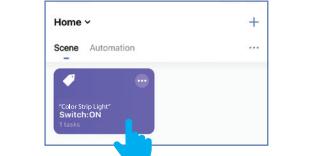
A On the Switch screen, tap On or Off.



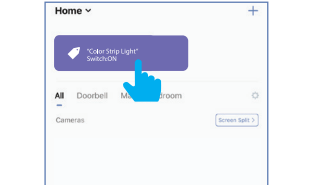
7 Review your scene, edit them if necessary, then **Save**.



8 Your action(s) will appear under **Scene** tab.

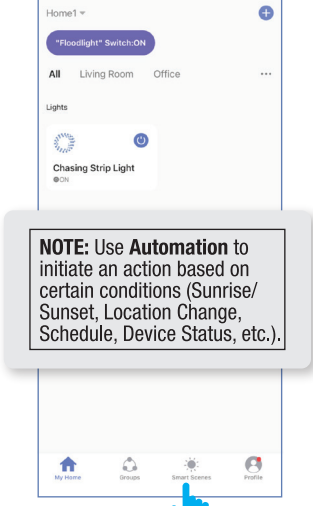


A It will also appear on the top of your **My Home** screen. Tap to execute your action(s).




Automation

1 From the **My Home** page, tap **Smart Scenes** at the bottom of screen.

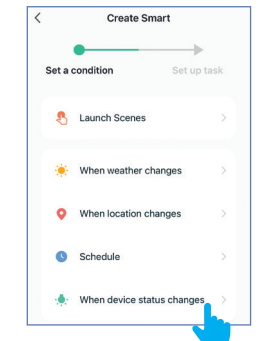


NOTE: Use Automation to initiate an action based on certain conditions (Sunrise/Sunset, Location Change, Schedule, Device Status, etc.).

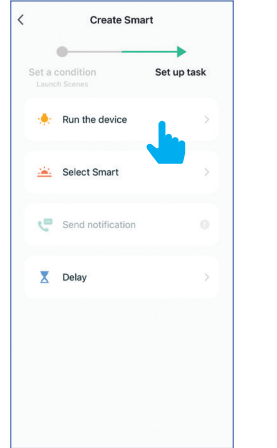
2 Tap **Automation** at the top of the screen, and then tap on plus icon (+).



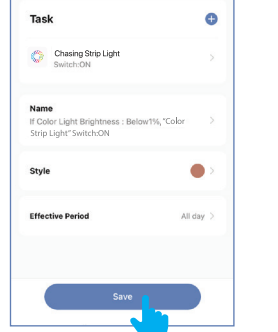
3 Set a **condition** you would like to trigger.



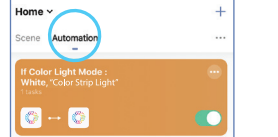
4 Set up a **task** you would like to automate.



5 Review your automations, edit them if necessary, then **Save**.

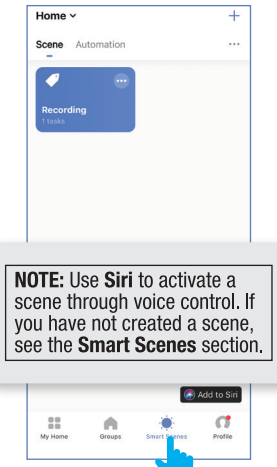


6 Your automation will appear under the **Automation** tab.



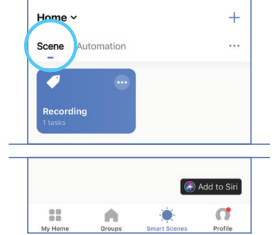
Enable Siri Shortcuts®
(for use with iPhone)

1 From the **My Home** page, tap **Smart Scenes** at the bottom of screen.

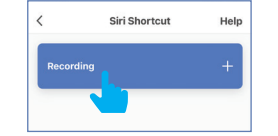


NOTE: Use Siri to activate a scene through voice control. If you have not created a scene, see the **Smart Scenes** section.

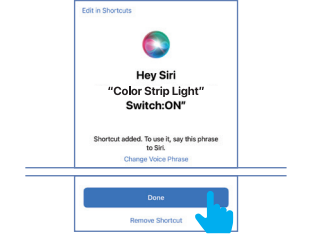
2 In the **Scene** tab, tap **Add to Siri** located at the bottom of the screen.



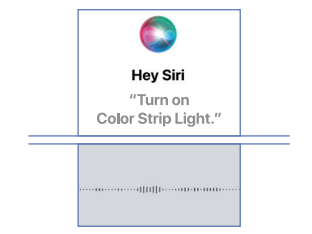
3 In the **Siri Shortcut** screen, tap on the action you would like to add to **Siri**.



4 On the **"Hey Siri"** screen, tap on the device name to edit it. Tap **Done** at the bottom of the screen.

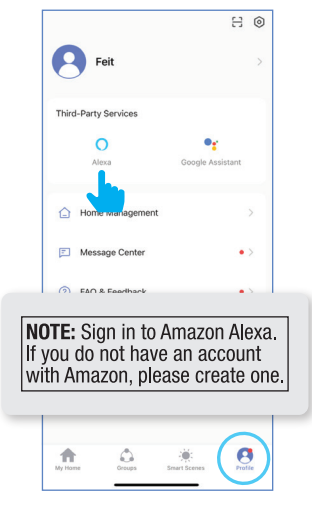


5 Now you can use the **"Hey Siri"** command to control this action from your iOS device. **"Hey Siri, turn on Color Strip Light."**




CONNECT TO ALEXA

1 Tap on **Profile** at bottom right. Tap on **Alexa**.

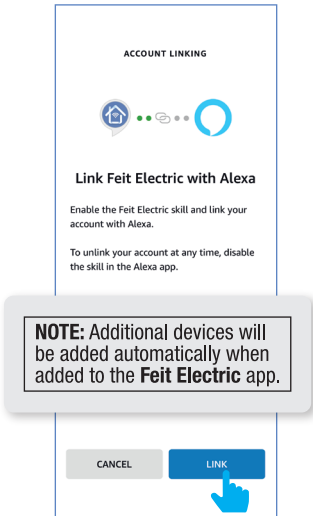


NOTE: Sign in to Amazon Alexa. If you do not have an account with Amazon, please create one.

2 Tap on **Link with Amazon Alexa**.



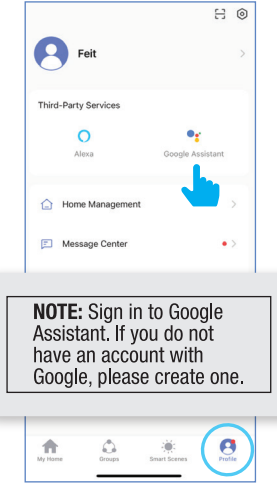
3 Tap on **Link**. You will be linked automatically to your Amazon Alexa app.



NOTE: Additional devices will be added automatically when added to the **Feit Electric** app.

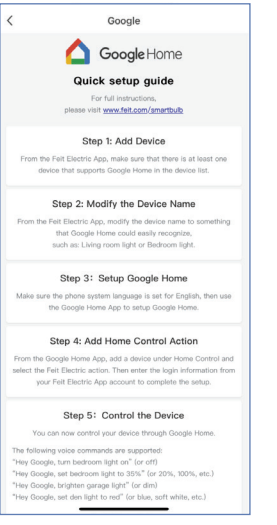
CONNECT TO GOOGLE ASSISTANT

1 Tap on **Profile** bottom right. Tap on **Google Assistant**.



NOTE: Sign in to Google Assistant. If you do not have an account with Google, please create one.

2 Follow the instructions to activate Google Home. You can also add the device directly in the Google Home app and link the Feit Electric app from there.



Need Help?

Please refer to our online resources at www.feit.com/help to learn about more features & latest updates

