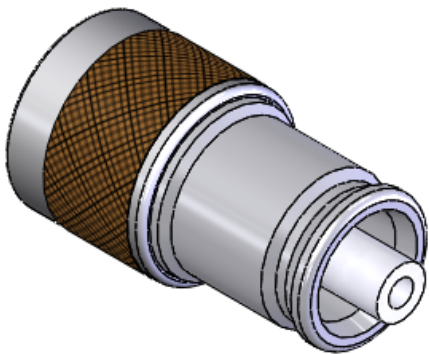
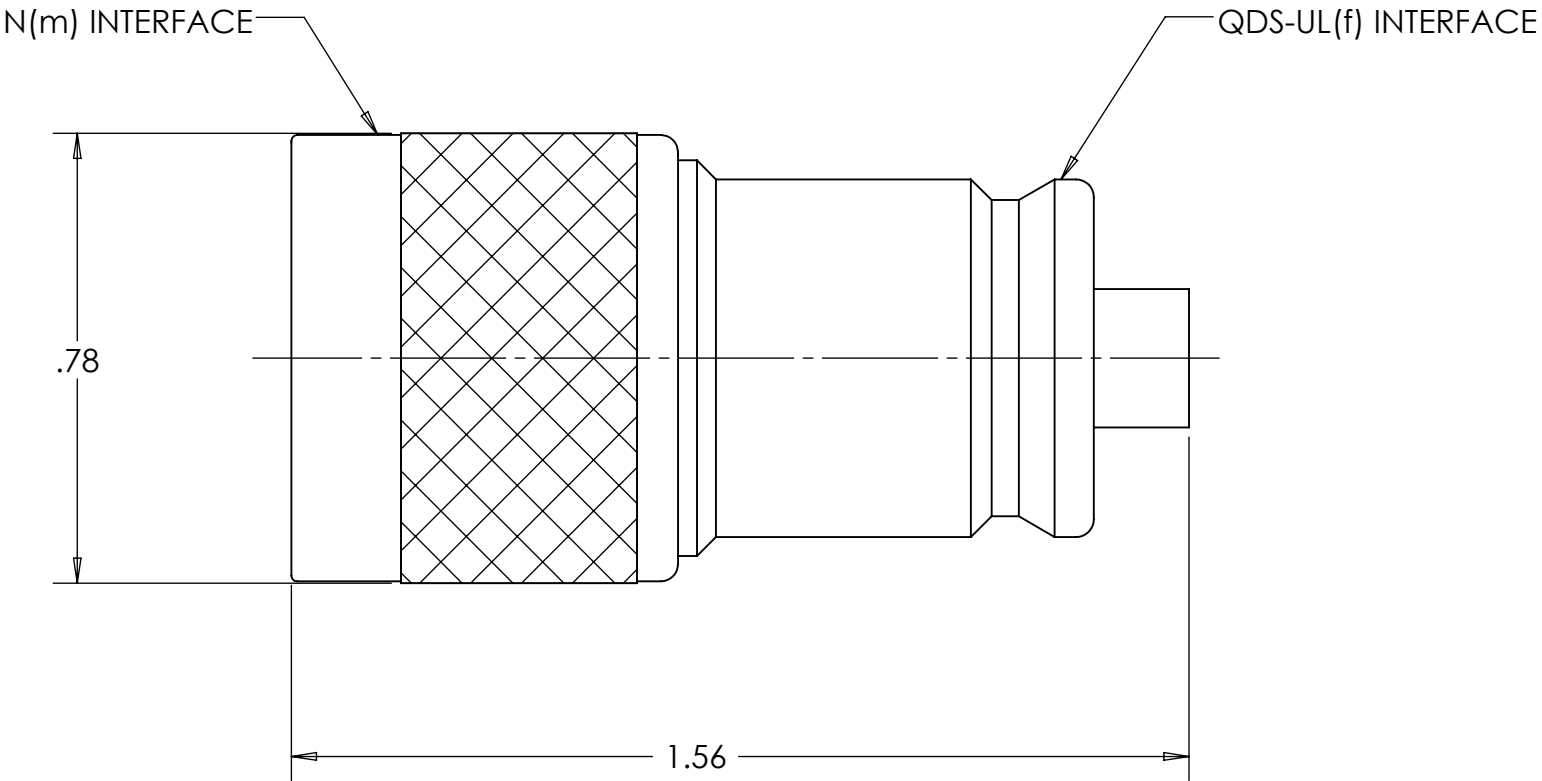


This document, including the design, configuration and mechanical features revealed herein are the sole, confidential and proprietary property of TRU Corporation. Reproduction or use thereof, in whole or part, is prohibited without the prior written consent of TRU Corporation.

REV.	DESCRIPTION	DATE	APPROVED
-	ORIGINAL ISSUE	10/11/11	TRC



ISOMETRIC VIEW  
SCALE 1.5:1





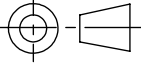
ENGINEERING DATA:

MECHANICAL:  
INTERFACE: N(m) PER MIL-STD-348A, FIG. 304-1  
QDS-UL(f) PER TRU SPEC

MATERIAL:  
INSULATORS: TEFLON  
GASKET: SILICONE RUBBER  
CONTACT: BERYLLIUM COPPER  
OTHER METAL PARTS: BRASS

FINISH:  
CONTACT: NICKEL PLATED  
OTHER METAL PARTS: NICKEL PLATED

NOTES:  
1. UNLESS OTHERWISE SPECIFIED; ALL  
DIMENSIONS ARE REFERENCE ONLY.  
  
2. PRODUCT COMPLIES WITH  
ROHS DIRECTIVE 2002/95/EC

MATERIAL	DO NOT SCALE DRAWING	DRAWN TRC	DATE 09/29/11	 <b>TRU Corporation</b> 245 Lynnfield St, Peabody, MA 01960	
	UNLESS OTHERWISE SPECIFIED: DIMENSIONS ARE IN INCHES	ENG APPR. TM	DATE 10/7/11		
	TOLERANCES: FRACTIONS: $\pm 1/64$ .XX : $\pm .01$ .XXX: $\pm .005$ ANGLES: $\pm 1/2^\circ$ MACHINED SURFACES: 	MFG APPR.	DATE	TITLE: CONNECTOR, COAXIAL, RF N(m) to QDS-UL(f) ADAPTER, STRAIGHT	
	COMMENTS:	OTHER APPR.	DATE	SIZE <b>B</b>	DWG. NO. TRU-11796
surface area: sq inch		weight: lbs		CAGE CODE: 92180	SCALE: 3:1
		THIRD ANGLE PROJECTION 		SHEET 1 OF 1	