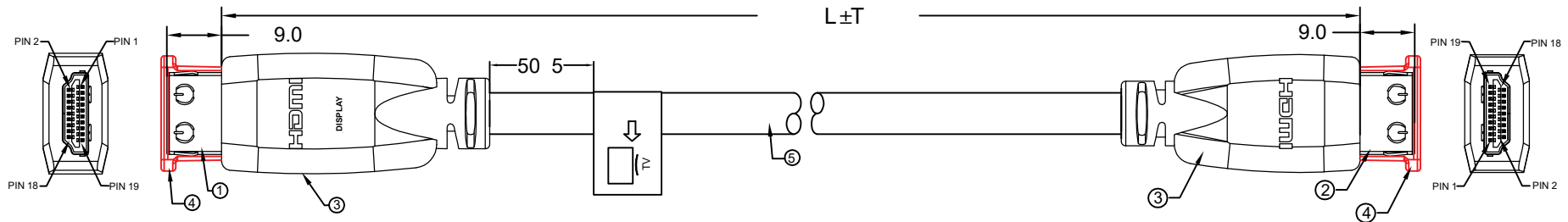


# HD-25AST - HD-50AST



Electric Testing:  
 1: 100% 4K/60HZ TV+Simplay Labs;  
 2: ICT Testing: RT8000 Numerical value:  
 18Gbps / 56%

Model#	L±T
HD-25AST	7600±100 (25ft)
HD-30AST	9000±100 (30ft)
HD-35AST	10660±100 (35ft)
HD-50AST	15000±100 (50ft)

ITEM	SPECIFICATION
4	{[(1/0.324Bc+HDPE)*1P+1/0.324Tc+AL/Mylar]*4P+[(1/0.324Bc+HDPE)*1P+((1/0.203Bc+HDPE)*1C+AL/Mylar)*1P+(1/0.203Bc+Foamed-PE)*3C+(1/0.324Bc+HDPE)*1C+Filler+AL Mylar+16/13/0.10(85%)Tc Braid]*1C OD=7.5 0.15MM Jacket=Black PVC Jacket with White Text :High Speed HDMI R(logo) Cable With Ethernet E148115-D (UL) c(UL) TYPE CL2 SHIELDED 75!C FT4 28AWG/11C+32AWG/4C (CTI:C16S1310-3)
3	Plastic Cap-Transparent(2312110024)
2	PVC - Black 60P (31401012060 YT-3411/3581 & YT-3492 / YT-3493)
1	HDMI C-grip Plug - Gold Plated (3033700ACG)
1	HDMI C-grip Plug - Gold Plated(Pin 15u" Gold) (3033700AAG with HT8181 IC)

TOLERANCES UNLESS OTHERWISE STATED  
 X. = 1  
 .X = 0.2  
 .XX = 0.1

