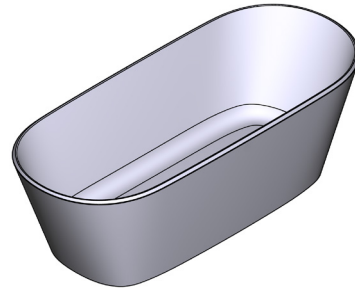


# SPECIFICATIONS



## VETRALLA™

70" x 30" Freestanding Soaking Bathtub

**MODELS:** VE3-N-SW-NO, VE3M-N-SM-NO

**SHAPE**

- Oval

**SIZE**

- Length: 70" (1778 mm), Width: 29-3/4" (755 mm), Height: 22" (559mm)

**MATERIAL**

- Volcanic Limestone

**DRAIN HOLE**

- Centered

**WEIGHT**

- 172 lbs. (78 kg)

**CAPACITY**

- 119 gallons (451 Liters)

**INSTALLATION TYPE**

- Freestanding

**DRAIN SET**

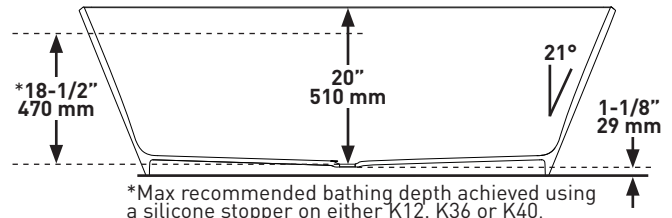
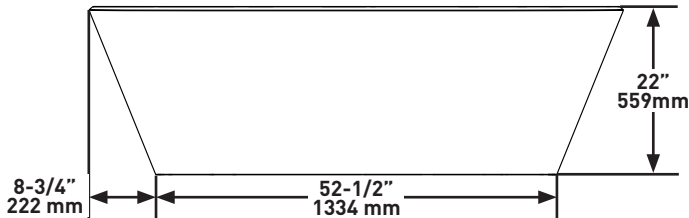
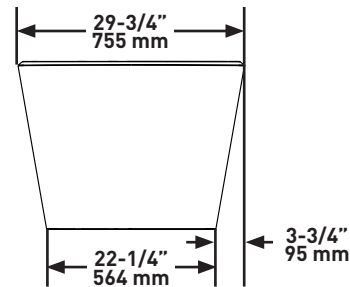
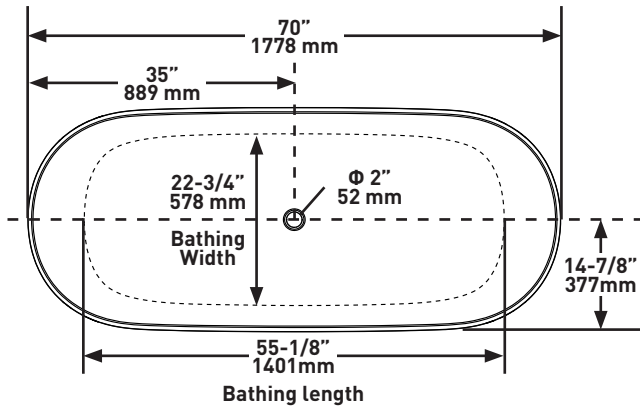
- Drain kit required and sold separately, Order either K12, K36 or K40 to ensure the performance and look is in line with Victoria + Albert standards

**STANDARDS**

- CSA B45.5 / IAPMO Z124

**WARRANTY**

- Most products or parts carry "Limited Warranties" against manufacturing defects. For US customers please visit [houseofrohl.com/support](http://houseofrohl.com/support) and for Canadian customers please visit [houseofrohl.ca/support](http://houseofrohl.ca/support) for complete product and finish warranty.



**For warranty or additional information, contact:**

U.S.A.  
[houseofrohl.com/support](http://houseofrohl.com/support)  
 1-800-777-9762

QUEBEC / MARITIMES / WESTERN CANADA  
 QUÉBEC / MARITIMES / OUEST CANADIEN  
 QUEBEC / MARITIMOS / CANADA OCCIDENTAL  
[houseofrohl.ca/support](http://houseofrohl.ca/support)  
 1-866-473-8442

ONTARIO  
[houseofrohl.ca/support](http://houseofrohl.ca/support)  
 1-800-287-5354

## SPÉCIFICATIONS

## FORME

- Ovale

## DIMENSIONS

- Longueur: 70 po(1778 mm), Largeur : 29-3/4 po(755 mm), Hauteur : 22 po(559 mm)

## MATÉRIAU

- Pierre calcaire volcanique blanche

## ORIFICE D'ÉVACUATION

- Centré

## POIDS

- 78 kg (172 lb)

## CAPACITÉ

- 451 litres (119 gallons)

## TYPE D'INSTALLATION

- Autonome

## ASSEMBLAGE DE DRAIN

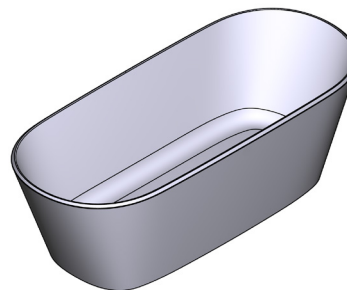
- La trousse de bonde est requise et vendue séparément; commander la trousse K12, K36 ou K40 pour veiller à ce que le rendement et le style du produit correspondent aux normes Victoria + Albert en la matière.

## CERTIFICATIONS

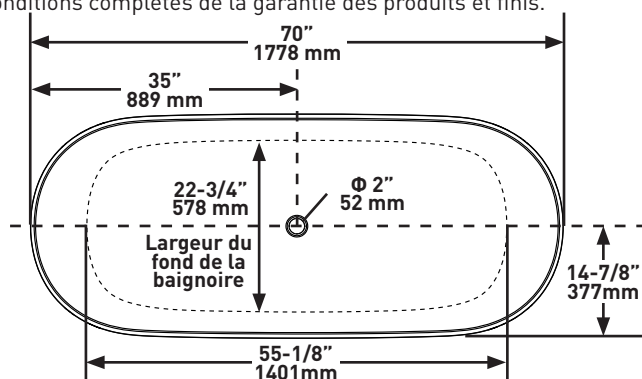
- CSA B45.5 / IAPMO Z124

## GARANTIE

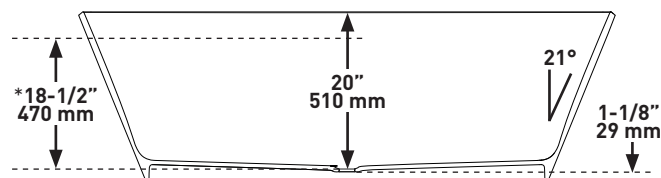
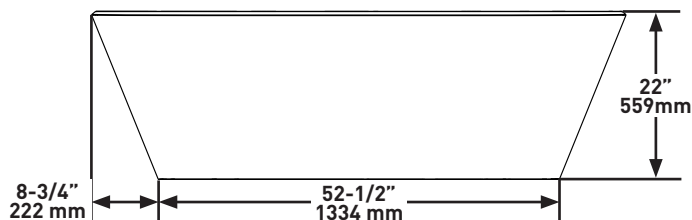
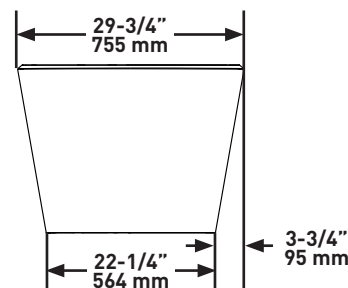
- La plupart des produits ou pièces comprend des «garanties limitées» contre les défauts de fabrication. Pour les clients des États-Unis : veuillez consulter [houseofrohl.com/support](http://houseofrohl.com/support); Pour les clients du Canada : veuillez consulter [houseofrohl.ca/support](http://houseofrohl.ca/support) pour connaître les conditions complètes de la garantie des produits et finis.

VETRALLA<sup>MC</sup>

Baignoire autoportante 70" x 30"

**MODÈLES :** VE3-N-SW-NO, VE3M-N-SM-NO

Longueur du fond de la baignoire



\*Le niveau de l'eau maximal recommandé peut être assuré par l'utilisation d'un bouchon en silicone avec les bords K12, K36 ou K40.

Si vous souhaitez obtenir de l'information supplémentaire à propos de la garantie ou de tout autre élément, communiquez avec :

U.S.A.  
[houseofrohl.com/support](http://houseofrohl.com/support)  
 1-800-777-9762

QUEBEC / MARITIMES / WESTERN CANADA  
 QUÉBEC / MARITIMES / OUEST CANADIEN  
 QUEBEC / MARITIMES / CANADA OCCIDENTAL  
[houseofrohl.ca/support](http://houseofrohl.ca/support)  
 1-866-473-8442

ONTARIO  
[houseofrohl.ca/support](http://houseofrohl.ca/support)  
 1-800-287-5354

**FORMA**

- Ovalado

**TAMAÑO**

- Largo: 70" (1778 mm), Ancho: 29-3/4" (755mm),  
Altura: 22" (559 mm)

**MATERIAL**

- Piedra caliza volcánica

**AGUJERO DEL DESAGÜE**

- Centrado

**PESO**

- 172 lb (78 kg)

**CAPACIDAD**

- 119 galones (451 litros)

**TIPO DE INSTALACIÓN**

- Sobrepuesta

**JUEGO DE DESAGÜE**

- El kit de drenaje requerido se vende por separado. Ordene el kit K12, K36 o K40 para asegurar que el rendimiento y el estilo correspondan con los estándares Victoria + Albert.

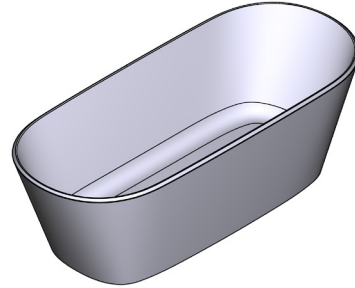
**ESTÁNDARES**

- CSA B45.5 / IAPMO Z124

**GARANTÍA**

- La mayoría de los productos o piezas cuentan con "Garantías Limitadas" por defectos de fabricación. A los clientes en EE. UU. se les recomienda visitar [houseofrohl.com/support](http://houseofrohl.com/support) y a los clientes en Canadá, [houseofrohl.ca/support](http://houseofrohl.ca/support), para consultar las condiciones completas de la garantía de los productos y acabados.

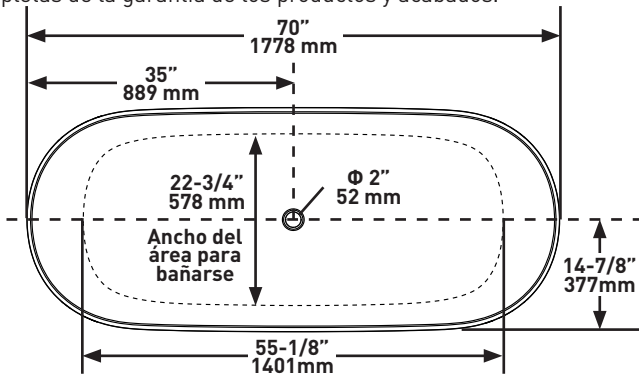
**ESPECIFICACIONES**



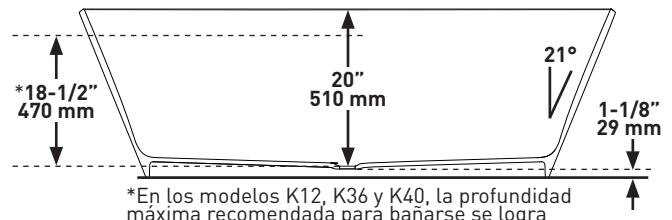
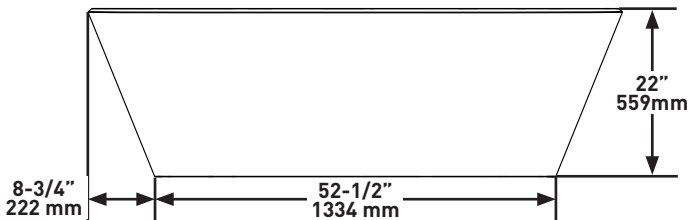
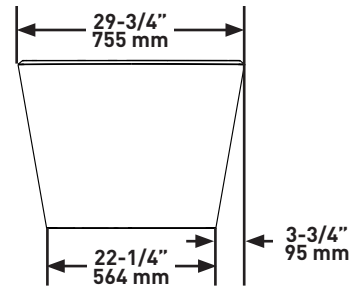
**VETRALLA™**

Tina de baño sobrepuesta de 70" x 30"

**MODELOS:** VE3-N-SW-NO, VE3M-N-SM-NO



Longitud del fondo de la bañera



\*En los modelos K12, K36 y K40, la profundidad máxima recomendada para bañarse se logra utilizando un tapón de silicón.

Para preguntas sobre la garantía o para obtener más información, favor de comunicarse con:

U.S.A.  
[houseofrohl.com/support](http://houseofrohl.com/support)  
1-800-777-9762

QUEBEC / MARITIMES / WESTERN CANADA  
QUÉBEC / MARITIMES / OUEST CANADIEN  
QUEBEC / MARITIMOS / CANADA OCCIDENTAL  
[houseofrohl.ca/support](http://houseofrohl.ca/support)  
1-866-473-8442

ONTARIO  
[houseofrohl.ca/support](http://houseofrohl.ca/support)  
1-800-287-5354