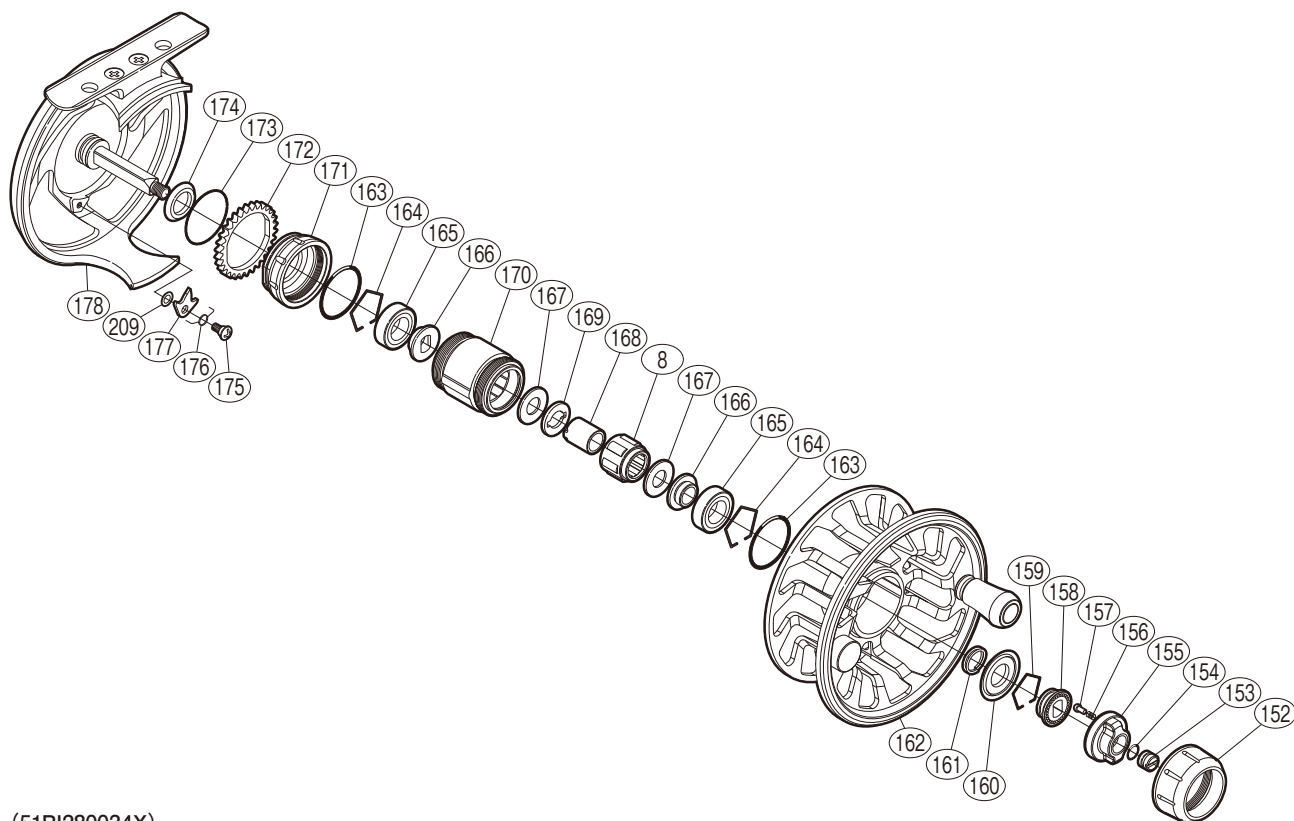


SHIMANO

Asquith

ASQ-34



(51RI280034X)

#	Part No.	Description	#	Part No.	Description	#	Part No.	Description
8	10P66	Roller Clutch	161	10TNE	Drag Coil Spring	171	10R1D	Spool Cap B
152	10R1B	Spool Cap A	162	10DP4	Spool Assembly	172	10R1U	Click Gear
153	10TPM	Drag Shaft Nut	163	10R17	O Ring	173	10R1W	Click Gear Retainer
154	10TM7	O Ring	164	10TMA	Spool Holder Retainer	174	10R0V	Back Plate Seal
155	10R3E	Drag Knob	165	104PT	Ball Bearing	175	10PH4	Screw
156	10BT2	Click Spring	166	10R1Y	Key Washer A	176	10JM6	Click Spring
157	10BT0	Click Pin	167	10R15	Drag Washer	177	10TNU	Drag Click
158	10R20	Drag Knob Disc	168	10TMR	Roller Clutch Inner Tube	178	10DLS	Frame
159	10R21	Drag Knob Retainer	169	10R24	Key Washer B	209	10K9C	Washer
160	10TNG	Drag Knob Seal	170	10R41	Spool Holder			

Please note that the number of adjusting washers may not be the same as shown in the exploded views.
(Adjustment will vary with each individual product.)

(241029)_005