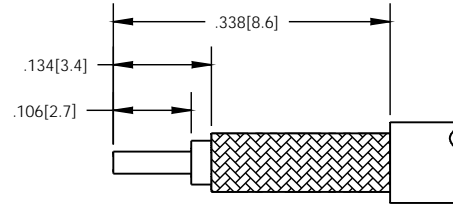


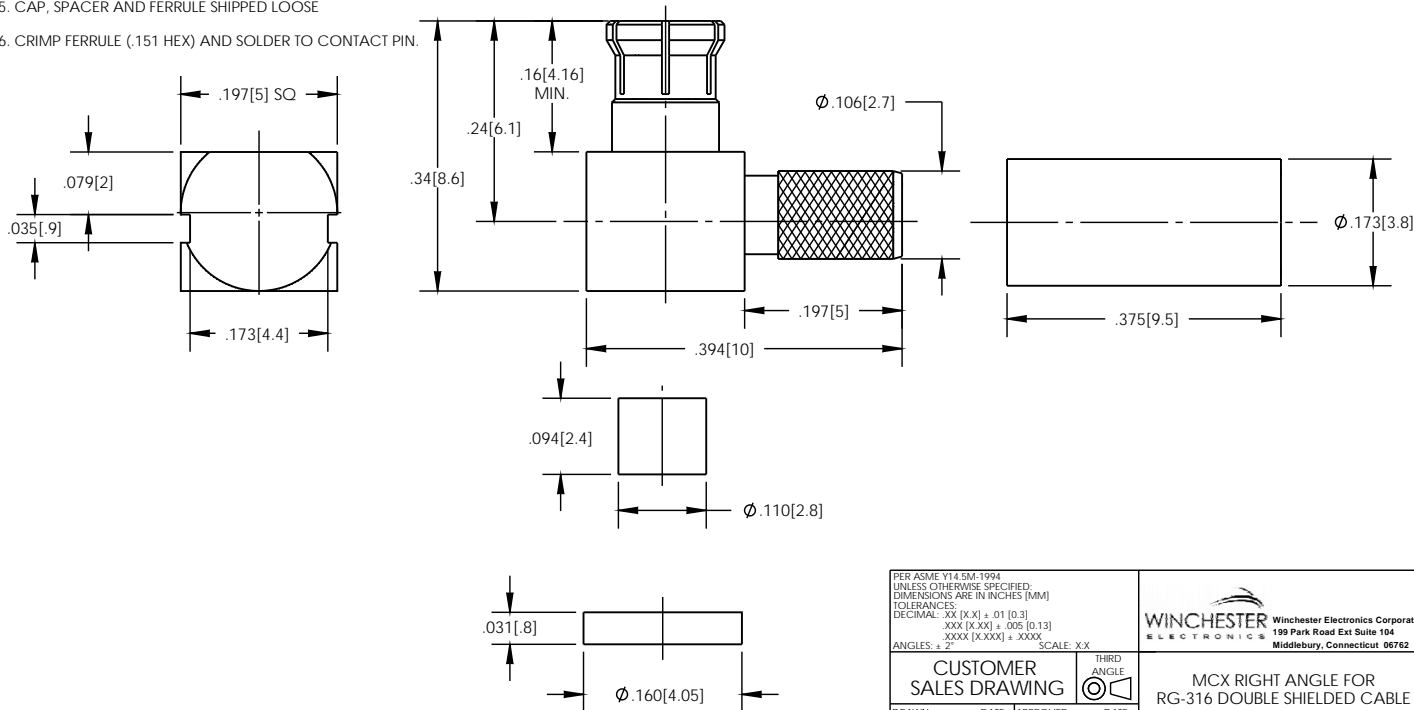
NOTES: UNLESS OTHERWISE SPECIFIED

- FOR USE WITH RG-316 DOUBLE SHIELDED OR EQUIVALENT
- MATERIAL SPECIFICATIONS:
INSULATORS: TEFLON, COLOR : NATURAL
SPACER: DELIN , COLOR: NATURAL
OUTER CONTACT: BERYLLIUM COPPER
ALL OTHER METAL PARTS: BRASS
- FINISH SPECIFICATIONS:
CONTACT: .000003 MIN THICK GOLD OVER .000050 MIN THICK NICKEL
ALL OTHER METAL: THIN GOLD OVER .000050 MIN THICK COPPER
- ELECTRICAL SPECIFICATIONS:
IMPEDANCE: 50 OHMS
FREQUENCY RANGE: DC TO 6 GHz
VSWR: 1.5 MAX
- CAP, SPACER AND FERRULE SHIPPED LOOSE
- CRIMP FERRULE (.151 HEX) AND SOLDER TO CONTACT PIN.

REV	DESCRIPTION	BY DATE	APPD
A	ER054784	MS 09/05/14	MS MAR



RECOMMENDED
CABLE STRIPPING DIMS



PER ASME Y14.5M-1994
UNLESS OTHERWISE SPECIFIED,
DIMENSIONS ARE IN INCHES (MM)
TOLERANCES:
DECIMAL: .XX [XX] ± .01 [0.3]
XXX [XXX] ± .005 [0.13]
XXXX [XXXX] ± .000X
ANGLES: ± 2° SCALE: XX

CUSTOMER SALES DRAWING

DRAWN	DATE	APPROVED	DATE
MS	09/05/14	MS	09/05/14
APPROVED	DATE	APPROVED	DATE
XXX	XX/XX/XX	XXX	XX/XX/XX

WINCHESTER Winchester Electronics Corporation
ELECTRONICS 199 Park Road Ext Suite 104
Middlebury, Connecticut 06762

**MCX RIGHT ANGLE FOR
RG-316 DOUBLE SHIELDED CABLE**

A	1213A204MS	SHT	OF	REV
		1	1	A