



# THIN SHADE™

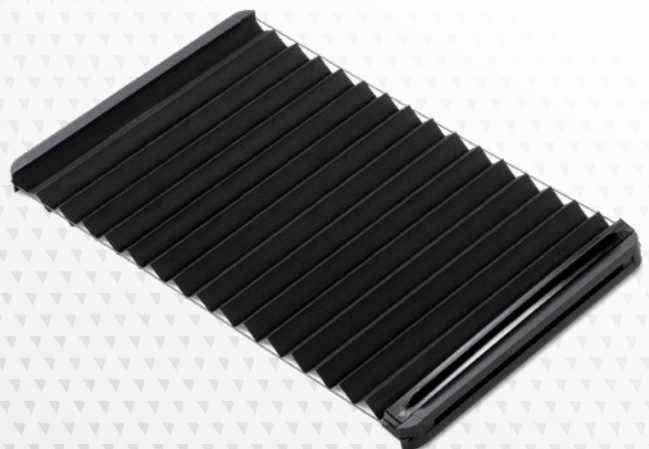
## RV ENTRY DOOR SHADE SOLUTIONS



### READY FOR A BETTER SHADE SOLUTION?

Are you one of the millions of RVers without an entry door shade solution? Prevent sunlight and heat from entering through your RV entry door window and add instant privacy to your home on wheels with the Thin Shade Complete Kit or the Thin Shade Ready Kit for prepped entry doors. The Thin Shade keeps the sun's rays out of your RV living space, helping to regulate the interior temperature and to create instant privacy.

**Whenever, wherever, we  
make your experience better.**



## TWO EASY INSTALLATION METHODS

### Thin Shade Complete kit



Meet the Thin Shade Complete kit, the only window and blind combination of its kind. Close it for shade and privacy on the inside of your RV, or open it for a clear, enjoyable view outside. For use with Lippert entry doors only

### Thin Shade Ready kit



The revolutionary Thin Shade Ready kit is a pleated window shade that's seamlessly integrated into your RV entry door window frame. Lippert has already prepped more than 100,000 RVs for the Thin Shade Ready, just look for the "Thin Shade Ready" decal on your window.

### Additional Features

- Uniquely designed blind embedded in frame
- Blocks out sun and keeps inside temps cool
- Added privacy at campsites
- Easy to install
- Easy to adjust horizontal blind
- Kit includes: Tinted glass window, black exterior and interior window frame, horizontal blind and hardware
- Window frame measures 24.72" x 15.72"
- Window glass measures 23.72" x 14.72"
- Weight: 8.2 lbs.
- For use on Lippert™ entry doors only
- Made in the USA



806621

### Additional Features

- Blocks the sun's rays from entering your RV interior
- Helps regulate the interior RV temperature
- Creates privacy when needed
- Integrated into the RV door window frame; other shades and reflectors need to be taken off and put back on when not in use
- Easy extend and retract operation; no cords to get tangled or knotted
- Quick and easy installation into only Thin Shade Prepped RV entry doors by Lippert™; no need to replace the entire RV entry door window
- Not compatible with non-prepped RV doors or non-Lippert™ RV entry doors
- Made in the USA



786037

Part #	Description	Includes
806621	Thin Shade complete window kit for RV entry doors	Window frame, window glass, integrated window shade, window clips (16), installation manual
786037	Thin Shade ready window shade for prepped Lippert RV entry doors	Window shade prep kit