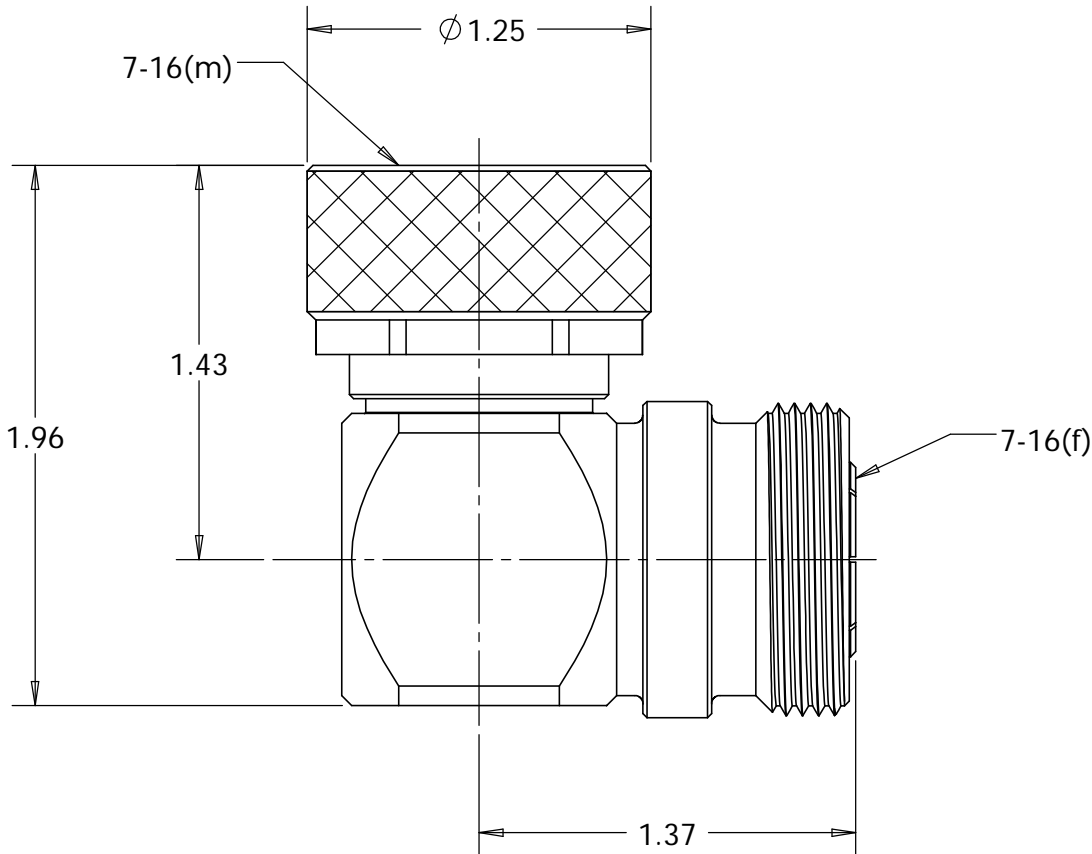
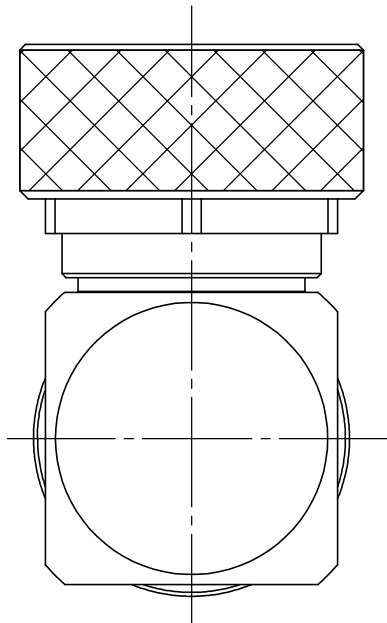
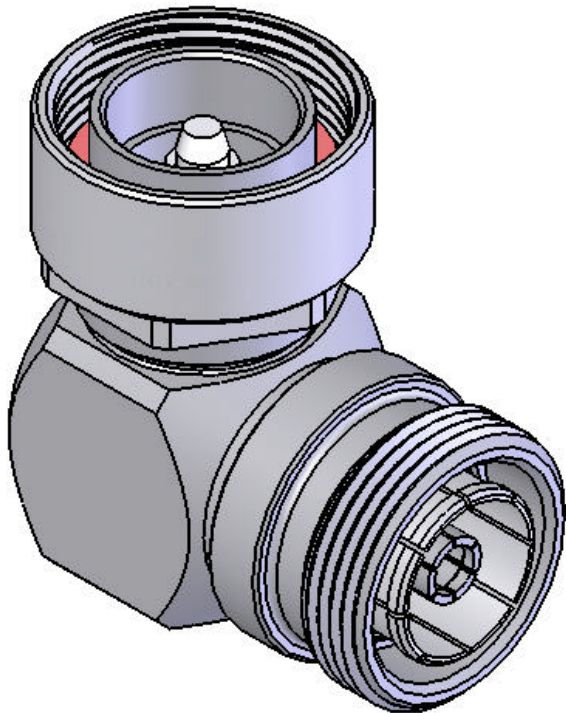


This document, including the design, configuration and mechanical features revealed herein are the sole, confidential and proprietary property of TRU Corporation. Reproduction or use thereof, in whole or part, is prohibited without the prior written consent of TRU Corporation.

REV.	DESCRIPTION	DATE	APPROVED
-	ORIGINAL ISSUE	8/13/07	WWW



ENGINEERING DATA:

ELECTRICAL:
IMPEDANCE: 50 OHMS NOMINAL


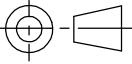
MECHANICAL:
INTERFACE: 7-16 PER IEC 169-4, & DIN 47223

MATERIAL:
INSULATORS: PTFE (TEFLON) PER ASTM-D1710, I1A
FEMALE CONTACT: BERYLLIUM COPPER C17300, TD04 (H) PER ASTM-B196
CONTACT FINGERS: PHOSPHOR BRONZE PER QQ-B-750 COMP. B
OTHER METAL PARTS: BRASS C36000, H02 PER ASTM-B16

FINISH:
CONTACTS: SILVER PLATED
OTHER METAL PARTS: NICKEL PLATED

NOTES:
1. UNLESS OTHERWISE SPECIFIED; ALL
DIMENSIONS ARE REFERENCE ONLY.

2. PRODUCT COMPLIES WITH ROHS DIRECTIVE 2002/95/EC.

MATERIAL	DO NOT SCALE DRAWING	DRAWN Warren Whitten	DATE 7/31/07	<div> TRU CORPORATION 245 LYNNFIELD STREET, PEABODY, MA 01960 <small>The Custom Interconnect Leader™</small></div> <div>TITLE: CONNECTOR, COAXIAL, RF 7-16(f-m) ADAPTER, R/A</div>		
	UNLESS OTHERWISE SPECIFIED: DIMENSIONS ARE IN INCHES	ENG APPR. AM	DATE 8/9/07			
	TOLERANCES: FRACTIONS: $\pm 1/64$.XX : $\pm .01$.XXX: $\pm .005$ ANGLES: $\pm 1/2^\circ$ MACHINED SURFACES: <div>$\sqrt{63}$</div>	MFG APPR.	DATE			
	COMMENTS:	OTHER APPR.	DATE			
surface area: sq inch	weight: lbs	THIRD ANGLE PROJECTION 		SIZE B	DWG. NO. TRU-15035	REV -
		CAGE CODE: 92180		SCALE: 1.5:1	SHEET 1 OF 1	