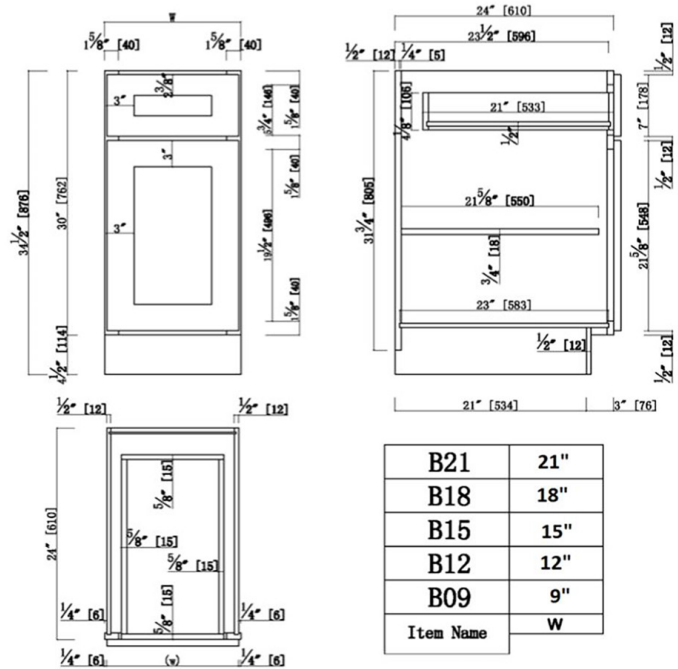


Brookings Fully Assembled Shaker Base Kitchen Cabinet 15x34.5x24

Espresso



SPECIFICATIONS

MATERIAL CONSTRUCTION: Wood
WOOD SPECIES: Maple
ASSEMBLED DIMENSIONS: 34.5" H x 15" L x 24" D
ASSEMBLED WEIGHT: 56.3 lbs.
KITCHEN CABINET TYPE: Base
MOUNTING TYPE: Floor Mount
CONSTRUCTION TYPE: Face Frame
HINGE STYLE: Soft Close
DOOR STYLE: 1 Wood shaker door, reversible
NUMBER OF DRAWERS: 1
DRAWER DIMENSIONS 1: 4.17" H x 21" L x 11.45" D
DRAWER DIMENSIONS 2: N/A
DRAWER DIMENSIONS 3: N/A
DWR BOX MATERIAL: Solid Wood
DWR CONSTRUCTION: Dove Tail
DWR GLIDE: STD Easy Glide
FAKE DWR QTY: 0
FAKE DWR LOCATION: N/A

NUMBER OF SHELVES: 1
SHELF STYLE: Flat
ADJUSTIBLE SHELVES: Yes
SHELF ADJUSTIBILITY INCREMENTS: 2.5"
SHELF DIMENSIONS: 13.5" W x 21.625" D
SHELF THICKNESS: 0.75"
SHELF MATERIAL: Plywood
FACE FRAME MATERIAL: Solid Maple
SIDES MATERIAL: Plywood
BOTTOM MATERIAL: Plywood
BACK PANEL MATERIAL: Plywood
BACK BRACE MATERIAL: Wood
TOE KICK INSET WIDTH: 3

WARRANTY: 1-Year limited warranty
LEGAL FOR SALE IN CALIFORNIA: Yes
CARB COMPLIANT: CARB Phase 2
TSCA TITLE VI COMPLIANT: Yes



TYPE:
JOB:
ORDER CODE:
APPROVALS: