



SINCE 1839

BRINLY

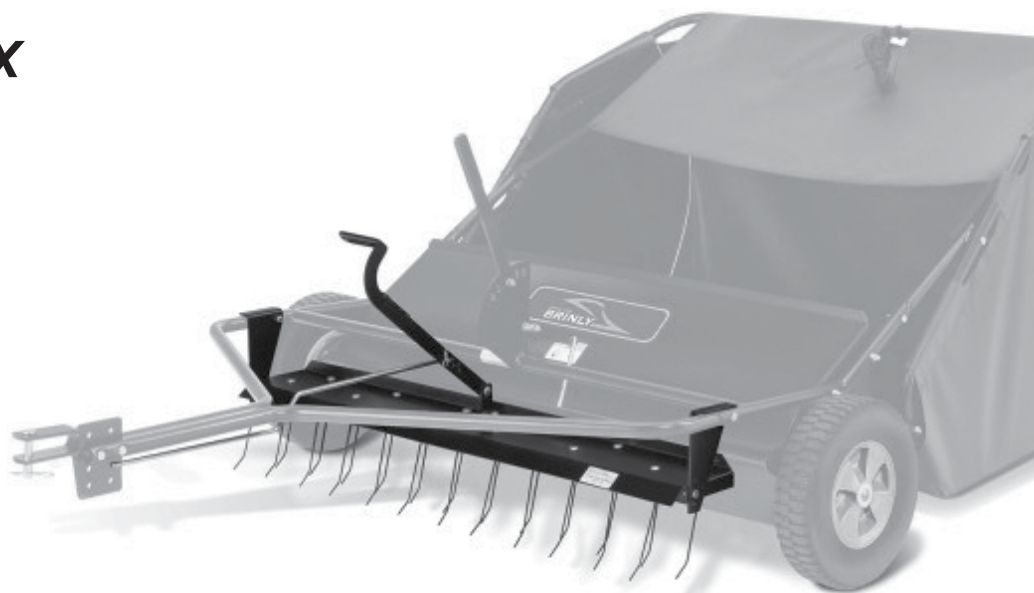
# OWNER'S MANUAL

## ***DETHATCHER KIT***

*MODEL:*

***DK-422LX***

- Assembly
- Installation
- Operation
- Repair Parts



*Scan this QR  
code for additional  
info on the STS-42BHDK  
Sweeper / Dethatcher  
Combo.*

**Call Customer Service, Toll-Free: 877-728-8224**

**Visit us on the web!  
[www.brinly.com](http://www.brinly.com)**

**Important:** This manual contains information for the safety of persons and property. Read it carefully before assembly and operation of the equipment!

# INTRODUCTION

CONGRATULATIONS on the purchase of your new Brinly-Hardy Dethatcher Kit! Your kit has been designed, engineered and manufactured to give you the best possible dependability and performance.

Should you experience any problem you cannot easily remedy, please do not hesitate to contact our knowledgeable customer service department toll-free at 1-877-728-8224. We have competent, well trained technicians to help you with the assembly and use of your product.



## CUSTOMER RESPONSIBILITIES

- Please read & retain this manual. The instructions will enable to assemble and maintain your Sweeper properly.
- Please carefully read and observe the SAFETY SECTION of this manual.
- Follow a regular schedule in maintaining and caring for your Brinly-Hardy product.

## TABLE OF CONTENTS

Introduction, Required Tools, and Safety	2 - 3
Parts	4 - 5
Assembly	6 - 10
USE AND CARE	
Specifications	11
Operation	11 - 12
Maintenance	13
Service	13
Warranty	14

## RECORD PURCHASE INFORMATION

Record your purchase information in the spaces provided below:

Date of Purchase \_\_\_\_\_

Company Name \_\_\_\_\_

Company Phone \_\_\_\_\_

Serial Number \_\_\_\_\_

## REQUIRED TOOLS FOR ASSEMBLY



- 1/2" Wrench (x2)
- Slip Joint Pliers (x1)
- Level
- Tape Measure
- Safety Glasses
- Gloves



This symbol will help to point out important safety precautions throughout this manual.

It means: **ATTENTION! BECOME ALERT!**  
**Your safety is involved.**

The safety labels shown in this section are placed in important areas on your product to draw attention to potential safety hazards.

On your product safety labels, the words DANGER, WARNING and CAUTION are used with the safety-alert symbol. DANGER identifies the most serious hazards.

The operator's manual also explains any potential safety hazards whenever necessary in special safety messages that are identified with the word, CAUTION, and the safety-alert symbol.

# SAFETY AND REFERENCE

## RULES FOR SAFE OPERATION

- Know controls and how to stop quickly, **READ THE OWNER'S MANUAL.**
- Do not allow children to operate the vehicle, do not allow adults to operate without proper instruction or without having read the owner's manual.
- Do not carry passengers. Keep children and pets a safe distance away.
- Always wear substantial footwear. Do not wear loose-fitting clothing that can get caught in moving parts.
- Keep your eyes and mind on your tractor/attachment and area being covered. Do not let other interests distract you.
- Stay alert for holes in the terrain and other hidden hazards.
- Do not drive close to creeks, ditches and public highways.
- Watch out for traffic when crossing or near roadways.
- Before you operate any feature of this attachment or towing vehicle, observe your surroundings and look for bystanders.
- When using any attachment, don't allow anyone near the vehicle while in operation.
- Keep the vehicle and attachment in good operating condition and keep safety devices in place.
- Keep all nuts, bolts and screws tight to be sure the equipment is in safe working condition.
- The vehicle and attachment should be stopped and inspected for damage after striking a foreign object. The damage should be repaired before restarting and operating the equipment.
- See tractor equipment owner's manual for safe operation of the equipment.



**CAUTION!** This product is not designed for use in sand, gravel, or to carry extra weight. Lock nuts must be used where specified. They have a nylon insert in the hole where used. When backing - carefully back straight to avoid jackknifing, which could result in damage to equipment.

## COMPATIBILITY

The DK-422LX Kit is compatible with the following sweeper models:

- |                |               |
|----------------|---------------|
| • STS-42BHDK   | • STDK-422LX  |
| • STS-42BHDK-A | • STDK-423LX  |
| • STS-426LXH   | • STDK-422LXH |
| • LPSTS-42JD   | • STDK-425LXH |
| • STS-422LX    |               |

## OPERATION HINTS

- Remove any large objects (branches, rocks, wood, etc.) from the operation area that are too big to be picked up by Sweeper w/Dethatcher Kit.
- Mow lawn before sweeping, especially when leaves are present.
- For best results, sweep only when conditions are DRY.
- To dump load, carefully back up to pile and pull rope until material is clear of hamper, then drive away from pile. Release rope to return hamper.

## PROTECT THOSE AROUND YOU

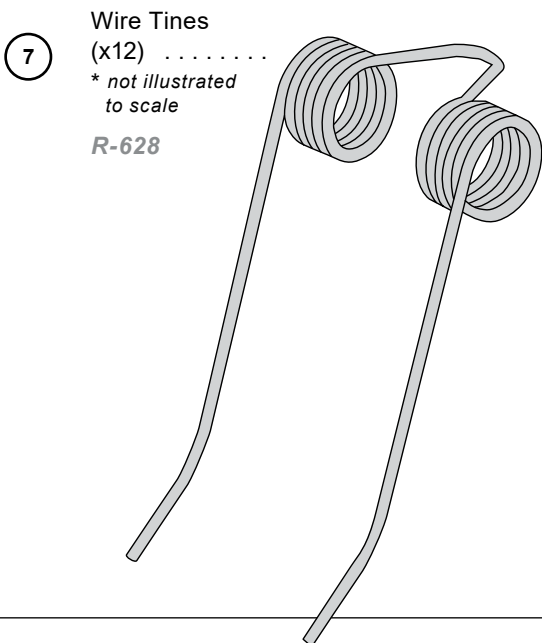
- Before you operate any feature of this attachment or towing vehicle, observe your surroundings and look for bystanders.
- Keep children, bystanders and pets at a safe distance away while operating this or any attachment.
- Use care when reversing. Before you back up, look carefully behind for bystanders.
- **KEEP RIDERS OFF TOWED ATTACHMENT AND THE TOWING VEHICLE**
- Do not carry passengers.
- Do not let anyone, especially children, ride in/on this attachment, the towing vehicle or hitch bracket. Riders are subject to injury such as being struck by foreign object and/or being thrown off during sudden starts, stops and turns. **NOTE: Riders may also obstruct the operator's view resulting in this attachment being operated in an unsafe manner.**

# HARDWARE IDENTIFIER

Most illustrations on this page are to scale for faster identification of hardware during assembly.

**DO NOT RETURN PRODUCT IF YOU ARE MISSING PARTS.**  
Please Call: 1 (877) 728-8224

## Hardware Bag "A" (Part No. Z-1688)



**IMPORTANT! This unit mounts to your STS-422 LX or LPSTS-42JD 42" Lawn Sweeper.**



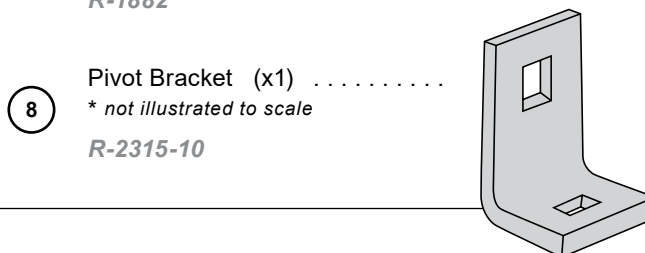
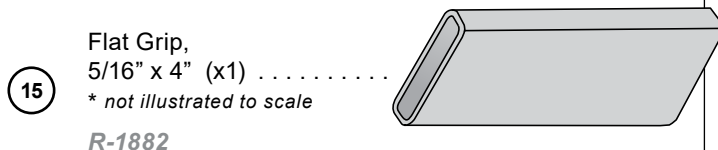
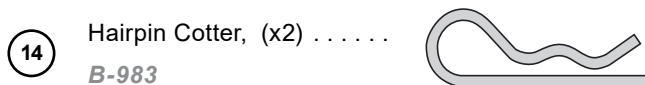
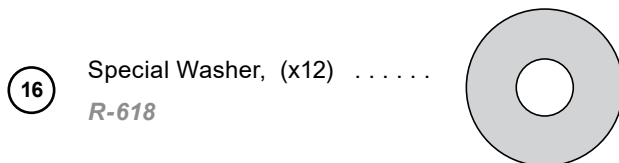
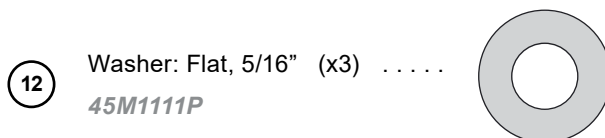
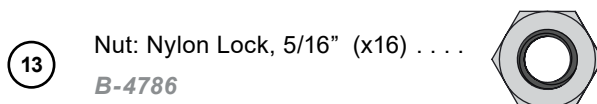
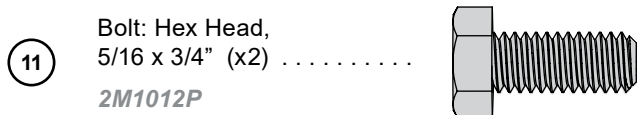
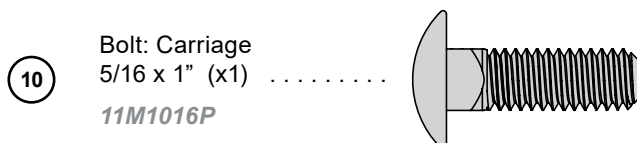
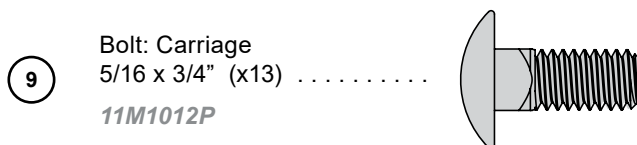
Make sure your Sweeper Hitch Clevis Assembly is assembled as called out in its Owner's Manual,

**IMPORTANT: To ensure proper adjustment of Dethatcher Kit, the Sweeper Upper Frame Assembly must be Parallel to Ground.**

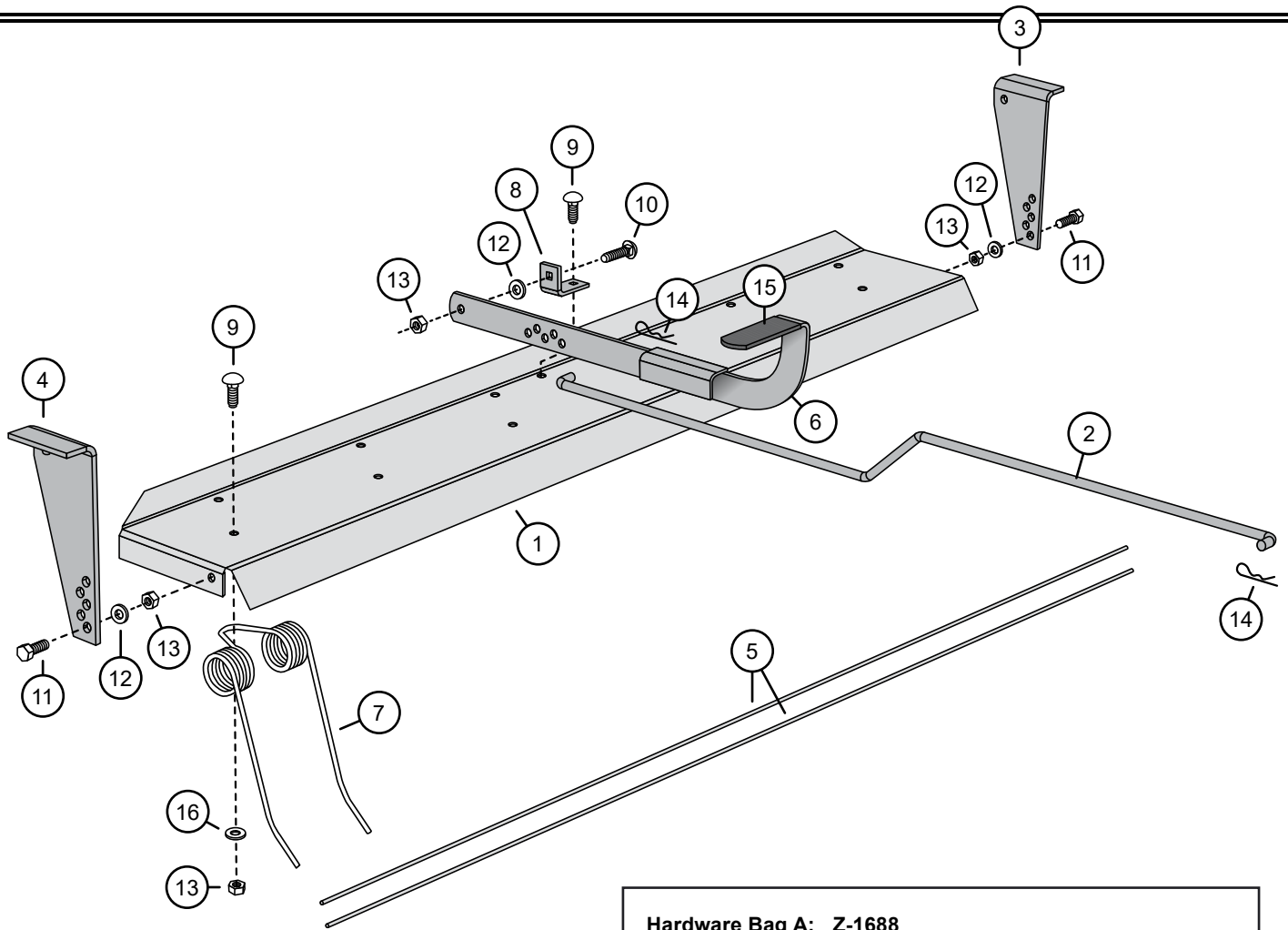


With your Tractor/Riding Mower on a flat, level surface, attach the Sweeper and adjust the Lift Handle of Sweeper to position Brushes approximately 1" off ground. Using a Level, check Upper Frame Assembly for "level" FRONT TO BACK. Adjust the Hitch Clevis Assembly of Sweeper UP or DOWN to maintain "level" position of Frame. (Refer to your Sweeper Manual).

## Hardware Bag "B" (Part No. Z-1690)



# PARTS



Ref #	Part #	Description	Qty
1	R-2308-10	Tray	1
2	R-2309-01	Transport Link	1
3	R-2310L-10	Mount Bracket, L.H.	1
4	R-2310R-10	Mount Bracket, R.H.	1
5	R-2311	Safety Wire	2
6	R-2312-10	Lift Handle	1

## Hardware Bag A: Z-1688

7	R-628	Wire Tine	12
---	-------	-----------	----

## Hardware Bag B: Z-1690

8	R-2315-10	Pivot Bracket	1
9	11M1012P	Bolt; Carriage, 5/16" x 3/4"	13
10	11M1016P	Bolt; Carriage, 5/16" x 1"	1
11	2M1012P	Bolt; Hex, 5/16" x 3/4"	2
12	45M1111P	Washer; Flat, 5/16"	3
13	B-4786	Nut; Nylon Lock, 5/16"	16
14	B-983	Hairpin Cotter	2
15	R-1882	Flat Grip, 5/16" x 4"	1
16	R-618	Washer; Special, 0.390 i.d.	12

Installation Questions?  
Missing Parts?  
Replacement Parts?



## DON'T GO BACK TO THE STORE!

Please contact our Customer Service Department  
Toll Free: 877-728-8224 OR Email: [customerservice@brinly.com](mailto:customerservice@brinly.com)

# ASSEMBLY

## Assembly Tip

Hardware illustrated on page 4 is to-scale.

For faster identification of the hardware during assembly, simply lay the hardware on top of these illustrations.

Additional info and videos are available on our website: **brinly.com**



Scan this QR code for additional info on the STS-42BHDK Sweeper / Dethatcher Combo.

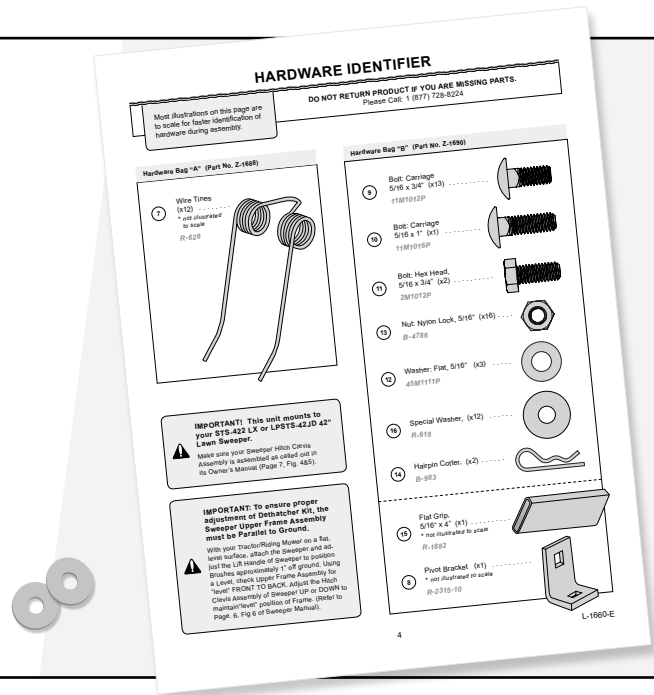
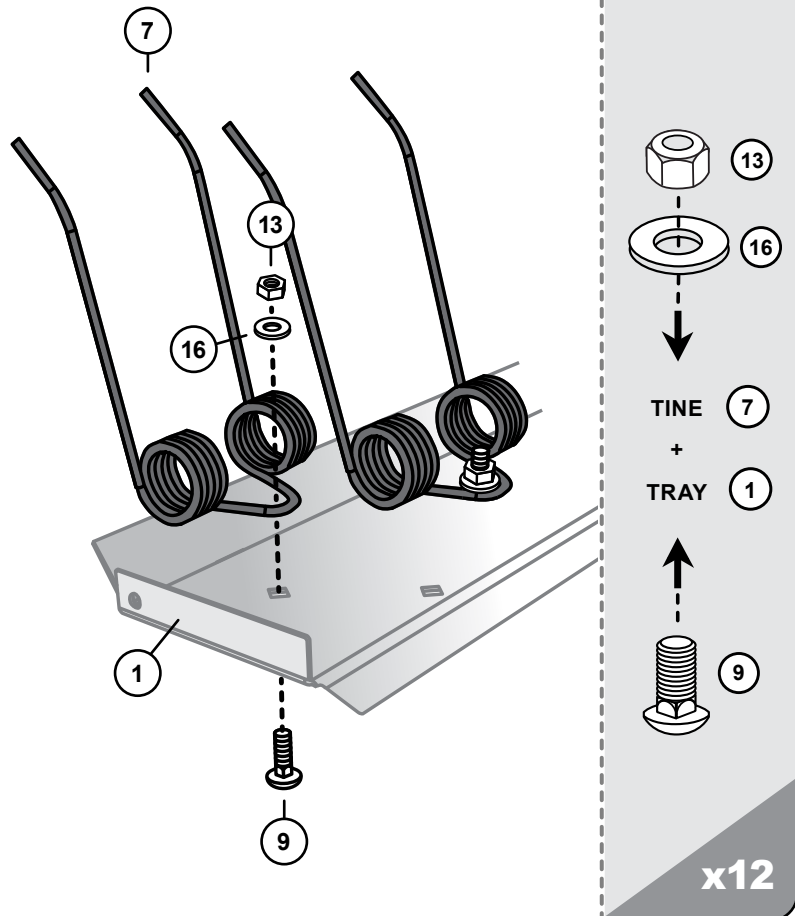


Figure 1

1. Lay the Tray (1) upside down.  
*The front of the Tray will have three sides (flanges) facing UP.*
2. Assemble the twelve Wire Tines (7) to underside of Tray (1) as shown using:
  - 5/16" x 3/4" Carriage Bolts (9)
  - Special Washers (16)
  - These rest against "U" loops in Tines*
  - 5/16" Nylon Lock Nuts (13)

NOTE: Center hole in back row of tray (1) (fourth hole from end) is for the pivot bracket later in Step 6.

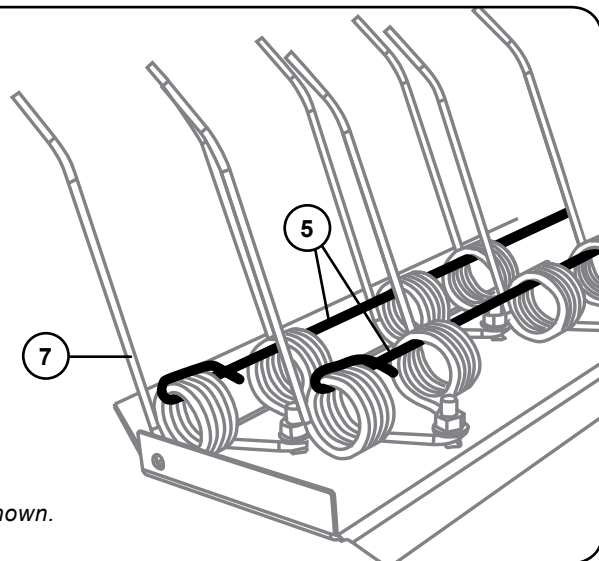
3. With Tine Tips FORWARD and positioned PARALLEL with front flange of Tray (1), tighten all securely.



# ASSEMBLY

**Figure 2**

4. Feed and center each Safety Wire through the two rows of Wire Tines (7) (inside of coils) to opposite sides.
5. Using Pair of Pliers, bend both ends of the each Safety Wire (5) as shown here.



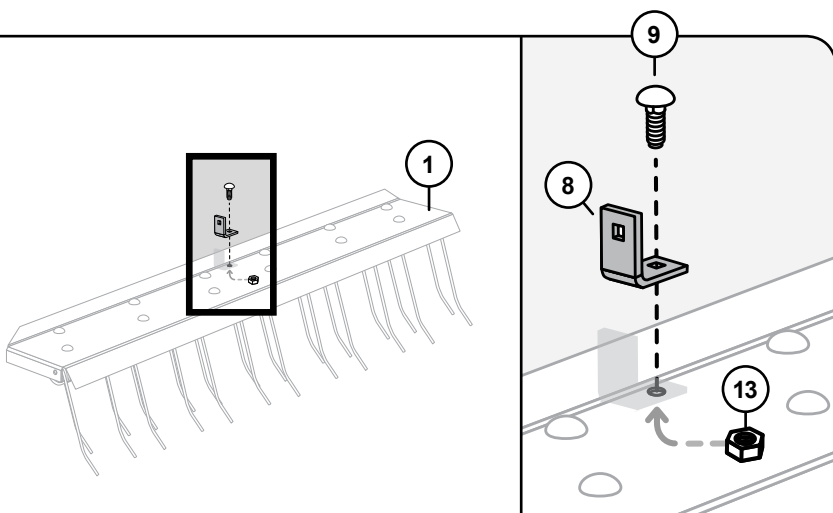
**NOTE:** Safety Wires connect all Wire Tines together in case one loosens or breaks. A safety wire must be installed through both rows of tines as shown.

**Figure 3**

6. Align the Pivot Bracket (8) with the center hole at back of the Tray (1), as illustrated.

**NOTE:** The short formed leg against the tray as shown, long leg to face left side.

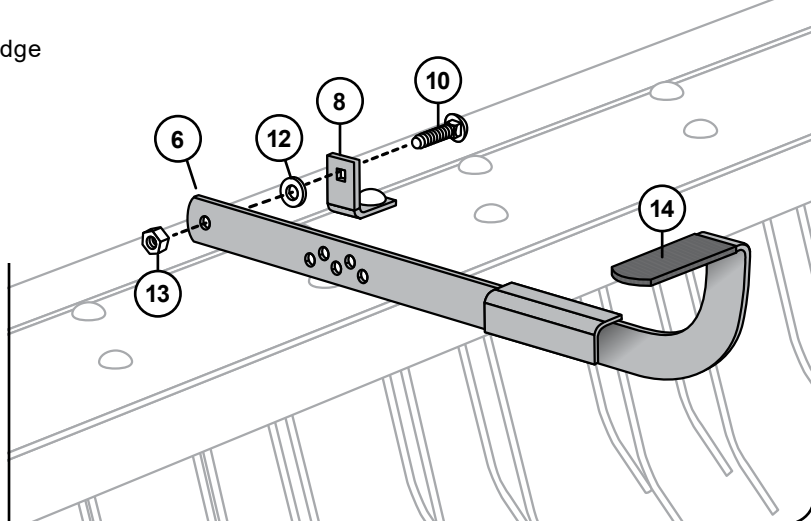
7. Tighten securely using:
  - 5/16" x 3/4" Carriage Bolt (9)
  - 5/16" Lock Nut (13)



8. Attach the Lift Handle (6) against the outside edge of the Pivot Bracket (8), in the following order:
  - 5/16" x 1" Carriage Bolt (10)
  - Pivot Bracket (6)
  - 5/16" Flat Washer (12)
  - Lift Handle (14)
  - 5/16" Nylon Lock Nut (13).

**NOTE:** Tighten until the Lift Handle (6) is barely free to move.

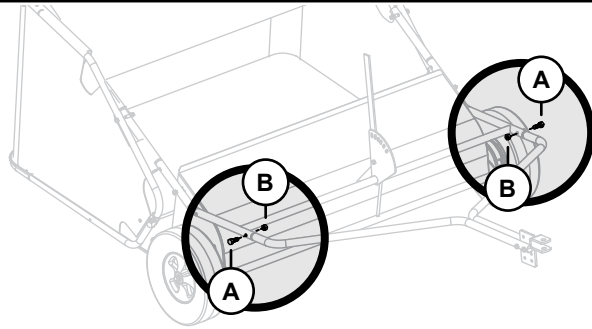
9. Slide Flat Grip (14) over the end of the Lift Handle (6).



# ASSEMBLY

**Figure 4**

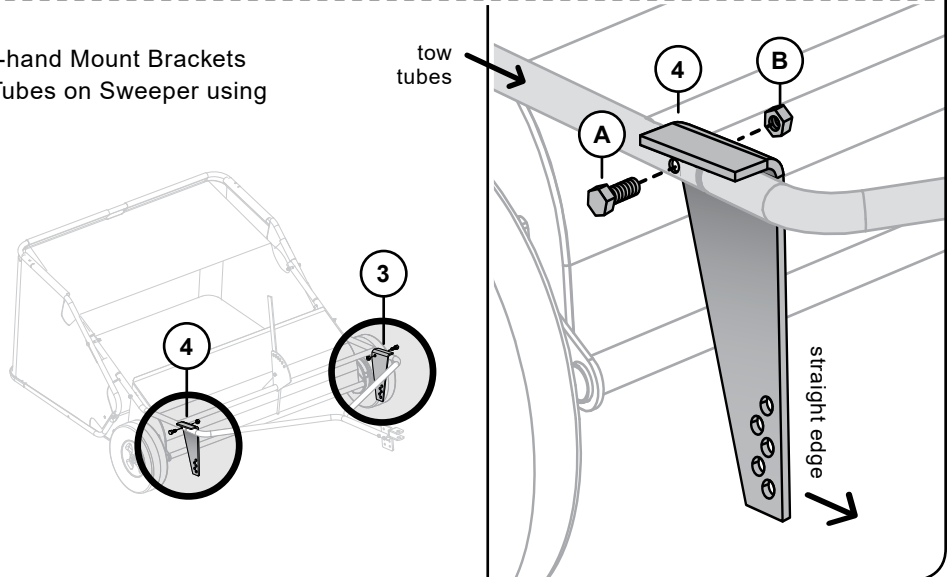
10. Remove the two existing 5/16" x 1-1/2" Hex Bolts (A) and 5/16" Nuts (B) attaching Tow Tubes and Upper Frame Assembly of Sweeper (at sides).



11. Align and attach the Left and Right-hand Mount Brackets (3 & 4) to inside edges of the Tow Tubes on Sweeper using previously removed hardware.

**NOTE: Finger tighten only.**

12. Notice that the formed legs on Mount Brackets (3 & 4) assemble over top of Tow Tubes and the straight edge is to front of Sweeper (lower group of adjusting holes FORWARD).



## PLEASE BE SURE TO READ THE FOLLOWING BEFORE CONTINUING WITH ASSEMBLY

**IMPORTANT! This unit mounts to your STS-422LX or LPSTS-42JD 42" Lawn Sweeper.**



Make sure your Sweeper Hitch Clevis Assembly is assembled as called out in its Owner's Manual.

**IMPORTANT: To ensure proper adjustment of Dethatcher Kit, the Sweeper Upper Frame Assembly must be Parallel to Ground.**



With your Tractor / Riding Mower on a flat, level surface, attach the Sweeper and adjust the Lift Handle of Sweeper to position Brushes approximately 1" off ground.

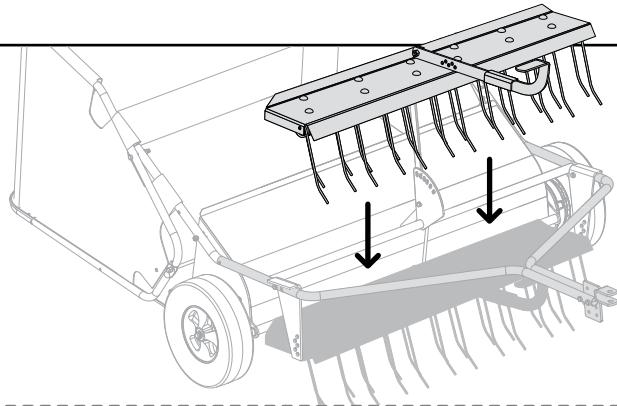
Using a Level, check Upper Frame Assembly for "level" FRONT TO BACK. Adjust the Hitch Clevis Assembly of Sweeper UP or DOWN to maintain a "level" position of Frame.

(Refer to Sweeper Manual).

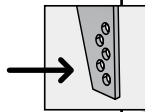
# ASSEMBLY

**Figure 5**

13. Position the previously assembled Dethatcher inside Tow Tubes with Dethatcher Tine Tips facing FORWARD.



14. Notice the series of adjusting holes on the Right and Left-hand Mount Brackets (3 & 4).

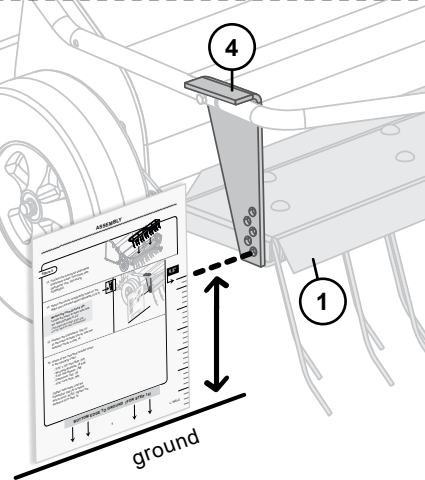


**Measuring from Ground UP:**

Locate the holes at each side that are approximately 6-1/2"

(This page has a large arrow with a 6-1/2" mark for your convenience).

15. Position the Dethatcher Tray (1) so the holes at the sides line up with the selection made in step 14.

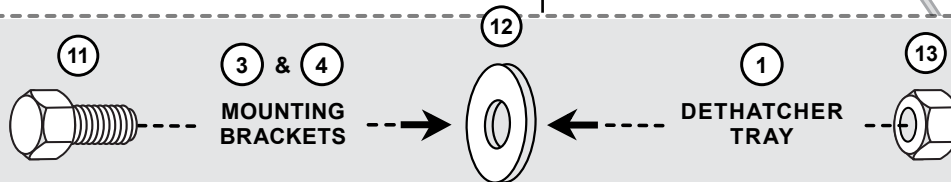
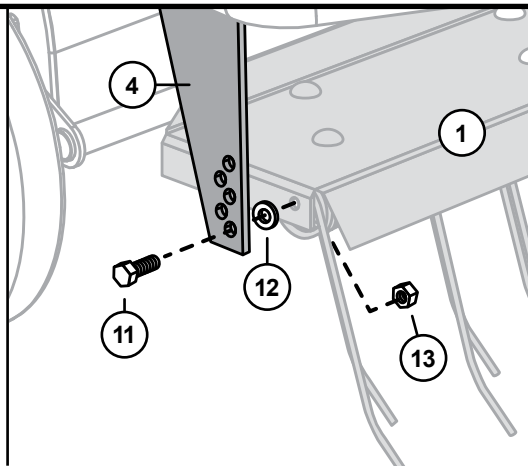


**6.5"**

16. **On both sides of the dethatcher**, attach at the mounting bracket holes in the following order:

- 5/16" x 3/4" Hex Bolt (11)
- Mounting Brackets (3 & 4)
- 5/16" Flat Washer (12)
- Dethatcher Tray (1)
- 5/16" Lock Nuts (13)

Tighten both sides until the Dethatcher Tray (1) is barely free to pivot. ALSO tighten the fasteners from Step 12.



**x2**

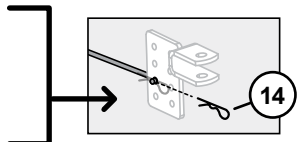
**MEASURE WITH BOTTOM EDGE TO GROUND (For Step 14)**

# ASSEMBLY

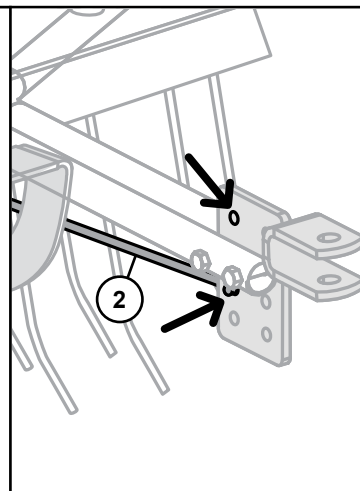
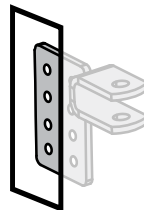
**Figure 6**

17. Connect Transport Link (2) to front hole in the Sweeper Hitch Clevis Assembly (*directly above or below Tow Tubes as shown*).

Secure the transport link with a small Hairpin Cotter (14).

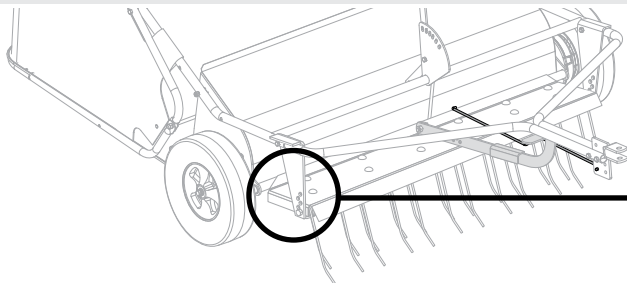
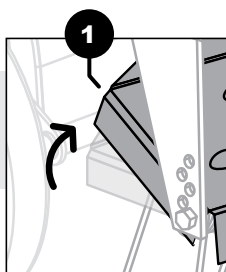


connect in first clevis row

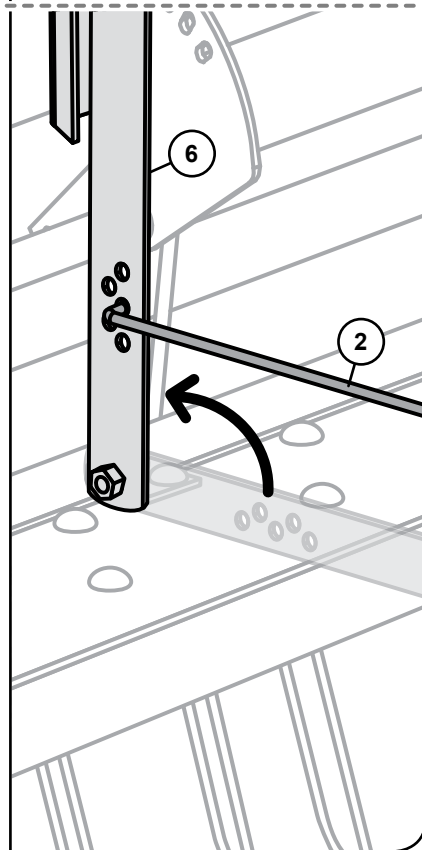
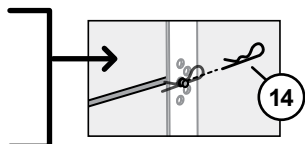


18. Raise Lift Handle (6) to a vertical position and attach opposite end of Transport Link (2) into the CENTER adjusting hole in the Lift Handle (6).

**NOTE:** *Tilting the Dethatcher Tray (1) at an angle forward will make this step slightly easier.*



Secure with the other Hairpin Cotter (14).



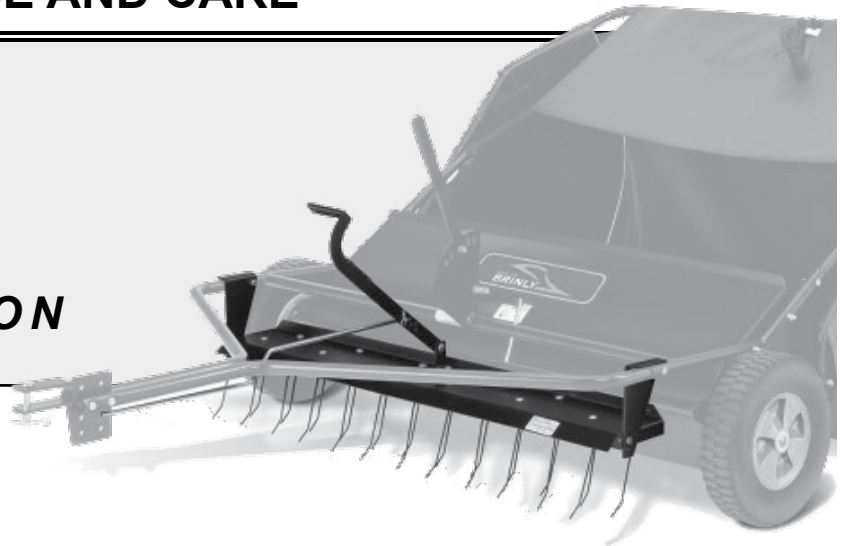
**Assembly is Complete!**

# USE AND CARE

MODEL:

**DK-422LX**

**USE & CARE SECTION**



## SPECIFICATIONS

Hamper Capacity. . . . . 20 cu. ft.

Maximum Towing  
Speed . . . . . 5 mph

### WEIGHT

Maximum  
Hamper Weight . . . . . 120 lbs.

Empty Weight  
*with the Dethatcher*  
*Attachment* . . . . . 102 lbs.

Maximum Towed  
Weight *with Dethatcher*  
*Attachment* . . . . . 222 lbs.

## TRACTOR / RIDING MOWER SPEED

The faster the Tractor/Riding Mower speed, the further the material is thrown into the Hamper.

Operate at a speed that will throw material to the back of the Hamper. Under normal conditions, 3-4 M.P.H., or the speed of a brisk walk.

**IDEAL  
SPEED  
3-4  
MPH**

### HOW TO CALIBRATE YOUR TRACTOR TO 3 MPH:

- Measure a distance of 20 feet on a flat, level surface.
- Adjust the tractor throttle and select a gear to cover this distance in 4.5 seconds.
- To adjust for 4 mph, cover the same measured distance in 3.4 seconds.

## OPERATION

The use of the Dethatcher-Sweeper combination will accomplish Thatch removal and Sweeping at the same time. When adjusted properly, the Dethatcher is designed to comb through your lawn-flipping out harmful Thatch and collecting it in the Hamper. Tines can be lowered to actually contact ground for more aggressive operation (such as seedbed preparation, etc.). Refer to Fig. 6. For best results, lawn should be normal height (not too high) and relatively dry prior to Dethatching.

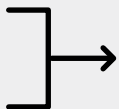
If you prefer to operate the Sweeper only, simply move the Lift Handle to the vertical position (Tines facing to REAR).

# USE AND CARE

## DETHATCHER TINE TIP ADJUSTMENT



**IMPORTANT:** While the Sweeper is connected



- Adjust the **BRUSH HEIGHT** to approximately 1" off ground.
- Adjust the **TINE HEIGHT** between 1/2" to 1" off ground.

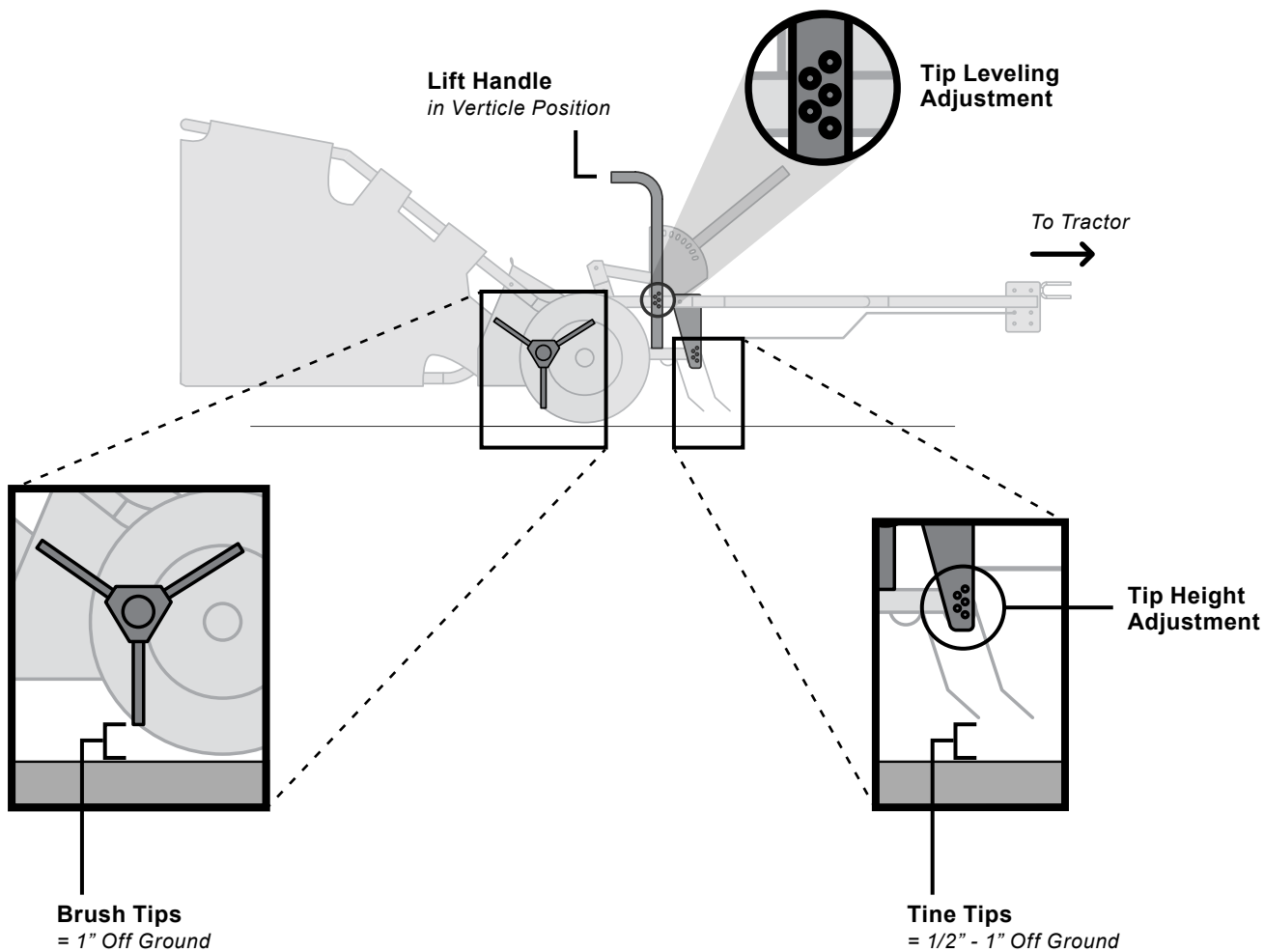
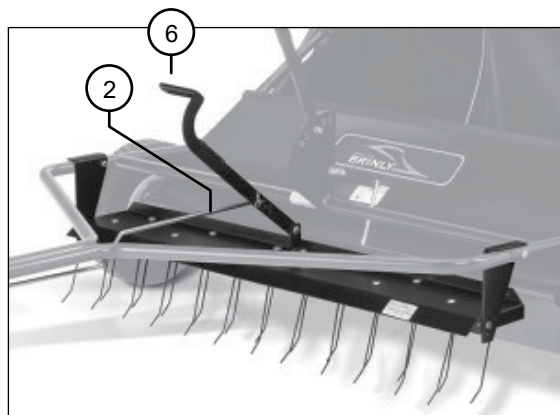
Lower Lift Handle (6), locking Transport Link (2) inside "pocket" of Lift Handle. **Tray should be LEVEL to slightly higher at front.**

*If tray is too HIGH at front:*

*Raise Handle to vertical position, remove Hairpin Cotter at Lift Handle and move Transport Link one hole to REAR. Reattach with Hair Pin Cotter. Check for proper position and move additional hole, if necessary, to obtain proper position.*

*If Tray is too LOW at front:*

*Raise Handle to vertical position, remove Hairpin Cotter at Lift Handle and move Transport Link one hole to FRONT. Reattach with Hair Pin Cotter. Check for proper position and move additional hole, if necessary, to obtain proper position.*



# USE AND CARE

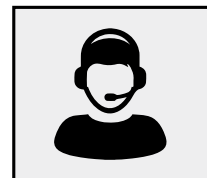
## MAINTENANCE



- The key to years of trouble-free service is to keep your Sweeper and Dethatcher Kit clean and dry.
- Never allow wet material to remain in the Hamper for extended periods of time.
- Occasionally check all moving parts for free movement and, if necessary, lubricate with oil.
- Should rust develop, sand lightly and then paint area with enamel.
- Periodically check all fasteners for tightness.

## NOTES

## SERVICE



### QUALITY CONTINUES WITH QUALITY SERVICE

If you have installation questions, are missing parts or need replacement parts, don't go back to the store!

Please find your product serial number and model number, then contact our Customer Service department:



In North America and Canada call  
Toll-Free: **877-728-8224**



Chat online: **www.brinly.com**



Email: **customerservice@brinly.com**

## ONLINE

### BRINLY.COM

Additional info and videos are available on our website. Please visit the URL above OR scan this QR code.

DK-422LX





## MANUFACTURER'S LIMITED WARRANTY FOR BRINLY PULL-BEHIND ACCESSORIES

The limited warranty set forth below is given by Brinly-Hardy Company with respect to new merchandise purchased and used in the United States, its possessions and territories.

Brinly-Hardy Company warrants the products listed below against defects in material and workmanship, and will at its option, repair or replace, free of charge, any part found to be defective in materials or workmanship. This limited warranty shall only apply if this product has been assembled, operated, and maintained in accordance with the Operator's manual furnished with the product, and has not been subject to misuse, abuse, commercial use, neglect, accident, improper maintenance, alteration, vandalism, theft, fire, water, or damage because of other peril or natural disaster.

Normal Wear Parts or components thereof are subject to separate terms as follows: All normal wear parts or component failures will be covered on the product for a period of 90 days.

Parts found to be defective within the warranty period will be replaced at our expense. Our obligation under this warranty is expressly limited to the replacement or repair, at our option, of parts found to be defective in material and workmanship.

**HOW TO OBTAIN SERVICE:** Warranty parts replacements are available, **ONLY WITH PROOF OF PURCHASE**, through our Customer Service Department. Call 877-728-8224.

This limited warranty does not provide coverage in the following cases:

- a) Routine maintenance items such as lubricants and filters.
- b) Normal deterioration of the exterior finish due to use or exposure.
- c) Transportation and/or labor charges.
- d) The warranty does not include commercial and/or rental use.

**No implied warranty, including any implied warranty of merchantability of fitness for a particular purpose, applies after the applicable period of express written warranty above as to the part as identified below. No other express warranty whether written or oral, except as mentioned above, given by any person or entity, including a dealer or retailer, with respect to any product, shall bind Brinly-**

**Hardy Co. During the period of the warranty, the exclusive remedy is repair or replacement of the product as set forth above.**

**The provisions as set forth in this warranty provide the sole and exclusive remedy arising from the sale. Brinly-Hardy Co. shall not be liable for incidental or consequential loss or damage including, without limitation, expenses incurred for substitute or replacement lawn care services or for rental expenses to temporarily replace a warranted product.**

Some states do not allow the exclusion or limitation of incidental or consequential damages, or limitations on how long an implied warranty lasts, so the above exclusions or limitations may not apply to you.

During the warranty period, the exclusive remedy is replacement of the part. In no event shall recovery of any kind be greater than the amount of the purchase price of the product sold. Alteration of safety features of the product shall void this warranty. You assume the risk and liability for loss, damage, or injury to you and your property and/or to others and their property arising out of the misuse or inability to use this product.

This limited warranty shall not extend to anyone other than the original purchaser or to the person for whom it was purchased as a gift.

### **HOW STATE LAW RELATES TO THIS WARRANTY:**

This limited warranty gives you specific legal rights, and you may also have other rights which vary from state to state.

**IMPORTANT:** The Warranty period stated below begins with the **PROOF OF PURCHASE**. Without the proof of purchase, the Warranty period begins from the date of manufacture determined by the serial number manufacturing date.

### **WARRANTY PERIOD:**

The warranty period for the product shown in this manual is as follows: Steel Frame Parts: 2 Years. Tires, Wheels and Drive are normal wear parts - 90 days.