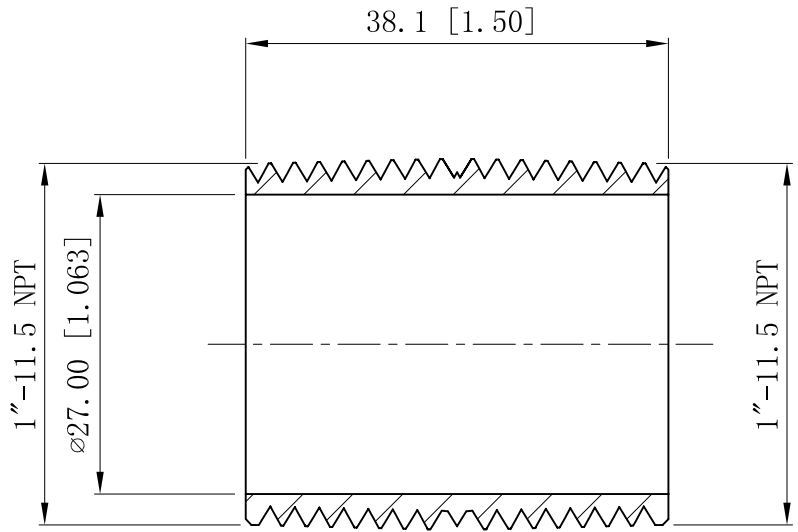
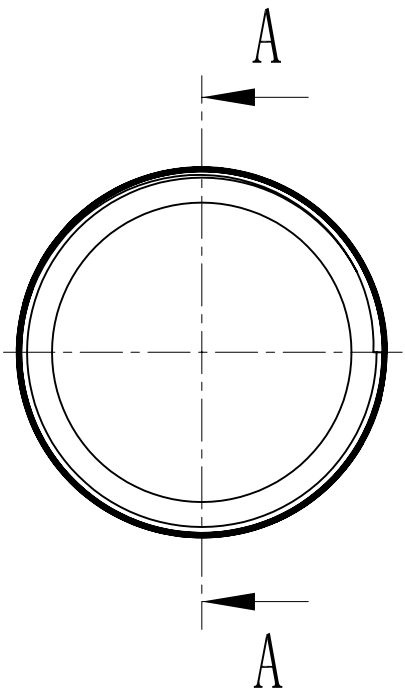


|  |        |
|--|--------|
| SIDES                                    | BOTTOM |
|  |        |
|  |        |
|  |        |
|  |        |
| Material:Steel-Welding tube, zinc plated |        |



CUTAWAY VIEW A-A



|                       |
|-----------------------|
| DESCRIPTION           |
|                       |
|                       |
| TRADE REFERENCE TERMS |
|                       |

This data sheet is for reference only .GARVIN INDUSTRIES reserves the right to make changes to the design without prior notice.

|                  |  |         |        |       |
|------------------|--|---------|--------|-------|
| STANDARD PACKING | <h1 style="text-align: center;">GARVIN INDUSTRIES</h1> |         |        |       |
| 25 PCS           |  |         |        | TITLE |
|                  | SIZE   | DWG NO. |        | REV   |
|                  | A4   |         | RN100C |       |
|                  | DATA SHEET   |         |        |       |