

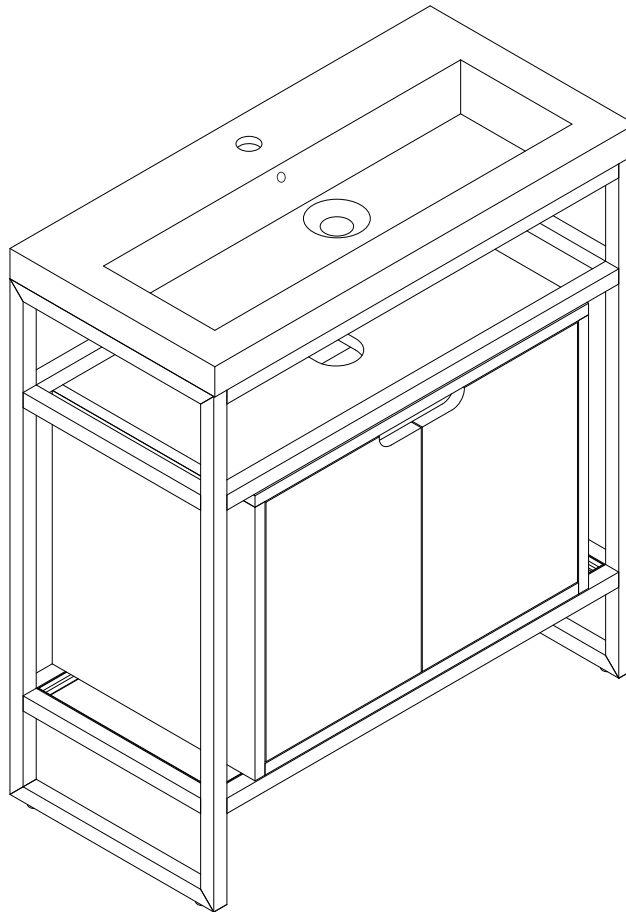
# 31.5" BOSTON SINK CONSOLE

C105-V31.5-BNK

C105-V31.5-MBK

C105-V31.5-RGD

**JAMES MARTIN**  
VANITIES



## Features and Materials

Metal Materials: Stainless Steel  
Panels: MDF  
Installation Type: Floor Standing  
Number of Basins: One, Integrated Sinktop  
Sinktop Included: NO, Sold Separately (CSP-S3216-WG)  
Basin Overflow: Yes, Rear Facing  
Number of Doors: 2, with Optional Storage Cabinet  
Number of Drawers: 0  
Number of Glass Shelves: One  
Storage Cabinets included: YES(C105-SC25-GW)  
Assembly Required: Yes  
Metal Finish: Brushed Nickel/Matte Black/Radiant Gold  
Wood Finish: Glossy White  
Fits Drain Hole Size: 1-3/4"  
European Soft Close Hinges  
Adjustable Levelers

## Dimension

Width: 31-1/2"  
Depth: 15-3/8"  
Height: 33-1/2"  
Rough-In Height: 21-1/2"

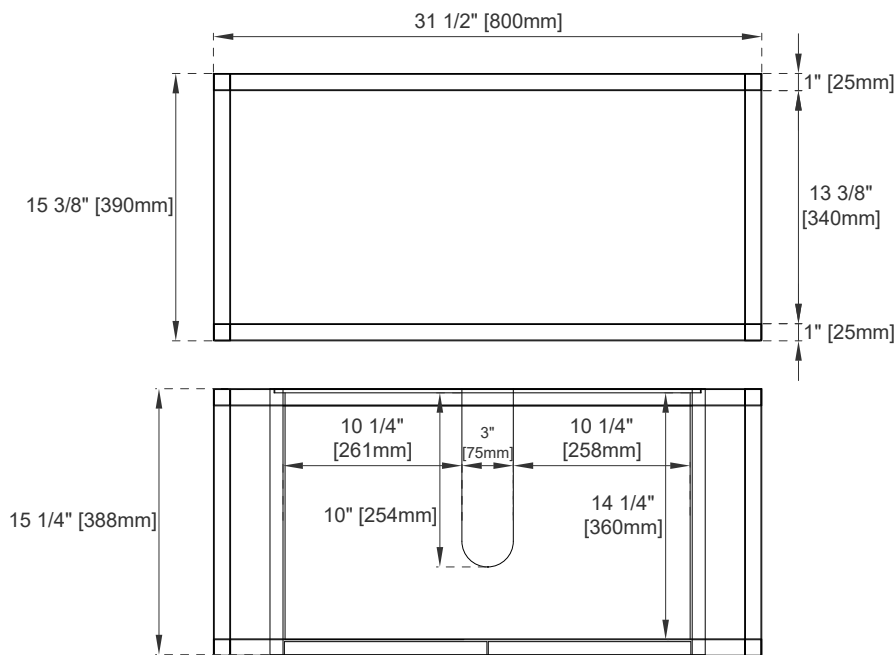
# 31.5" BOSTON SINK CONSOLE

C105-V31.5-BNK

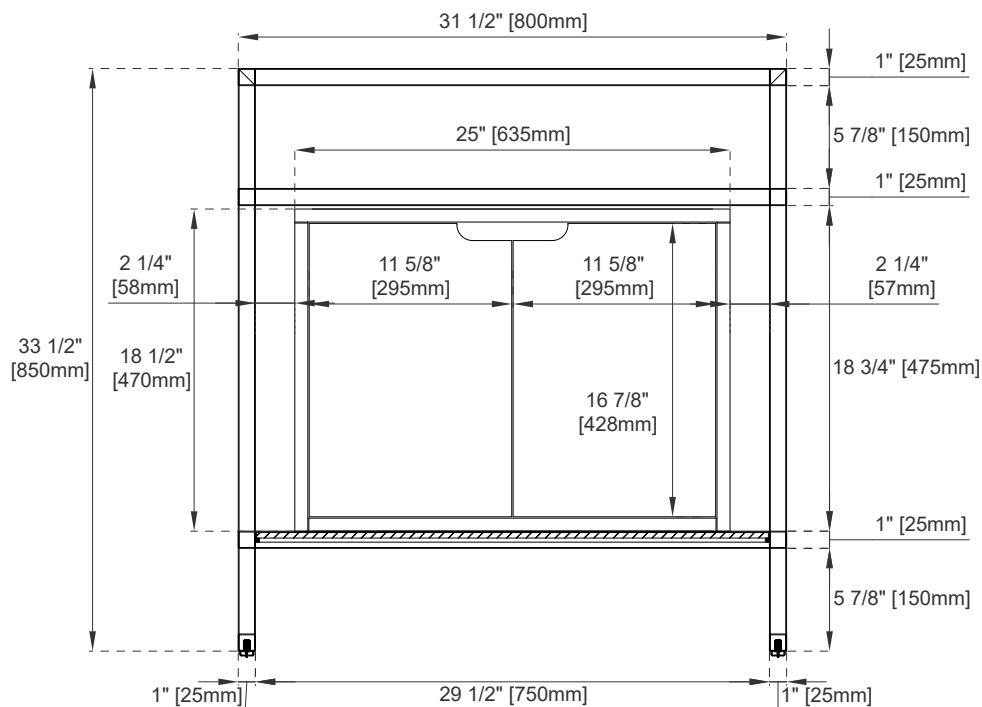
C105-V31.5-MBK

C105-V31.5-RGD

**JAMES MARTIN**  
**VANITIES**



Top View



Front View

All dimensions are nominal

Diagrams are of sink console only-James Martin Optional integrated sinktops are not shown

Visit website for warranty and installation information  
[www.jamesmartinvanities.com](http://www.jamesmartinvanities.com)

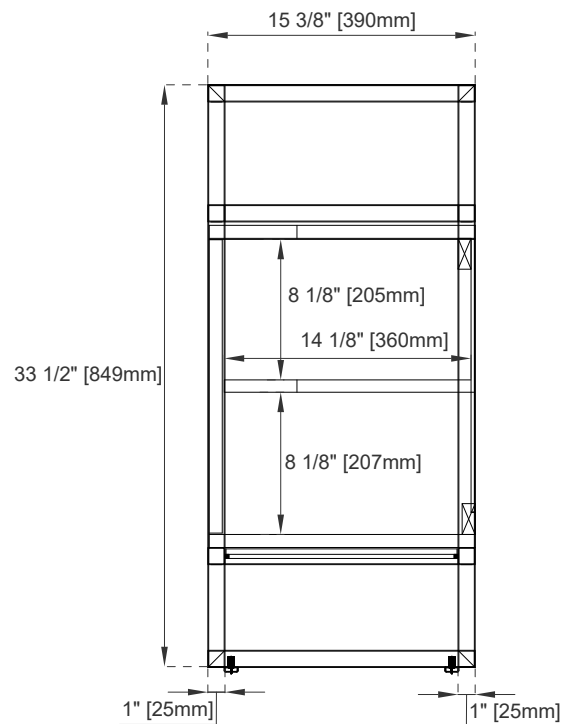
# 31.5" BOSTON SINK CONSOLE

C105-V31.5-BNK

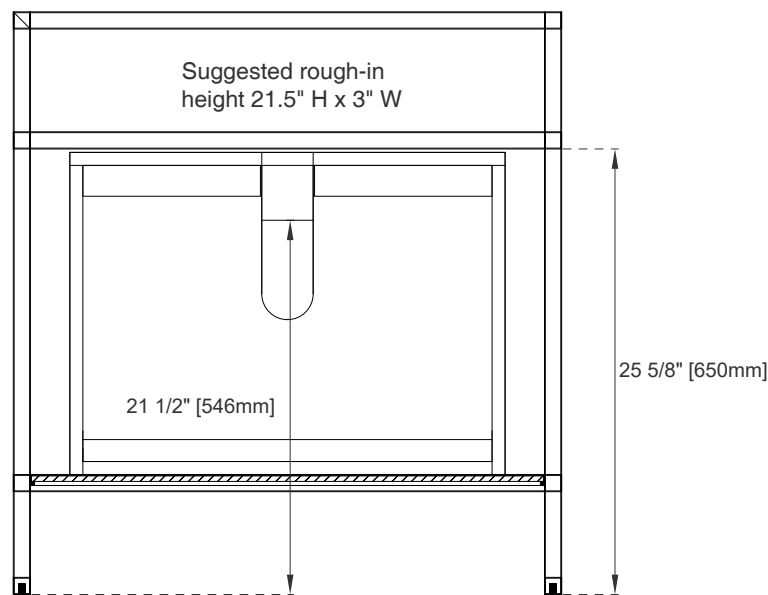
C105-V31.5-MBK

C105-V31.5-RGD

JAMES MARTIN  
VANITIES



Side View



Back View

All dimensions are nominal

Diagrams are of sink console only-James Martin Optional integrated sinktops are not shown

Visit website for warranty and installation information  
[www.jamesmartinvanities.com](http://www.jamesmartinvanities.com)