

APP USER GUIDE



24/7 HELP For 24/7 customer support, visit feit.com/help

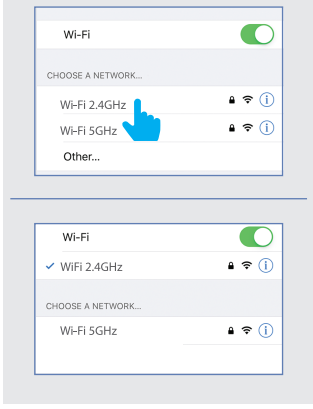
System Requirements
Minimum: iOS 9.3, Android™ 4.4 KitKat® or higher
- Dedicated 2.4GHz Wi-Fi Network -

Your screen images may differ from this user guide.

BEFORE USING THIS USER GUIDE FOR INCLUDED INSTALLATION GUIDE FOR PROPER PRODUCT INSTALLATION.

NOTE: Only works with 2.4GHz Wi-Fi networks.

Go to your Wi-Fi settings and connect your phone to your 2.4GHz Wi-Fi network.



Set Up Device

- Download the **Feit Electric** app.
- Launch the **Feit Electric** app. Enter an email address to register, then tap **Continue**. A verification code will be sent to your email.
- Create a password then tap **Done**.

Permissions & Location Access

- 4** **Permissions & Location Access**
Allow notifications (highly recommended).
- 5** Allow the **Feit Electric** app to access your location to help connect your Chasing Strip Light.

Enable Bluetooth

- 6** **Enable Bluetooth** on your smart device to facilitate simple pairing.

Simple Pairing Mode

- 1** Make sure the Chasing Strip Light is blinking, then tap **Add Device** or the plus icon (+) on the upper right corner.
- NOTE: If your Chasing Strip Light is not blinking make sure it is on by pressing the power button on the control module. Then press and hold the power button until the unit starts blinking.

The Chasing Strip Light name(s) will appear in a small window for simple pairing enabled devices. Tap Go to add.

- 2**
- 3** Select one Chasing Strip Light from the list. Tap the plus icon (+).

After confirming that you are on a 2.4GHz Wi-Fi network, enter your password then tap Confirm.

- 4**

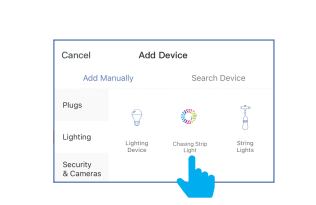
The status window will appear and show progress toward set-up.

- 5**
- NOTE: If unsuccessful, the **Failed to Add** screen will appear. Quit the app and repeat the previous steps.
- 6** To rename pairing next, tap the **Pen** icon, enter the new name and tap **Done**. The Chasing Strip Light is now ready to be controlled with the **Feit Electric** app.
- NOTE: Constant power to the Chasing Strip Light is required at all times.

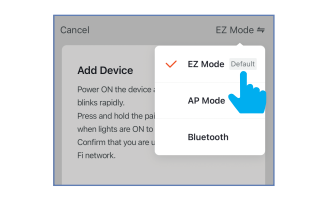
Alternative Set-up Method EZ Mode

- 1** Tap the plus icon (+) in the upper right corner.
- NOTE: Use **EZ Mode** to set up multiple smart products at the same time or if there are issues with simple pairing.
-

2 Tap Lighting, then select Chasing Strip Light.



3 Tap the upper right corner and make sure you have EZ Mode selected. Follow steps 4-6 from Simple Pairing Mode to complete setup.



Alternative Set-up Method AP Mode

- 1** Tap the plus icon (+) in the upper right corner.
- NOTE: AP Mode is an alternative method to connect your device if Simple Pairing Mode and EZ Mode are not successful.
-
- 2** Tap **Lighting**, then select **Chasing Strip Light**.

3 Choose AP Mode.

- 3** Choose **AP Mode**. Make sure your Chasing Strip Light is in AP pairing mode (light should flash one time every two seconds). Tap **Confirm** then tap **Next** to go on to the next step.
- NOTE: If the Chasing Strip Light is flashing, hold the control module power button again for another 5 seconds to enter in AP mode. It will blink slower.

4 Enter the name of your 2.4GHz Wi-Fi network, enter your password and tap Next to begin connecting.

- 4**
- NOTE: Your Wi-Fi network name and password are case sensitive.

5 Tap Go connect. In your smart device's Wi-Fi settings, choose the SmartLife-XXXX network.

- 5**
 - 6** In your smart device's Wi-Fi settings, choose the **SmartLife-XXXX** network. After you have connected to **SmartLife**, return to the **Feit Electric** app.
- NOTE: After connecting the Chasing Strip Light, your smart device will automatically rejoin your original 2.4GHz network.

7 Your device should begin connecting using AP Mode.

- 7**
- 8** If you see this screen your device was added successfully.

Features

- 1 Individual Chasing Strip Light On/Off**
Tap the Chasing Strip Light icon to turn the Strip Light On/Off.
- 2 Individual Chasing Strip Light Operation**
Press and hold the Chasing Strip Light icon for two seconds to enter operation.

Dimming

- 3** Tap and hold the **Dimming** bar at the bottom of the screen. Slide the dimming bar left or right to set the brightness level. Tabs above the dimmer bar allow you to choose desired colors or color combinations.

Custom Color Changing

- 4** Tap the brush icon as shown below on your screen. Tap your desired color. Then tap the Chasing Strip Light sections to fill in with your desired color.
- A** Tap the eraser icon as shown below on your screen. Tap the Chasing Strip Light sections that you would like to change. The color will disappear from those sections after you tap them.

Music

- 5** Tap the **Music** icon to sync your light with the rhythm of music. Your smart device must remain on the **Music** screen for continuous synchronization.

Scene

- 6** Tap the Color icon in the bottom of the screen. Select a DIY option (**Scenery, Life, Festival, Mood** or **White**) from the top of your screen. Tap the desired Scene from the middle of your screen.

Modify

- 7** Tap **Add +** from the top right of your screen. Choose a Scene style option from the top of your screen (**Gradient, Jump, Breathe, Flashing, Flowing, Rainbow, Meteor, PileUp, Falling, Follow, Flutter, Flash, Rebound, Shuttle, Random or Switch**). Tap **Preview** to view the effect on your Chasing Strip Light. Tap **Save** in the top right of your screen to lock in desired effect.
- A** Desired Scene colors, you can choose up to 8. Tap **Preview** to view the **Scene**.
- B** Select **Scene** sequence customization options by selecting desired option(s) below the color bar. Options will vary based on **Scene** type.

Plan

- 8** Tap the **Other** icon in the bottom right of your screen.
- A** Tap **Plan**.
- B** Tap the **Countdown off** toggle button.
- C** Set the countdown to turn the light off by scrolling up or down on the **Hour, Minute** and **Second**. Tap **Save** in the upper right hand corner once you have set your desired time.

Chasing Strip Light Length

- 9** If your Chasing Strip Light has been cut, or you added another Chasing Strip Light, adjust the Actual Length by dragging the bar slider to match the current light length. Then tap **Confirm**. Set 6m for one full-length Chasing Strip Light and 12m for two full-length Chasing Strip Lights.

Default Light

- 10** Choose the default light setting by selecting one of the options (**Restore memory, Initial mode** or **Customized**). Then tap **Save** in the upper right corner.

Groups

- 1** Tap the **Groups** icon at the bottom of the app home screen.
- NOTE: To create groups you will need at least two Chasing Strip Light. You can only group a Chasing Strip Light with other Chasing Strip Lights.
- 2** Tap on **Create Group**.
 - 3** Tap on **Chasing Strip Light**.

Select the Chasing Strip Lights that you want to group.

- 4**
- 5** Tap the group name and enter the name of the group.

Once the group is named and the Chasing Strip Lights are selected, tap Save in the upper right corner.

- 6**

7 Manage Groups Tap the Groups icon.

- 7**
- 8** Tap the context menu in the upper right corner (⋮).
- 9** Tap **Manage Group**.

10 Select the group to edit.

- 10**
- 11** Once selected, tap **Edit** in the upper right hand corner.
- 12** Rename the group or remove a Chasing Strip Light from the group. Once complete, tap **Save** in the upper right corner.

13 Delete Groups

Tap the **Groups** icon.

14 Tap the context menu in the upper right corner (☰).

15 Tap **Delete Group**.

16 Select the group to delete. Once selected, tap **Delete Group** in the upper right corner.

17 Tap **Confirm**.

Share Control of a Device (Two Methods)

1 **Method 1:** Tap the **Profile** icon, then tap **Share Devices**.

2 Tap **Add** at the bottom of the screen.

3 Select the device that you wish to share. Tap **Sharing** in the upper right corner.

4 Enter the account name of the person you want to share with (this is typically their email address). Then tap **Done** when prompted.

NOTE: New members must set up an account before sharing is possible.

5 **Method 2:** From the Chasing Strip Light's settings menu, tap the **Pen** icon located in the upper right corner. Then tap **Share Devices**.

Share Control of All Devices Within a Location

1 From the home screen, tap **Profile**, then **Location Management**, then the location you would like to share. Tap **Add members**.

2 Enter the new member's email address then tap **Add**.

Room Management

1 Tap the three dots from the home menu, then tap **Room Management**.

2 Tap **Add a Room**.

3 Tap on a preset room name or create your own.

4 Add individual lamps by tapping on the icon + next to each Chasing Strip Light's name.

5 Remove individual Chasing Strip Lights by tapping on the icon - next to each Chasing Strip Light name.

Home Management

1 Tap **Home** from the main menu, then tap **Location Management**.

2 Tap **Add Location** to indicate where the bulbs are located.

Smart Scenes

1 From the **My Home** page, tap **Smart Scenes** at the bottom of screen.

2 In the **Smart Scenes** tab, tap the plus icon (+).

3 Tap on **Launch Scenes**.

4 Tap on **Run the device**.

5 Select your device to initiate an action.

6 On the **Select Function** screen, tap on the action you want the device to perform.

7 Review your scene, edit them if necessary, then **Save**.

8 Your action(s) will appear under **Scene** tab.

NOTE: Use **Automation** to initiate an action based on certain conditions (Sunrise/Sunset, Location Change, Schedule, Device Status, etc.).

Automation

1 From the **My Home** page, tap **Smart Scenes** at the bottom of screen.

2 Tap **Automation** at the top of the screen, and then tap on plus icon (+).

3 Set a **condition** you would like to trigger.

4 Set up a **task** you would like to automate.

5 Review your automations, edit them if necessary, then **Save**.

6 Your automation will appear under the **Automation** tab.

Enable Siri Shortcuts® (for use with iPhone)

1 From the **My Home** page, tap **Smart Scenes** at the bottom of screen.

2 In the **Scene** tab, tap **Add to Siri** located at the bottom of the screen.

3 In the **Siri Shortcut** screen, tap on the action you would like to add to **Siri**.

4 On the **"Hey Siri"** screen, tap on the device name to edit it. Tap **Done** at the bottom of the screen.

5 Now you can use the **"Hey Siri"** command to control this action from your iOS device. **"Hey Siri, turn on Chasing Strip Light."**

NOTE: Use **Siri** to activate a scene through voice control. If you have not created a scene, see the **Smart Scenes** section.

CONNECT TO ALEXA

1 Tap on **Profile** at bottom right. Tap on **Use Alexa and Google Assistant**.

2 Tap on **Amazon Alexa**.

3 Tap on **Link with Amazon Alexa**.

4 Tap on **Link**. You will be linked automatically to your Amazon Alexa app.

NOTE: Sign in to Amazon Alexa. If you do not have an account with Amazon, please create one.

NOTE: Additional devices will be added automatically when added to the **Feit Electric** app.

CONNECT TO GOOGLE ASSISTANT

1 Tap on **Profile** bottom right. Tap on **Use Alexa and Google Assistant**.

2 Tap on **Google Assistant**.

3 Tap on **Link with Google Assistant**.

4 Tap on **Link**. You will be linked automatically to your Google Assistant app.

NOTE: Sign in to Google Assistant. If you do not have an account with Google, please create one.

NOTE: Additional devices will be added automatically when added to the **Feit Electric** app.

Need Help?

Please refer to our online resources at www.feit.com/help to learn about more features & latest updates

24/7 HELP feit.com/help