

Product Family

Eaton Switch A/C Disconnect

Features

This A/C Disconnect is 60 amp switch rated for 10 HP motors at 240 VAC. The switch is an on off circuit breaker with no pull out head that could be lost or stolen. There are four, one inch combination locks, with two being in the back and two in the bottom end wall. Removing the cover housing on this disconnect provides an opening to lugs for easy wiring.



DPB222R

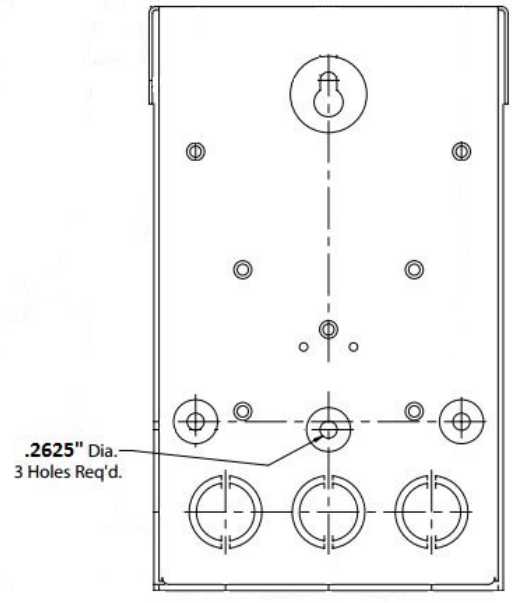
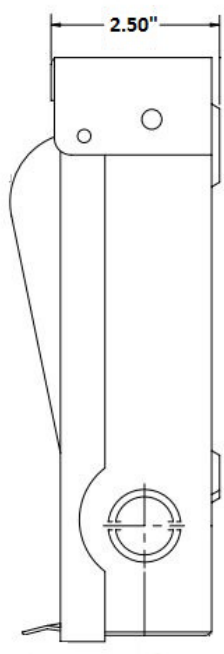
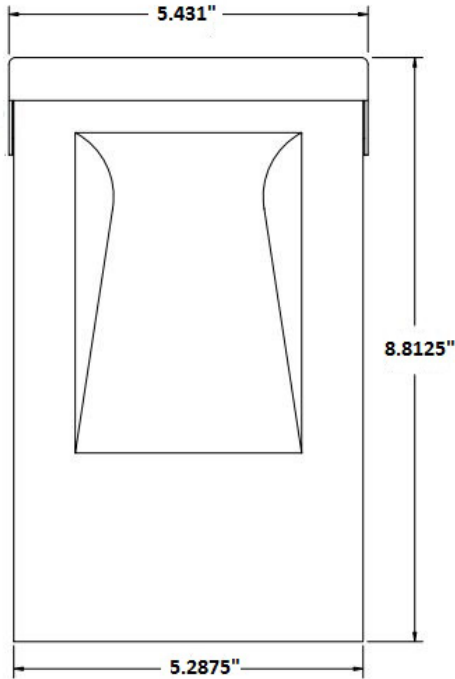
Specifications

Certifications:
UL Listed switch case
CSA

NEMA Rating:
3R

Mounting:
Surface

Warranty:
1 year



STOCK NO	Description	Voltage	Horsepower	Amps	Weight	UPC
DPB222R	60A non-fusible switch disconnect	240 V	10 HP	60 A	2.974 lbs	0782114205686



Simplify The Way You Work

6650 Sugarloaf Parkway, Duluth, GA 30097 Phone: 800-955-2222 Fax: 678-542-3700 www.diversitech.com
© 2016 Diversitech Corporation
All rights reserved.