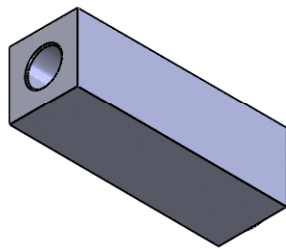
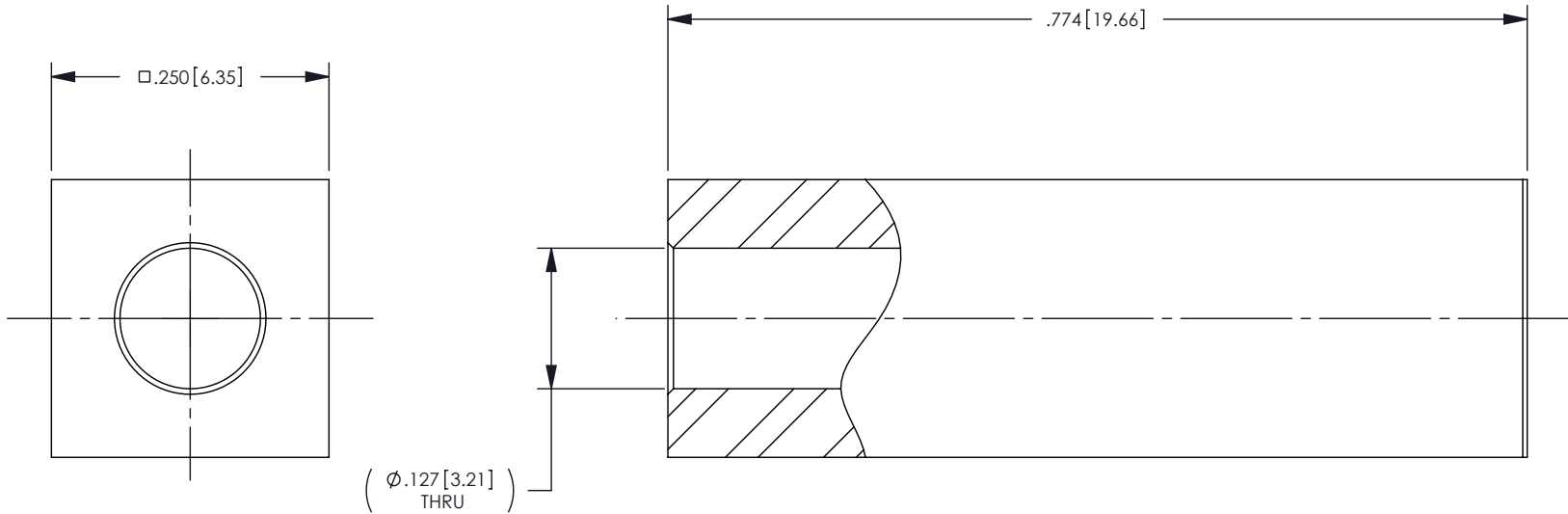


NOTES: UNLESS OTHERWISE SPECIFIED
 1. MATERIAL: TOOL STEEL

2. THE TOOL IS SLIGHTLY LONGER THAN THE GUIDE PIN. A FLAT ROCK TOOL WOULD COME DOWN AND DRIVE THE GUIDE PIN IN UNTIL THE FLAT ROCK HITS THE TOOL. THE SHOULDER OF THE GUIDE PIN WOULD NOT BE BOTTOMED ON THE PWB.

REV	DESCRIPTION	BY DATE	APPD
02	PRELIMINARY DWG .774 WAS .770 ER23314	DCam 04/09/10	XXX



CATALOG P/N: KTH-2327

PER ASME Y14.5M-1994 UNLESS OTHERWISE SPECIFIED: DIMENSIONS ARE IN INCHES [MM] TOLERANCES: DECIMAL: .XX [X.X] ± .01 [0.3] .XXX [X.XX] ± .005 [0.13] .XXXX [X.XXX] ± .XXXX ANGLES: ± 2° SCALE: 4:1				 Winchester Electronics Corporation 62 Barnes Industrial Road North Wallingford, Connecticut 06492	
CUSTOMER SALES DRAWING			THIRD ANGLE 	GUIDE PIN INSERTION TOOL	
DRAWN	DATE	APPROVED	DATE	A	SDKTH-2327
DCam	03/30/10	XXX	XX/XX/XX		
APPROVED	DATE	APPROVED	DATE	SHT OF 1 1	REV 02
XXX	XX/XX/XX	XXX	XX/XX/XX		