

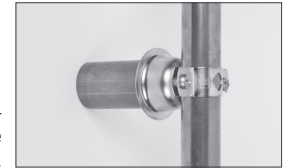


508-3PK

CTS Bell Hanger

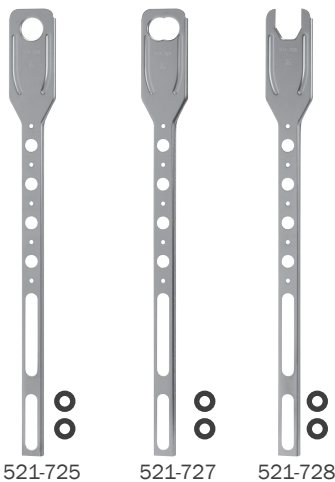
Copper-plated Steel

- 13/16" stand-off
- Includes two clamp screws and one 2 1/2" mounting screw
- Recessed hole for mounting screw



Extend stand-off distance with 1" CTS.

Item No.	Description	Pkg	Min Qty	Case Qty
IMPORTED				
508-2PK	1/2" CTS	C*	25	25
508-3PK	3/4" CTS	C*	25	25
508-4PK	1" CTS	C*	25	25
DOMESTIC				
508-2B	1/2" CTS	B	25	25
508-3B	3/4" CTS	B	25	25
508-4B	1" CTS	B	25	25



521-725

521-727

521-728

Carrier Bracket

Copper-plated

- Channel design extends the entire length of the bracket for maximum strength and rigidity
- Supports water pipe for flush valve 26 1/2" above floor and offsets stub out at 4 1/2" or 4 3/4" from carrier center
- Washers included

Item No.	Description	Gauge	Pkg	Min Qty	Case Qty
521-725	1" CTS hole	16	B	5	5
521-726	1" CTS hole - Domestic	16	B	5	5
521-727	1" CTS double hole	16	B	5	5
521-728	1" CTS notch (for prefab)	16	B	5	5

