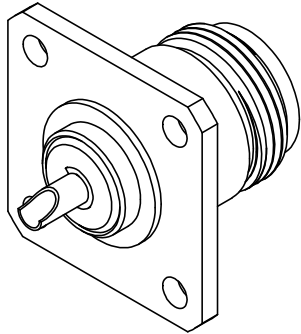
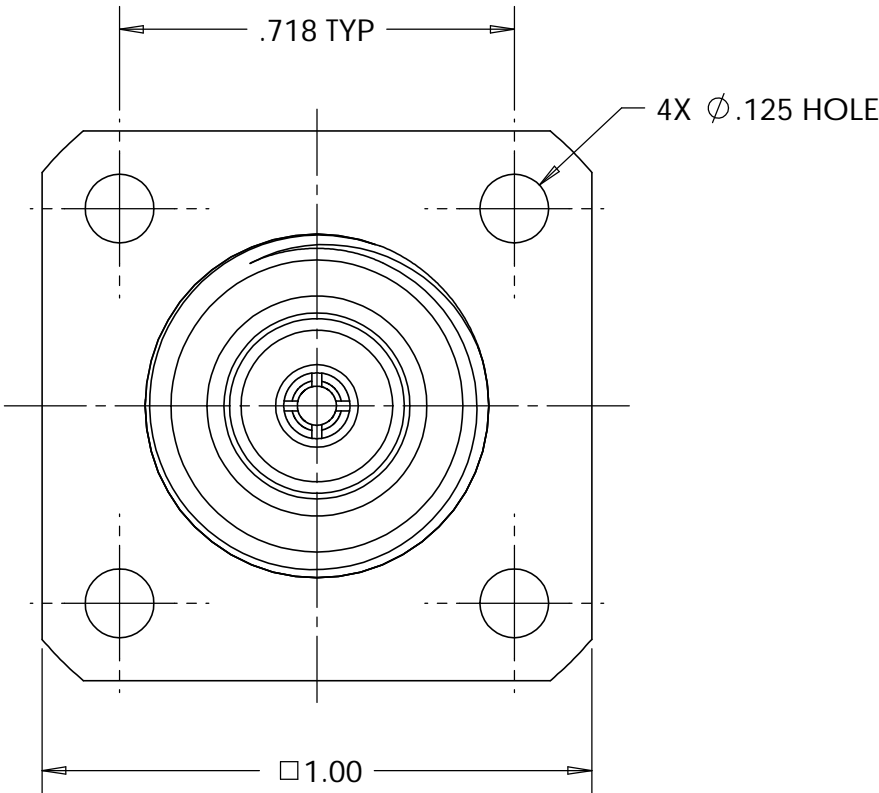
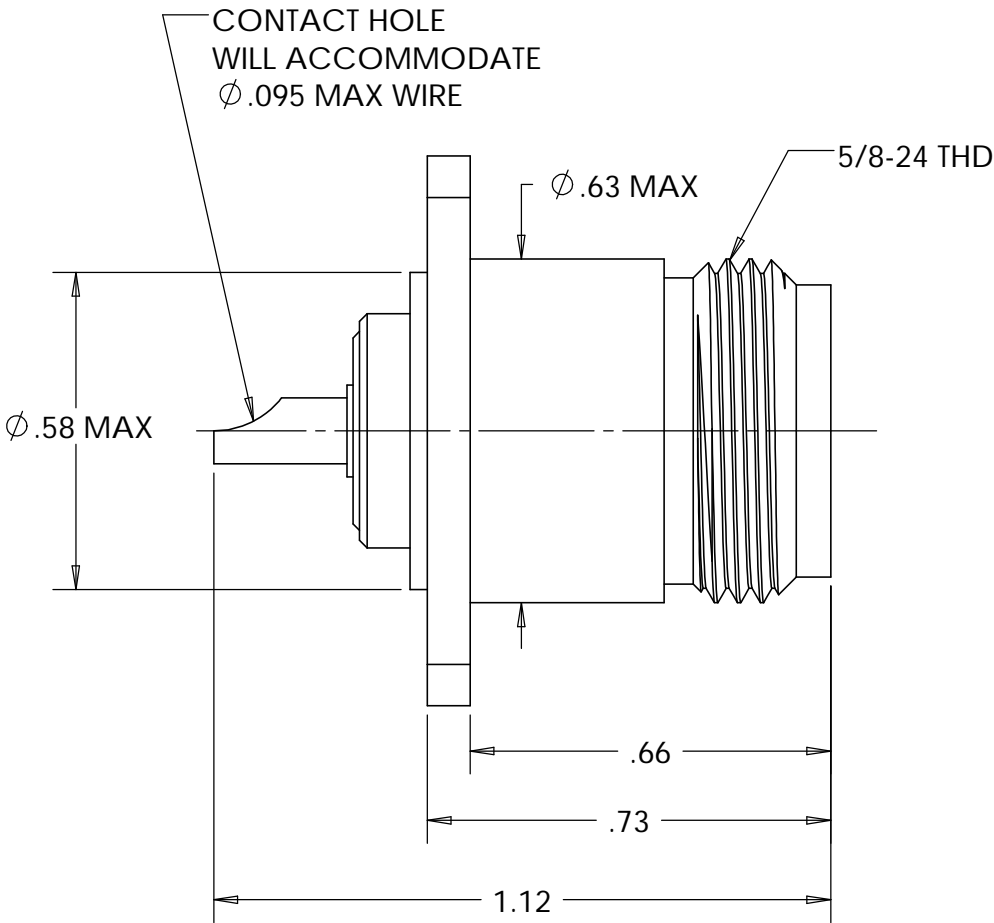


This document, including the design, configuration and mechanical features revealed herein are the sole, confidential and proprietary property of TRU Corporation. Reproduction or use thereof, in whole or part, is prohibited without the prior written consent of TRU Corporation.

REV.	DESCRIPTION	DATE	APPROVED
-	ORIGINAL ISSUE	8/15/96	RMK
A	CHANGED PER ECO 1168	5/5/97	RMK
B	CHANGED PER ECO 2773	3/10/06	DA



ISOMETRIC  
SCALE: 1.5:1




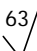
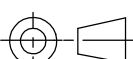
ENGINEERING DATA:

MATERIAL:  
INSULATOR: TEFLON  
CONTACT: BERYLLIUM COPPER  
OUTER SHELL: BRASS

FINISH:  
CONTACT: SILVER PLATED  
OUTER SHELL: NICKEL PLATED

MILITARY DESIGNATION: UG-58A/U  
CONNECTOR MARKING: 92180 UG-58A/U  
TRU CORPORATION PART No: TRU-0158-SNUG

NOTES:  
1. UNLESS OTHERWISE SPECIFIED; ALL  
DIMENSIONS ARE REFERENCE ONLY.

MATERIAL	DO NOT SCALE DRAWING		DRAWN Warren Whitten	DATE 8/15/96	<div><div>TRU CORPORATION 245 LYNNFIELD STREET, PEABODY, MA 01960</div><div>The Custom Interconnect Leader™</div></div>		
	UNLESS OTHERWISE SPECIFIED: DIMENSIONS ARE IN INCHES		ENG APPR. Koch	DATE 8/15/96			
	TOLERANCES: FRACTIONS: ±1/64 .XX : ±.01 .XXX: ±.005 ANGLES: ±1/2°		MFG APPR.	DATE	TITLE:  CONNECTOR, COAXIAL, RF N(f) RECEPTACLE, PANEL		
	MACHINED SURFACES:		OTHER APPR.	DATE			
COMMENTS:	63/ 		THIRD ANGLE PROJECTION 		SIZE B	DWG. NO. TRU-0158-SNUG	REV B
path: S:\Warren - WIP\ECO 2773\							
surface area: sq inch			weight: lbs	CAGE CODE: 92180			SCALE: 3:1