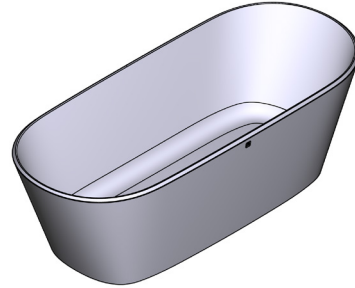


SPECIFICATIONS



VETRALLA™

70" x 30" Freestanding Soaking Bathtub

MODELS: VE3-N-SW-NO, VE3M-N-SM-NO

SHAPE

- Oval

SIZE

- Length: 70" (1778 mm), Width: 29-3/4" (755 mm), Height: 22" (559mm)

MATERIAL

- Volcanic Limestone

DRAIN HOLE

- Centered

WEIGHT

- 172 lbs. (78 kg)

CAPACITY

- 119 gallons (451 Liters)

INSTALLATION TYPE

- Freestanding

DRAIN SET

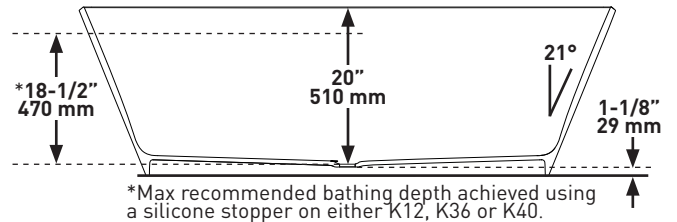
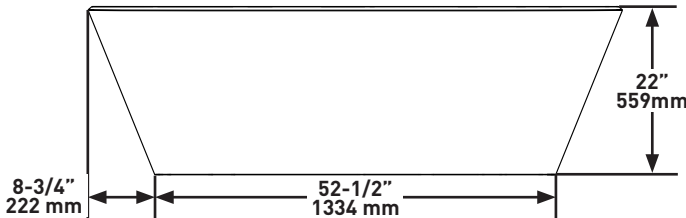
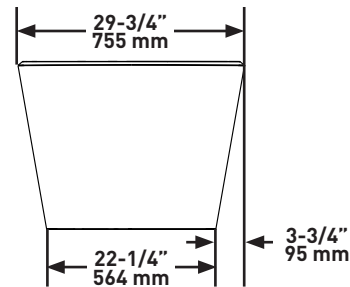
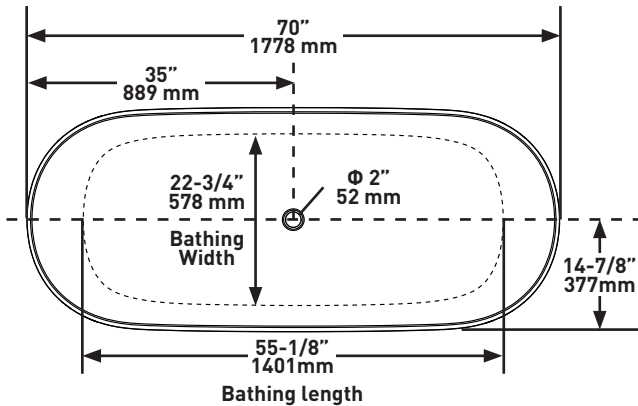
- Drain kit required and sold separately, Order either K12, K36 or K40 to ensure the performance and look is in line with Victoria + Albert standards

STANDARDS

- CSA B45.5:22 / IAPMO Z124-2022

WARRANTY

- Most products or parts carry "Limited Warranties" against manufacturing defects. For US customers please visit houseofrohl.com/support and for Canadian customers please visit houseofrohl.ca/support for complete product and finish warranty.



For warranty or additional information, contact:

U.S.A.
houseofrohl.com/support
 1-800-777-9762

QUEBEC / MARITIMES / WESTERN CANADA
 QUÉBEC / MARITIMES / OUEST CANADIEN
 QUEBEC / MARITIMOS / CANADA OCCIDENTAL
houseofrohl.ca/support
 1-866-473-8442

ONTARIO
houseofrohl.ca/support
 1-800-287-5354



SPÉCIFICATIONS

FORME

- Ovale

DIMENSIONS

- Longueur: 70 po(1778 mm), Largeur : 29-3/4 po(755 mm), Hauteur : 22 po(559 mm)

MATÉRIAU

- Pierre calcaire volcanique blanche

ORIFICE D'ÉVACUATION

- Centré

POIDS

- 78 kg (172 lb)

CAPACITÉ

- 451 litres (119 gallons)

TYPE D'INSTALLATION

- Autonome

ASSEMBLAGE DE DRAIN

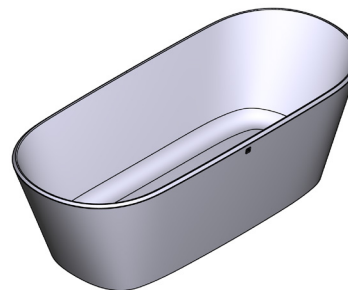
- La trousse de bonde est requise et vendue séparément; commander la trousse K12, K36 ou K40 pour veiller à ce que le rendement et le style du produit correspondent aux normes Victoria + Albert en la matière.

CERTIFICATIONS

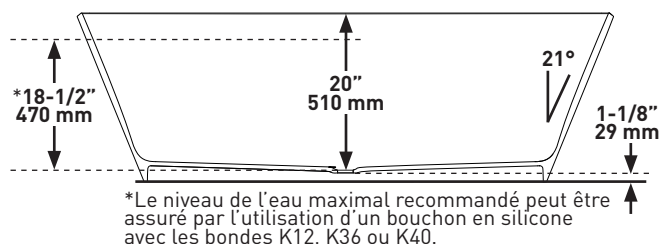
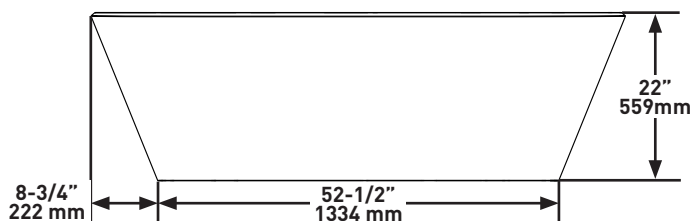
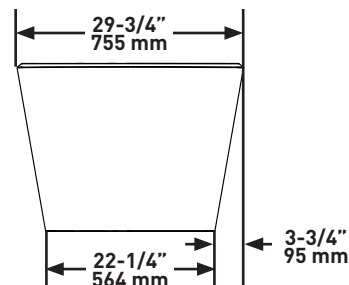
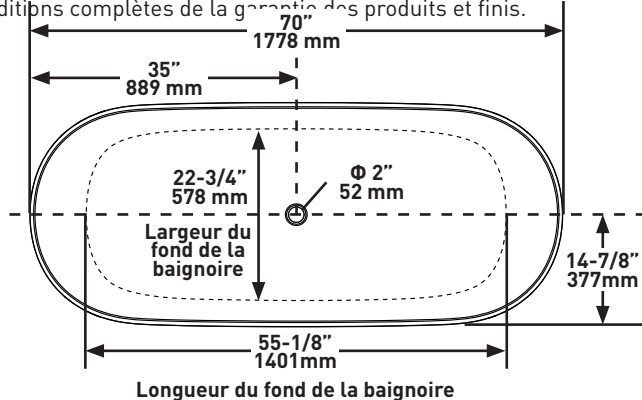
- CSA B45.5:22 / IAPMO Z124-2022

GARANTIE

- La plupart des produits ou pièces comprend des «garanties limitées» contre les défauts de fabrication. Pour les clients des États-Unis : veuillez consulter houseofrohl.com/support; Pour les clients du Canada : veuillez consulter houseofrohl.ca/support pour connaître les conditions complètes de la garantie des produits et finis.

VETRALLA^{MC}

Baignoire autoportante 70" x 30"

MODÈLES : VE3-N-SW-NO, VE3M-N-SM-NO

Si vous souhaitez obtenir de l'information supplémentaire à propos de la garantie ou de tout autre élément, communiquez avec :

U.S.A.
houseofrohl.com/support
 1-800-777-9762

QUEBEC / MARITIMES / WESTERN CANADA
 QUÉBEC / MARITIMES / OUEST CANADIEN
 QUEBEC / MARITIMOS / CANADA OCCIDENTAL
houseofrohl.ca/support
 1-866-473-8442

ONTARIO
houseofrohl.ca/support
 1-800-287-5354

Riobel

PERRIN & ROWE
LONDON

victoria ⊕ albert®

ROHL

FORMA

- Ovalado

TAMAÑO

- Largo: 70" (1778 mm), Ancho: 29-3/4" (755mm),
Altura: 22" (559 mm)

MATERIAL

- Piedra caliza volcánica

AGUJERO DEL DESAGÜE

- Centrado

PESO

- 172 lb (78 kg)

CAPACIDAD

- 119 galones (451 litros)

TIPO DE INSTALACIÓN

- Sobrepuesta

JUEGO DE DESAGÜE

- El kit de drenaje requerido se vende por separado. Ordene el kit K12, K36 o K40 para asegurar que el rendimiento y el estilo correspondan con los estándares Victoria + Albert.

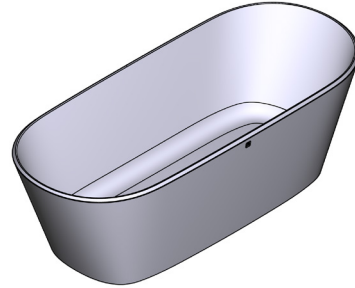
ESTÁNDARES

- CSA B45.5:22 / IAPMO Z124-2022

GARANTÍA

- La mayoría de los productos o piezas cuentan con "Garantías Limitadas" por defectos de fabricación. A los clientes en EE. UU. se les recomienda visitar houseofrohl.com/support y a los clientes en Canadá, houseofrohl.ca/support, para consultar las condiciones completas de la garantía de los productos y acabados.

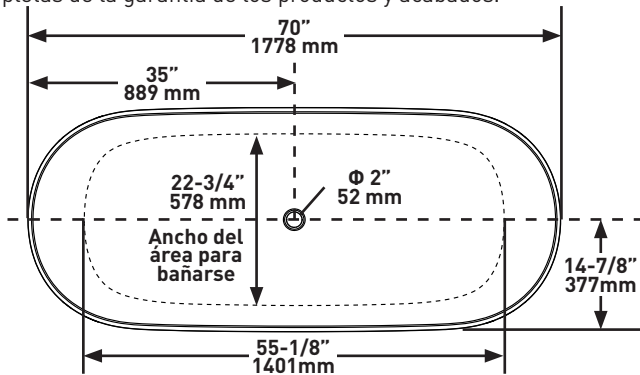
ESPECIFICACIONES



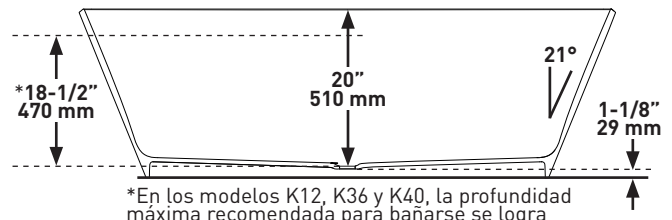
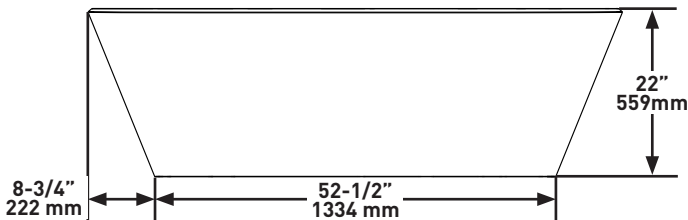
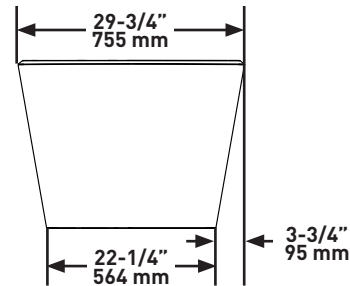
VETRALLA™

Tina de baño sobrepuesta de 70" x 30"

MODELOS: VE3-N-SW-NO, VE3M-N-SM-NO



Longitud del fondo de la bañera



*En los modelos K12, K36 y K40, la profundidad máxima recomendada para bañarse se logra utilizando un tapón de silicón.

Para preguntas sobre la garantía o para obtener más información, favor de comunicarse con:

U.S.A.
houseofrohl.com/support
1-800-777-9762

QUEBEC / MARITIMES / WESTERN CANADA
QUÉBEC / MARITIMES / OUEST CANADIEN
QUEBEC / MARITIMOS / CANADA OCCIDENTAL
houseofrohl.ca/support
1-866-473-8442

ONTARIO
houseofrohl.ca/support
1-800-287-5354