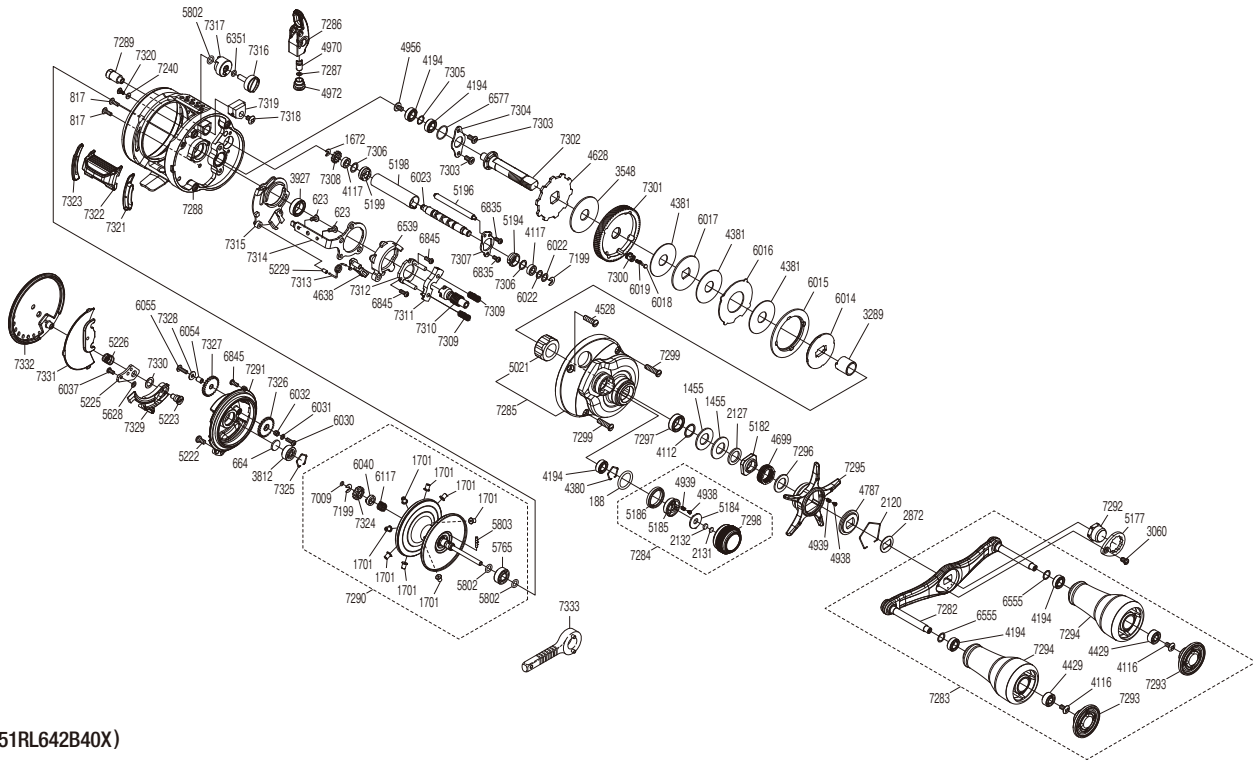


SHIMANO

CALCUTTA CONQUEST MD

23CQMD300XLH



(51RL642B40X)

#	Part No.	Description	#	Part No.	Description	#	Part No.	Description
118	109EB	O Ring	5222	10LSL	Screw	7292	101AS	Handle Nut
623	103C0	Screw	5223	10GM6	B Side Plate Insert	7293	13YKA	Handle Knob Seal
664	1057S	Spacer B	5225	10AYX	Damper Bush	7294	13YKB	Handle Knob
817	10MPW	Screw	5226	10KNA	Drag Spring	7295	13V35	Star Drag
1455	1052E	Drag Spring Washer (H)	5229	108S5	Clutch Pawl Spring Collar	7296	10QXM	Washer
1672	105NC	E Lock	5628	10280	Washer	7297	105BS	Ball Bearing
1701	10CPE	Brake Collar (Gray)	5765	105CA	Ball Bearing	7298	13YKC	Cast Control Cap
2120	10KXV	Click Plate Retainer	5802	10TNF	O Ring	7299	13MBW	Screw
2127	10J1N	Star Drag Spacer	5803	10MD0	Spool Clutch Pin	7300	13VG9	Drag Click Pin Holder
2131	10897	Cast Control Spacer	6014	10D54	Pressure Plate	7301	13UY9	Drive Gear
2132	1085G	Cast Control Spacer	6015	10JAZ	Drag Click Ratchet	7302	13YKD	Drive Shaft
2872	107QQ	Drive Shaft Shield	6016	10KQL	Eared Washer	7303	1055F	Screw
3060	10CZ5	Screw	6017	10LB6	Drag Washer	7304	13VAE	Drive Shaft Retainer
3289	10BN7	Roller Clutch Inner Tube	6018	10C0S	Drag Click	7305	13Y0Z	Washer
3548	10CHZ	Drag Washer	6019	10J89	Click Spring	7306	10G8F	Washer
3812	105C1	Ball Bearing	6022	10J16	Washer	7307	13SCJ	Worm Bushing Retainer
3927	10EX8	Ball Bearing	6023	10T05	Worm Shaft	7308	13S6P	Idle Gear C
4112	10J4J	Washer	6030	10LVM	Screw	7309	13T1T	Yoke Spring
4116	103E9	Screw	6031	10HVD	Washer	7310	13S0Q	Pinion Gear
4117	10PXY	Bushing	6032	10ECQ	Idle Gear B Support	7311	13T1S	Yoke
4194	105BP	Ball Bearing	6037	10U0S	Screw	7312	13UEP	Clutch Cam Retainer
4380	1057X	Retainer	6040	10MCY	Spool Shaft Cam	7313	13YKE	Clutch Pawl Spring
4381	10CHW	Drag Washer	6054	10TUH	Idle Gear D Support	7314	13TDK	Clutch Plate
4429	10KX2	Ball Bearing	6055	10TTU	Screw	7315	13UEN	Clutch Guard
4528	10A6X	Screw	6117	10E20	Spool Shaft Spring	7316	13YKF	Br Dial
4628	10D6Y	Anti-Reverse Ratchet	6351	10CFZ	O Ring	7317	13YKG	Brake Cam
4638	105ZU	Clutch Pawl	6539	10SX6	Clutch Cam	7318	103L4	Screw
4699	10A71	Star Drag Spring	6555	104FH	Washer	7319	13YKH	Brake Holder
4787	10J1Y	Star Drag Click Plate	6577	10S24	O Ring	7320	13JWQ	Screw
4938	10B27	Click Pin	6835	10LVF	Screw	7321	13TDM	Clutch Bar Guide B
4939	10988	Click Spring	6845	101CN	Screw	7322	13H6M	Clutch Button Assembly
4956	10PVT	Screw	7009	10E7H	O Ring	7323	13TDL	Clutch Bar Guide A
4970	10FFT	Line Guide Pawl	7199	105NK	E Lock	7324	13S5W	Idle Gear A
4972	10FJC	Pawl Cap	7240	13Y8G	Washer	7325	10GEW	Bearing Retainer
5021	10F33	Roller Clutch Bearing	7282	13YK2	Handle Shank Assembly	7326	13RUX	Idle Gear B
5177	10Q66	Handle Nut Plate	7283	13YK3	Handle Assembly	7327	13S6N	Idle Gear D
5182	10A3V	Star Drag Nut	7284	13YK4	Cast Control Cap Assembly	7328	13PKE	Washer
5184	10L2E	Cast Control Click Plate	7285	13YK5	A Side Plate Assembly	7329	13RNS	B Side Plate Cam Lever
5185	10BSX	Click Pin Holder	7286	13GH8	Line Guide Pawl Holder Assembly	7330	13YKJ	Washer
5186	10L70	Cast Control Click Holder	7287	13GUU	Washer	7331	13YKK	B Side Plate Seal
5194	10N9Q	Worm Bushing A	7288	13YK6	Frame Assembly	7332	13YKL	B Side Plate
5196	10GUG	Level Wind Guide	7289	13YK7	Magnet Holder Assembly			
5198	10NFW	Level Wind Guard	7290	13YK8	Spool Assembly			
5199	104SP	Worm Bushing B	7291	13YK9	Dial Case Assembly	7333	10NC0	Wrench (Accessory)

Please note that the number of adjusting washers may not be the same as shown in the exploded views.
(Adjustment will vary with each individual product.)

(240620)_004