

# F1960 Poly PEX Manifold Open End

Job Name	_____
Location	_____
Engineer	_____
Contractor	_____
Tag	_____ PO# _____

### Specifications

Manufactured to the highest industry standards, Jones Stephens' F1960 cold expansion fittings provide precise, secure, and leak-free connections. Made with strong polymer material, F1960 cold expansion fittings are corrosion and chlorine/chemical resistant – making them a great fit for aggressive water environments. Approved for use with PEX-A piping. Can be used with F1960 PEX rings. Comes with 1/2" branch outlets.



### Applications

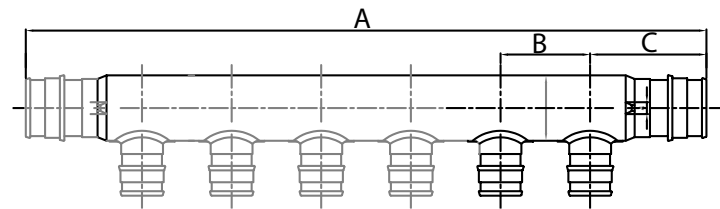
Jones Stephens' F1960 Poly PEX Manifolds are approved for use with commercial and residential non-potable water applications.

### Materials

Polymer construction. Manufactured of premium-grade resin with non-mixed blends.

### Certifications/Listings/Approvals

- ASTM F1960-2018a
- ASTM F877-2020
- NSF/ANSI/CAN 61-2022
- NSF/ANSI 14-2016
- NSF/ANSI/CAN 372-2022



C

	ID	OD
<b>F1960 Specified Dimensions</b>	<b>in (mm)</b>	<b>in (mm)</b>
1/2" End Connection	.40(10.20)	.61(15.59)
3/4" End Connection	.61(15.60)	.87(22.10)
1" End Connection	.82(20.80)	1.11(28.10)
1-1/4" End Connection	.97(24.64)	1.36(35.54)
1-1/2" End Connection	1.08(27.43)	1.49(37.85)
2" End Connection	1.48(37.59)	2.08(52.82)

**PRODUCT OFFERING ON PAGE 2**

**Dimensions and Product Offering**

PART NO.	SIZE	A - IN (MM)	A TOLERANCE ±IN(MM)	B - IN (MM)	B TOLERANCE ±IN(MM)	C - IN (MM)	C TOLERANCE ±IN(MM)	WEIGHT - LBS (G)	WEIGHT TOLERANCE ±LBS (G)
<b>F76001</b>	0.75", 2-Port	4.57 (116.13)	0.29 (7.42)	1.22 (30.99)	0.03 (0.76)	1.67 (42.51)	0.13 (3.39)	0.06 (27.22)	0.01 (2.27)
<b>F76002</b>	0.75", 3-Port	5.79 (146.99)	0.33 (8.31)	1.22 (30.99)	0.03 (0.76)	1.67 (42.51)	0.13 (3.39)	0.08 (36.29)	0.01 (2.27)
<b>F76006</b>	0.75", 4-Port	7.01 (177.98)	0.37 (9.07)	1.22 (30.99)	0.03 (0.76)	1.67 (42.51)	0.13 (3.39)	0.10 (45.36)	0.01 (2.27)
<b>F76007</b>	0.75", 6-Port	9.03 (229.40)	-	1.19 (30.20)	-	1.54 (39.20)	-	0.15 (68.04)	-