

# CASABLANCA<sup>®</sup> FAN COMPANY

## CEILING FAN REMOTE ADD-ON RECEIVER

### Model 99199

Rated for ceiling fan max load of 1 amp.  
Rated for light wattage of max 300 watts.

The Casablanca Add-On Receiver works with Casablanca pull chain fans and requires a compatible transmitter (sold separately).

### CASABLANCA FAN COMPANY CONTROL LIMITED WARRANTY

This product is warranted to the original purchaser by Casablanca Fan Company against defects in material and workmanship for one (1) year from date of purchase. During the warranty period, we will repair or, at our option, replace a defective product at no charge. For information on how to obtain service, contact Casablanca's Service Department by calling our toll-free number at 1-888-227-2178. Damage to the product caused by mishandling, improper installation or modification is not covered by this warranty. This warranty is given in lieu of all other warranties expressed or implied. Some states do not allow limitations of time on an implied warranty, therefore the above limitations may not apply in every case. This warranty states specific legal rights which may vary from state to state.

### READ AND SAVE THESE INSTRUCTIONS

This product conforms to UL Standard 1917.

### ⚠ WARNINGS

This device complies with part 15 of the FCC Rules. Operation is subject to the following two conditions: (1) this device may not cause harmful interference, and (2) this device must accept any interference received, including interference that may cause undesired operation.

This device complies with RSS-210 of Industry Canada. Operation is subject to the following two conditions: (1) this device may not cause interference, and (2) this device must accept any interference, including interference that may cause undesired operation of the device.

This equipment has been tested and found to comply with the limits for a Class B digital device, pursuant to Part 15 of the FCC Rules. These limits are designed to provide reasonable protection against harmful interference in a residential installation. This equipment generates, uses and can radiate radio frequency energy and, if not installed and used in accordance with the instructions, may cause harmful interference to radio communications. However there is no guarantee that interference will not occur in a particular installation. If this equipment does cause harmful interference to radio or television reception, which can be determined by turning the equipment off and on, the user is encouraged to try to correct the interference by one or more of the following measures: Reorient or relocate the receiving antenna, Increase the separation between the equipment and receiver, Connect the equipment into an outlet on a circuit different from that to which the receiver is connected. Consult the dealer or an experienced radio/TV technician for help. Note: Any changes or modifications to the transmitter or receiver not expressly approved by Hunter Fan Company may void one's authority to operate this remote control.

#### If you are installing multiple remote-controlled fans on the same circuit breaker,

you may need to perform a few extra steps to prevent interference or faulty operation of your remote controls.

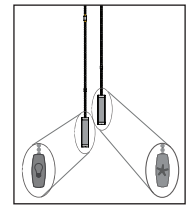
Go to [www.CasablancaFanCo.com/FAQs](http://www.CasablancaFanCo.com/FAQs) and click "How do I properly install multiple remote-controlled fans?" for more information.



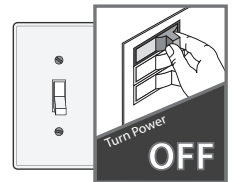
To avoid possible electrical shock, before installing or servicing your fan, disconnect the power by turning off the circuit breakers to the outlet box and associated wall switch location. If you cannot lock the circuit breakers in the off position, securely fasten a prominent warning device, such as a tag, to the service panel.

## INSTALLATION

- 1 Prepare fan**  
Use the pull chains to set the fan speed to **HIGH** and the light to **ON**.



- 2 Turn off the power**  
Ensure the power is **OFF** at the outlet box and wall switch location before proceeding with installation.



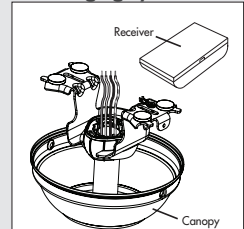
- 3 Remove the canopy**  
If uncertain how to remove it, reference the fan's owner's manual. With wiring exposed, you may wish to note existing wire connections or take a photo for reference. **Remove the wire connectors that connect the wires from the outlet box to the fan, leaving the grounding wires connected.**

- 4 Install the receiver**  
Choose the hanging system to the right that most closely resembles the one used by your fan and place the receiver as shown.

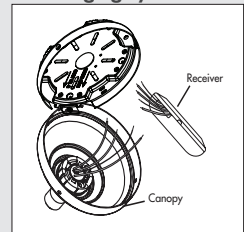
**WARNING:** This receiver cannot be installed in conjunction with any other receiver or hard-wired wall control. Doing so will void your warranty.

**Note:** If your canopy is crowded with excess wire, you may wish to cut the excess fan wires. Leave a minimum of 8 inches remaining. Strip the fan lead wires 1/2 inch. Place remaining excess wire into the ceiling electrical box. **The bracket and fan must remain properly grounded.**

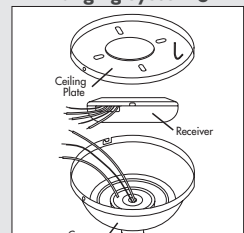
#### Hanging System 1



#### Hanging System 2

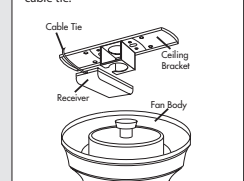


#### Hanging System 3



#### Hanging System 4

For low profile fans, the receiver should be secured to the ceiling bracket with a cable tie.



# 5

## Wiring the Add-On Receiver

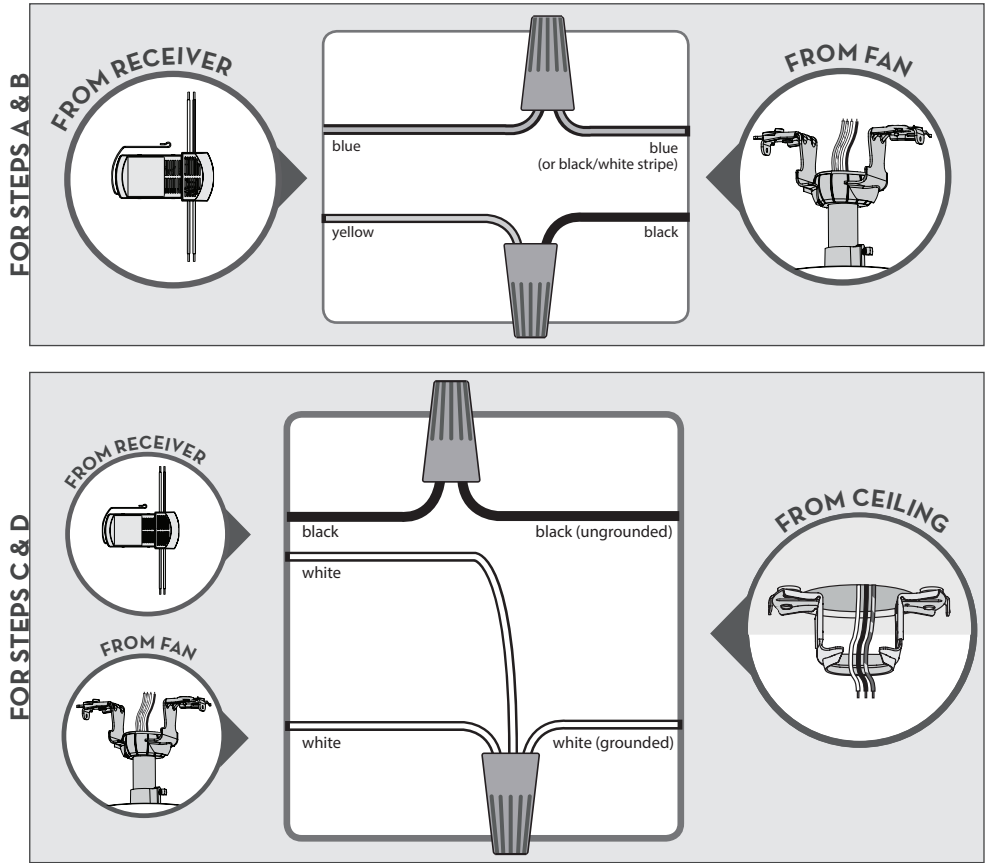
Use the included wire connectors to perform the connections below.

- A. Connect the blue wire from the receiver to the light wire (blue or possibly black with white stripe) from the fan.
- B. Connect the yellow wire from the receiver to the motor wire (black) from the fan.
- C. Connect the black wire (ungrounded) from the ceiling to the black wire from the receiver.
- D. Connect the white wire (grounded) from the ceiling to both the white wire from the receiver and the white wire from the fan.

*If you're uncertain about wire colors or connections, please contact a qualified electrician.*



Turn the splices upward and push them carefully back through the hanger bracket into the outlet box. Spread the wires apart, with the grounded wires on one side of the outlet box and the ungrounded wires on the other side of the outlet box.

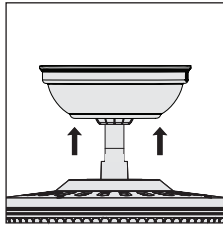


# 6

## Reinstall Canopy

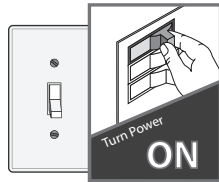
After all wires are connected and secured with wire connectors, **reinstall the canopy**.

*If uncertain how to install the canopy, reference the fan's owner's manual.*



# 7

## Turning on the power



# 8

Pair your receiver to a compatible Casablanca wall control or handheld remote (sold separately).

Follow the pairing instructions included with your Casablanca wall control or handheld remote instructions.

