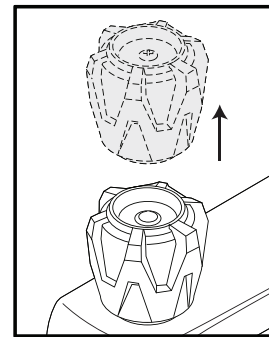
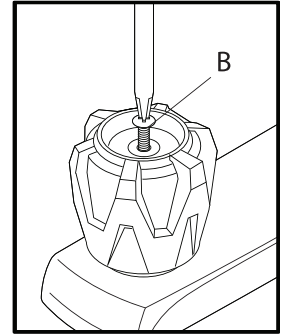
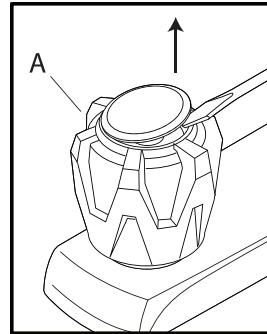


# INSTRUCTIONS FOR 2-HANDLE STEM FITS MOEN®

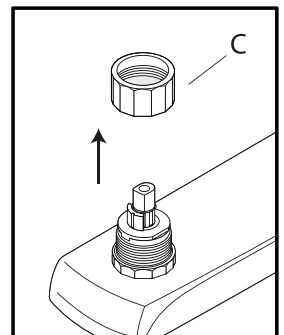
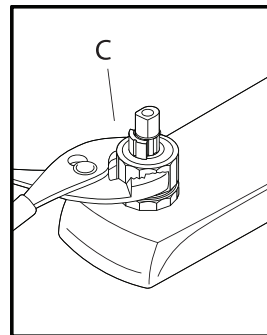
English

Note: Your faucet may not match illustration, your instruction may vary.

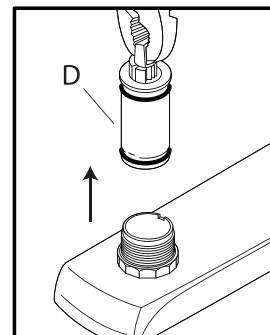
1. Turn off water to faucet.
2. Remove handle (A) using a screwdriver to remove screw (B).



3. With wrench or pliers remove bonnet nut (C) in counter-clockwise direction. Use care not to scratch decorative part.



4. Pull cartridge (D) out of faucet body.

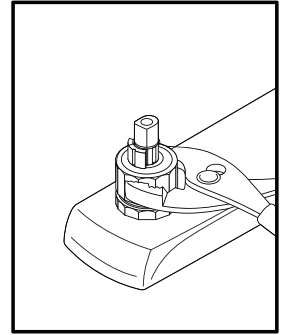
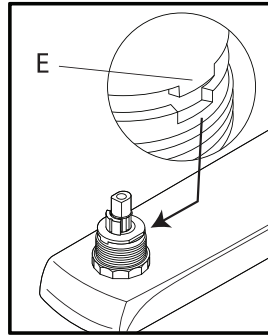


Continued on next page

# INSTRUCTIONS FOR LOCK CLIP & SEALS FITS MOEN®

English

5. Replace old cartridge with new, note slot must align with recess in faucet body (E) to operate and seal properly.
6. Reassemble faucet in reverse order.
7. Turn on water to faucet, check for leaks.

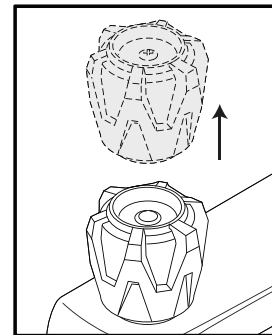
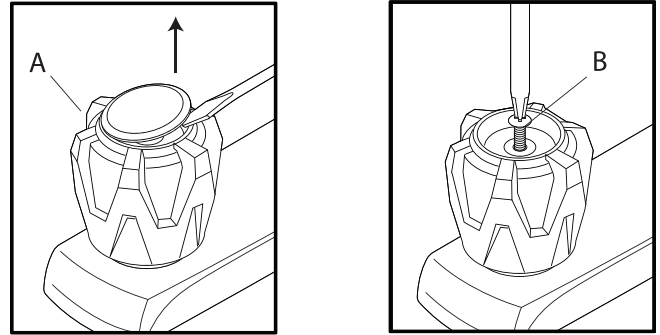


# INSTRUCCIONES PARA VÁSTAGO PARA 2 MANIJAS, SE ADAPTA A MOEN®

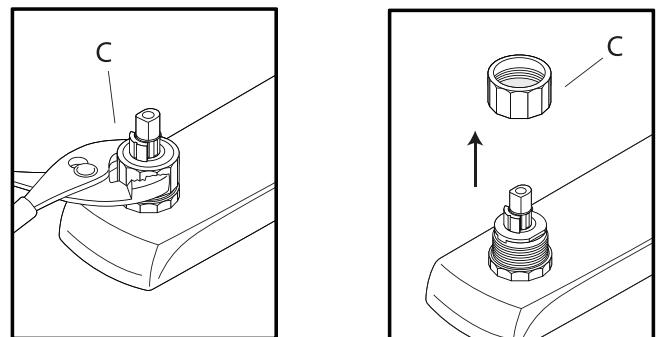
Español

Nota: Es posible que su grifo no coincida con la ilustración; sus instrucciones pueden ser diferentes.

1. Cierre el agua del grifo.
2. Quite la manija (A) con un destornillador para quitar el tornillo (B).



3. Con una llave o alicates, retire la tuerca del bonete (C) girando hacia la izquierda. Tenga cuidado de no rayar esta parte decorativa.

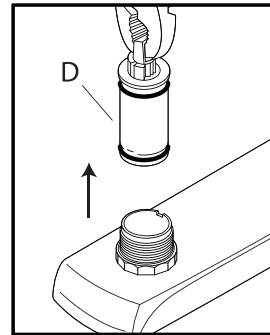


Continúa en la siguiente página

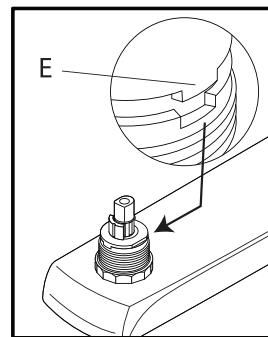
# INSTRUCCIONES PARA VÁSTAGO PARA 2 MANIJAS, SE ADAPTA A MOEN®

Español

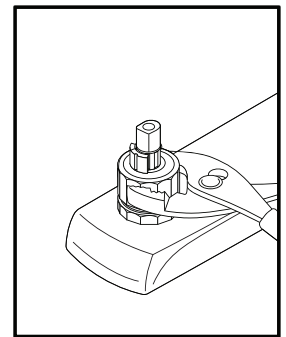
4. Extraiga el cartucho (D) del cuerpo del grifo.



5. Reemplace el cartucho usado por uno nuevo. Note que la ranura debe estar alineada con el hueco en el cuerpo del grifo (E) para operar y sellar correctamente.



6. Vuelva a montar el grifo en orden inverso.



7. Abra el grifo del agua y verifique que no haya fugas.