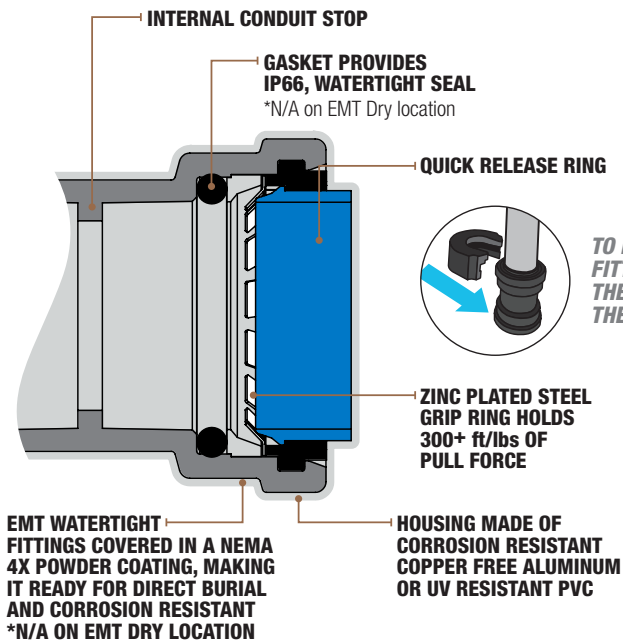


## EMT LB BODIES

Southwire® SIMPush™ EMT conduit bodies are used as junction or pull boxes and are usually installed in an EMT conduit system to facilitate a change in direction.

### FEATURES:

- Corrosion-resistant copper-free diecast aluminum construction
- Provides continuous ground
- Internally coated with lubricating grease
- Tested to 100 removal cycles for reuse
- Locking teeth are constructed from zinc-plated steel
- Body door is domed aluminum construction with zinc-plated steel screws



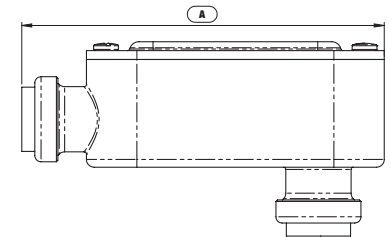
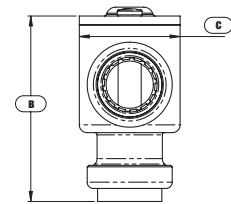
## 1/2" – 2"



**CERTIFICATIONS/RATINGS:**  
**E-FILE #: E474806**



DFTLB050, DFTLB075, DFTLB100,  
DFTLB125, DFTLB150, DFTLB200



Stock #	Model #	Trade Size	Quantity Per Box	H (in.) A	W (in.) B	L (in.) C	Associated Removal Tool Model #	Removal Tool Included
<b>CONTRACTOR PACK</b>								
65074002	E-LB-050W	1/2"	8	4.67	2.521	1.31	E-RT-1P	-
65074102	E-LB-075W	3/4"	6	5.505	2.855	1.53	E-RT-1P	-
65074202	E-LB-100W	1"	4	6.216	3.151	1.74	E-RT-P2	-
65074302	E-LB-125W	1-1/4"	3	8.064	4.212	2.49	E-RT-P2	-
65074402	E-LB-150W	1-1/2"	3	8.335	4.633	2.49	E-RT-P3	-
65074502	E-LB-200W	2"	1	10.756	5.478	3.1	E-RT-P3	-

Project Name:

Contractor:

Address:

**BUILT FOR DURABILITY.  
BUILT FOR RELIABILITY.  
BUILT FOR WORK.™**

1-855-798-6657 | [SOUTHWIRETOOLS.COM](http://SOUTHWIRETOOLS.COM)

©2020 Southwire Company, LLC. All rights reserved.  
\*Registered Trademark & ™ Trademark of Southwire Company, LLC.