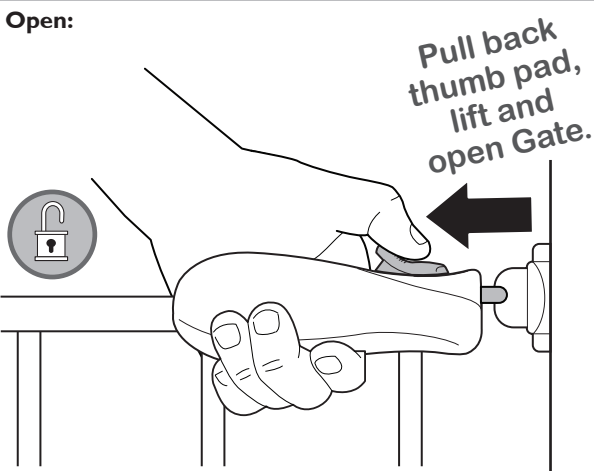
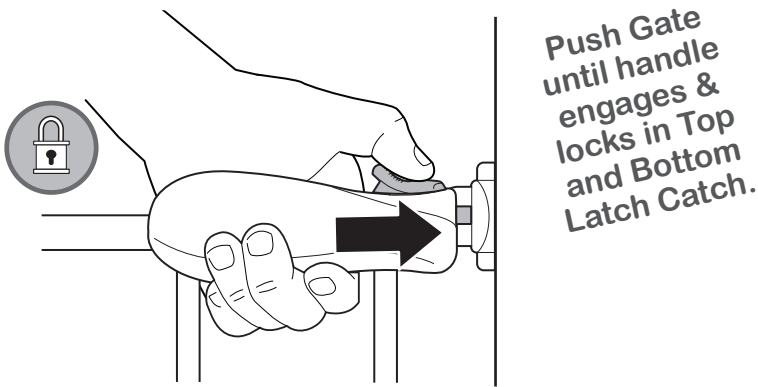


gate operation:

To Open:



To Close:



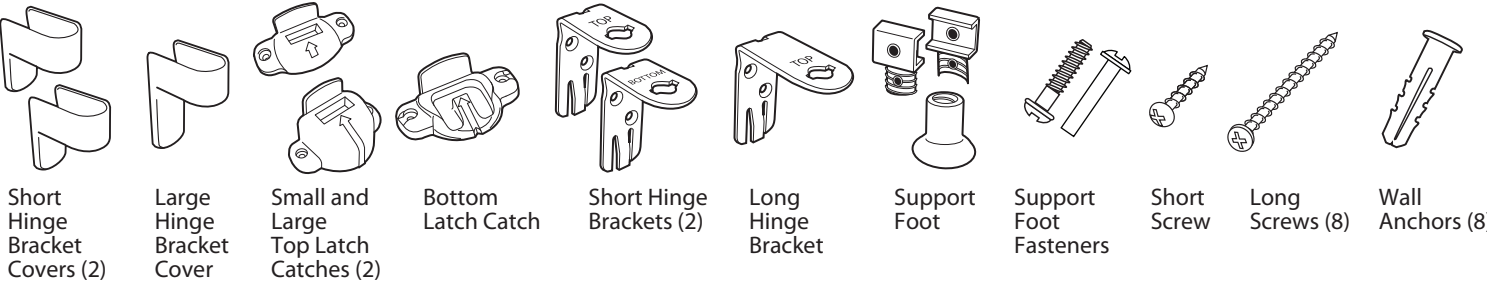
to remove gate from opening:

Swing gate open until it is perpendicular to opening and lift gate out of hinge brackets.

maintenance:

- Check all hardware to ensure gate is securely in place.
- Do not use gate if any of the components are damaged or missing.
- Wipe surface with a damp cloth or sponge, using mild detergent and warm water to clean. Towel dry.

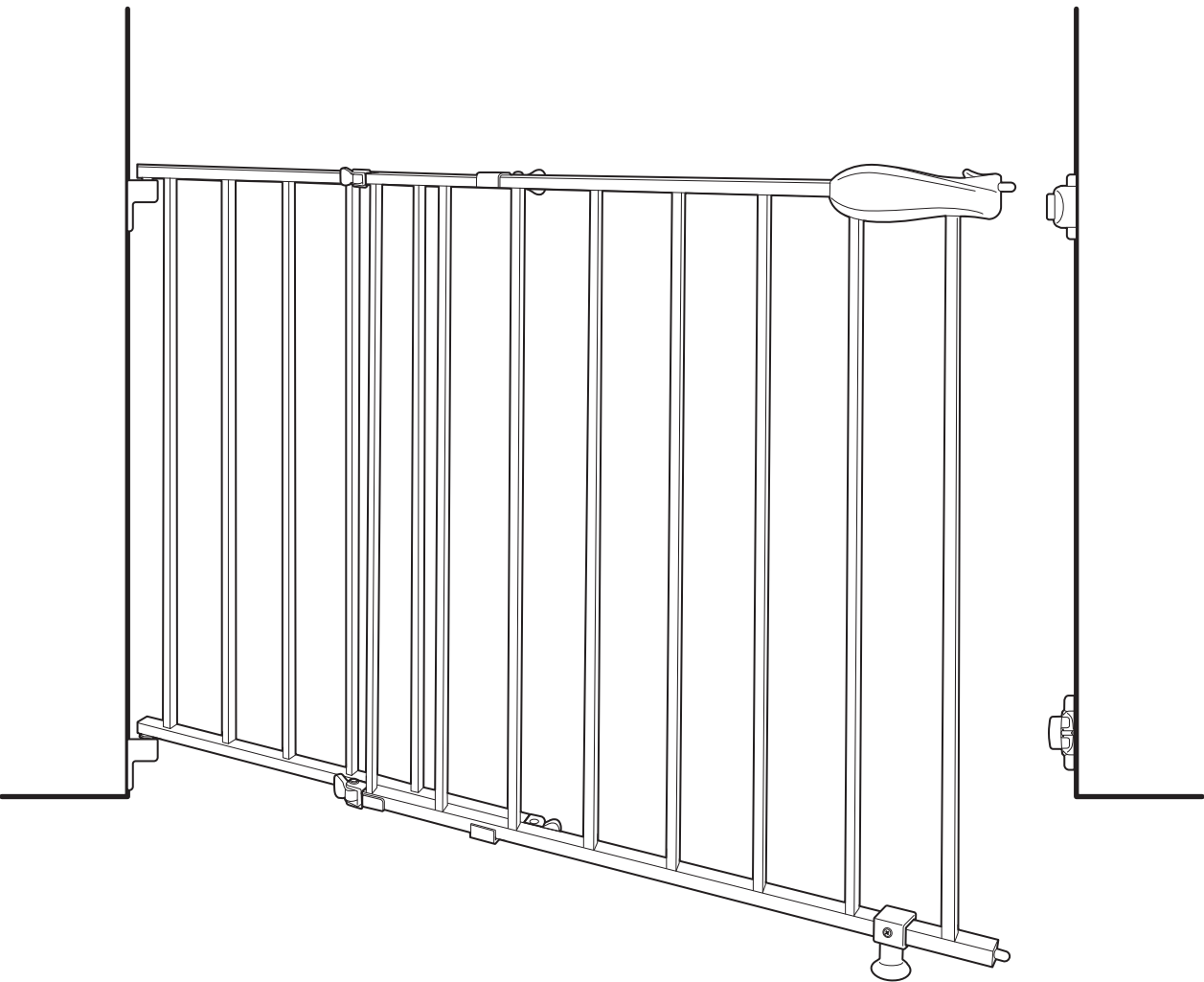
replacement hardware kit #27210-10:



Precision Fit Template



Please read the following instructions carefully.
Keep this instruction manual and save for future reference.
Tools required: Phillips head screwdriver and drill (neither included).
For technical support, contact us at **1-401-671-6551**
or **www.summerinfant.com/contact**
For use with children from 6 - 24 months.
Keep small parts away from children.
Adult assembly required.
Fits openings from 29" (74cm) - 42" (107cm) wide.



Top of Stairs Simple-to-Secure Metal Gate
INSTRUCTION MANUAL

We're here to help! If you have questions or need assistance,
please contact our Consumer Relations Team at **1-401-671-6551** or **www.summerinfant.com/contact**

Summer Infant (USA), Inc.
1275 Park East Drive
Woonsocket, RI 02895 USA
1-401-671-6551
© 2020 Summer Infant (USA), Inc.

Colors and styles may vary.
MADE IN CHINA.
D0000000843_10.20

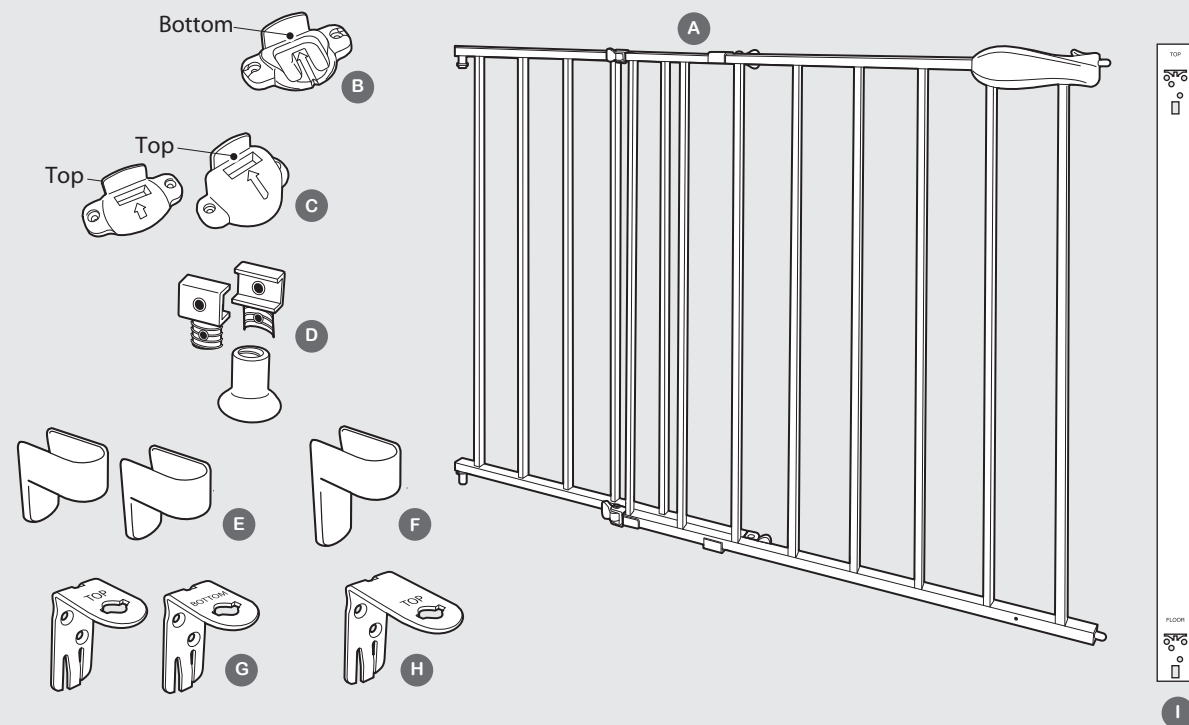
⚠ WARNING

Children have died or been seriously injured when gates are not securely installed.

- **ALWAYS** install and use gate as directed using all required parts. Install according to manufacturer's instructions.
- Stop using when a child can climb over or dislodge the gate.
- Use only with the locking/latching mechanism securely engaged.
- Check daily that gate components are securely attached to the wall.
- **NEVER** use a gate to keep child away from pool.
- **NEVER** leave child unattended.
- **ALWAYS** close and lock the gate behind you.
- This product will not necessarily prevent all accidents. Proper adult supervision is required at all times.
- Do not use if any components are missing or damaged.
- Adult assembly required. Exercise care when unpacking and assembling product.

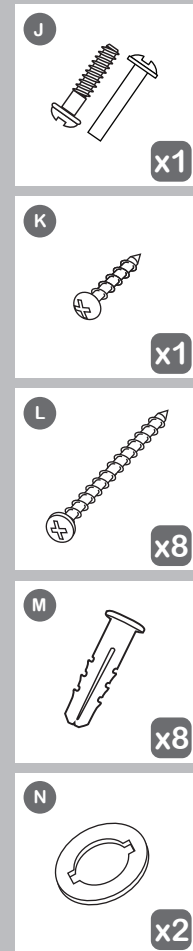
⚠ **CAUTION:** Keep small parts out of child's reach.

components:



- | | |
|--|---------------------------------|
| A Gate | H Long Hinge Bracket |
| B Bottom Latch Catch | I Precision Fit Template |
| C Small and Large Top Latch Catches (2) | J Support Foot Fasteners |
| D Support Foot | K Short Screw |
| E Short Hinge Bracket Covers (2) | L Long Screws (8) |
| F Large Hinge Bracket Cover | M Wall Anchors (8) |
| G Short Hinge Brackets (2) | N Plastic Inserts (2) |

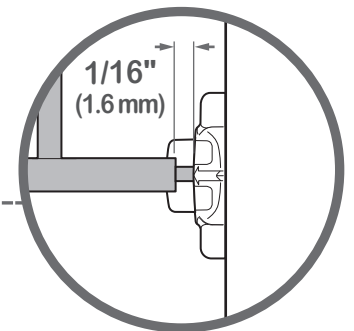
hardware:



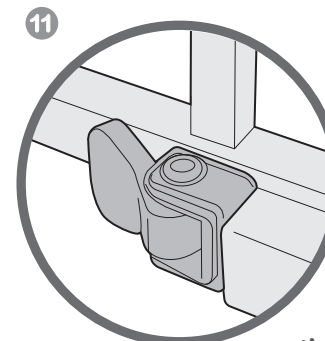
gate installation (continued):

Swing Gate closed, then extend Gate until the handle is engaged.

There should be 1/16" (1.6 mm) space between the Gate and the Bottom Latch Catch.

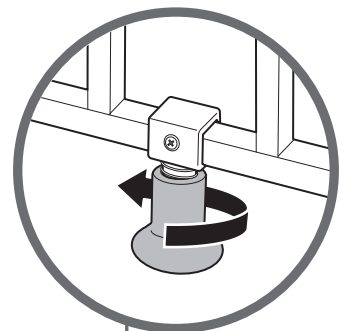


10



Lock all 4 Cam Locks.

Adjust Support Foot. It should be gently contacting the floor when gate is closed.



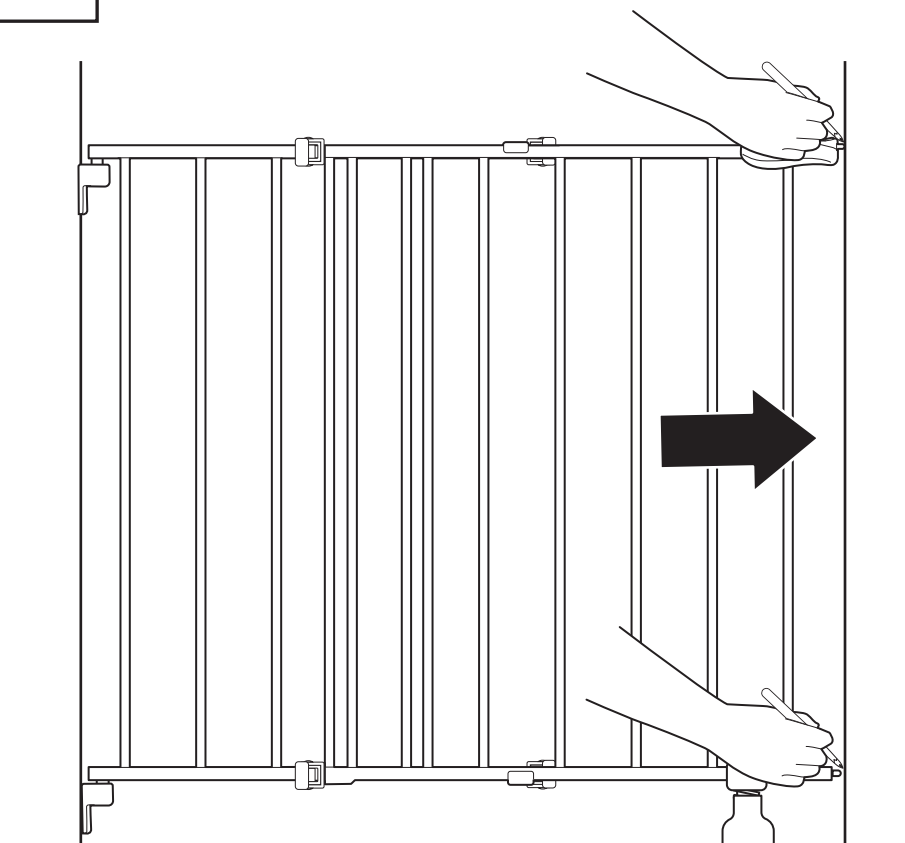
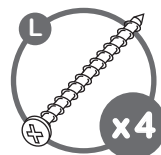
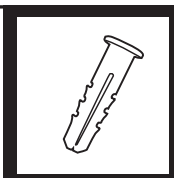
FINISHED!

7

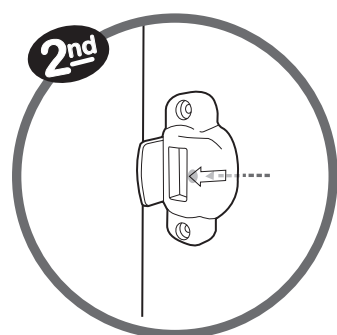
gate installation (continued):

IMPORTANT:
The Gate should never open over the stairs. The protrusion on the latch will prevent the gate from swinging both ways.

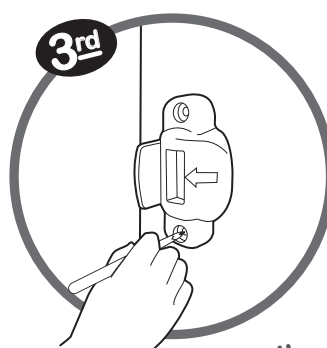
IMPORTANT:
If mounting into wallboard, use a 7/32" (5.5 mm) drill bit for the pilot holes and the Wall Anchors provided (part M).



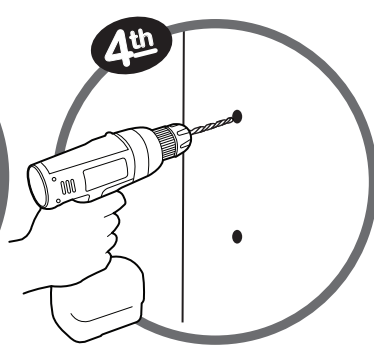
1st
Extend Gate fully to the opposite wall. Mark with a pencil where the latch touches wall.



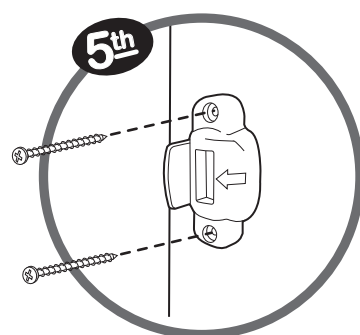
2nd
Use your pencil to mark the arrow on the Top Latch Catch to properly align.



3rd
Mark with a pencil through the screw holes in the Top Latch Catch.



4th
Pre-drill pilot holes using a 3/32 (2.4 mm) drill bit.

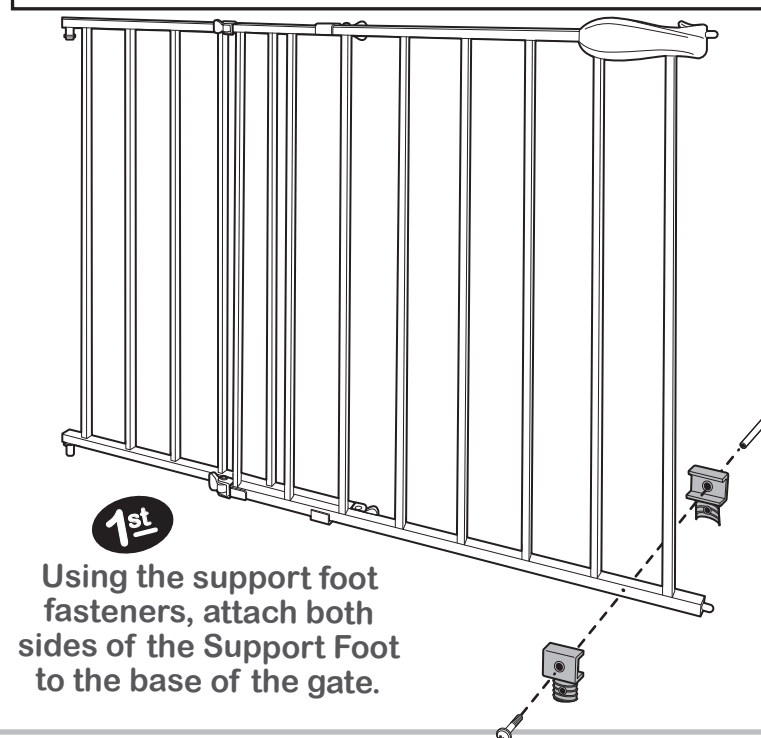


5th
Attach the Top Latch Catch using 2 Long Screws (part L). If attaching to a wall with a baseboard, use the Large Top Latch Catch (part C).

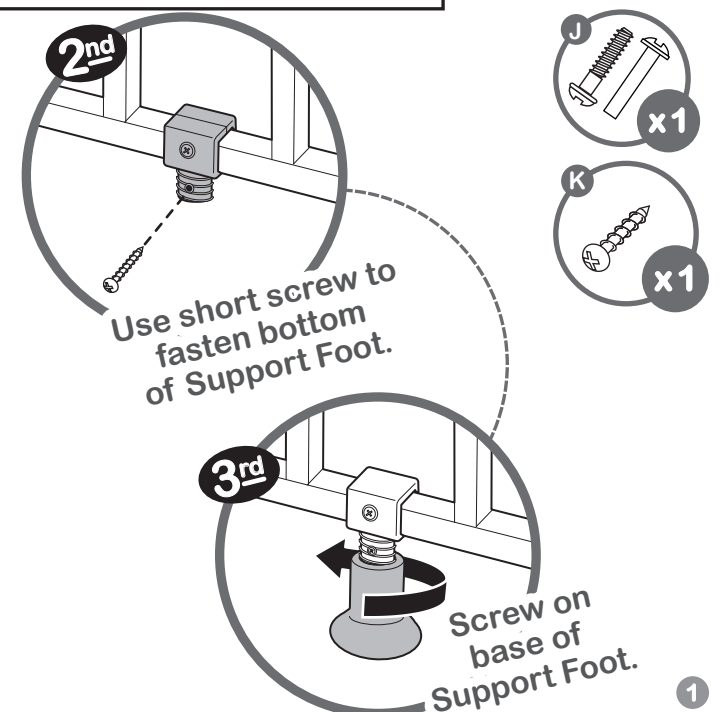
!
Repeat this step with Bottom Latch Catch.

gate installation:

IMPORTANT:
At the top of the landing, position the gate a minimum of 3-6 inches (8-15cm) away from the top step.

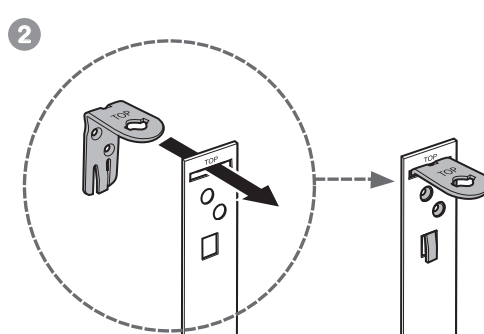


1st
Using the support foot fasteners, attach both sides of the Support Foot to the base of the gate.



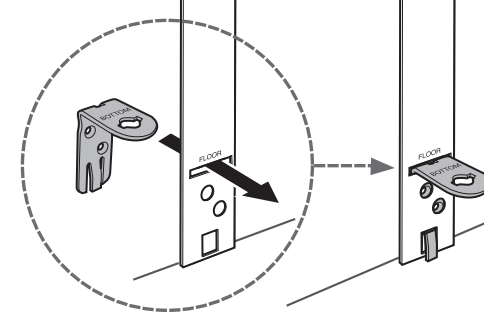
2nd
Use short screw to fasten bottom of Support Foot.

3rd
Screw on base of Support Foot.

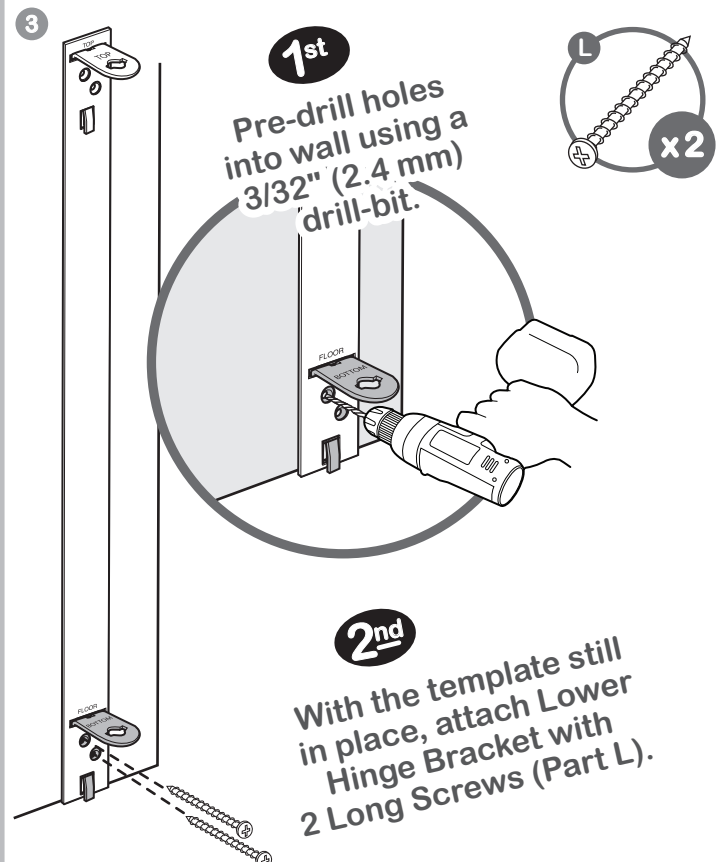


!
IMPORTANT:
If baseboard exists, use Long Hinge Bracket, Long Hinge Bracket Cover and Large Top Latch Catch. If there is no baseboard, use Short Hinge Bracket, Short Hinge Bracket Cover and Small Top Latch Catch.

Slide top and bottom Hinge Brackets into slots in Precision Fit Template.



!
IMPORTANT:
Assure that template is touching bottom of floor to limit gate spacing on bottom of gate!



1st
Pre-drill holes into wall using a 3/32" (2.4 mm) drill-bit.

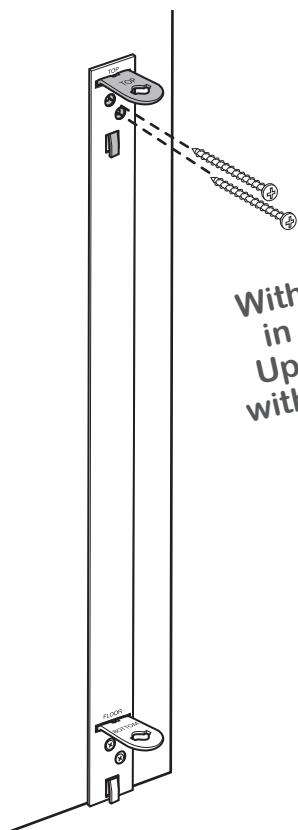
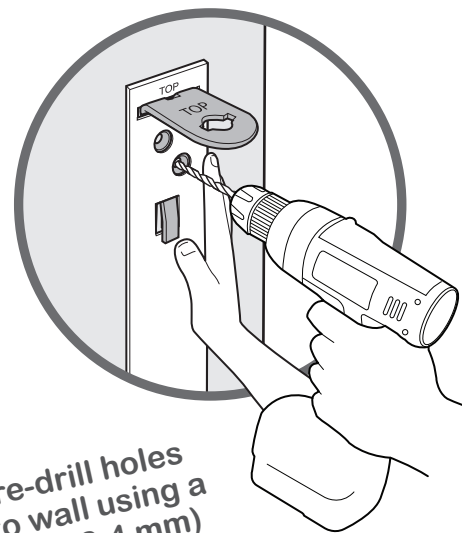
2nd
With the template still in place, attach Lower Hinge Bracket with 2 Long Screws (Part L).

!
IMPORTANT:
If mounting into wallboard, use a 7/32" (5.5 mm) drill bit for the pilot holes and the Wall Anchors provided (part M).

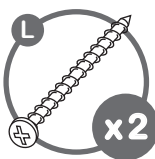


gate installation (continued):

Pre-drill holes into wall using a 3/32" (2.4 mm) drill-bit.

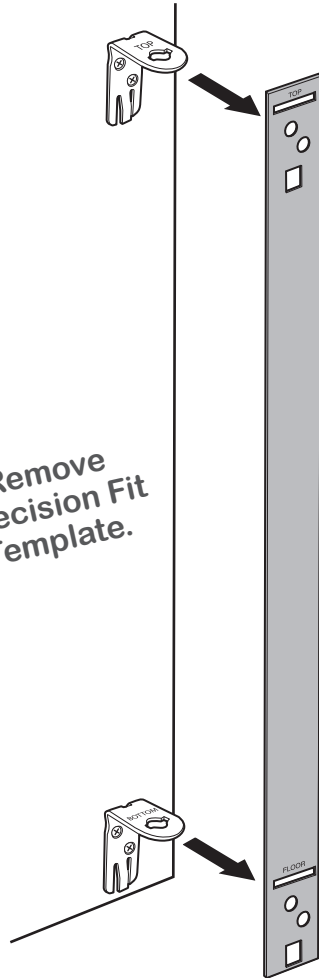


With the template still in place, attach the Upper Hinge Bracket with the 2 Long Screws (part L).



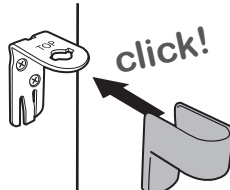
4

Remove Precision Fit Template.



5

click!



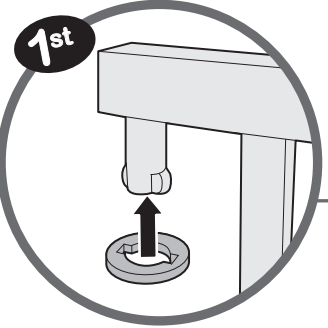
Snap Hinge Bracket Covers onto Hinge Brackets.



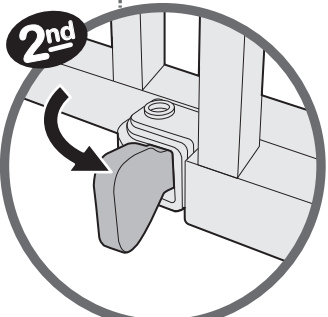
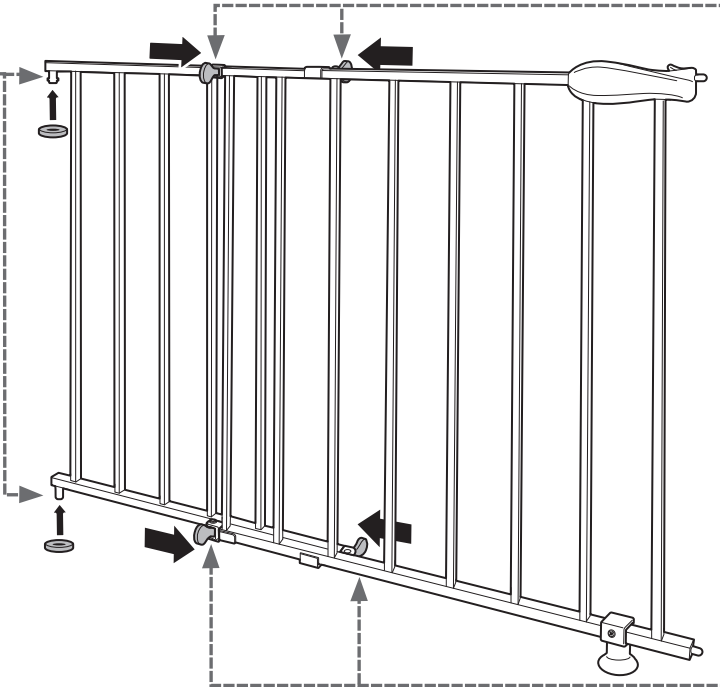
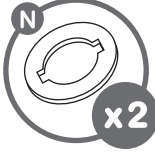
click!

6

gate installation (continued):



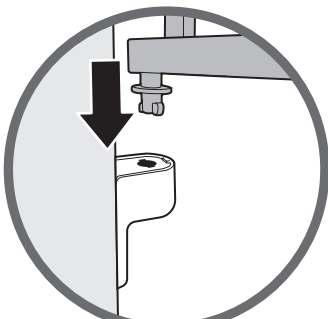
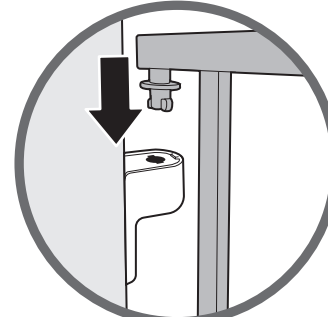
1st Add Plastic Inserts (part N) to the Upper and Lower Hinge Bolts.



2nd Unlock all 4 Cam Lock on Gate.

7

8



With the Gate 90° to the Hinges (open position), lower Gate into openings on hinges.

5