

JBA / JBB

Junction Box for Direct Fixture Mounting

HIGHLIGHTS

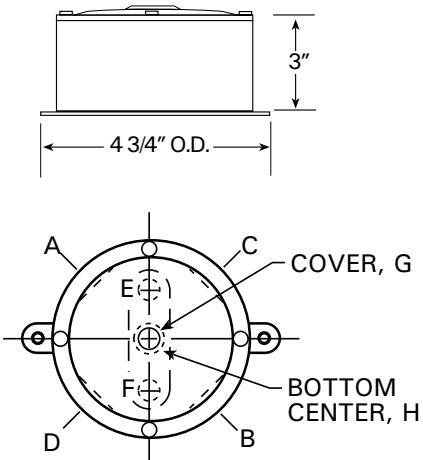
- Available in Aluminum or Bronze
- For ground or wall mounted
- Bottom and side entries available



Specifications

Diameter:	4-3/4"
	121 mm
Height:	3"
	76 mm
Weight:	JBA - 4lbs
	JBB - 6lbs

DIMENSIONS



ORDERING INFORMATION

EXAMPLE: JBA 34E 34F 12G WNS BL

Model	Conduit Entries - Side ³	Conduit Entries - Bottom ^{1,2,3,4}	Fixture Mounting ¹	Accessories	Finish
JBA Junction Box, Aluminum	12A 1/2" NPT 34A 3/4" NPT	12E 1/2" NPT 34E³ 3/4" NPT	14G Accepts 1/4" NPT threaded knuckle	WNS Wire Nuts - Silicone	BL Black BZ Bronze
JBB Junction Box, Bronze	16A PG16 20A M20 12B 1/2" NPT 34B 3/4" NPT 16B PG16 20B M20 12C 1/2" NPT 34C 3/4" NPT 16C PG16 20C M20 12D 1/2" NPT 34D 3/4" NPT 16D PG16 20D M20	16E PG16 20E M20 12F 1/2" NPT 34F³ 3/4" NPT 16F PG16 20F M20 12H 1/2" NPT 34H 3/4" NPT 1H⁴ 1" NPT 16H PG16 20H M20	12G Accepts 1/2" NPT threaded knuckle SCG Stainless Cord Seal 78G 7/8" thru hole for 1/2" NPT or 1/2" NPS		DDB Dark Bronze DNA Natural Aluminum GN Green GR Gray SND Sand STG Steel Gray TVG Terra Verde Green WH White CF Custom _Z⁵ Zinc Undercoat (i.e. BLZ)

Notes:

- Maximum of one size per location.
- PG16 and M20 drillings are for international applications.
- If no conduit entries chosen then 34E and 34F will be the default.
- If 1H is chosen then no drilling is available at E and F locations.
- Add Zinc undercoat for harsh environments

MOUNTING

Fixture Mounting	Size	Fixture that uses this mounting ¹ :
12G	1/2" NPT	4600 KM
78G	7/8" thru hole	CEDAR, ASPEN, PALM, PINE, ALDER
LSC	Large Cord Seal	8200 YM
SC or SCG	Cord Seal	4600 YM (yoke), 8100 YM (yoke)
TC	2 3/8" tenon	8100 & 8200 YMTM mounting
38TL	3/8" taper lock	TPS1, TPS2

Notes:

- Not all fixtures on this chart are available with all accessories, consult the fixture mounting column to see which options are available on this mounting.

SPECIFICATIONS AND FEATURES

MATERIAL: Heavy wall cast aluminum or bronze.

DIMENSIONS: Outside: 4 3/4" (121) diameter x 3" (76) deep.
Inside: 3 1/2" (89) diameter x 2" (51) deep.

VOLTAGE: See Ordering Guide.

FIXTURE MOUNTING: One opening at "G" location in lid accepting a thread knuckle.

CONDUIT ENTRIES: Bottom and side entries available; E, F, & H locations are on the bottom of the Junction Box; A, B, C & D locations are on the sides of the Junction Box. If three (3) bottom entries need to be drilled, the configuration changes to the alternate shown in figure B.

VOLUME: 25 cubic inches.

FINISH NOTE: Aluminum body coated with Permapar; Covers are natural aluminum.

LISTING: UL

BUY AMERICAN ACT: This product is assembled in the USA and meets the Buy America(n) government procurement requirements under FAR, DFARS and DOT regulations. Please refer to www.acuitybrands.com/resources/buy-american for additional information.

WARRANTY: 1-year limited warranty. Complete warranty terms located at: www.acuitybrands.com/support/warranty/terms-and-conditions

NOTE: Actual performance may differ as a result of end-user environment and application. Specifications subject to change without notice. Hydrel recommends sealing the conduit to maintain dry, clean electrical components.