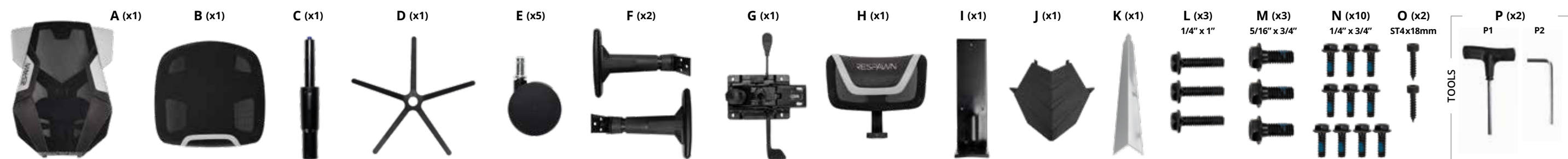


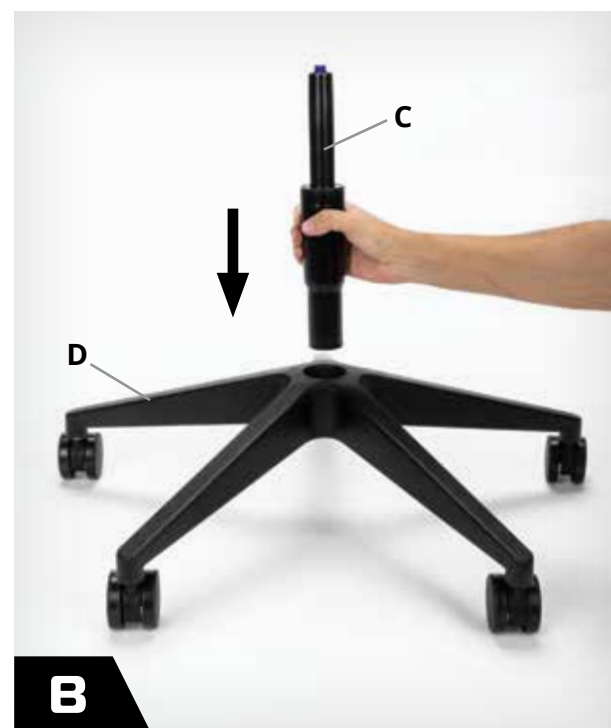
# ASSEMBLY

## STEP BY STEP INSTRUCTION

PACKAGE  
CONTENTS



1. Lay out and identify components on a nearby table or flat surface.
2. Install casters (E) by pushing casters into 5-star base (D) until seated.



3. Turn 5-star base (D) back over.
4. Place gas cylinder assembly (C) into center of 5-star base (D). Place 5-star base assembly on the floor.



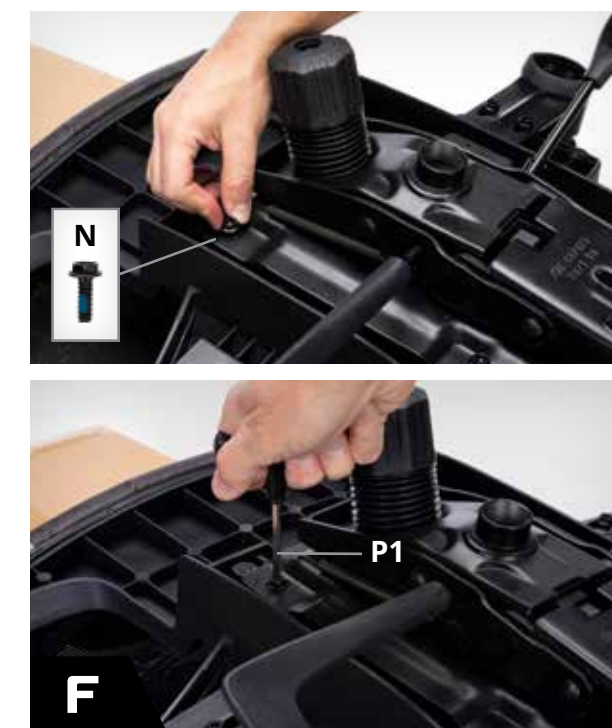
5. Place seat bottom (B), bottom side up, on a flat surface.



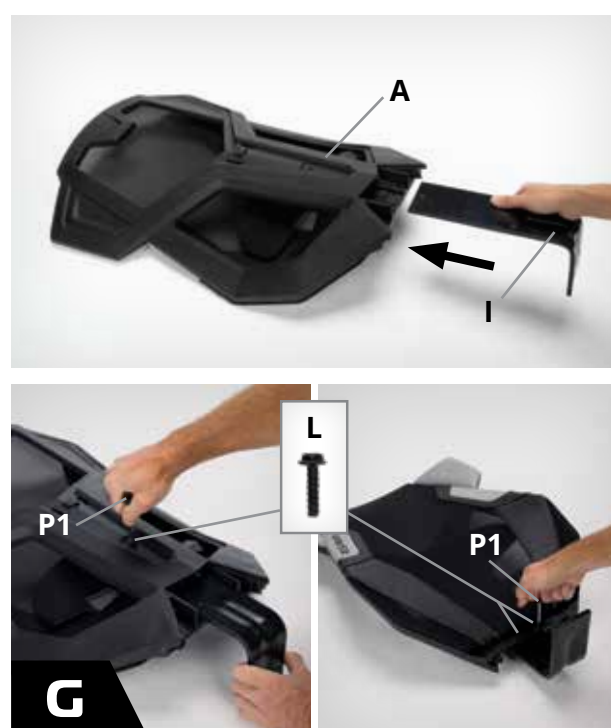
6. Locate arms (F), there is a right and a left arm, and affix arms to the chair base with 3 screws (N) for each arm.
7. Tighten screws thoroughly with the Allen wrench (P1).



8. Locate seat mechanism (G) and center it over the screw holes in the seat bottom. Tilt tensioner will be at the top toward the front of the seat.



9. Locate 4 screws (N) for each corner of the seat mechanism (G). Start at the top and work around, tightening the screws thoroughly in all 4 locations with the Allen wrench (P1).



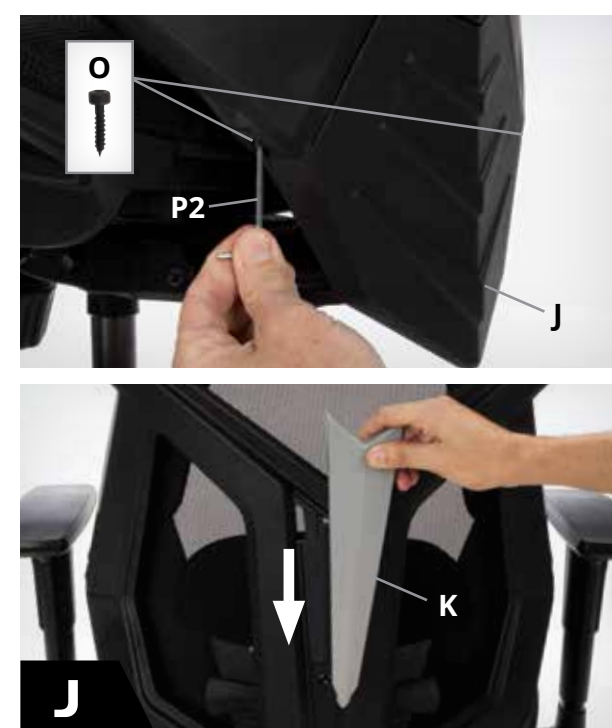
10. Locate seat back (A) and connector (I). Place seat back with the front flat on your work surface.
11. Insert connector (I) into seat back (A) and affix 1 screw (L).
12. Flip seat back (A) and secure 2 screws (L) in the front.



13. Take seat back assembly (A) and join the connector (I) piece to the seat base (B).
14. Locate 3 screws (M) and secure connector (I) to the seat base (B) with the Allen wrench (P1). Start at the top and work around. 2-3 rotations per screw until all screws are in place and then hand tighten all.



15. Take completed seat assembly and place atop the gas cylinder assembly (C) unit from Step B.



16. Locate 2 screws (O) and part (J) which covers the connector (I). Affix part (J) with the Allen wrench (P2).
17. Locate part K and slide into place on the seat back.



18. Headrest screws come in place. Remove screws from the back of the chair.
19. Locate the headrest (H) and 2 screws you removed and affix the headrest to the chair back with the screws.



20. Last step is to sit in your new chair to fully secure the gas cylinder to the seat assembly and make sure chair is fully functional.

**YOU'RE FINISHED, ENJOY!**

**PRO TIP:** It is not required to install the headrest, its use depends on user preference. Chair is fully functional without it.



# USAGE INFO

## CONTROLS & CLEANING

### SAFETY INFORMATION



### GENERAL CARE AND MAINTENANCE

- ✓ Extended exposure to direct sunlight can cause the chair material to crack and color to fade.
- ✓ Keep your pets off of the chair. Their claws and teeth may damage the chair material.
- ✓ Sweat may become an issue as the moisture and oils can damage the chair material. Follow the cleaning guide and wipe the chair clean every so often.
- ✓ Follow care and proper use. Misuse can lead to damage, not just to the chair but to you as well.

### ATTENTION

Make sure all bolts and screws are fully tightened before using chair. Lubricate all moving parts and tighten all bolts/screws every 6 month or whenever needed.

### ⚠WARNING

To ensure proper assembly, follow all steps and use all parts. Failure to follow this warning can result in serious injury to yourself or others.

## CONTROLS

### HEIGHT ADJUSTMENT

Chair adjusts 3" in seated height. Pull lever UP to unlock gas cylinder to raise/lower chair.



### TILT RECLINE

With 25 degrees of recline and 3 locking positions, you can adjust this chair to fit any mood.



### DUAL ADJUSTABLE HEADREST

Dual adjustable headrest pivots up and down and adjusts in height for the best possible fit.



### 2D ARM ADJUSTMENT

2D arms allow for height adjustment as well as elbow pads that adjust front and back.



### ADJUSTABLE LUMBAR SUPPORT

Adjustable lumbar support allows you to move the support UP or DOWN to where you need it.

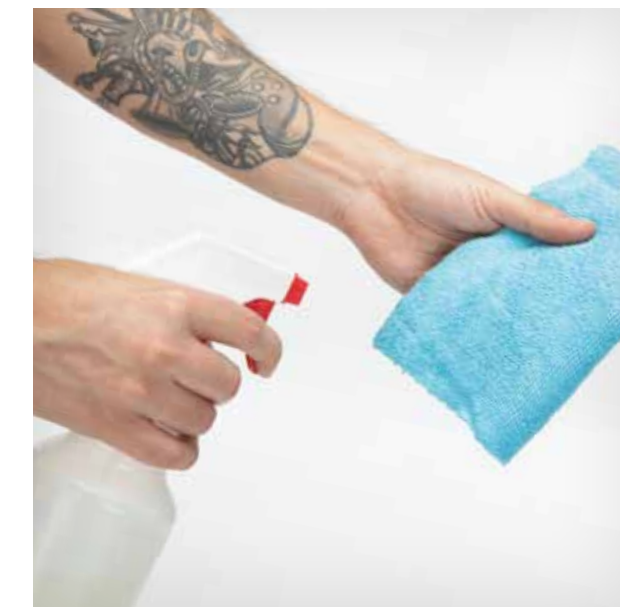


### SEAT SLIDE

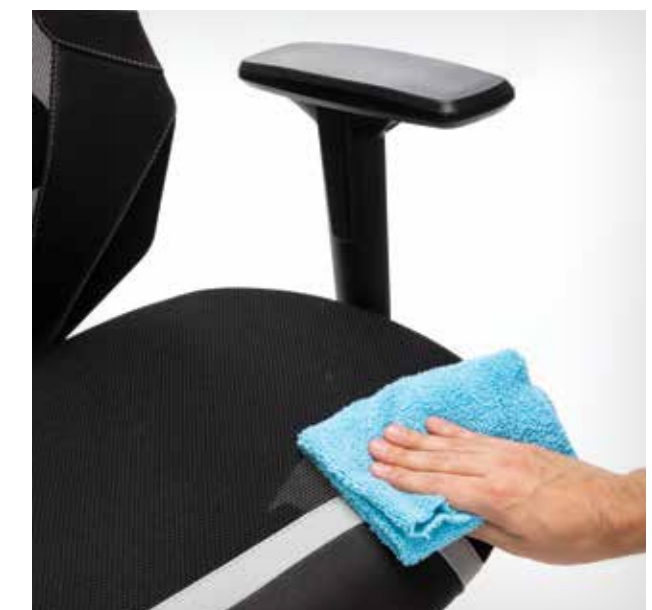
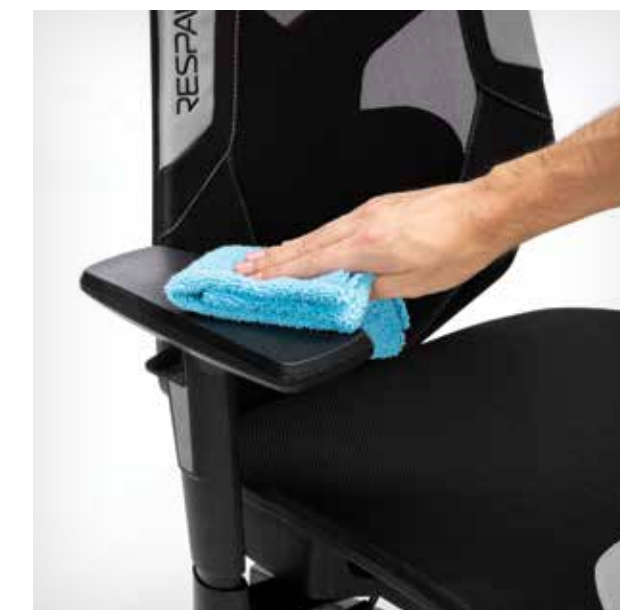
Seat slide adjusts the depth of the seat, allowing more seat room for taller people and less for shorter.



## CLEANING



To clean the chair surfaces use a lint-free microfiber cloth with a mild soap-and-water solution.



Gently wipe all areas to remove any surface dust.

## VISIT OUR WEBSITE TODAY



SCAN ME!  
USING YOUR CAMERA  
RESPAWNPRODUCTS.COM

SCAN NOW FOR INSTANT WEBSITE ACCESS:



ASSEMBLY  
VIDEO



WARRANTY  
INFORMATION



FUTURE DEALS  
& GIVEAWAYS!