

## DEFAULT VALUES & IP SEARCH

*Note: The default values of the IP camera are listed below:*

<b>IP Address</b>	192.168.0.88	<b>Username</b>	admin
<b>Port</b>	80	<b>Password</b>	admin

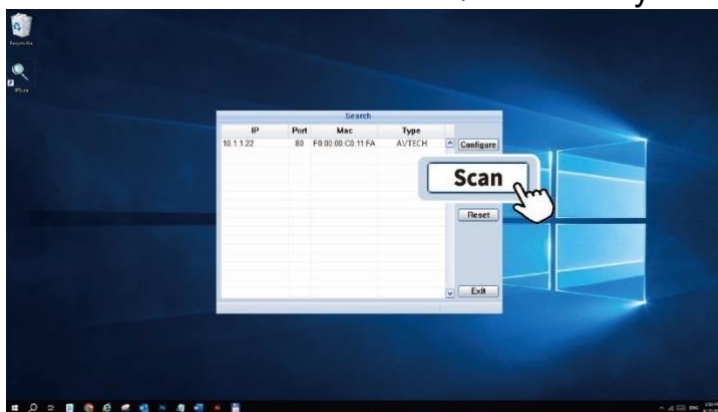
To know how to find the IP address assigned to the IP camera, please refer to the steps below.

*Note: The tool for IP search is compatible only with Windows OS.*

Step1: Download the IP search tool from the link below and install the tool on your PC/laptop: <http://www.surveillance-download.com/user/IPscan.zip>



Step2: Open **IPScan** and choose **Scan** to start searching the IP cameras connected to the same router / switch as your laptop / PC is connected to.



*Note: To log into the camera directly, enter its IP address and port number in a web browser (URL format: `http://ipaddress:port`) to show the login page, and fill in its user name and password.*

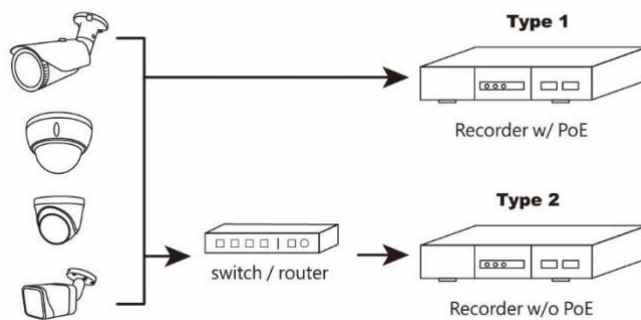
The default username and password are both *admin*.

## SYSTEM CONNECTION & SETUP

**Note:** The system connection and setup is using our own brand's recorder as an example. To know how to connect our cameras to other brand's recorder, please refer to the manual of the recorder.

Step1: Connect cameras to our recorder and log into the recorder.

**Note:** The default username and password are both **admin**.

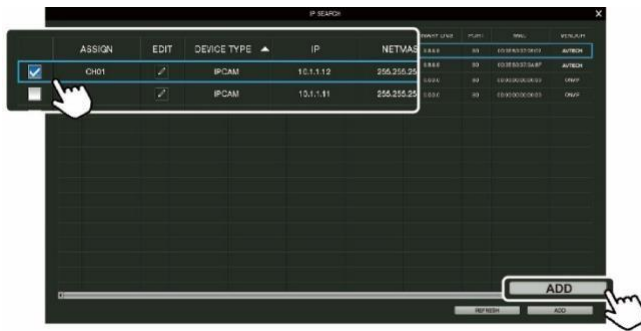


Step2: Go to **MENU** ➤ **CAMERA** ➤ **CONNECTION** and select **IP SEARCH** at the bottom right corner. A list of every connected IP camera will be shown with its connection status to your recorder and MAC address.



Step3: An IP address will be assigned for each connected IP camera automatically. Check  to assign a channel for the listed camera automatically and choose **ADD** to confirm.

**Note:** If no IP address is assigned, please reset your camera and refresh the list.



Step4: Return to the live view and wait for the live feed to show.

## HOW TO USE WATERPROOF KIT

