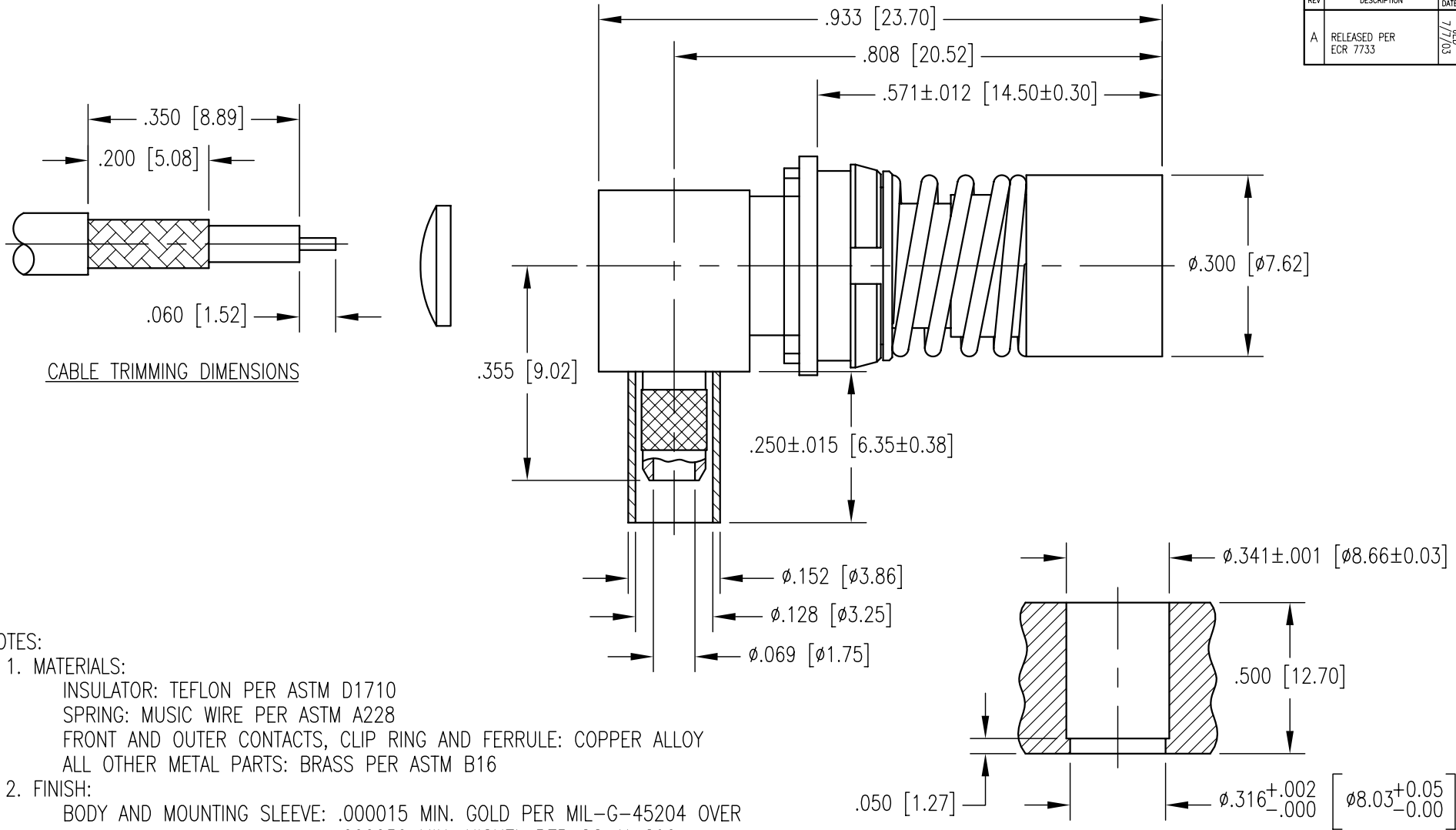


REV	DESCRIPTION	BY	DATE	APPD
A	RELEASED PER ECR 7733	JED	7/7/02	JEM



- NOTES:
- MATERIALS:
 - INSULATOR: TEFLON PER ASTM D1710
 - SPRING: MUSIC WIRE PER ASTM A228
 - FRONT AND OUTER CONTACTS, CLIP RING AND FERRULE: COPPER ALLOY
 - ALL OTHER METAL PARTS: BRASS PER ASTM B16
 - FINISH:
 - BODY AND MOUNTING SLEEVE: .000015 MIN. GOLD PER MIL-G-45204 OVER .000050 MIN. NICKEL PER QQ-N-290
 - CONTACTS AND SHROUD: .000030 MIN. GOLD PER MIL-G-45204 OVER .000050 MIN. NICKEL PER QQ-N-290
 - CAP, FERRULE AND C-RING: .000005 MIN. GOLD PER MIL-G-45204 OVER .000050 MIN. NICKEL PER QQ-N-290
 - CLIP RING: .000100 MIN. NICKEL PER QQ-N-290 OVER COPPER FLASH
 - SPRING: UNPLATED
 - DESIGNED FOR USE WITH RG-316 CABLE OR EQUIVALENT.
 - FOR CABLING PROCEDURES USE CAP 9-12 WITH TRIMMING DIMENSIONS SHOWN.
 - CRIMP FERRULE USING .128 HEX DIE.

PER ASME Y14.5M-1994 UNLESS OTHERWISE SPECIFIED: DIMENSIONS ARE IN INCHES [MM] TOLERANCES: DECIMALS .XX ± .01 [0.254] .XXX ± .005 [0.127] ANGLES ± 2° SCALE: 4:1		NORTHROP GRUMMAN Winchester Electronics 62 Barnes Industrial Road North Wallingford, CT 06492	
CUSTOMER DRAWING		TITLE BMA RIGHT ANGLE RECEPTACLE (SNAP-FIT)	
DRAWN JED DATE 8/27/02	CHECKED JWH DATE 9/18/02	APPROVED JEM DATE 9/18/02	APPROVED KJT DATE 9/18/02
A		SD363-922-0630H	SHT. 1 OF 1 REV. A