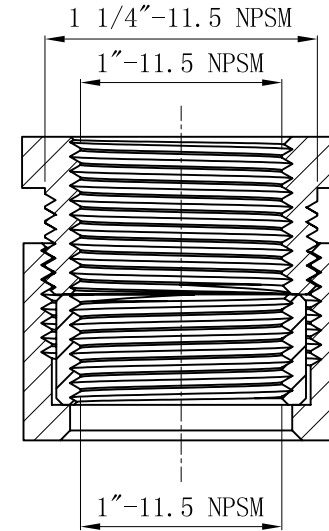
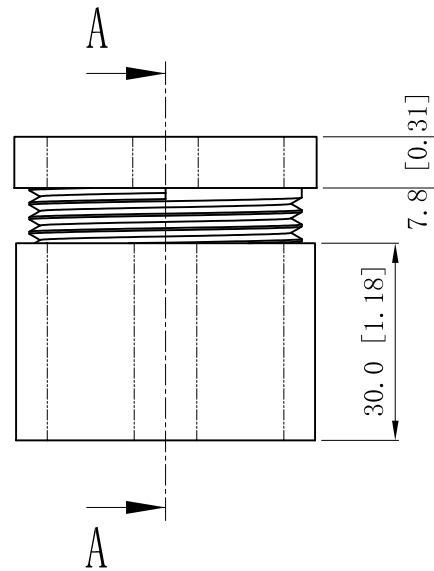
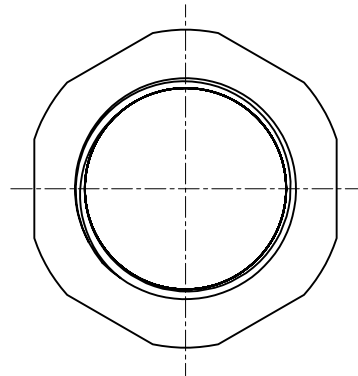
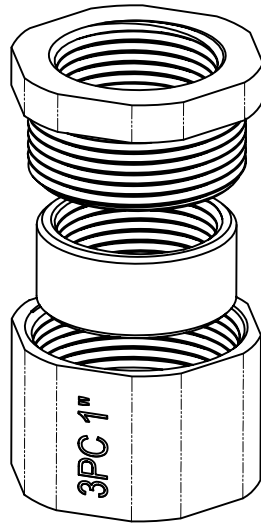


SIDES

BOTTOM

Material:malleable casting,Finish:Zinc plated



CUTAWAY VIEW A-A

This data sheet is for reference only .GARVIN INDUSTRIES reserves the right to make changes to the design without prior notice.

DESCRIPTION
TRADE REFERENCE TERMS

STANDARD PACKING	<h1 style="text-align: center;">GARVIN INDUSTRIES</h1> <h2 style="text-align: center;">THREE-PIECE COUPLING</h2>		
10 PCS			
SIZE	DWG NO.	REV	
A4	3PC100		
DATA SHEET			