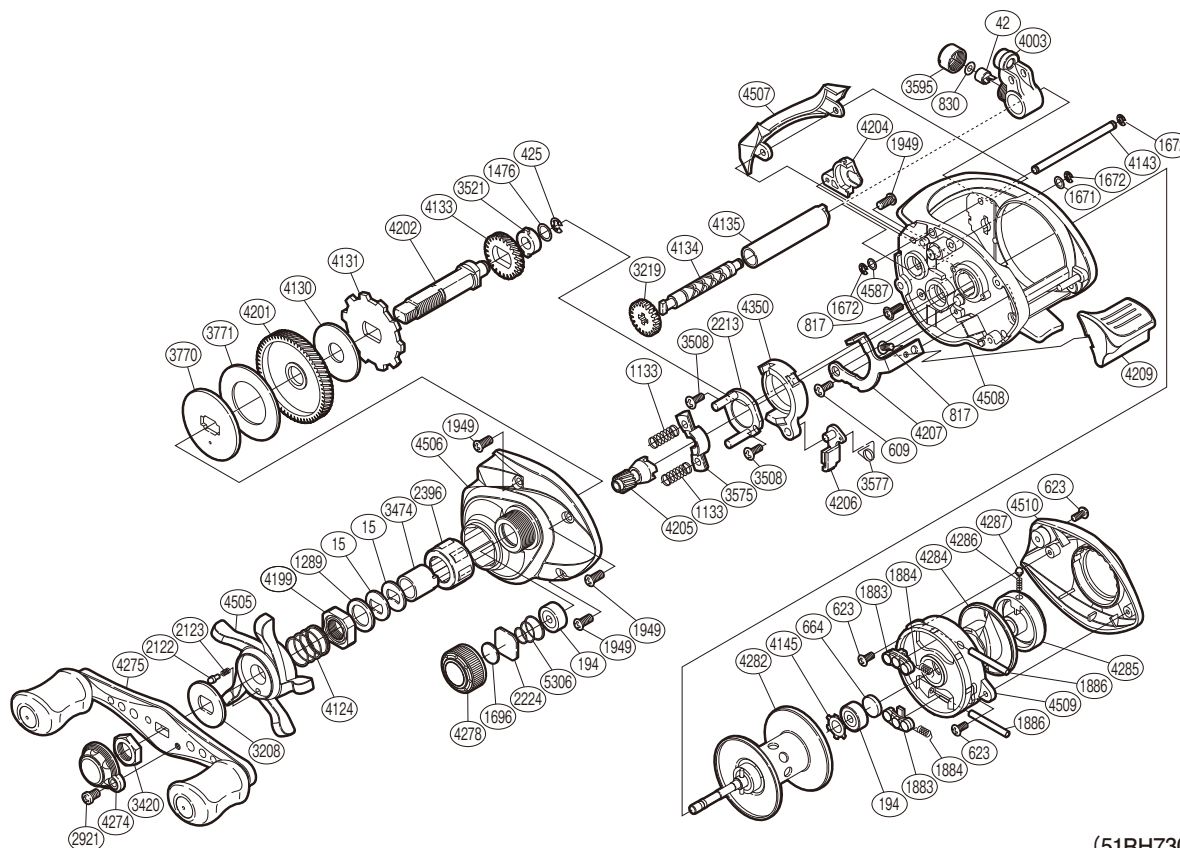


SHIMANO

CAIUS

CAIUS-201



(51RH730201U)

#	Part No.	Description	#	Part No.	Description	#	Part No.	Description
15	10D60	Drag Spring Washer	2921	10LZ1	Screw	4204	10AS8	Drive Shaft Cover
42	10FFZ	Line Guide Pawl	3208	10J22	Star Drag Click Plate	4205	10CTT	Pinion Gear
194	105BX	Ball Bearing	3219	10FP4	Idle Gear	4206	10MQP	Clutch Pawl
425	105NE	E Lock	3420	10FNS	Handle Nut	4207	10QLJ	Clutch Plate
609	10MT3	Screw	3474	10MAY	Roller Clutch Inner Tube	4209	10CGB	Quick-Fire II Clutch Bar
623	103C0	Screw	3508	103ND	Screw	4274	10Q64	Handle Retainer
664	1057S	Spacer B	3521	10MAM	Drive Shaft Bushing	4275	10CFD	Handle Assembly
817	10MPW	Screw	3575	10P99	Yoke	4278	10KDY	Cast Control Cap
830	10TZF	Spacer	3577	10N1V	Clutch Pawl Spring	4282	10L7P	Spool Assembly
1133	104BL	Yoke Spring	3595	10FJV	Pawl Cap	4284	10A7F	Brake Cam
1289	10J1L	Star Drag Spacer	3770	109EY	Key Washer	4285	10BNY	Magnetic Control Dial
1476	10D69	Washer	3771	10LN9	Drag Washer	4286	10GUT	Click Spring
1671	10BHX	Washer	4003	10NYW	Line Guide	4287	10BF8	Click Pin
1672	105NC	E Lock	4124	10A70	Star Drag Spring	4350	10K15	Clutch Cam
1696	10896	Cast Control Spacer	4130	10CHX	Drag Washer	4505	10AUA	Star Drag
1883	10LKH	Magnet Retainer	4131	10D74	Anti-Reverse Ratchet	4506	10PX2	Left Side Plate
1884	10F0C	Magnet Retainer Spring	4133	10J6Y	Idle Gear	4507	10QH0	Level Wind Protector
1886	10HRQ	Magnet Retainer Shaft	4134	104ZK	Worm Shaft	4508	10EYC	One-Piece Frame
1949	10LSR	Screw	4135	10Nfy	Level Wind Guard	4509	10ATU	Dial Case
2122	10BT0	Click Pin	4143	10QsJ	Stabilizer Bar	4510	10D2A	Right Side Plate
2123	10BT2	Click Spring	4145	105SD	Cr Lock	4587	10KF5	Washer
2213	10F67	Clutch Cam Retainer	4199	10A09	Star Drag Nut	5306	10TMT	Spool Tension Spring
2224	1085F	Spool Tension Spacer	4201	10CP2	Drive Gear			
2396	10F5C	Roller Clutch Bearing	4202	105CN	Drive Shaft			

Please note that the number of adjusting washers may not be the same as shown in the exploded views.
(Adjustment will vary with each individual product.)

(241029)_002