

AXOR Montreux
HighArc Kitchen Faucet 2-Spray Pull-Down, 1.75 GPM
 Finishes : **polished nickel** Part no. : **16581831**



Description

Features

- Swivel range 110° / 150°
- Laminar and needle spray
- Toggle spray diverter
- MagFit magnetic sprayhead docking
- Single-hole installation
- Flow: 1.75 GPM (6.6 L/Min)
- Ceramic cartridge
- 3/8" connections
- Integrated double backflow prevention

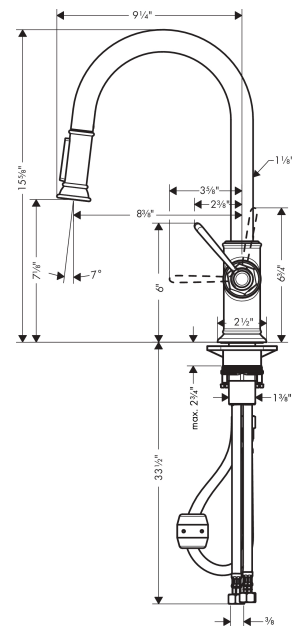
Technology



Product image



Scale drawing

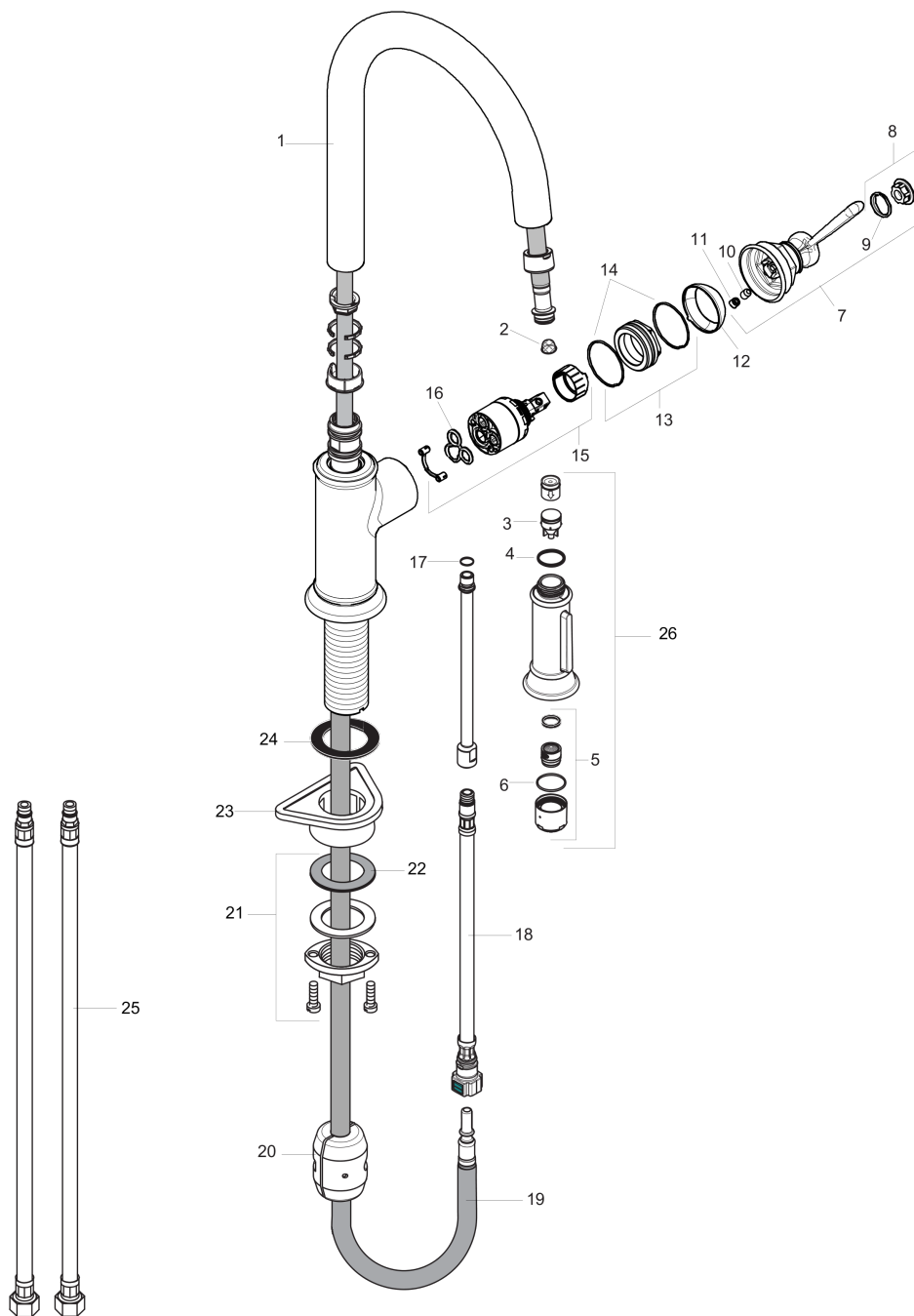


AXOR Montreux
HighArc Kitchen Faucet 2-Spray Pull-Down, 1.75 GPM
 Finishes : polished nickel Part no. : 16581831



Exploded drawing

Year of production: >01/18



AXOR Montreux
HighArc Kitchen Faucet 2-Spray Pull-Down, 1.75 GPM
 Finishes : **polished nickel** Part no. : **16581831**



Spare parts list

Year of production: >01/18

| Pos. | Description | Part no. | PC | PU |
|------|-----------------------------------|----------|----|----|
| 1 | spout cpl. | 92972830 | 0 | 1 |
| 2 | filter | 97735000 | 0 | 1 |
| 3 | set of non return valves DW 15 | 97350000 | 0 | 1 |
| 4 | O-ring 18x1,5 | 98231000 | 0 | 1 |
| 5 | aerator laminar M22x1 (15 l/min) | 95909000 | 0 | 1 |
| 6 | O-ring 20x1 | 98140000 | 0 | 1 |
| 7 | handle | 92963830 | 0 | 1 |
| 8 | cover cap | 92964000 | 0 | 1 |
| 9 | O-ring 16x2 | 98133000 | 0 | 1 |
| 10 | hollow set screw M6x8 | 98444000 | 0 | 1 |
| 11 | screw cover | 96762000 | 0 | 1 |
| 12 | flange | 92965830 | 0 | 1 |
| 13 | nut | 92966000 | 0 | 1 |
| 14 | O-ring 33x1,5 | 98164000 | 0 | 1 |
| 15 | cartridge, assy | 92730000 | 0 | 1 |
| 16 | seal | 95008000 | 0 | 1 |
| 17 | O-ring 8x1,75 | 97827000 | 0 | 1 |
| 18 | connection hose 600 mm M10x1 | 95561000 | 0 | 1 |
| 19 | hose 1,50 m | 88624000 | 0 | 1 |
| 20 | weight | 92500000 | 0 | 1 |
| 21 | fixing set (Ø 34) | 95049000 | 0 | 1 |
| 22 | lever collar | 97548000 | 0 | 1 |
| 23 | support | 97523000 | 0 | 1 |
| 24 | seal | 92582000 | 0 | 1 |
| 25 | connection hose 35½" M8x0,75 3/8" | 96316001 | 0 | 1 |
| 26 | handspray | 92967831 | 0 | 1 |
| a | non return valve | 93218000 | 0 | 1 |