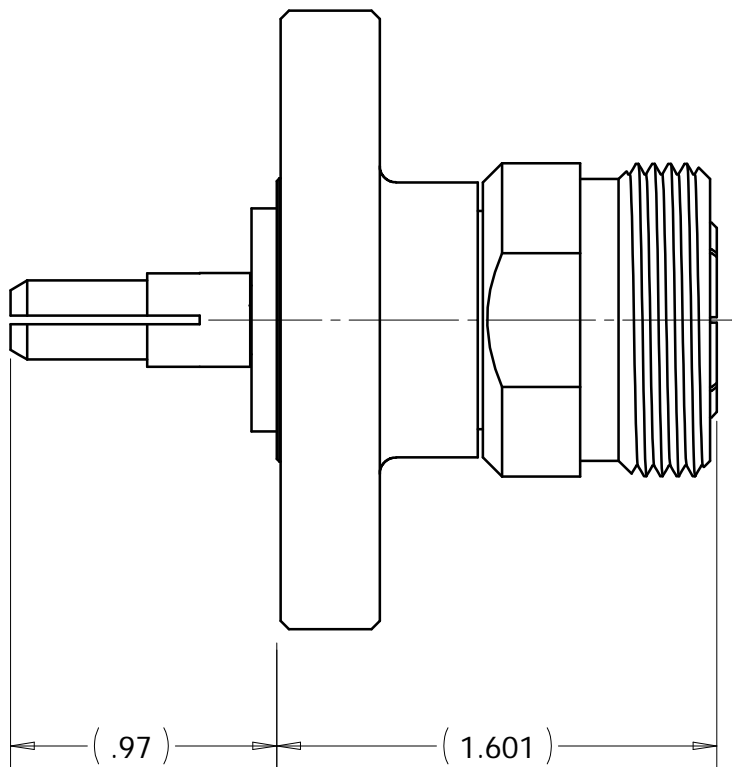
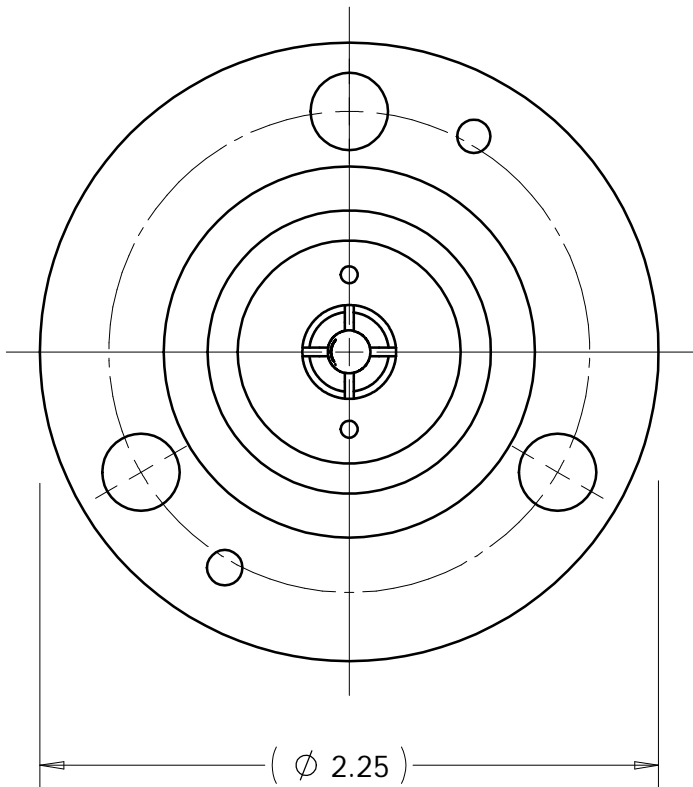
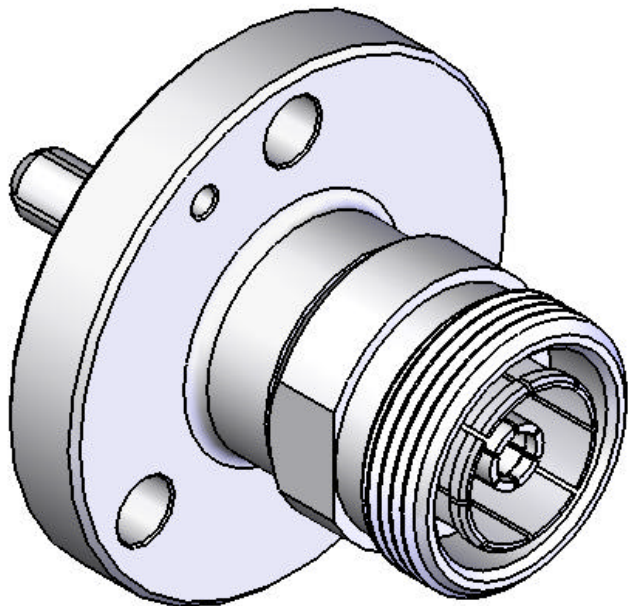


This document, including the design, configuration and mechanical features revealed herein are the sole, confidential and proprietary property of TRU Corporation. Reproduction or use thereof, in whole or part, is prohibited without the prior written consent of TRU Corporation.

REV.	DESCRIPTION	DATE	APPROVED
-	ORIGINAL ISSUE	6/3/94	RMK
A	ECO-2173	3/25/03	RMK
B	ECO-3031 and redrawn	2/2/06	DA



ENGINEERING DATA:

ELECTRICAL:

IMPEDANCE: 50 OHMS NOMINAL  
FREQUENCY RANGE: UP TO 6 GHz  
WORKING VOLTAGE: 2,700 VOLTS MAX.

MECHANICAL:

INTERFACE: 7-16(female) PER IEC-169-4  
EIA-875(fixed male) PER 7/8EIA STANDARD  
WEIGHT: 0.61 LBS.

MATERIAL:

INSULATORS: PTFE (Teflon)  
CENTER CONDUCTORS: BERYLLIUM COPPER & BRASS  
SPRING OUTER CONDUCTOR: PHOSPHOR BRONZE  
BODY : BRASS

FINISH:

ALL METAL PARTS: SILVER PLATED

NOTES:

1. UNLESS OTHERWISE SPECIFIED,  
ALL DIMENSIONS ARE REFERENCE ONLY.

MATERIAL	DO NOT SCALE DRAWING
COMMENTS:	UNLESS OTHERWISE SPECIFIED: DIMENSIONS ARE IN INCHES  TOLERANCES: FRACTIONS: $\pm 1/64$ .XX : $\pm .01$ .XXX: $\pm .005$ ANGLES: $\pm 1/2^\circ$ MACHINED SURFACES:  63/
surface area: sq inch	weight: 0.594 lbs

DRAWN WWW	DATE 6/3/94
ENG APPR. KOCH	DATE 6/3/94
MFG APPR.	DATE
OTHER APPR. RMK	DATE 6/3/94
THIRD ANGLE PROJECTION 	

 TRU CORPORATION 245 LYNNFIELD STREET, PEABODY, MA 01960 The Custom Interconnect Leader™		
TITLE: CONNECTOR, COAXIAL, RF 7-16(f) to 7/8-50 EIA(m) ADAPTER		
SIZE B	DWG. NO. TRU-7617	REV B
CAGE CODE: 92180	SCALE: 1.5:1	SHEET 1 OF 1