

Desk



IMPORTANT

Carefully remove all the parts from the carton and place them individually on a soft cloth to prevent scratches or other damage.

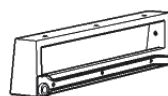
Carefully and strictly follow these assembly instructions to ensure a completed product as designed.

Do not use power tools above 8 volts to assemble.

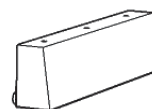
Part List



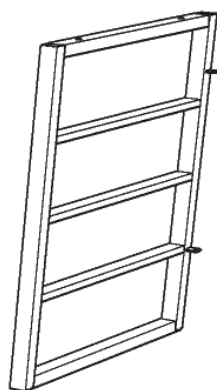
A.
Top
1 pc.



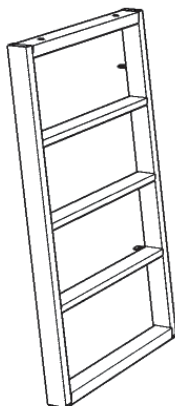
B.
Side Box
1 pc.



C.
Side Box
1 pc.



E.
Side Frame
1 pc.



F.
Side Frame
1 pc.



D.
Back Panel
1 pc.



G.
Rail
1 pc.



H.
Drawer 1 pc. Refer to later page(s) of these instructions for drawer assembly.

Hardware List



Hex Wrench
1 pc.



M6x28
Tapered Bolt
10 pcs. (+1 extra)



M6x38
Tapered Bolt (long)
4 pcs. (+1 extra)



M3x15
Wood Screw
2 pcs. (+1 extra)



M3x25
Flat Head Screw
22 pcs. (+1 extra)



M4x32
Machine Screw
4 pcs.



Small Hex Wrench
1 pc.



M6x13
Head Cap Bolt
2 pcs. (+1 extra)



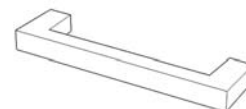
Spring Washer
2 pcs. (+1 extra)



Flat Washer
2 pcs. (+1 extra)



Dowel
2 pcs. (+1 extra)



Handle
2 pcs.

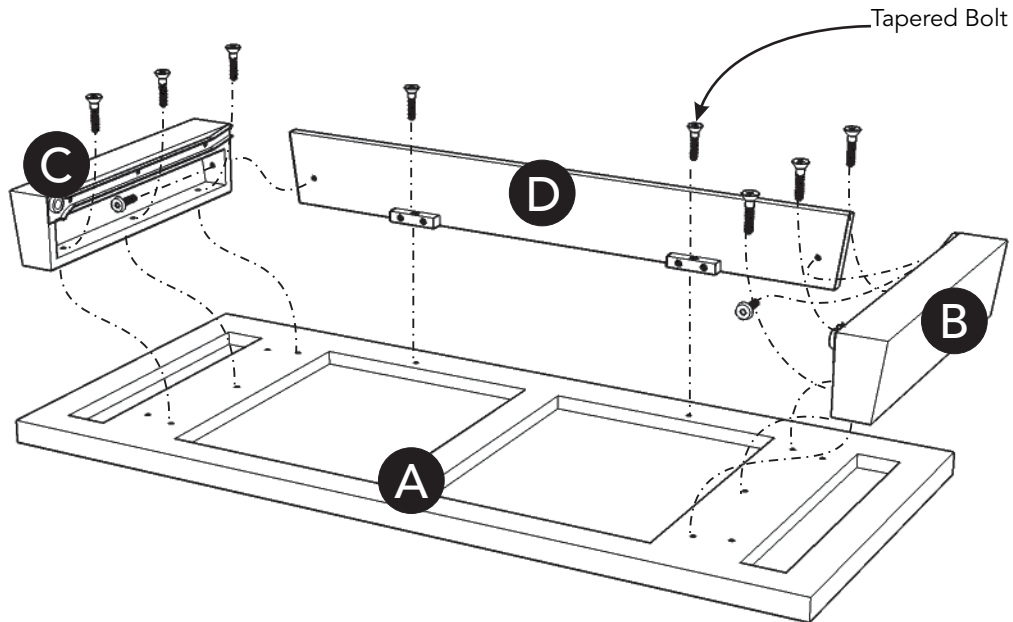
Tool(s) required for assembly: Phillips screwdriver, Level

Home Styles Customer Service: www.homestyles-furniture.com,
servicedesk@homestyles-furniture.com, 888-680-7460, 877-831-0319

Assembly Instructions 2/5

IMPORTANT

- Use a soft cloth between these parts and the floor.
- Do not use power tools above 8 volts to assemble.
- The unit must be level to work properly. Use the included adjustable levelers to level.
- Keep Hex Wrench as the bolts may need to be tightened in the future.



STEP 1

Place Top (A) upside down on a soft cloth.

Attach Back Panel (D) to Top (A) with Tapered Bolts, tightening bolts only halfway.
(See Figure 1)

Attach Side Boxes (B) and (C) to unit with Tapered Bolts, tightening bolts only halfway.
(See Figure 2)

Tighten all bolts.

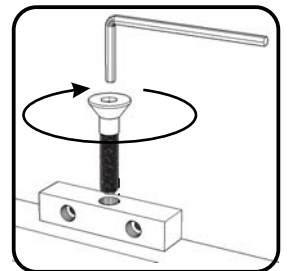


Figure 1

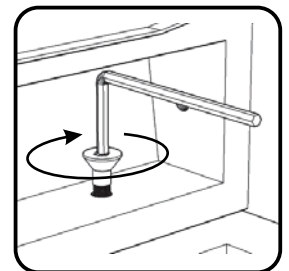
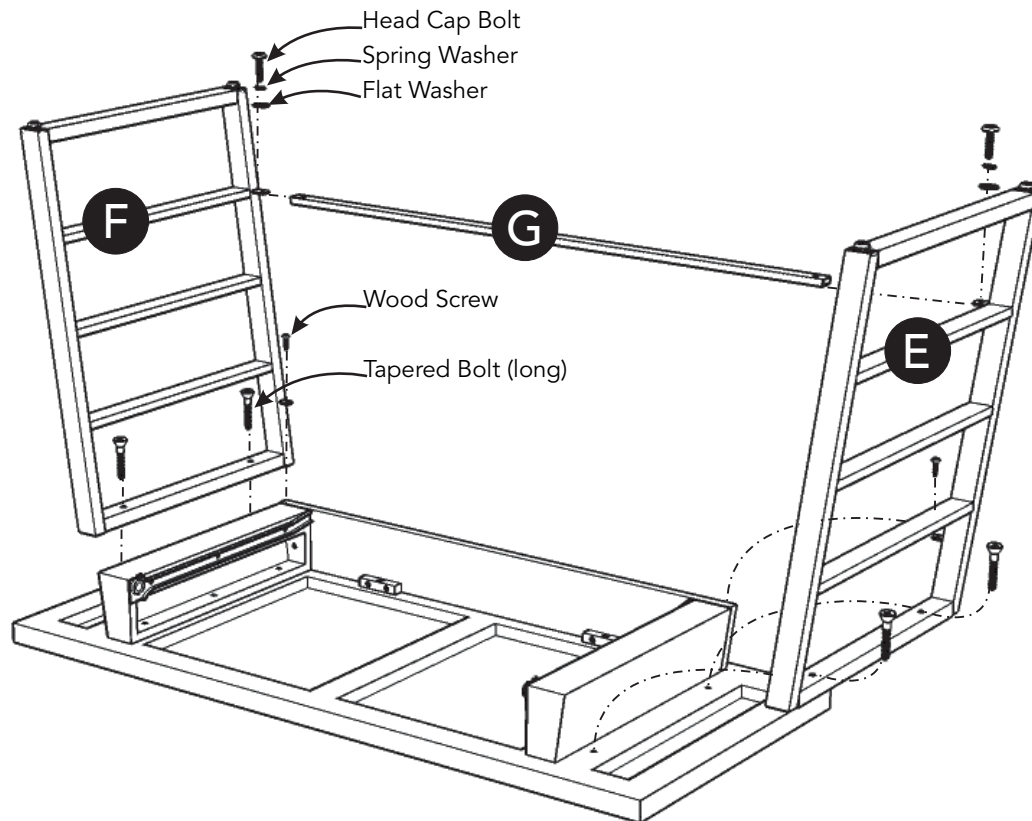


Figure 2



STEP 2

Attach Side Frame (E) to unit with Tapered Bolts (long), tightening bolts only halfway.

Attach Rail (G) to unit with Head Cap Bolt, Spring Washer and Flat Washer, tightening bolt only halfway.

Attach Side Frame (F) to unit with Head Cap Bolt, Spring Washer, Flat Washer and Tapered Bolts (long), tightening bolts only halfway.

Tighten all bolts.

Insert Wood Screws to unit, then tighten.
(See Figure 3)

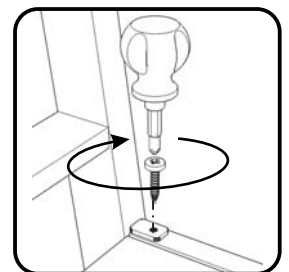
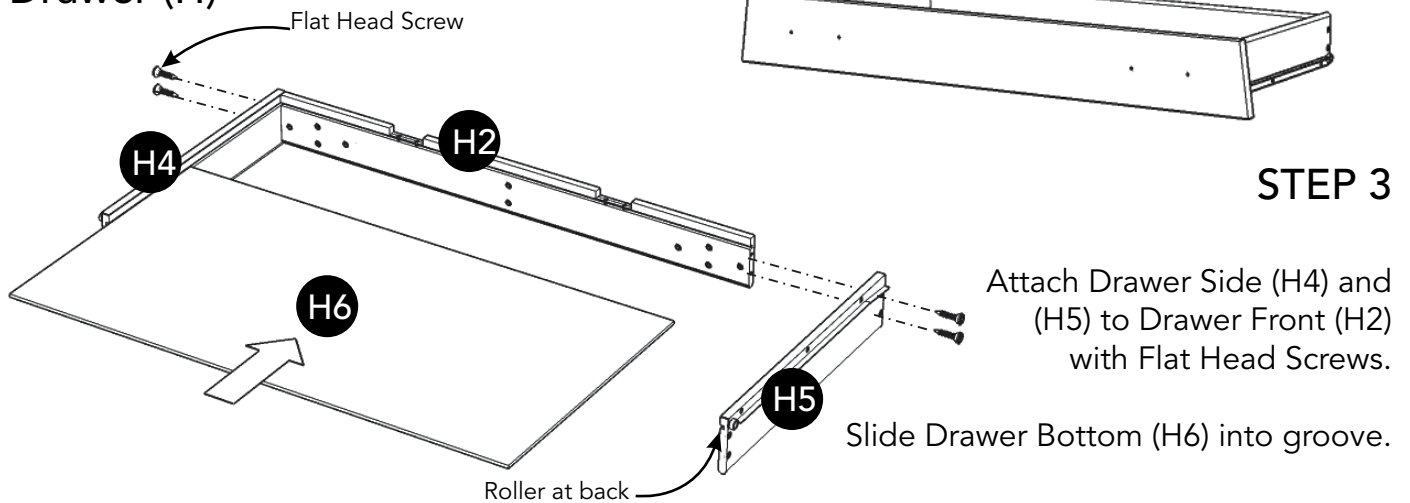


Figure 3

Assembly Instructions 4/5

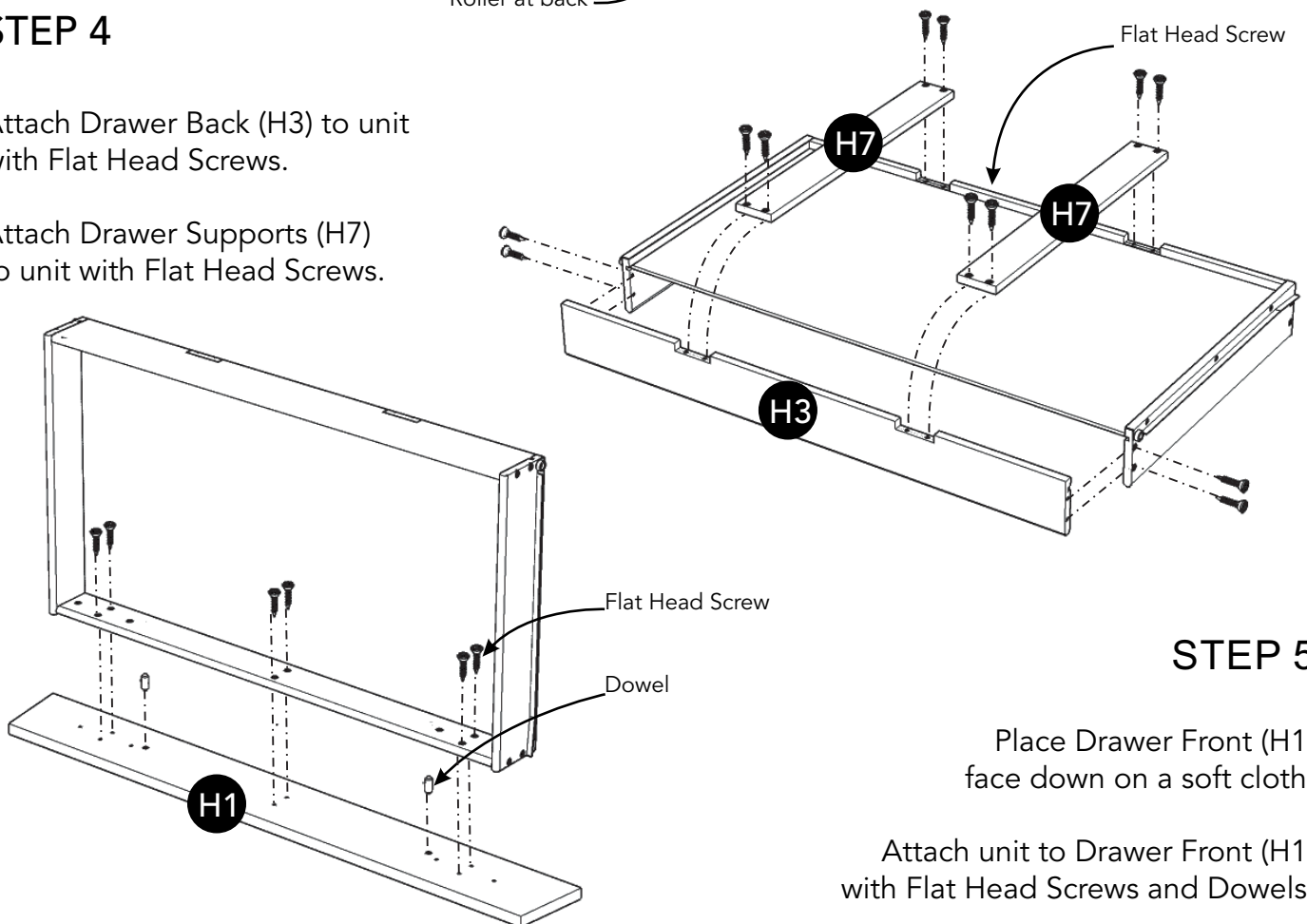
Drawer (H)



STEP 4

Attach Drawer Back (H3) to unit with Flat Head Screws.

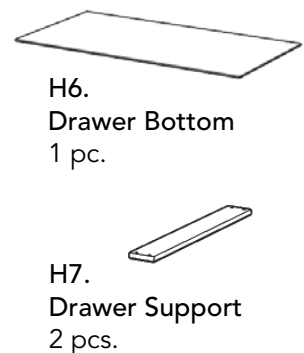
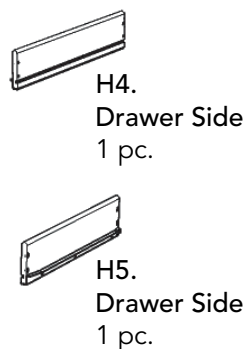
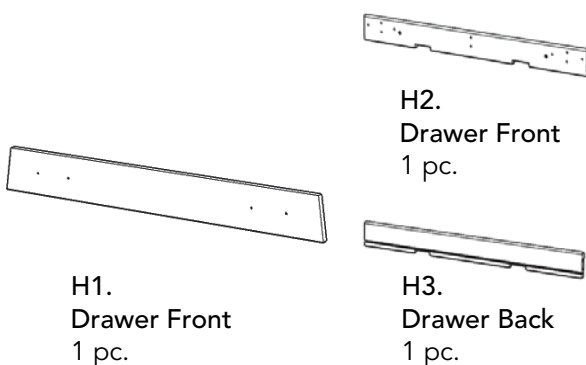
Attach Drawer Supports (H7) to unit with Flat Head Screws.

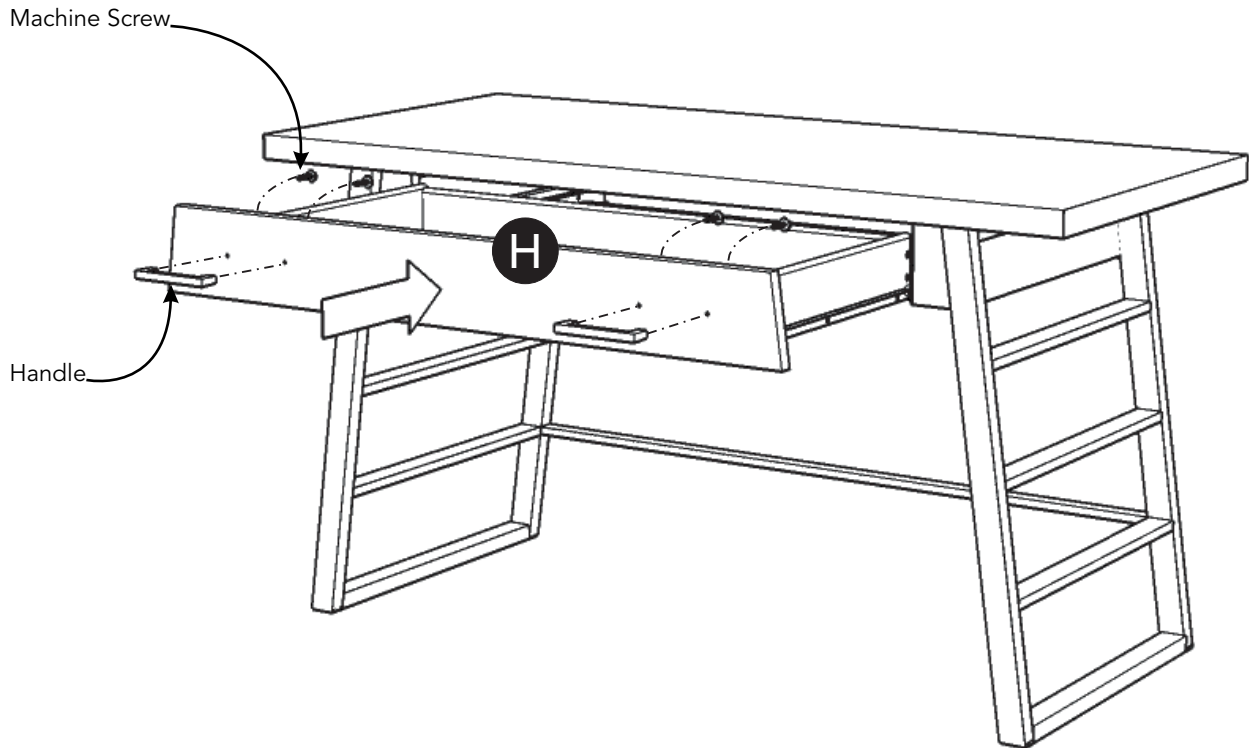


STEP 5

Place Drawer Front (H1) face down on a soft cloth.

Attach unit to Drawer Front (H1) with Flat Head Screws and Dowels.





STEP 6

Turn unit from Step 2 over to its' upright position.

Attach Handles to Drawer (H) with Machine Screws.

Slide Drawer (H) into position.

Level unit by adjusting the adjustable levelers on bottom of unit.
(See Figure 4)

Note: Unit must be level to work property.

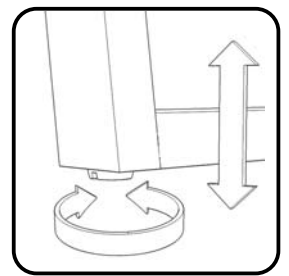


Figure 4

CARE INSTRUCTIONS

NEVER

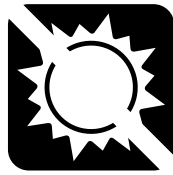
allow liquids to remain on furniture.
Absorption causes parts to warp
and split and finishes to delaminate.

NEVER

use glass cleaners on
finished furniture. Ammonia
chemically attacks the finish.



Do not use power tools
above 8 volts to assemble.
**PREVENT
CRACKING**



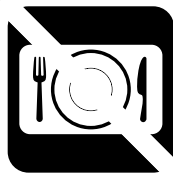
Do not place
in direct sunlight.
**PREVENT
FADING**



Do not write
directly on surface.
**PREVENT
MARKING**



Do not place hot
objects on surface.
**PREVENT
FINISH DAMAGE**



Do not use rubber
based placemats.
**PREVENT
DISCOLORING**



Do not use commercial
waxes and polishes.
**PREVENT
YELLOWING**

CLEAN

with a soft cloth moistened
in lukewarm soap and water.
Buff with a dry clean cloth.



Home Styles will provide replacements free of charge for missing or damaged hardware or parts within 30 days of purchase. Digital images of the defective parts may be required. If the product was not purchased from an authorized retail affiliate, Home Styles is under no obligation to provide replacement parts. Parts are not available for fully assembled items nor are parts available for sale. Replacements for missing or damaged hardware or parts may be requested at:

www.homestyles-furniture.com/customer-service/replacement-parts

Home Styles Customer Service: www.homestyles-furniture.com,
servicedesk@homestyles-furniture.com, 888-680-7460, 877-831-0319