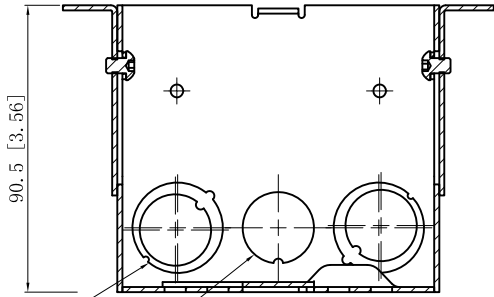


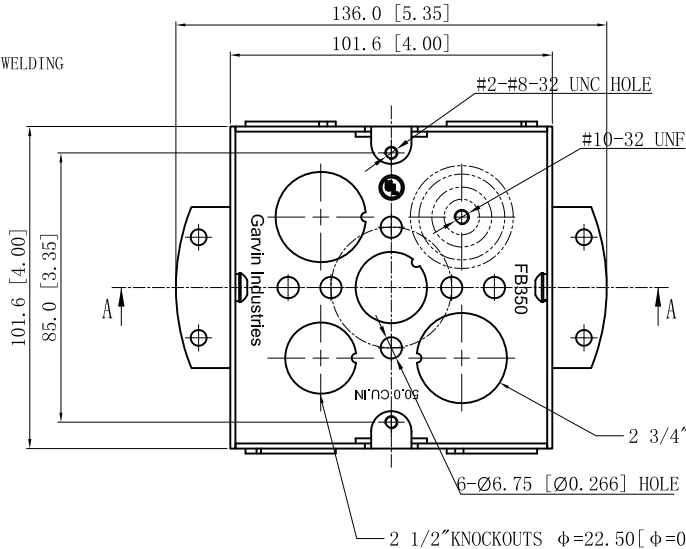
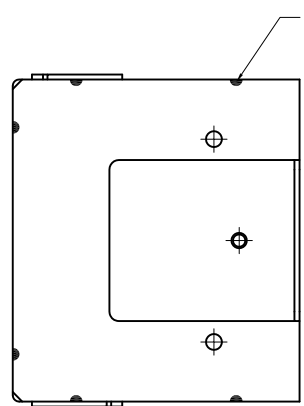
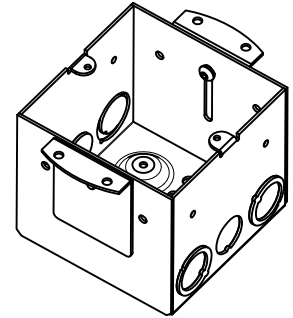
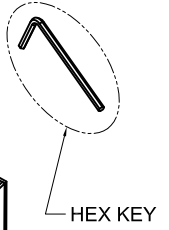
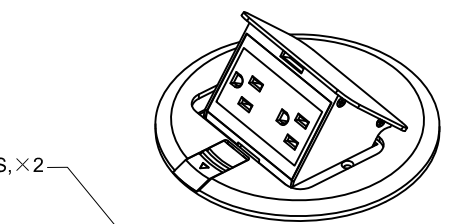
SIDES	BOTTOM
2 PCS 10-32×1/4 Screws Installed	
2 pcs No.10 spring lock washers Installed	
1 pcs #10-32 Allen wrench hex key	
Material:Steel-0.0625"-G60 Galvanized	



4 1/2"-3/4"KNOCKOUTS $\phi=22.50$ [$\phi=0.886$]
 $\phi=28.50$ [$\phi=1.122$]
 2 1/2"KNOCKOUTS $\phi=22.50$ [$\phi=0.886$]

CUTAWAY VIEW A-A

NO.10 LOCK WASHERS, ×2
 #10-32 UNF, ×2
 [SEE NOTE 5]
 "PINCH" END OF SCREW
 AFTER INSTALL SO IT CANNOT
 BE EASILY REMOVED



This data sheet is for reference only .GARVIN INDUSTRIES reserves the right to make changes to the design without prior notice.

DESCRIPTION
TRADE REFERENCE TERMS

STANDARD PACKING	GARVIN INDUSTRIES		
	TITLE 4" SQUARE BOXES		
	SIZE A4	DWG NO. FBCVSS-TRWR-KIT	REV
	DATA SHEET		