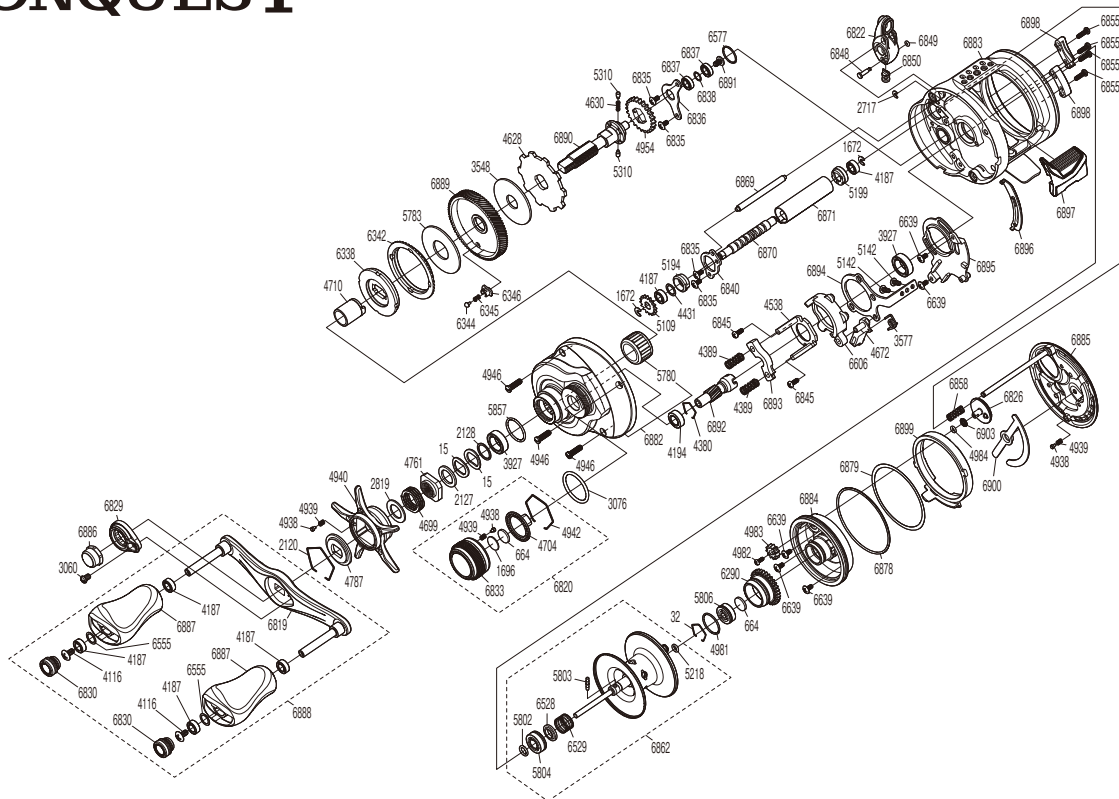


SHIMANO

CALCUTTA CONQUEST

21CQ201



(51RL360201X)

#	Part No.	Description	#	Part No.	Description	#	Part No.	Description
0015	10D60	Drag Spring Washer	4982	10PRT	Screw	6837	10SAM	Ball Bearing
0032	10GEW	Bearing Retainer	4983	10BGM	Br Dial Gear	6838	10THF	Washer
0664	10S7S	Washer	4984	10FMT	O Ring	6840	10T7S	Worm Bushing Retainer
1672	105NC	E Lock	5109	10FNX	Idle Gear	6845	101CN	Screw
1696	10896	Cast Control Spacer	5142	10559	Screw	6848	100GC	Oscillating Slider Retainer
2120	10KXV	Click Plate Retainer	5194	10N9Q	Worm Bushing A	6849	10908	O Ring
2127	10J1N	Star Drag Spacer	5199	104SP	Worm Bushing B	6850	100GJ	Line Guide Pawl
2128	105PW	Bearing Washer	5218	10EZ7	O Ring	6855	10LVP	Screw
2717	105NB	E Lock	5310	10HJG	Idle Gear Pin	6858	10T7F	Damper Spring
2819	10HHN	Washer	5780	1005E	Roller Clutch Bearing	6862	101L9	Spool Assembly(With Bearing)
3060	10CZ5	Screw	5783	1027W	Drag Washer	6869	101QD	Level Wind Guide
3076	108W8	O Ring	5802	10TNF	O Ring	6870	101QC	Worm Shaft
3548	10CHZ	Drag Washer	5803	10MD0	Spool Clutch Pin	6871	101G5	Level Wind Guard
3577	10N1V	Clutch Pawl Spring	5804	1005D	Ball Bearing	6878	1014X	O Ring
3927	10EX8	Ball Bearing	5806	10S37	Ball Bearing	6879	104H8	Washer
4116	103E9	Screw	5857	1027V	O Ring	6882	101L8	Left Side Plate Assembly
4187	104VX	Ball Bearing	6290	100N4	Brake Pipe Gear Assembly	6883	101LA	Frame Assembly
4194	105BP	Ball Bearing	6338	10E9L	Key Washer	6884	101VP	Dial Case Assembly
4380	1057X	Retainer	6342	10E9B	Drag Click Ratchet	6885	101L7	Right Side Plate Assembly
4389	104BU	Yoke Spring	6344	10C0T	Drag Click	6886	10T7X	Handle Nut
4431	10G8G	Washer	6345	10J8A	Click Spring	6887	101EW	Handle Knob
4538	10F42	Clutch Cam Retainer	6346	10J87	Drag Click Pin Holder	6888	101VK	Handle Assembly
4628	10D6Y	Anti-Reverse Ratchet	6528	10SWZ	Bushing	6889	101G6	Drive Gear
4630	10JDX	Idle Gear Spring	6529	10SJF	Bearing Pressure Spring	6890	101EV	Drive Shaft
4672	105ZV	Clutch Pawl	6555	104FH	Washer	6891	10DR5	Screw
4699	10A71	Star Drag Spring	6577	10SZ4	O Ring	6892	101EY	Pinion Gear
4704	10L2F	Cast Control Click Plate	6606	10SKS	Clutch Cam	6893	101G7	Yoke
4710	10BN1	Roller Clutch Inner Tube	6639	100BD	Screw	6894	101ES	Clutch Plate
4761	10A0C	Star Drag Nut	6819	100TK	Handle Shank Assembly	6895	101QF	Clutch Guard
4787	10J1Y	Star Drag Click Plate	6820	10TEE	Cast Control Cap Assembly	6896	101ER	Clutch Bar Guide
4938	10B27	Click Pin	6822	10TED	Line Guide Pawl Holder Assembly	6897	10282	Clutch Button Assembly
4939	10988	Click Spring	6826	100TQ	Br Dial Assembly	6898	101QE	Brake Case Cam
4940	10AU1	Star Drag	6829	10T7R	Handle Retainer	6899	101Q5	Right Side Plate Cam Lever
4942	10L6X	Cast Control Click Holder	6830	10T7N	Handle Knob Seal	6900	101ET	Right Side Plate Seal
4946	10C3N	Screw	6833	10T7H	Cast Control Cap	6903	10SEJ	Washer
4954	10J6W	Idle Gear	6835	10LVF	Screw			
4981	10LA8	O Ring	6836	100GK	Drive Shaft Retainer	4692	10LQ0	B-100 Oil (Accessory)

Please note that the number of adjusting washers may not be the same as shown in the exploded views. (Adjustment will vary with each individual product.)

(230904)_004