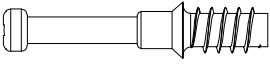



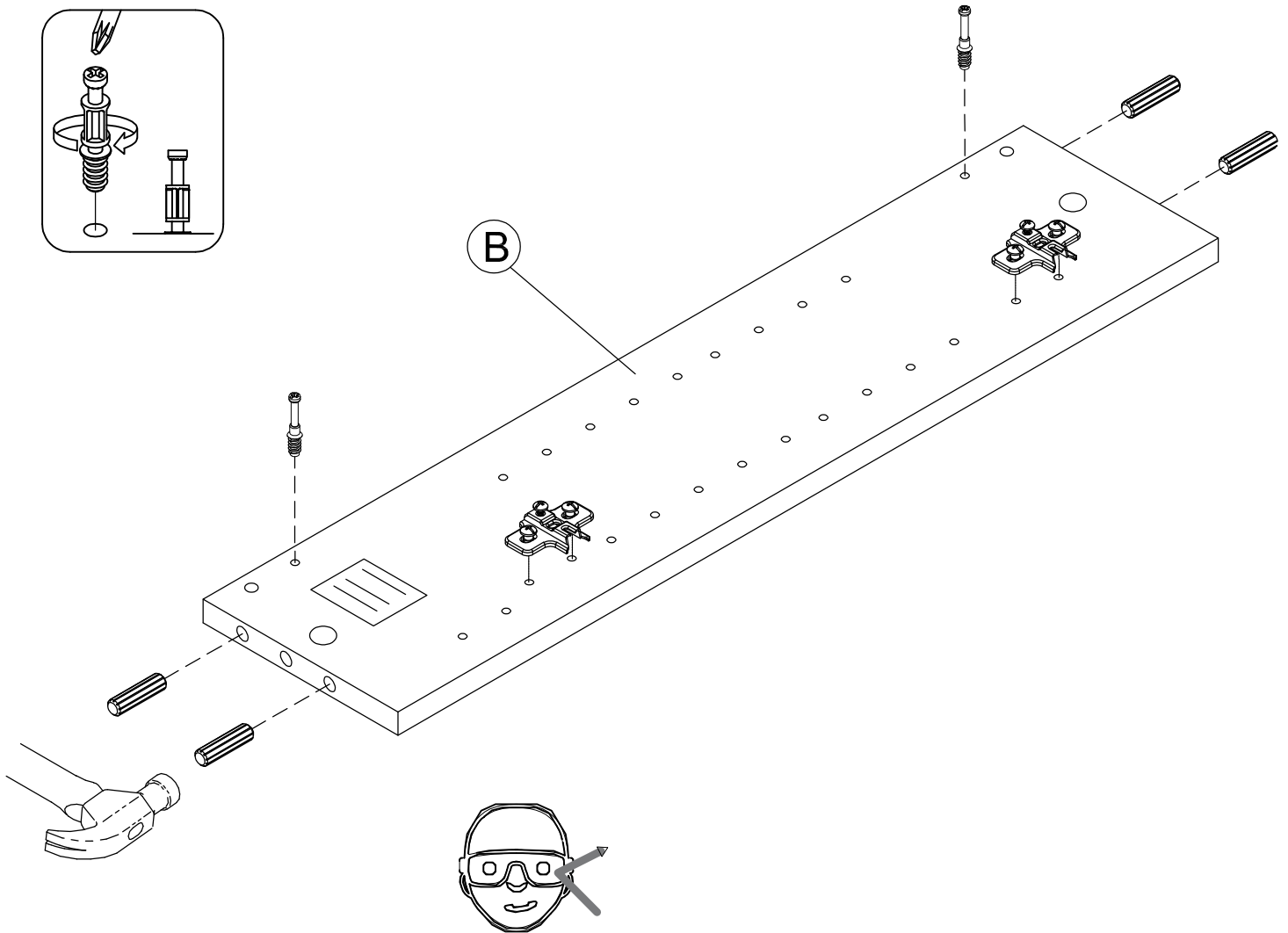
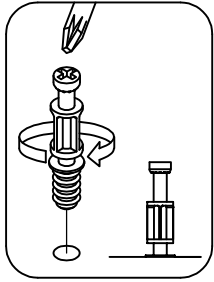
# SUPPLEMENTAL ASSEMBLY INSTRUCTIONS

REPLACEMENT FOR ASSEMBLY-STEP 9, PLEASE REFER TO ASSEMBLY DETAILS AS FOLLOWING

H180604  [ 2 ]  
KD Bolt

H38169  [ 4 ]  
Wood Dowel  
8 x 30mm

H170612  [ 2 ]  
Mounting Plate



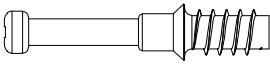
Safety glasses  
Gafas de seguridad  
Lunettes de protection

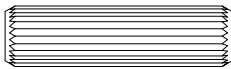


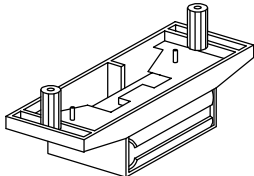
**NEED HELP?**  
Call 1-800-950-4782  
[www.bushfurniture.com](http://www.bushfurniture.com)

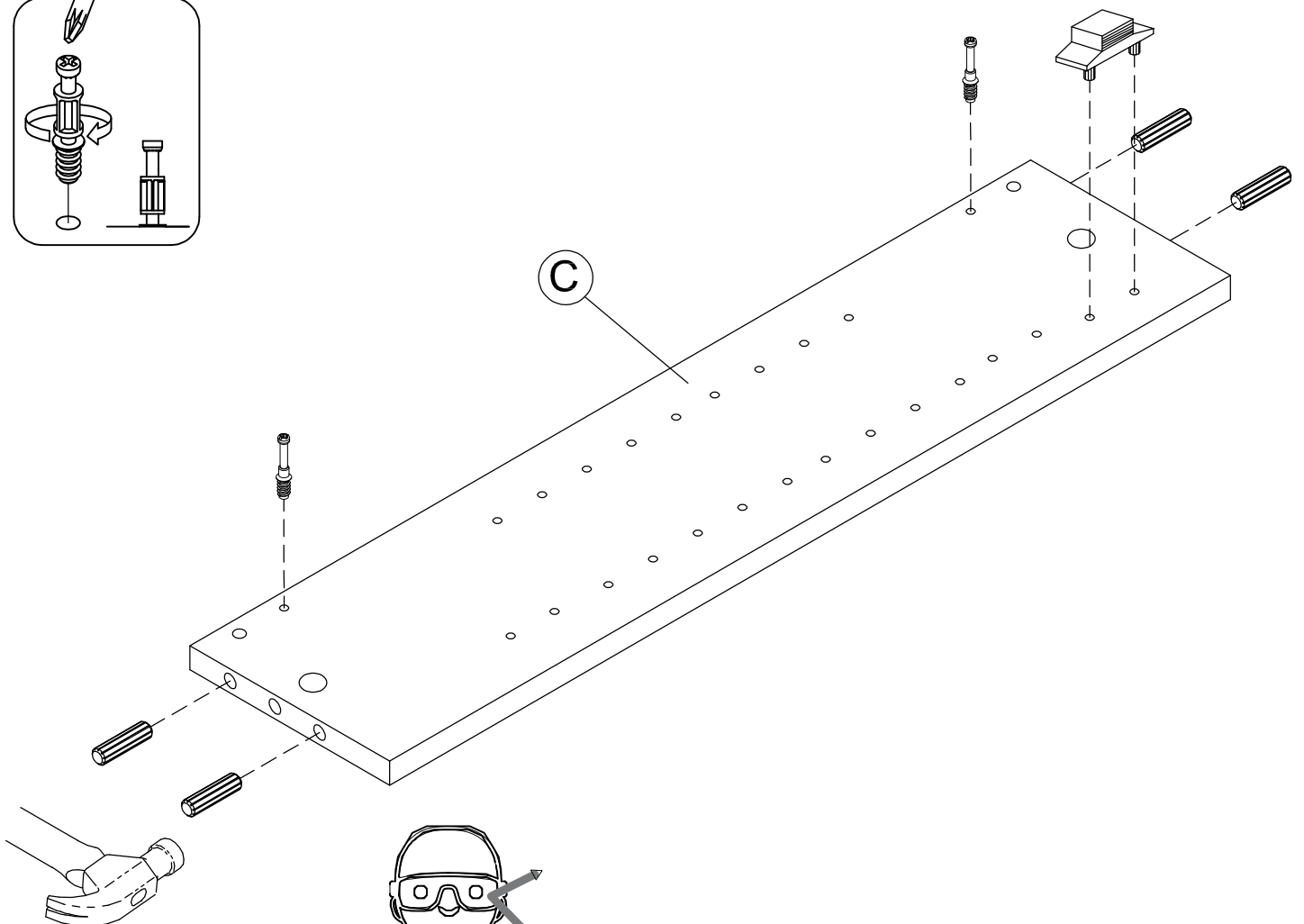
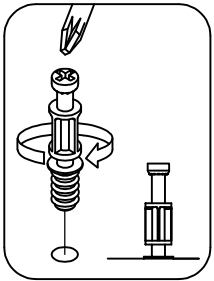
# SUPPLEMENTAL ASSEMBLY INSTRUCTIONS

REPLACEMENT FOR ASSEMBLY-STEP 10, PLEASE REFER TO ASSEMBLY DETAILS AS FOLLOWING

H180604  [ 2 ]  
KD Bolt

H38169  [ 4 ]  
Wood Dowel  
8 x 30mm

H200012  [ 1 ]  
Magnetic Top



Safety glasses  
Gafas de seguridad  
Lunettes de protection



**NEED HELP?**  
Call 1-800-950-4782  
[www.bushfurniture.com](http://www.bushfurniture.com)

**Go to step 13**  
**Proceda al paso 13**  
**Allez a l'etape 13**