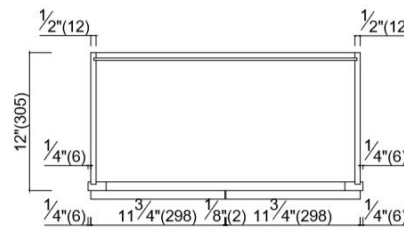
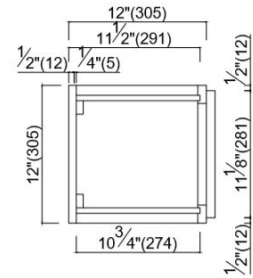
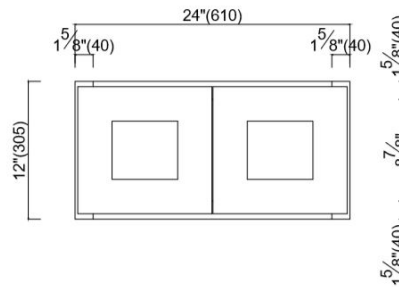


Brookings Fully Assembled Shaker Bridge Wall Kitchen Cabinet 24x12x12 White



SPECIFICATIONS

| | |
|-------------------------------|---------------------------|
| MATERIAL CONSTRUCTION: | Wood |
| WOOD SPECIES: | Maple |
| ASSEMBLED DIMENSIONS: | 12" H x 24" L x 12" D |
| ASSEMBLED WEIGHT: | 31.08 lbs. |
| KITCHEN CABINET TYPE: | Bridge Wall |
| MOUNTING TYPE: | Wall Mount |
| CONSTRUCTION TYPE: | Face Frame |
| HINGE STYLE: | Soft Close |
| DOOR STYLE: | 2 Solid wood frame shaker |
| NUMBER OF DRAWERS: | 0 |
| DRAWER DIMENSIONS 1: | N/A |
| DRAWER DIMENSIONS 2: | N/A |
| DRAWER DIMENSIONS 3: | N/A |
| DWR BOX MATERIAL: | N/A |
| DWR CONSTRUCTION: | N/A |
| DWR GLIDE: | |
| FAKE DWR QTY: | 0 |
| FAKE DWR LOCATION: | N/A |

| | |
|--|-----------------|
| NUMBER OF SHELVES: | 0 |
| SHELF STYLE: | N/A |
| ADJUSTIBLE SHELVES: | N/A |
| SHELF ADJUSTIBILITY INCREMENTS: | N/A |
| SHELF DIMENSIONS: | N/A" W x N/A" D |
| SHELF THICKNESS: | N/A |
| SHELF MATERIAL: | N/A |
| FACE FRAME MATERIAL: | HDF |
| SIDES MATERIAL: | Plywood |
| BOTTOM MATERIAL: | Plywood |
| BACK PANEL MATERIAL: | Plywood |
| BACK BRACE MATERIAL: | Wood |
| TOE KICK INSET WIDTH: | N/A |

| | |
|--------------------------------------|-------------------------|
| WARRANTY: | 1-Year limited warranty |
| LEGAL FOR SALE IN CALIFORNIA: | Yes |
| CARB COMPLIANT: | CARB Phase 2 |
| TSCA TITLE VI COMPLIANT: | Yes |



TYPE:
JOB:
ORDER CODE:
APPROVALS: