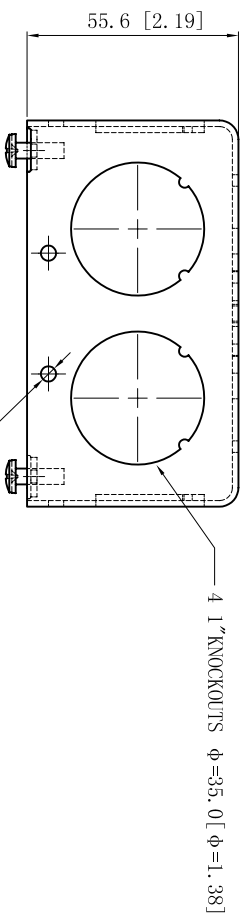
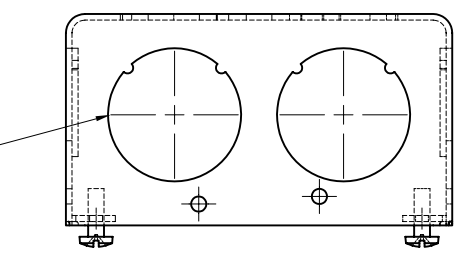


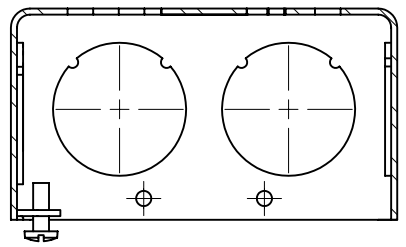
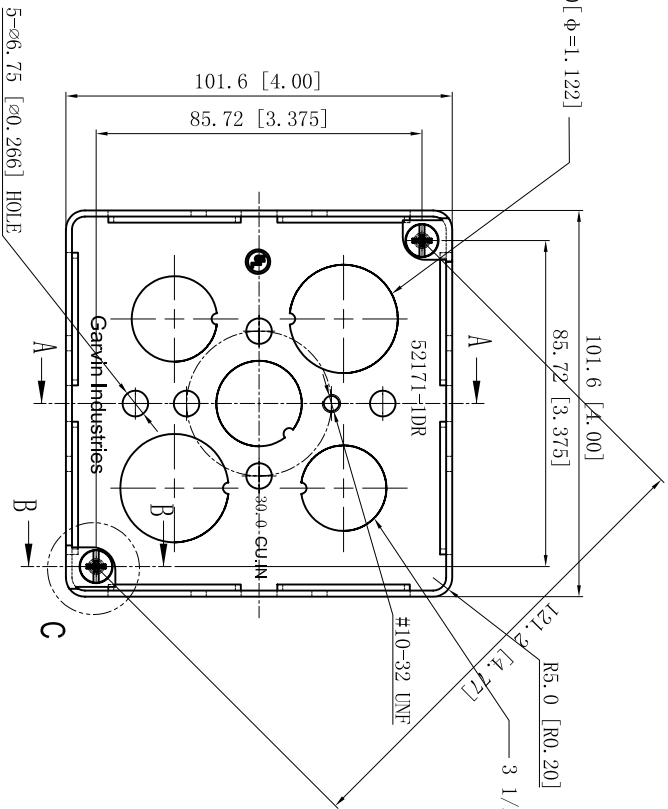
SIDES	BOTTOM
8 1" KNOCKOUTS	3 1/2" KNOCKOUTS
	2 3/4" KNOCKOUTS
2 PCS 8-32X1/2 Screws Installed	
Material: Steel-0.0625"-660 Galvanized	



2 3/4" KNOCKOUTS $\phi=28.50$ [$\phi=1.122$]



4 1" KNOCKOUTS $\phi=35.00$ [$\phi=1.378$]



CUTAWAY VIEW-A-A

DESCRIPTION

STANDARD PACKING

GARVIN INDUSTRIES

4" SQUARE BOXES 2-1/8" DEEP

This data sheet is for reference only. GARVIN INDUSTRIES reserves the right to make changes to the design without prior notice.

25 PCS

TITLE

SIZE

A4

DWG NO.

52171-1DR

REV

C

TRADE REFERENCE TERMS

DATA SHEET