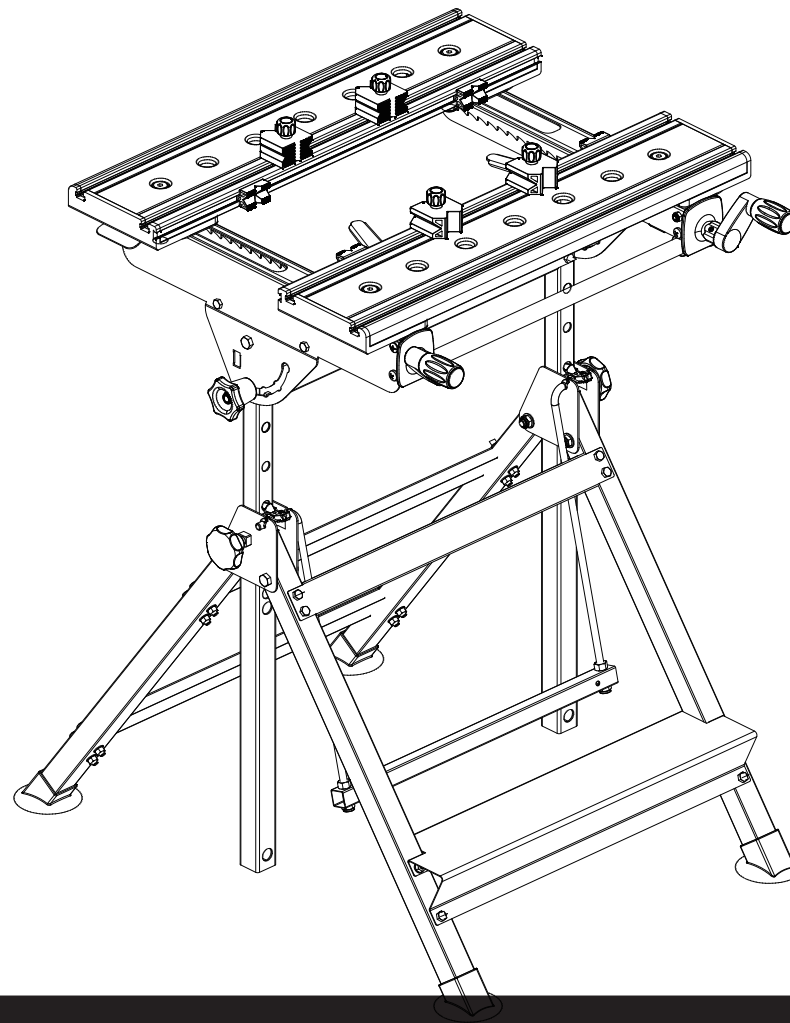




SPEEDJAW™

PRODUCT MANUAL PORTABLE PROJECT STATION



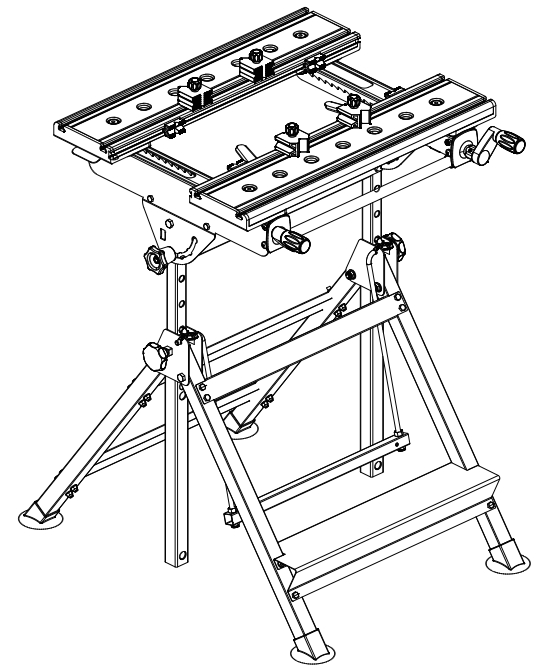
SAFETY WARNINGS

WARNING: Be sure to read and understand all safety instructions in this manual before using this work table. Failure to follow all instructions listed in the manual may result in serious personal injury.

1. Read and understand the Product Manual. Observe any warnings and instruction labels affixed to the product.
2. Wear appropriate safety apparel for the specific job at hand.
3. Wear safety glasses/goggles.
4. Never stand or sit on the table.
5. Replace damaged components immediately.
6. Make sure your work platform is sufficiently sturdy to do the specific job at hand.
7. Think safety. Safety is a combination of operator awareness, common sense and alertness at all times.

SAFETY INSTRUCTIONS FOR WORK TABLES

1. Use caution when folding or unfolding legs to limit any finger pinch points.
2. Place stand on flat and level surface to keep from rocking or tipping.
3. Test the setup for stability before proceeding with work.
4. Be sure the table is tightened securely at all mountings before folding for transport.



OVERVIEW

Congratulations on your purchase of the SPEEDJAW™ Portable Project Station. This product offers flexible height and angle adjustment for perfect access to your work. The table allows clamping of odd shapes, with a sliding benchtop for fine-tuning, and features a lightweight, portable design for easy storage.

FEATURES

Your SPEEDJAW™ Portable Project Station is loaded with standard features all designed and engineered to maximize the functionality and flexibility of your project station.

STANDARD FEATURES

- Adjustable Angle Benchtop – 25°, 50°, 80°, 90°
- Height Adjustment – 28 1/2" - 40 1/4"
- Large Stops (4)
- Small Stops (4)

PARTS LIST

PART #	DESCRIPTION	QTY				
1	Bench top with sliding bar	1 pc	①	②	③	④
2	Elevating rod assembly	2 pcs	⑤	⑥	⑦	⑧
3	Cross bar	1 pc	⑨	⑩	⑪	⑫
4	Leg frame	1 pc				
5	Large stops	4 pcs				
6	Height fix knob	2 pcs				
7	Small stops	4 pcs				
8	Leg feet	4 pcs				
9	M6X35 bolt	4 pcs				
10	M6X12 bolt	4 pcs				
11	M6 nylon nut	8 pcs				
12	M6 washer	8 pcs				

ASSEMBLY INSTRUCTIONS

Note: Read all instructions completely before attempting assembly.

1. Attach four leg feet (8) to the leg frame (4).
2. Attach the cross bar (3) to the elevating rod assembly (2) with M6X35 hex bolts (9), M6 nylon nuts (11), and M6 washers (12). Make sure the seven pre-drilled holes on both elevating rods are on the opposite side and the adjusting knobs are on the outside of the assembly.
3. Push the elevating swing bar forward, and insert the elevating rod assembly into the frame tubes. Be sure that the latches on the swing rods fit into the holes on the elevating rods.
4. Use the height fix knob (6) to tighten the elevating rod (2).
5. Lay the bench top (1) onto the top of the elevating rod assembly. Ensure the frame of the bench top sits outside the tops of the legs. Attach using M6X12 bolts (10), M6 safety nuts (11), and M6 washers (12).
6. The large stops (5) can be inserted into the top channels. To adjust the angle of the stop, simply lift it up and turn it around.
7. The small stops (7) can be inserted into the side channels as needed.

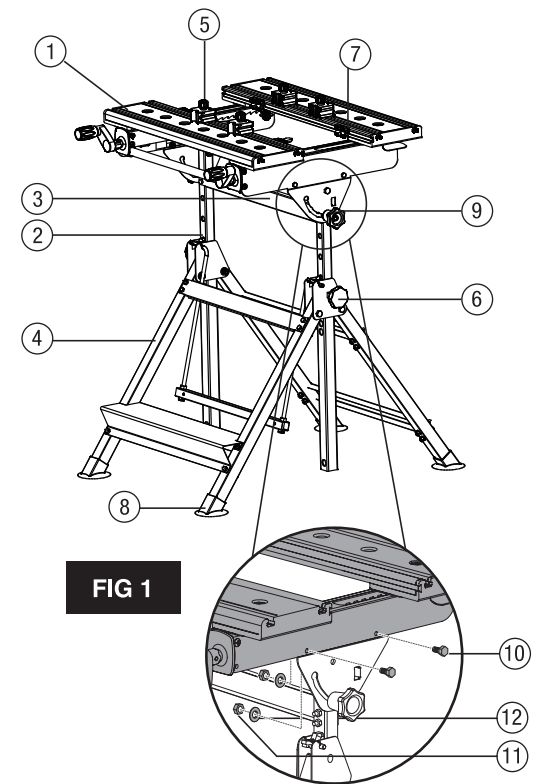
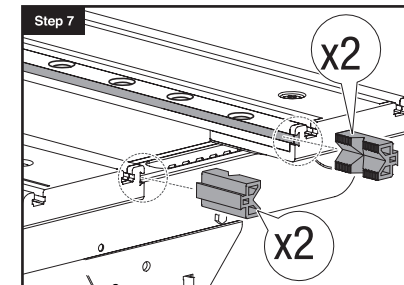
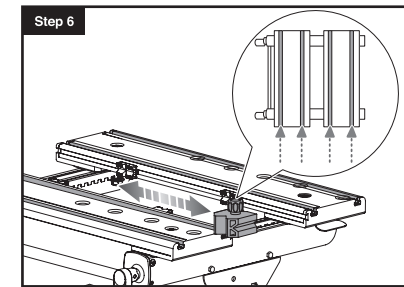
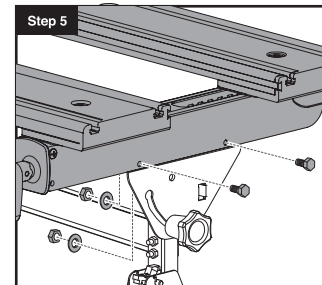
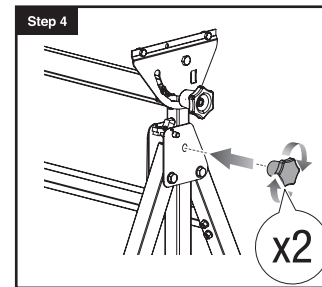
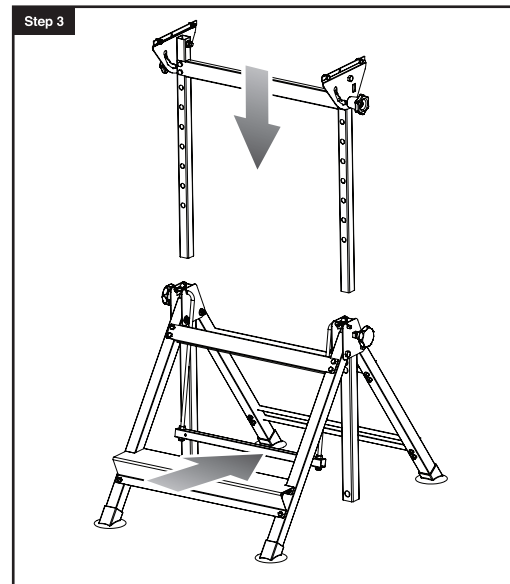
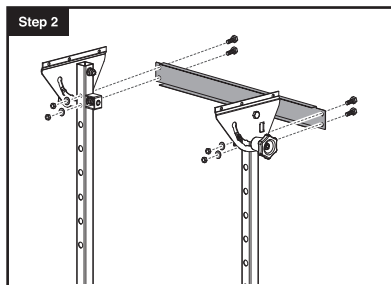
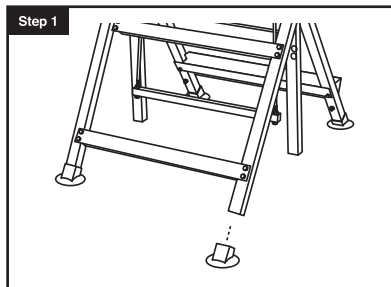
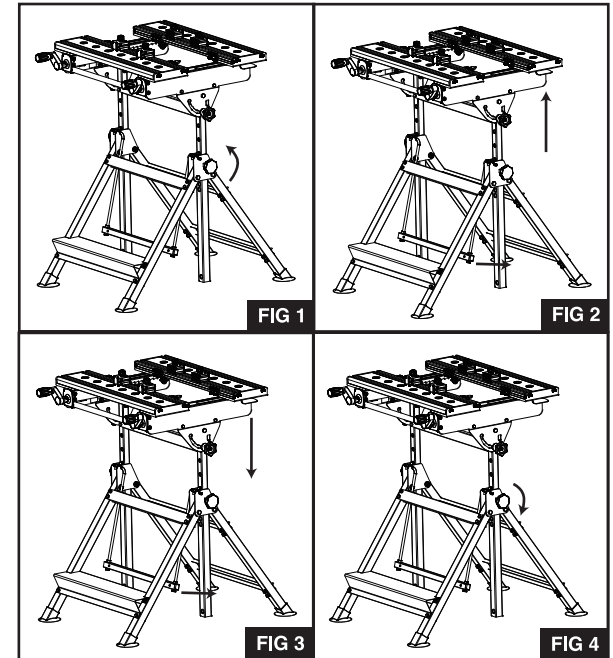


FIG 1



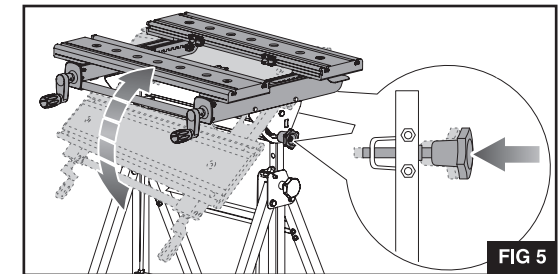
HEIGHT ADJUSTMENT INSTRUCTIONS

1. Turn the height adjustment knobs counter-clockwise on each leg to loosen. Figure 1.
2. While holding the bench top, push the elevating swing bar forward with your foot to disengage the two latches and adjust the height of the bench upwards or downwards. Figure 2 and Figure 3.
3. Use the elevating swing bar to ensure the two latches are re-engaged into the adjustment holes on the two elevating rods.
4. Turn the height fixing knobs clockwise on each leg to tighten. Figure 4.
 - a. Note: Ensure the height fixing knobs are tight before using the workbench.



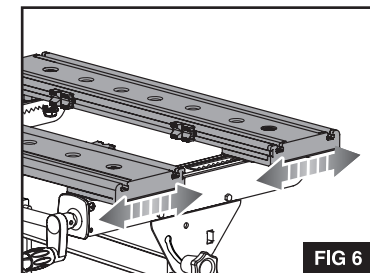
TILT ANGLE ADJUSTMENT INSTRUCTIONS

1. For normal use, the bench top is set horizontally to 90°; however, the top can also be adjusted to 25°, 50°, and 80°.
2. Ensure that the tilt adjustment knobs are completely unscrewed.
3. Push the two adjustment knobs in simultaneously and tilt the bench top until the knobs engage into the next set of present guide holes. Figure 5.



BENCH TOP ADJUSTMENT INSTRUCTIONS

1. To adjust the bench top platforms to the widest opening, pull up both levers on each sliding bar and slide forwards or backwards as desired. Figure 6.
2. To reduce the gap between the two bench top platforms, simply pull the rear platform towards the front platform.
3. Ensure that the mechanism is securely engaged in the tabs in both sliding bars. Note: Ensure the tilt adjustment knobs are tight before using the workbench.





1 YEAR | LIMITED WARRANTY

This product is backed by a 1 Year Limited Warranty. This warranty covers manufacturer defects and workmanship. The warranty excludes misuse or abuse and normal wear and tear. Exclusion is not allowed in some states and may not apply. This warranty gives you specific legal rights, and you may have other rights, which vary from state to state.

JS PRODUCTS | 6445 MONTESSOURI STREET | LAS VEGAS, NV 89113
800.255.7011 | FAX: 775.898.8773 | FOR MORE PRODUCTS AND ACCESSORIES GO TO WWW.JSPRODUCTS.COM