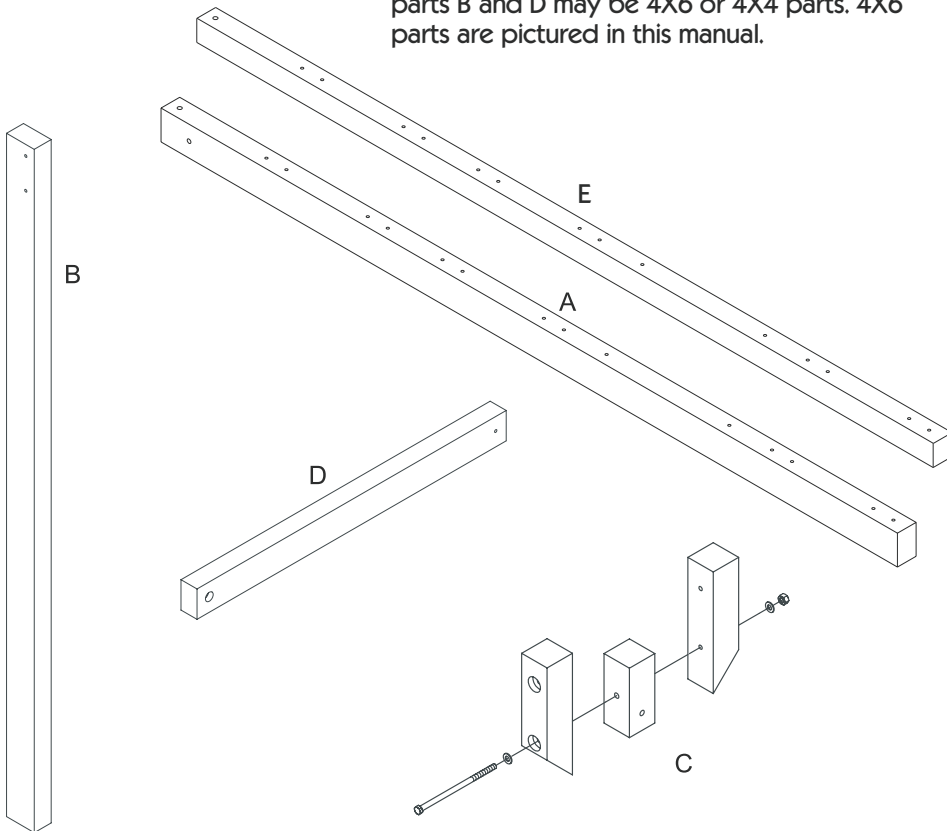


INSTRUCTIONS FOR ASSEMBLY & ATTACHMENT OF ADJUSTABLE A-FRAME & HEADBEAM

PARTS LIST

ITEM	DESCRIPTION	QUANTITY
A	138" or 168" Headbeam	(1)
B	156" A-Frame Leg	(2)
C	U-Shaped Bracket	(1)
D	98 1/2" Cross Brace	(1)
E	138" or 168" Header	(1)

Note: Depending on the model you ordered parts B and D may be 4X6 or 4X4 parts. 4X6 parts are pictured in this manual.



STEP 1: POSITION HEADBEAM & INSTALL HANGERS

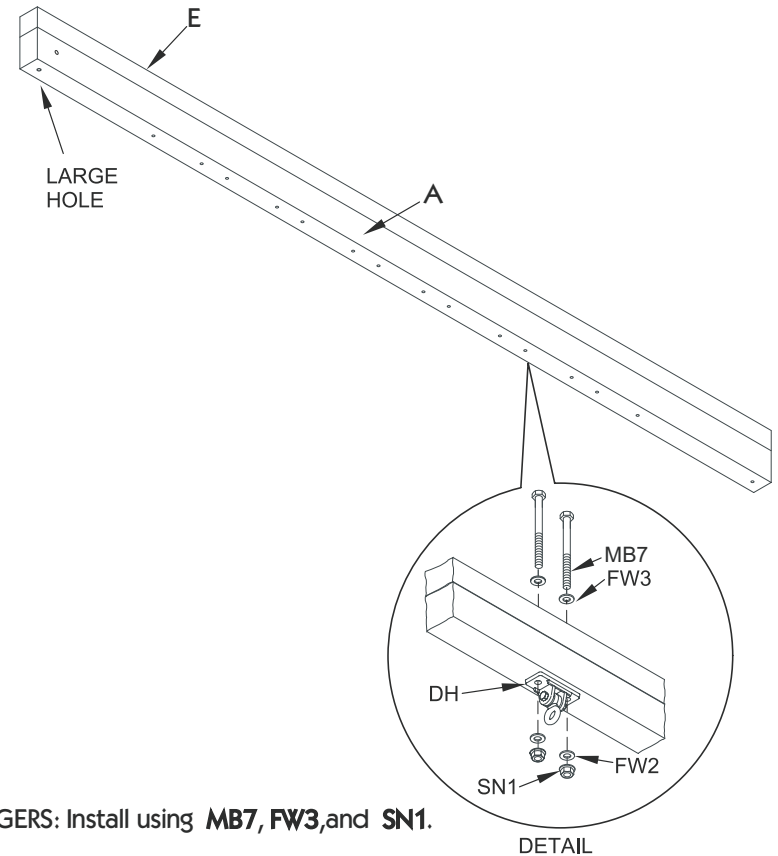
1

PARTS NEEDED:

(1) A (138" or 168" Headbeam)

HARWARE NEEDED:

(6) DH (Ductile Swing Hanger only (4) required if 138" Headbeam)
 (12) MB7 (3/8" x 10" Machine Bolt)
 (12) FW3 (3/8" Fender Washer)
 (12) FW2 (3/8" Standard Washer)
 (12) SN1 (3/8" Loc Nut)



PART DH HANGERS: Install using **MB7**, **FW3**, and **SN1**.
 (See Detail)

Now position the headbeam to where it will be attached to the playset. Place the headbeam on the ground perpendicular to the location on the playset where it attaches. The end of the headbeam with a hole through the side attaches to the playset.

STEP 2: ASSEMBLE ADJUSTABLE A-FRAME

2

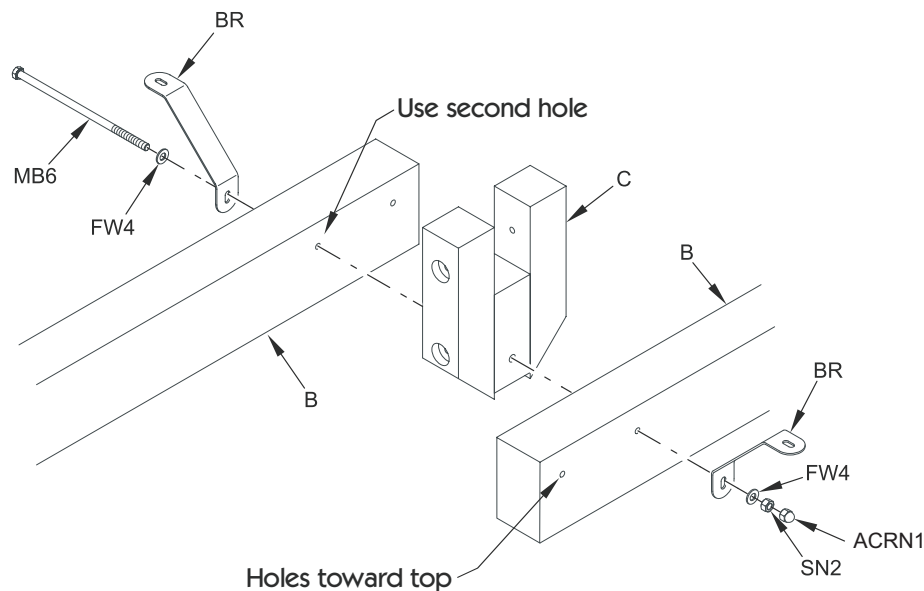
PARTS NEEDED:

- (2) B (124" A-Frame Leg)
- (1) C (U-Shaped Bracket)

HARVARE NEEDED:

- (1) MB6 (1/2" x 12" Machine Bolt)
- (2) FW4 (1/2" Standard Washer)
- (1) SN2 (1/2" Loc Nut)
- (2) BR (Steel Support Bracket)
- (1) ACRN (1/2" Acorn Nut)

At the end of headbeam opposite the playset, place a part **B** and a Steel Support Brace (**BR**) on each side of part **C** as shown. Bolt together as shown using **MB6**, **FW4**, **ACRN1** and **SN2**. **DO NOT TIGHTEN COMPLETELY.**



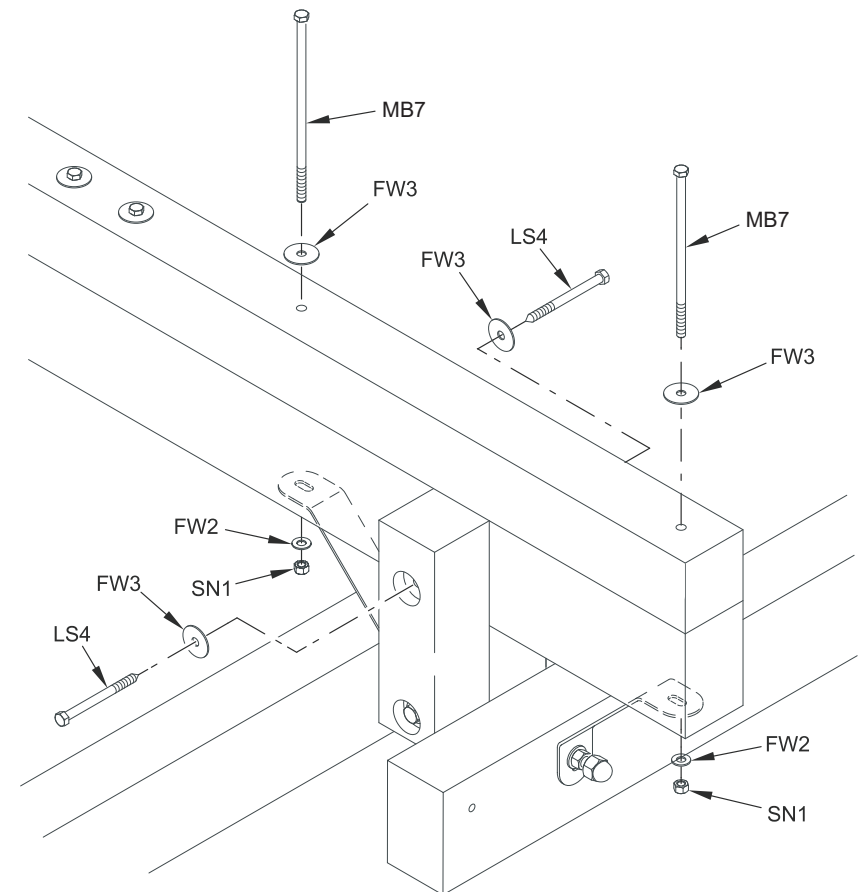
STEP 3: ATTACH HEADBEAM TO A-FRAME

3

HARVARE NEEDED:

- (2) MB7 (3/8" x 10" Machine Bolt)
- (2) FW2 (3/8" Standard Washer)
- (4) FW3 (3/8" Fender Washer)
- (2) SN1 (3/8" Loc Nut)
- (2) LS4 (4-1/2" Lag Screw)

Place the headbeam into the U-Shaped Bracket part **C** of the Step 2 assembly and line up the steel support braces to the two single holes in the headbeam spaced 23 1/4" apart (49" apart if your set has a mini-deck) and attach using **MB2**, **FW3**, **FW2** and **SN1**. When the headbeam is sitting flat in the U-bracket, attach with the **LS4** and **FW3** into the headbeam from each side. (You may need to prop up the end of the headbeam 6" for it to lay flat in the U-bracket.)



STEP 4: RAISE HEADBEAM & ATTACH TO PLAYSET

4

PARTS NEEDED:

(1) D (65" Cross Brace)

HARWARE NEEDED:

(2) CB1 (1/2" X 6 1/2" Carriage Bolt)

(2) FW5 (1/2" Flat Washer)

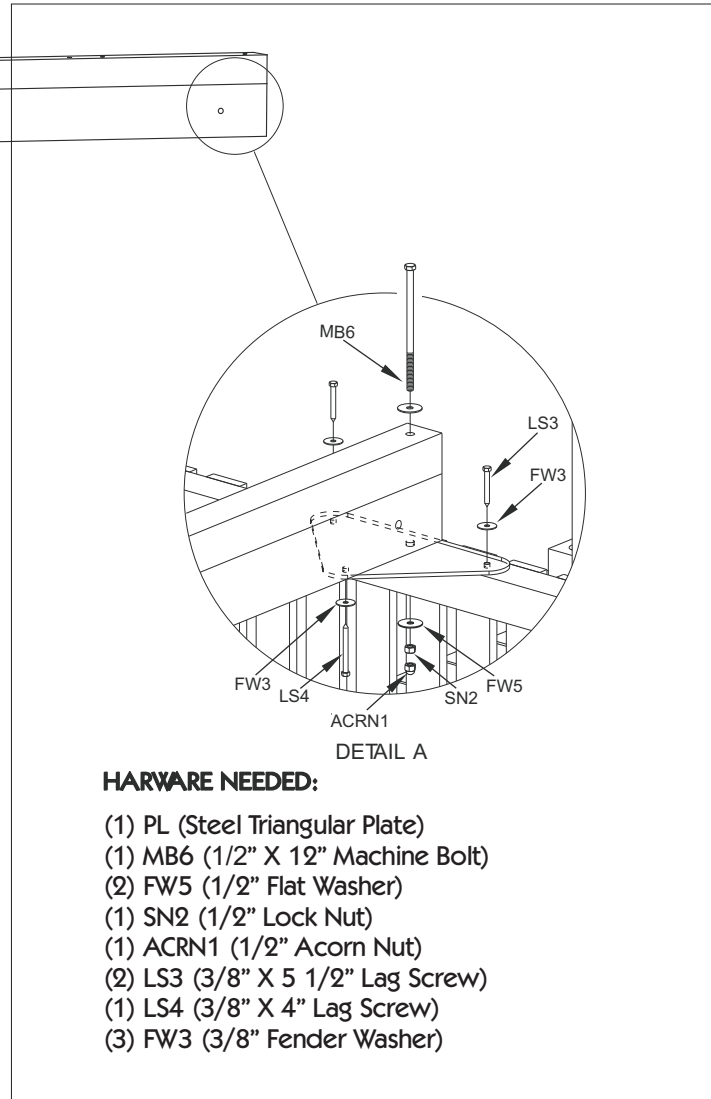
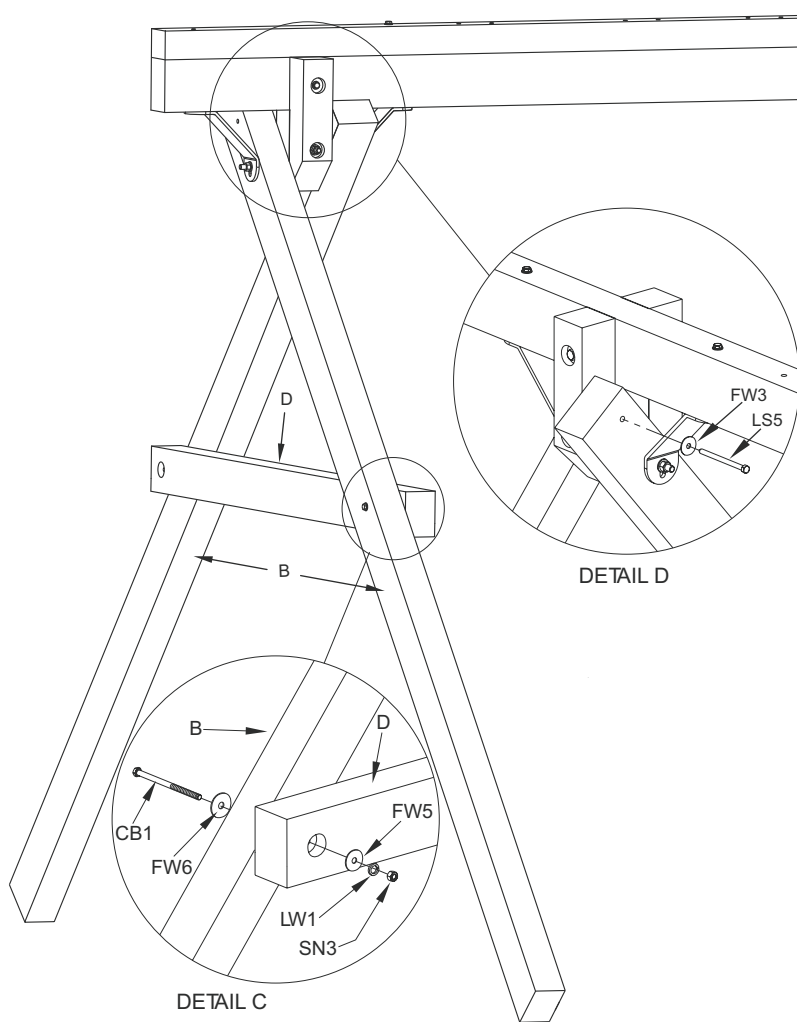
(2) LW1 (1/2" Lock Washer)

(2) SN3 (1/2" Hex Nut)

(2) FW3 (3/8" Fender Washer)

(2) FW6 (1/2" Large Washer)

(2) LS5 (3/8" X 5 1/2" Lag Screw)



Before raising the headbeam, determine from Detail A or B how the headbeam attaches to the playset and the hardware needed based on the type set you purchased. Place the hardware needed to attach the headbeam up in the playset so it will be handy. Attach Steel Triangular Plate (PL) to the safety rail using LS3 and FW3.

With a helper, carefully lift the headbeam from both ends till it is level with the safety rail of playset while bringing the A-Frame legs together to support the headbeam. Place the headbeam on the safety rail being extremely careful it does not slip off and fall. With one person in the playset and the other steadying the A-Frame bolt the headbeam to the fort as shown. Using MB6, FW5, SN2 and ACRN1.

Place part D into position between parts B as shown. Using a level determine and mark the location of the holes to be made in part B so that the hole in part D is centered on part B. Mark the location on one side and drill a 1/2" hole in part B. Attach part D Using CB1, FW6, FW5, LW1 and SN3. (See Detail C)

With one side of part D attached, check the location of the mark for the other hole and adjust if needed. Drill the hole and finish attaching part D. Once the A-Frame and headbeams are attached and level, tighten all bolts and install the LS5 and FW3 at the top of part B. (See Detail D)

HARWARE NEEDED:

(1) PL (Steel Triangular Plate)

(1) MB6 (1/2" X 12" Machine Bolt)

(2) FW5 (1/2" Flat Washer)

(1) SN2 (1/2" Lock Nut)

(1) ACRN1 (1/2" Acorn Nut)

(2) LS3 (3/8" X 5 1/2" Lag Screw)

(1) LS4 (3/8" X 4" Lag Screw)

(3) FW3 (3/8" Fender Washer)