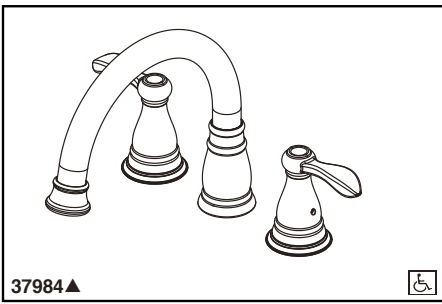




# ROMAN TUB/WHIRLPOOL FAUCET

- Porter® Bath Collection
- Three Hole Installation

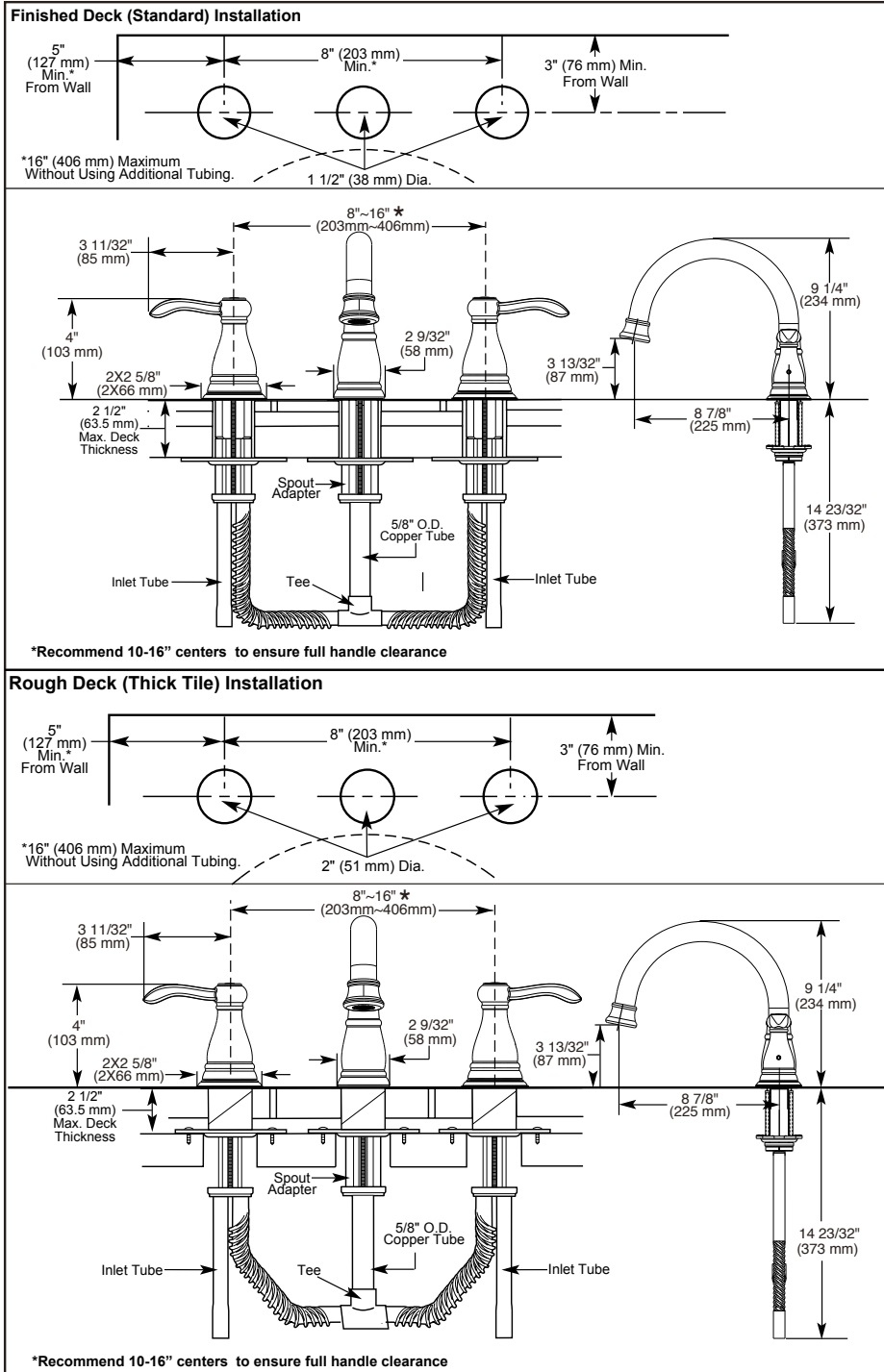


37984▲



Submitted Model No.: \_\_\_\_\_

Specific Features: \_\_\_\_\_



## STANDARD SPECIFICATIONS:

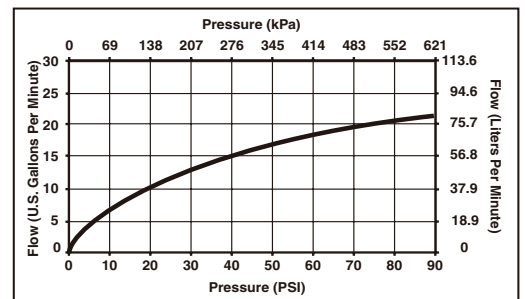
- Two handle Roman Tub trim with rough faucet for concealed mounting
- Spout swings 70° total
- Temperature and volume controlled with handles
- Solid fabricated brass end valves
- Widespread 16" (406 mm) maximum centers without using additional tubing
- 5/8" O.D. copper supply inlet tubes
- 5/8" O.D. corrugated copper supply outlet tubes
- Flexible deck or ledge mount installation
- Adjustable rough-in for thin or thick deck installations
- Control mechanism is a rotating cylinder type with stainless steel plate and 180° rotation, with replaceable non-metallic seats operating in stainless steel lined sockets
- Hot and cold stems are interchangeable
- All operating parts shall be replaceable from the top

## WARRANTY

- Lifetime limited warranty on parts (other than electronic parts and batteries) and finishes: or, for commercial users, for 5 years from date of purchase.
- 5 year limited warranty on electronic parts (other than batteries); or, for commercial users, for 1 year from the date of purchase. No warranty is provided on batteries.

## COMPLIES WITH:

- ASME A112.18.1 / CSA B125.1
- ☑ Indicates compliance to ICC/ANSI A117.1



▲ Designate proper finish suffix

Delta reserves the right (1) to make changes in specifications and materials, and (2) to change or discontinue models, both without notice or obligation. Dimensions are for reference only. See current full-line price book or [www.deltafaucet.com](http://www.deltafaucet.com) for finish options and product availability.

DSP-B-37984 Rev. D



55 E 111th Street, Indianapolis, Indiana 46280  
350 South Edgeware Road, St. Thomas, ON N5P 4L1  
© 2015 Masco Corporation of Indiana