

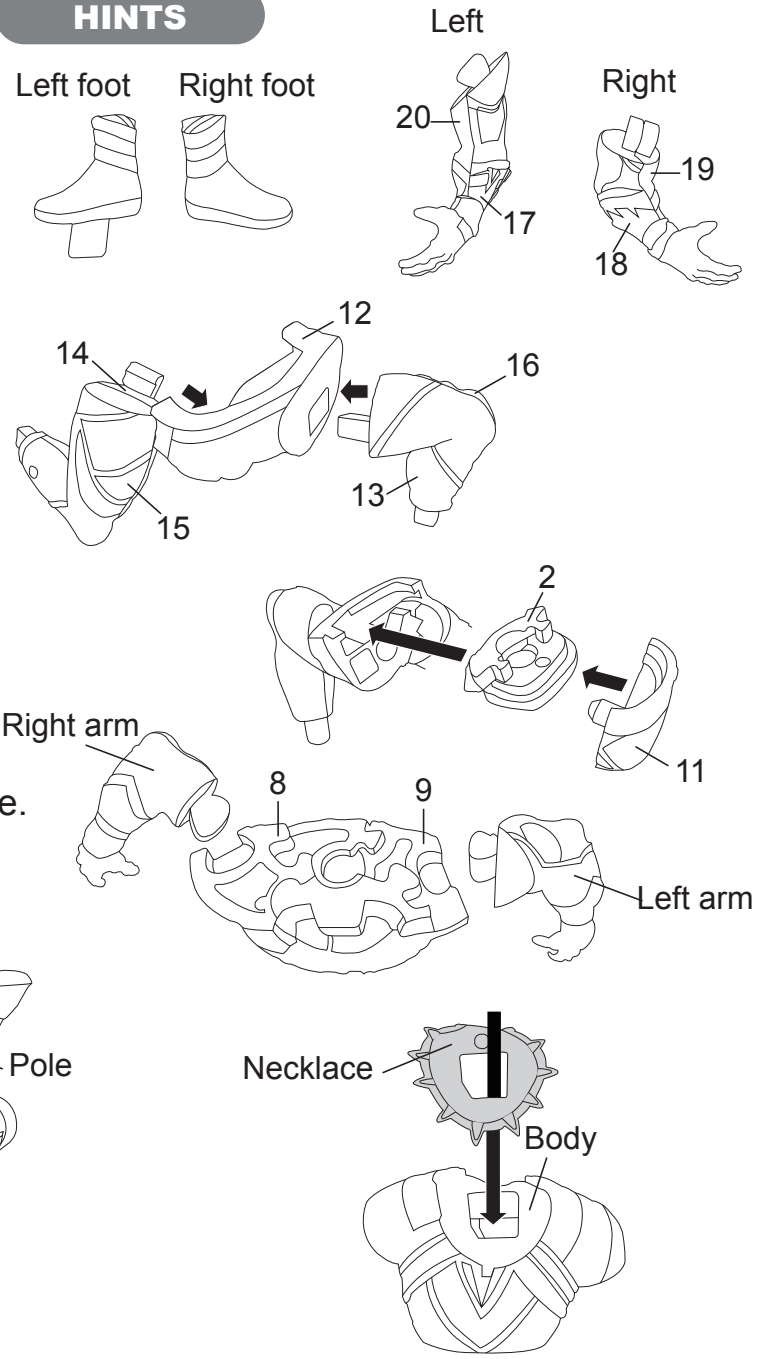
INSTRUCTIONS

1. Please count and make sure all pieces are present before assembly.
2. The pole pieces are delicate. To prevent damage, do not use excessive force.
3. Assemble crystal puzzle by putting the puzzle pieces together in the order shown below.
4. Piece numbers are not necessarily in the order of assembly. Some pieces do not have numbers.
5. Missing a piece? Email consumer@ugames.com or call (866) 853-8970 with missing piece number.

Step	Piece No.	
1	15	
2	14	
3	Right foot	
4	13	
5	16	
6	Left foot	
7	12	
8	2	
9	11	
10	4	
11	7	
12	5	
13	6	
14	10	
15	3	
16	9	
17	8	
18	Left	17
19	arm	20
20	Left hand	

Step	Piece No.	
21	Right	19
22	arm	18
23	Right hand	
24	1	
25	Pole	
26	Necklace	
27	Head	
28	Face	
29	Base	23
30		25
31		21
32		22
33		24

HINTS



Secure shoes into base.



© MARVEL
 © 2024 HANAYAMA CO.,LTD. Japan All Design and Copy Rights Reserved.
 This product is produced and distributed under license of Beverly Enterprises Inc. & Jeruel Ind.Co.Ltd.
 © 2024 University Games Corporation, San Francisco, CA 94110. All Rights Reserved.

See our entire line of games and puzzles at

