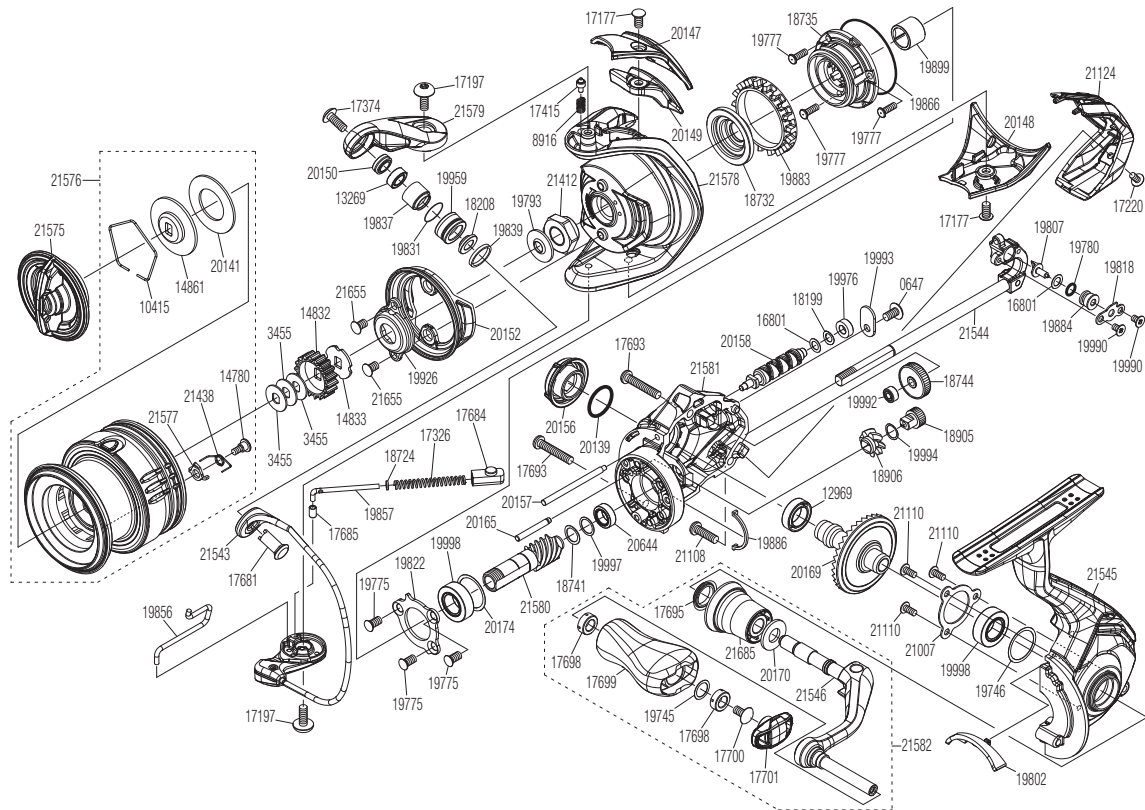


SHIMANO

ULTEGRA SA-RB

ULT-1000



Please note that the number of adjusting washers may not always be the same as shown in the exploded views.

(51SF52B010X)

Please note that your actions take full responsibility when you take it apart.

#	Part No.	Description	#	Part No.	Description	#	Part No.	Description
0647	10QG5	Screw	19746	101AY	Washer	20157	10E60	Oscillating Guide
3455	10BXN	Washer	19775	100WY	Screw	20158	10E62	Worm Shaft
8916	10CH0	Click Spring	19777	100WT	Screw	20165	10E5Q	Idle Gear Shaft
10415	10B6L	Retainer	19780	100WX	O Ring	20169	100W6	Drive Gear
12969	107FA	Ball Bearing	19793	1017W	Bearing Water Proof	20170	10E5X	Washer
13269	104VX	Ball Bearing	19802	1017Y	Bail Trip Strike	20174	10E55	Washer
14780	10A6F	Screw	19807	1018D	Oscillating Pawl	20644	10RKR	Ball Bearing
14832	103MU	Spool Support A	19818	10182	Oscillating Pawl Cover	21007	100F9	Bearing Retainer
14833	10J04	Spool Support B	19822	10DWD	Bearing Retainer	21108	10SHA	Screw
14861	10BBM	Key Washer	19831	1009E	O Ring	21110	10SH0	Screw
16801	10K9C	Washer	19837	1009K	Bushing	21124	10S0U	Rear Protector
17177	10PS2	Screw	19839	10RFZ	Spacer	21412	10T52	Rotor Nut
17197	10PS5	Screw	19856	10E5Y	Bail Trip Lever	21438	10DS5	Drag Click Spring
17220	10PRZ	Screw	19857	10SAN	Bail Spring Guide A	21543	10E5A	Bail Assembly
17326	10R2N	Bail Spring	19866	1009Z	O Ring	21544	10E5P	Main Shaft Assembly
17374	10K90	Screw	19883	10QXQ	Friction Ring	21545	10E52	Side Cover Assembly
17415	106ZC	Click Pin	19884	1009L	Collar	21546	10E59	Handle Shank Assembly
17681	10TPC	Line Roller Support	19886	1009W	Flange Water Proof	21575	10RHK	Drag Knob Assembly
17684	107AB	Bail Spring Guide B	19899	1009Y	Roller Clutch Inner	21576	10RG6	Spool Assembly
17685	10TRC	Bail Spring Guide A Bush	19926	1076N	Rotor Nut Lock Plate	21577	10RHQ	Drag Click
17693	10TND	Screw	19959	1009A	Line Roller	21578	10RGT	Rotor
17695	10PXV	Handle Shaft Seal	19976	1009C	Bushing	21579	10RHE	Bail Arm
17698	10PXZ	Bushing	19990	1055H	Screw	21580	10RGU	Pinion Gear
17699	10328	Handle Knob	19992	1009G	Bushing	21581	10RHR	Body
17700	10LFA	Screw	19993	10S7C	Worm Shaft Retainer	21582	10RGC	Handle Assembly
17701	10TNJ	Handle Knob Seal	19994	10TBA	Washer	21655	10DNE	Screw
18199	10ECK	Washer	19997	10HE5	Washer	21685	10RWV	Handle Shaft Cover Assembly
18208	10TJM	Bearing Spacer	19998	10DZB	Ball Bearing			
18724	101D9	Spring Guide A Support Collar	20139	10E3K	O Ring			
18732	101D5	Rotor Ring	20141	10E7L	Drag Washer			
18735	10S2L	Roller Clutch Assembly	20147	10RS7	Bail Spring Cover			
18741	10SYU	Washer	20148	10RRG	Bail Hold Support Guard			
18744	10DK0	Idle Gear	20149	10RSN	Counter Weight Cover			
18905	10021	Idle Gear (Small)	20150	10E44	Collar			
18906	1001A	Idle Gear (Large)	20152	10RRM	Rotor Brim			
19745	104FH	Washer	20156	10RSE	Handle Screw Cap	18054	10G4L	Anti Line Slip Sticker